

Xmas Ideas For Santa Claus Helpers

THE illustration shows a well fitting and prettily shaped apron of lawn with decoration in Brabant braids. The braids are wide and easy to handle and may be worked rapidly. The lawn is pinned into place and basted to braids before removing lace from pattern, after which the lace is hemmed down to lawn. In some places the lawn is cut from the design. The raw edges of lawn may either be turned under and hemmed to the braids on wrong side or just carefully whipped. A few plaits are laid to make a perfect fit at waist line and a band about one inch wide put on. Then five rosettes are made of the wide braids by gathering around a small ring. These rosettes are tacked securely on the band in even spaces and in such manner as to permit the soft, wide messaline ribbon to be drawn through. The illustration hardly does justice to this very pretty belt effect.

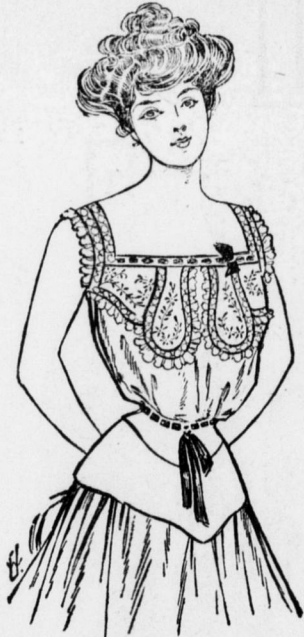
A stocking bag is by no means a new idea, but it is so practical and useful that it always makes an acceptable



APRON IN BRABANT LACE.

gift. A pretty one may be made with a yard of blue silesia or any pretty material, two yards of ribbon an inch wide, a small piece of white flannel, some stiff pasteboard and a spool of silk. Of the pasteboard cut four circular pieces, each one measuring seven inches across. Cover these four pieces smoothly with the cloth and overhand the edges of two together with silk, the remaining two to be done in the same way for the opposite side. The puff should be a straight piece measuring sixty inches long and twelve inches wide. This is to be gathered each side to fit round the edge of the circular pieces, leaving a space at the top of the circle three inches for the opening, thus forming the bag. Make for the outside of one of the circles a piece of the same size and shape and embroider or applique some little design upon it.

Then cut from the flannel several leaves the same shape, but smaller, buttonhole stitch or pink the edges and fasten them to the top of the circle on the bag, as the leaves in any needlebook are fastened, then sew the embroidered cover outside of this at the top. Where it is fastened place a bow of ribbon. This is for holding the darning needles. On the circle for the opposite side a piece of cloth is gathered top and bottom, to cover a little more than half the circle, for a pocket. In the easing at the top



DAINTY CORSET COVER.

run an elastic, and in the pocket is kept the yarn for darning. The ribbon is used to draw the puff together at the top, and the interior is the receptacle for the stockings.

The corset cover shown in the illustration may be made to slip over the head or it may open down the center front. The embroidered pieces are made separately from the cover and are fastened at the top only so that the cover may be as full as one chooses. The embroidered pieces are edged with valenciennes insertion and edge. Featherstitching may be used to fasten the insertion in place, and French knots may also be added if desired.

A Pretty Tie Hanger.

A three branch towel rack, the sort that screws to the side of a door or shelf, makes an extremely nice tie hanger for a man. The rack may be of the cheapest wood, as its branches are wrapped with cotton batting sprinkled with sachet powder. When this is done ribbon is wound round and round perfectly smooth, the ends being tacked at the hinged ends.

PENNSYLVANIA RAILROAD

Bulletin.

THE STEEL COACH--A TRAVEL SAFEGUARD.

The Pennsylvania Railroad now has in operation on its lines east of Pittsburgh over two hundred passenger coaches, dining cars, baggage cars, and mail cars of the new all-steel type.

The solid steel framework of these cars, designed to resist shock and minimize the dangers of collision, is further strengthened by the steel sheathing enclosing the body of the car. In fact, everything about the coach is steel, save the window frames, the cushions of the seats and the flooring. Such little woodwork as enters into the make-up of the coach, the plush with which the car seats are covered and the hair with which they are stuffed is treated to a fireproofing process, whilst the floors are cement, thus rendering the coach at once practically indestructible and thoroughly fireproof. It is built like a battleship.

The new coach is longer than the standard car generally in use on the railroads of this country, and has a comfortable seating capacity of sixty to ninety people according to the style of the coach.

The unusual weight of the coaches gives to them a solidity that greatly increases the comfort of the passenger.

The seats are adjusted to a more convenient space and angle, the coaches are all lighted with electricity and amply ventilated in winter as well as summer by new and thoroughly tested methods.

The interior finish of the coach is plain though pleasing to the eye. The absence of ornamentation enhances the idea of strength and at the same time assures absolute cleanliness and thorough sanitation.

Steel cars are now in use on the principal trains between New York, Philadelphia, Washington, and on the Main Line between Philadelphia and Pittsburgh. The number of cars is constantly being increased as the finished product comes from the shops.

The Pennsylvania Railroad's equipment is recognized as the Standard of America. 1422-44-2t.

BEST BY ANY TEST
and the best test is its use.

"Family Favorite"
LAMP OIL

Given the nearest to natural of any artificial light known.
Burns white, clear, steady and full flame to the last drop.
Will not smoke, "smell" or flicker.
Costs no more than ordinary tank wagon oil and infinitely better.
Most any dealer can supply you.

Waverly Oil Works Co., Independent Refiners, **Pittsburg, Pa.**
Also makers of Waverly Special Auto Oil and Waverly Gasolines.

SECOND TO NONE
ADAM, MELDRUM & ANDERSON CO.
396-408 Main Street
BUFFALO, N. Y.

FURS For Gifts

No better gift to a lady than a set of rich furs and no better opportunity to secure them than at the great

Christmas Sale of Furs

which is now in progress. These furs were contracted for months ago—before the big advance in prices. We could not buy them to-day at wholesale for the prices at which we are offering them to you.

Black Furs

Black Lynx and Black Wolf Furs are the favorite this season.

Lynx Muffs

Pillow and rug styles at \$35.00 \$42.50 up to \$60.00.

Lynx Collars

Peleries, \$35 and \$45.
Shawls, \$43.50 and \$50.
Bolero Cape, \$75.00.
Throw Scarf, \$37.50.

Black Wolf

Pillow Muffs, \$11.95.
Rug Muffs, \$15.95.
Shawl Collars, \$15.95.

Black Fox Sets \$30

Large Rug Muff and Shawl Collar.

Persian Paw Sets \$10.95

\$14 Large Pillow Muff and 50 inch Throw Scarf.

Extra Special in Fine Mink Furs, and Fur and Fur Lined Coats.

We Refund Your Railroad Fares.

ADAM, MELDRUM & ANDERSON CO.
American Block, Buffalo, N. Y.

Roof Slating

I am especially prepared to

Contract for Slating

By the square or job. As to my workmanship, I refer, by permission, to the work recently completed for the Hon. B. W. Green.

GEORGE A. WRIGHT.

Get My Prices Before You Use Shingles

MRS.

M. F. Conway

Has removed from Broad Street and is now located on Fourth Street, opposite the Odd Fellows Block, where she will continue to serve her customers with

Home-made Bread Cookies and any thing in the Baking line made to ORDER.

Mrs. M. F. Conway,

We promptly obtain U. S. and Foreign

PATENTS

Send model, sketch or photo of invention for free report on patentability. For free book, How to Secure TRADE-MARKS with Patents and TRADE-MARKS with

CASNOW & CO.
OPPOSITE U. S. PATENT OFFICE, WASHINGTON, D. C.

Speaking of Holiday Gifts

for Xmas? Practical gifts are most acceptable. Gifts of real worth can be chosen from the large stock of this reliable clothing house

At this season of the year nearly every mind is occupied with the same thought---what will I give

SUITS AND OVERCOATS

Out of the Ordinary.

Clothes to appeal to the up to date man must be neat, nobby and perfectly tailored. We have them in all prices ranging from \$8.00 to \$18.00

Leather Goods, Suit Cases and Hand Bags \$1.00 to \$10.

Gloves, in Wool and Leather; we carry a full line from 50 cents to \$3.00



Gents Furnishings

- Bath Robes \$3.50 to \$8.00.
- Sweater Coats 50c to \$4.00.
- Shirts, in plain white and fancy 50c \$1.50.
- Neckwear 25c to \$1.00.
- Suspenders in Holiday Boxes 50c to \$1.00.
- Hosiery in all colors 15c to 50c.

Jewelry

- Watch Fobs 50c to \$5.00
- Cuff Links 25c to \$4.00
- Combination Set, Cuff Links and Scarf Pin 75c to \$3.50
- Stick Pins 50c to \$5.00

W. L. Douglas Shoes

in all the newest shapes from \$2 to \$5

R. SEGER & CO.,

Next Door to First National Bank EMPORIUM, PA.