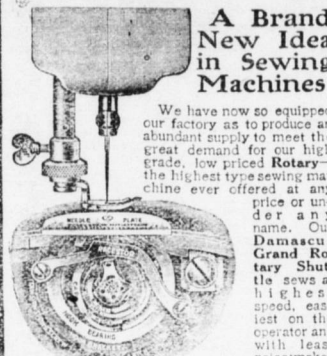


The New Rotary



We have now equipped our factory to produce an abundant supply to meet the great demand for our high grade, low priced Rotary—the highest type sewing machine ever offered at any price or under any name.

We Are The First to offer the people the new type Rotary Sewing Machine at less than \$65.00 to \$75.00.

You Must Have our new, elaborate Sewing Machine Book and illustrated catalogue in two colors, about 40 large pages, 11x14 in.

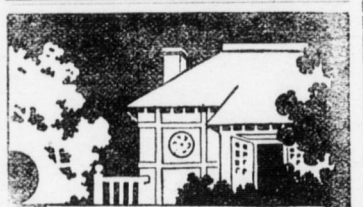
Montgomery Ward & Co., Michigan Ave., Madison and Washington Sts. CHICAGO

LADIES DR. LAFRANCO'S COMPOUND.

Safe, speedy regulator; 25 cents. Druggists or mail Booklet free. DR. LAFRANCO, Philadelphia, Pa.

Foley's Honey and Tar for children, safe, sure. No opiates.

The Children's Favorite. For Coughs, Croup, Whooping Cough, etc. One Minute Cough Cure is the children's favorite.



"How fine your house looks!" "Yes, it's been painted with

Lucas Paints

That's what gives it the bright, rich, glossy appearance. Lucas Paints give a higher gloss, look better and look better longer than any other paint made.

John Lucas & Co Philadelphia

THE COUNTY.

SINNAMAHONING. Rev. G. H. Noble visited in Emporium on Tuesday.

G. B. Barclay drove to Potter county Tuesday on business.

Miss Beatrice Barclay came home from school last Saturday.

The merry-go-round is here this week and the small boy is happy.

Eli Page came here from his home in Illinois on his annual visit.

The Keystone Handle Factory was fired up last week for the first time.

C. W. Piper and wife of Wellsboro, are visiting friends and relatives here.

Miss Ada Maggs of Lock Haven, is visiting her uncle, N. A. McClosky this week.

Miss Florence Dreamer of Picture Rocks is visiting her sister, Mrs. Geo. Chase.

J. A. Dice and wife of Sterling Run, attended services at M. E. church Sunday.

The flyer on the B. S. & S. R. R. made its first regular trip June 5th.

Herman Losey, who has been laid up from an accident a few days was out again Tuesday.

The infant son of E. M. Peasley, died Monday morning. Funeral services by the Rev. Noble at Wycliffe school house.

The trustees of Camp 136, P. O. S. of A., are putting down a concrete walk in front of their building.

A merry-go-round took over \$500 out of this place last season, but they will not reap such a harvest this summer.

Cards are out for the wedding of Beatrice Dougherty and Ralph G. Summerson on Tuesday evening, the 13th at the home of the bride's parents.

The memorial sermon delivered by the Rev. Noble on Sunday morning was listened to by a large congregation.

The old veterans accompanied by the P. O. S. of A. attended in a body and listened to an eloquent sermon, and also a patriotic song on a graphophone by J. A. Dice of Sterling Run.

Warren Fisher, who came down from Driftwood Saturday to play with the Citizens Band was waylaid and shot at on his way home, one bullet going through his hat, so close to his head as to burn his hair.

The dynamite plant for this place is a sure thing in the near future. The stockholders met on Saturday and elected directors for the company and selected a name for their plant.

The directors are Messrs. O. L. Bailey, J. H. Baird, V. E. Crum, G. W. Coit and A. W. Willie. The name of the plant is to be The Enterprise Powder Co. Work will begin as soon as the plant can be laid out.

M. J. Hayes is visiting his son at Reno.

Robert Glenn and Floyd Lewis attended the wild west show at Emporium last week.

A. A. Douth of Eagle Rock, Pa., spent Sunday in town.

Mr. Frank Kepner was a business caller in Emporium Saturday.

Miss Florence Rhoads has accepted a position at the Valley House.

E. V. Dunlevie has returned from a business trip to Durbin, W. Va.

Mrs. E. V. Dunlevie has returned from a week's visit with friends in Buffalo.

Aden Swan and family are moving to Eagle Rock, Pa., where he has secured a good position.

Patrick Robinson and wife and Miss Minnie Furlong of Sterling Run, spent Sunday with Jos. Robinson and wife.

R. A. Lord has purchased a \$275.00 piano from G. L. Page, which he presented to his daughter.

MASON HILL.

Crops are looking fine, but apples will be scarce.

Mrs. Justina Miller is visiting with her daughter, Mrs. Walter Barr.

Claud Williams and wife of Medix Run, visited the former's parents over Sunday.

A number of our people took in the ice cream social at Sterling Run, Saturday evening, given by the K. O. T. M.

Mat. Barr passed over our hill Sunday evening, enroute to Sterling Run to see his best girl.

John F. Miller, Irvin J. Miller, of Millers Run and Wm. Miller of Medix Run, visited with their sister, Mrs. C. W. Williams on Tuesday last.

We notice C. W. Williams has sold his big team of draught horses to Mr. Piser, of Medix Run and is now drawing the ribbons over a fine pair of driving horses.

Miss Ethel Barr is making her home with her cousin, Mrs. May Berfield. The latter just returned from the hospital.

Mrs. C. W. Williams has fallen heir to a small hand axe, that was washed from a building that was torn to pieces in the 1861 flood. The axe is 75 years old.

Mr. Kirk Arnold, foreman for Wilson Bros., Lumber Co., expects to leave for the south in the near future.

Mrs. John Carson is on the sick list. Mrs. W. R. Smith was the guest of Mrs. J. F. Sullivan on Saturday.

Miss Nora Jordan and Miss Ava Brook of Emporium are visiting friends in town this week.

Mr. C. J. Miller has secured a position with the Wilson Bros., Lumber Co. John F. Sullivan, Jr. is confined to his bed with the measles.

Mrs. G. S. Hill spent Sunday with A. R. Smith and wife.

Miss Edna G. Collins was the guest of Miss Alice Jordan, Sunday.

Lawrence and Ray Smith of Reno, are visiting their parents Mr. and Mrs. L. H. Smith.

Operator Sullivan is advertising for a cure for mosquito bites, as the railroad company does not furnish window screens for the tower.

The Rev. Miss Etta Heyward is holding a series of revival meetings this week in the old church at Huntley.

The attendance is very good and the results are gratifying. Miss Heyward is a lady of pleasing personality and an earnest and sincere worker.

We hope to see a good attendance all the week from the surrounding country.

Peculiarity About Insurance. When insurance companies grant insurance a life, they are particular to have the person examined by a doctor to ascertain if he is in sound health.

They are most particular about the analysis of the urine for the diseases of the kidneys are the most fatal and so many people have diseased kidneys without knowing it.

If there are any symptoms they are usually (even by doctors) attributed to some other cause. Thompson's Barosma is the safest remedy to take for it will do good whether you have kidney trouble or not.

Thompson's Barosma gives rest to the nerves, 50c to \$1.00. For sale by R. C. Dodson.

A Valuable Publication. The Passenger Department of the Pennsylvania Railroad Company has published the 1905 edition of the Summer Excursion Route Book.

This work is designed to provide the public with descriptive notes of the principal Summer resorts of the United States, with the best routes for reaching them, and the rates of fare.

It contains all the principal seashore and mountain resorts in New England, the Middle, Southern and Western States, and in Canada, and over seventeen hundred different routes.

The book has been compiled with the greatest care, and altogether is the most complete and comprehensive handbook of Summer travel ever offered to the public.

The cover is handsome and striking, printed in colors, and book contains several maps, presenting the exact routes over which tickets are sold.

The book is profusely illustrated with fine half-tone cuts of scenery at the various resorts and along the lines of the Pennsylvania Railroad.

This very interesting book may be procured at any Pennsylvania Railroad ticket office at the nominal price of ten cents, or, upon application of Geo. W. Boyd, General Passenger Agent, Broad Street Station, Philadelphia, Pa., by mail for twenty cents.

Round-Trip.

On account of the convention of the American Medical Association to be held in Portland, Ore., July 14, the Pennsylvania Railroad Company will run a personally-conducted tour, visiting the beautiful resorts in the Canadian Rockies, Seattle, Tacoma, and Portland, allowing four days in the latter city for attending the sessions of the convention and for visiting the Lewis and Clark Exposition, and five one-half days in the Yellowstone Park, a full and complete tour of that wonderful. Tickets covering every necessary expense en route, except hotel accommodations in Portland, will be sold at the low rate of \$215 from all stations on the Pennsylvania Railroad, except Pittsburgh, from which the rate will be \$210.

A special train of high-grade Pullman equipment will leave New York, Philadelphia, Harrisburg, Monday, July 3. The route will be via Chicago and St. Paul to Banff Hot Springs, Laggan, and Glacier, in the Canadian Rockies, thence to the Pacific Coast. Returning the route will lie through the States of Washington, Oregon, Idaho, and Montana, to the Yellowstone Park, and thence via Billings and Omaha to Chicago, reaching New York on July 26. For further information consult Pennsylvania Railroad ticket agents. A descriptive itinerary will be sent on application to Geo. W. Boyd, General Passenger Agent, Broad Street Station, Philadelphia, Pa. 3496-14-4t.

Low-Rate Tour to Denver. On account of the Epworth League International Convention, to be held in Denver, Col., July 5 to 9, the Pennsylvania Railroad Company has arranged a tour to Denver under its Personally Conducted System. A special train of high-grade Pullman equipment will leave New York, Philadelphia, Harrisburg, Altoona, and Pittsburgh on Monday, July 3, arriving Denver at 12:30 noon on Wednesday, July 5. Tickets covering round trip transportation, Pullman accommodations (one berth) going, and all meals in dining car when traveling on special train, will be sold at the following very low rates: Williamsport, \$59.75; Altoona, \$58.75; and at proportionate rates from other stations.

These tickets will be good for passage to either Denver, Colorado Springs, or Pueblo, and will be good for return passage on regular trains to leave either of the above-mentioned points not later than July 14. Deposit of tickets with Joint Agent at either Denver, Colorado Springs, or Pueblo not later than July 14 and payment of fee of fifty cents secures an extension of return limit to leave either of the above points not later than August 8.

These liberal return limits will enable tourists to take advantage of the many delightful side trips to resorts in the Colorado Mountains, the Yellowstone Park, the Grand Canyon of Arizona, and the Lewis and Clark Exposition at Portland, for which special reduced-rate tickets will be on sale at Denver, Colorado Springs and Pueblo.

For further information concerning specific rates, stop-over privileges, and returning routes consult ticket agents. A descriptive itinerary will be mailed upon application to Geo. W. Boyd, General Passenger Agent, Broad Street Station, Philadelphia, Pa. 3497-14-4t.

Low Rate Excursion to Portland, Oregon. Account Lewis and Clark Exposition will be in effect via Wisconsin Central Railway. If you intend to go to Portland this year ask the ticket agent to make your ticket read via Wisconsin Central between Chicago and St. Paul. Pullman sleepers, free reclining chair cars and a La Carte meals make the journey comfortable and pleasant. Further information cheerfully given by addressing W. H. Allen, T. A., 621 Park Building, Pittsburg, Pa. 137-t.

Bargain in Books. A complete set of Britannica Encyclopaedia, consisting of thirty volumes and key. Are all new and in original packages. Will be sold at a bargain. Apply at Press office. 36tf

Warning. All persons are hereby forbidden from trespassing upon the property of this Company without a permit from this office, or the Superintendent at the works.

KEYSTONE POWDER MFG. CO., Emporium, Pa., August 1st, 1905. 24-tf.

THE Windsor Hotel

Between 12th and 13th Sts., on Filbert St. Philadelphia, Pa. Three minutes WALK from the Reading Terminal. Five minutes WALK from the Penn'a R. R. Depot.

European Plan \$1.00 per day and upwards. American Plan \$2.00 per day. FRANK M. SCHEIBLEY, Manager.

HUMPHREYS' WITCH HAZEL OIL

FOR PILES, ONE APPLICATION BRINGS RELIEF. SAMPLE MAILED FREE.

At Druggists, 25 cents, or mailed. Humphreys' Medicine Co., Cor. William and John Streets, New York.

NERVOUS DEBILITY, Vital Weakness and Prostration from overwork and other causes.

Humphreys' Homeopathic Specific No. 28, in use over 40 years, the only successful remedy. \$1 per vial, or special package for serious cases, \$5.

Sold by Druggists, or sent prepaid on receipt of price. Humphreys' Med. Co., William & John Sts., N. Y.

Pennsylvania RAILROAD.

PHILADELPHIA AND ERIE RAILROAD DIVISION. In effect May 28, 1905.

TRAINS LEAVE EMPORIUM EASTWARD 10 A. M.—Sundays only for Reno and Week days for Sunbury, Wilkesbarre, Scranton, Hazleton, Pottsville, Harrisburg and intermediate stations, arriving at Philadelphia 6:23 P. M., New York 9:30 P. M., Baltimore 6:06 P. M., Washington 7:15 P. M., Pullman Parlor car from Williamsport to Philadelphia and passenger coaches from Kane to Philadelphia and Williamsport to Baltimore and Washington.

12:45 P. M.—Emporium Junction daily for Sunbury, Harrisburg and principal intermediate stations, arriving at Philadelphia, 7:32 p. m.; New York, 10:28 p. m.; Baltimore, 7:29 p. m.; Washington, 8:35 p. m. Vestibule Parlor cars and passenger coaches, Buffalo to Philadelphia and Washington.

3:30 P. M.—Daily for Harrisburg and intermediate stations, arriving at Philadelphia, 4:23 A. M., New York 7:13 A. M., Baltimore, 4:08 A. M., Sunday, Baltimore, 7:16 A. M., Washington 8:30 A. M. Pullman sleeping cars from Harrisburg to Philadelphia and New York. Philadelphia passenger cars remain sleeper undisturbed until 7:30 A. M.

10:30 P. M.—Daily for Sunbury, Harrisburg and intermediate stations arriving at Philadelphia 7:17 A. M., New York 9:33 A. M., weekdays, 10:38 A. M., Sunday, Baltimore, 7:16 A. M., Washington 8:30 A. M. Pullman sleeping cars from Erie, Buffalo and Williamsport to Philadelphia and Buffalo, Williamsport to Philadelphia and Williamsport to Baltimore.

12:25 A. M.—Emporium Junction daily for Sunbury, Harrisburg and principal intermediate stations, arriving at Philadelphia, 7:32 a. m.; New York, 9:33 a. m., weekdays; (10:28 Sunday); Baltimore, 8:36 a. m.; Vestibule, Buffet, Sleeping Cars and Passenger coaches, Buffalo to Philadelphia and Washington.

WESTWARD. 5:10 A. M.—Emporium Junction—daily for Erie, Ridgway, and week days for DuBois, Clearfield and intermediate stations, 10:30 A. M.—Daily for Erie and week days for DuBois and intermediate stations. 4:23 P. M.—Daily for Erie and intermediate stations.

RIDGWAY AND CLEARFIELD R. R. CONNECTIONS. (Week days.)

Table with columns: Station, P.M., A.M., A.M., P.M., P.M., P.M. Rows include Erie, DuBois, Clearfield, Ridgway, etc.

Table with columns: Station, P.M., A.M., A.M., P.M., P.M., P.M. Rows include Buffalo, Altoona, etc.

Table with columns: Station, P.M., A.M., A.M., P.M., P.M., P.M. Rows include Erie, DuBois, etc.

Table with columns: Station, P.M., A.M., A.M., P.M., P.M., P.M. Rows include Erie, DuBois, etc.

Table with columns: Station, P.M., A.M., A.M., P.M., P.M., P.M. Rows include Erie, DuBois, etc.

Table with columns: Station, P.M., A.M., A.M., P.M., P.M., P.M. Rows include Erie, DuBois, etc.

Table with columns: Station, P.M., A.M., A.M., P.M., P.M., P.M. Rows include Erie, DuBois, etc.

Table with columns: Station, P.M., A.M., A.M., P.M., P.M., P.M. Rows include Erie, DuBois, etc.

Table with columns: Station, P.M., A.M., A.M., P.M., P.M., P.M. Rows include Erie, DuBois, etc.

Table with columns: Station, P.M., A.M., A.M., P.M., P.M., P.M. Rows include Erie, DuBois, etc.

Table with columns: Station, P.M., A.M., A.M., P.M., P.M., P.M. Rows include Erie, DuBois, etc.

Table with columns: Station, P.M., A.M., A.M., P.M., P.M., P.M. Rows include Erie, DuBois, etc.

Table with columns: Station, P.M., A.M., A.M., P.M., P.M., P.M. Rows include Erie, DuBois, etc.

Table with columns: Station, P.M., A.M., A.M., P.M., P.M., P.M. Rows include Erie, DuBois, etc.

Table with columns: Station, P.M., A.M., A.M., P.M., P.M., P.M. Rows include Erie, DuBois, etc.

Table with columns: Station, P.M., A.M., A.M., P.M., P.M., P.M. Rows include Erie, DuBois, etc.

Table with columns: Station, P.M., A.M., A.M., P.M., P.M., P.M. Rows include Erie, DuBois, etc.

Table with columns: Station, P.M., A.M., A.M., P.M., P.M., P.M. Rows include Erie, DuBois, etc.

Table with columns: Station, P.M., A.M., A.M., P.M., P.M., P.M. Rows include Erie, DuBois, etc.

Table with columns: Station, P.M., A.M., A.M., P.M., P.M., P.M. Rows include Erie, DuBois, etc.

Table with columns: Station, P.M., A.M., A.M., P.M., P.M., P.M. Rows include Erie, DuBois, etc.

Table with columns: Station, P.M., A.M., A.M., P.M., P.M., P.M. Rows include Erie, DuBois, etc.

Table with columns: Station, P.M., A.M., A.M., P.M., P.M., P.M. Rows include Erie, DuBois, etc.

Advertisement for Kinloch House Paint, featuring the slogan 'NOW IS THE TIME TO PAINT' and listing Hurteau & Forbes as the sole agents.

Advertisement for Emporium Furniture Co. featuring the slogan 'Our New Year Introductory Sale'.

Advertisement for Emporium Furniture Co. featuring the slogan 'Keep Your Eye on Us all this Year and Watch Us Grow.' and listing Bernard Egan as the manager.

Advertisement for Emporium Furniture Co. featuring the slogan 'Undertaking.' and listing Bernard Egan as the manager.

Advertisement for Emporium Furniture Co. featuring the slogan 'Our New Year Introductory Sale'.

Advertisement for Emporium Furniture Co. featuring the slogan 'Keep Your Eye on Us all this Year and Watch Us Grow.' and listing Bernard Egan as the manager.

Advertisement for Emporium Furniture Co. featuring the slogan 'Undertaking.' and listing Bernard Egan as the manager.

Advertisement for Emporium Furniture Co. featuring the slogan 'Our New Year Introductory Sale'.

Advertisement for Emporium Furniture Co. featuring the slogan 'Keep Your Eye on Us all this Year and Watch Us Grow.' and listing Bernard Egan as the manager.

Advertisement for Emporium Furniture Co. featuring the slogan 'Undertaking.' and listing Bernard Egan as the manager.

Advertisement for Emporium Furniture Co. featuring the slogan 'Our New Year Introductory Sale'.

Advertisement for Emporium Furniture Co. featuring the slogan 'Keep Your Eye on Us all this Year and Watch Us Grow.' and listing Bernard Egan as the manager.

Advertisement for Emporium Furniture Co. featuring the slogan 'Undertaking.' and listing Bernard Egan as the manager.

Advertisement for Emporium Furniture Co. featuring the slogan 'Our New Year Introductory Sale'.

Advertisement for Emporium Furniture Co. featuring the slogan 'Keep Your Eye on Us all this Year and Watch Us Grow.' and listing Bernard Egan as the manager.

Advertisement for Emporium Furniture Co. featuring the slogan 'Undertaking.' and listing Bernard Egan as the manager.