

Business Cards.

B. W. GREEN, ATTORNEY-AT-LAW, EMPORIUM, PA. A business relating to estate, collections, real estate, orphan's court and general business will receive prompt attention.

F. D. LEFT, ATTORNEY-AT-LAW and INSURANCE AGT. EMPORIUM, PA. I have numerous calls for hemlock and hardwood timber lands, also stumpage, etc., and parties desiring either to buy or sell will do well to call on me.

THE NOVELTY RESTAURANT, (Opposite Post Office), EMPORIUM, PA. I take pleasure in informing the public that I have purchased the old and popular Novelty Restaurant, located on Fourth street.

W. C. RIECK, D. D. S., DENTIST. Office over Taggart's Drug Store, Emporium, Pa. Gas and other local anesthetics administered for the painless extraction of teeth.

PILES R. D. S. Suppository. A cure guaranteed if you use Dr. Matt. Thompson, Supt. of the Pennsylvania State Prison, Schuylkill County, Pa. writes: "I can say to you that I have used your Piles R. D. S. Suppository for a number of years, and I have found no remedy to equal yours."

Kodol Dyspepsia Cure. Digests what you eat. BANNER SALVE. The most healing salve in the world.

Kodol Dyspepsia Cure. Digests what you eat. POPULAR SCENIC ROUTE. Buffalo & Susquehanna Railroad Company.

Official Condensed Time Table in Effect June 23, 1902.

Table with columns: Day Only, Week Days, STATIONS, Daily, Week Days. Rows include Emporium, Addison, Elkland, Knoxville, Westfield, Gaines Junction, Galeton, Cross Fork Junction, Cross Fork, Pa., Wharton, Sinamshoning, Austin, Keating Summit, Ansonia, South Gaines, Gaines Junction, Galeton, Walton, Newfield Junction, Genesee, Shongo, Wellsville.

At Keating Summit with B. & A. V. Div. of Pennsylvania R. R. At Ansonia with N. Y. C. & H. R. R. for all points north and south. At Newfield Junction with C. & P. A. Ry., Union Station.

At Ansonia with N. Y. C. & H. R. R. for all points north and south. At Keating Summit with B. & A. V. Div. of Pennsylvania R. R. At Wellsville with Erie R. R. for points east and west.

At Keating Summit with B. & A. V. Div. of Pennsylvania R. R. At Ansonia with N. Y. C. & H. R. R. for all points north and south. At Newfield Junction with C. & P. A. Ry., Union Station.

TIME TABLE No. 11. COUDERSPORT & PORT ALLEGANY R. R. Taking effect May 27th, 1905.

Table with columns: STATIONS, 10, 8, 4, 6, 3. Rows include Port Allegany, Coleman, Burtville, Carleton, Knowlton's, Mena, Onsted, Hammonds, Coudersport, North Coudersport, Frick's, Coleburg, Seven Bridgton, Raymond's, Gold, Newfield Junction, Perkins, Carpenter's, Crowell's, Ulysses.

Table with columns: STATIONS, 1, 6, 3. Rows include Ulysses, Crowell's, Perkins, Newfield Junction, Seven Bridgton, Raymond's, Gold, Coleburg, Frick's, North Coudersport, Coudersport, Hammonds, Onsted, Knowlton's, Carleton, Burtville, Coleman, Port Allegany.

(*) Flag stations. (**) Trains do not stop at these stations. Train Nos. 3 and 10 with carry passengers. Trains 8 and 10 do.

Connections—At Ulysses with Fall Brook R'y for points north and south. At B. & A. S. Junction with Buffalo & Susquehanna R. R. north for Wellsville, south for Galeton and Ansonia.

Connections—At Ulysses with Fall Brook R'y for points north and south. At B. & A. S. Junction with Buffalo & Susquehanna R. R. north for Wellsville, south for Galeton and Ansonia.

Connections—At Ulysses with Fall Brook R'y for points north and south. At B. & A. S. Junction with Buffalo & Susquehanna R. R. north for Wellsville, south for Galeton and Ansonia.

Connections—At Ulysses with Fall Brook R'y for points north and south. At B. & A. S. Junction with Buffalo & Susquehanna R. R. north for Wellsville, south for Galeton and Ansonia.

Connections—At Ulysses with Fall Brook R'y for points north and south. At B. & A. S. Junction with Buffalo & Susquehanna R. R. north for Wellsville, south for Galeton and Ansonia.

Connections—At Ulysses with Fall Brook R'y for points north and south. At B. & A. S. Junction with Buffalo & Susquehanna R. R. north for Wellsville, south for Galeton and Ansonia.

Connections—At Ulysses with Fall Brook R'y for points north and south. At B. & A. S. Junction with Buffalo & Susquehanna R. R. north for Wellsville, south for Galeton and Ansonia.

Connections—At Ulysses with Fall Brook R'y for points north and south. At B. & A. S. Junction with Buffalo & Susquehanna R. R. north for Wellsville, south for Galeton and Ansonia.

Connections—At Ulysses with Fall Brook R'y for points north and south. At B. & A. S. Junction with Buffalo & Susquehanna R. R. north for Wellsville, south for Galeton and Ansonia.

Connections—At Ulysses with Fall Brook R'y for points north and south. At B. & A. S. Junction with Buffalo & Susquehanna R. R. north for Wellsville, south for Galeton and Ansonia.

Connections—At Ulysses with Fall Brook R'y for points north and south. At B. & A. S. Junction with Buffalo & Susquehanna R. R. north for Wellsville, south for Galeton and Ansonia.

MUKDEN HAS FALLEN.

The Greatest Defeat in the History of the War Is Announced by Gen. Kuropatkin

CAPTURED MANY PRISONERS

Enormous Quantities of Supplies and Guns Fell into the Hands of the Victorious Japanese When They Entered Mukden.

The fate of the Russian army of upwards of a quarter of a million men and 2,000 pieces of artillery, with which it was expected Gen. Kuropatkin and his lieutenants could prevent the advance of the Japanese beyond the Shakhe and Hun river positions, still is in the balance.

On the first of January, according to correspondents who have just returned from Mukden, the Russians had in position along the Shakhe and Hun rivers 1,500 guns, including a number of six and eight-inch guns in concrete foundations straddling the railway just north of Shakhe station.

The casualties on both sides have been enormous. The Russian Sixteenth army corps was practically annihilated at Tatchekiao. Eight thousand Russians fell at Leukuano. St. Petersburg, March 11.—Last night all our armies commenced to retreat.

St. Petersburg, March 11.—Last night all our armies commenced to retreat. The greatest defeat in the history of the Russian-Japanese war was made known in St. Petersburg last night, but only in the paltry eight words from Gen. Kuropatkin to Emperor Nicholas, which were flung about the streets in newspaper extras and passed from mouth to mouth.

Strikers Are Weakening. New York, March 11.—Although the local leaders are continuing the fight, despite the fact that the national leaders have repudiated their action in calling the men out, the strike on the subway and elevated railway systems has passed the acute stage and trains were run Friday with little delay, the strike breakers quickly learning their new duties, while many of the old men were back in the positions which they left on Tuesday morning.

Depends on a Legal Decision. Denver, March 10.—Pending an opinion from the Colorado supreme court asked for yesterday as to whether the state legislature has the power to declare the office of governor or vacant, the decision of the Peabody and Adams gubernatorial contest will be deferred.

Peasants in Revolt. London, March 10.—A dispatch from Kiev to the Daily Mail says: "An army of 300 peasants from the Orlovka district is advancing southwestward. Burning and looting of estates is in progress. Eighteen estates have already been sacked."

Rudolph Is Granted a Respite. Jefferson City, Mo., March 11.—Following the decision of the supreme court refusing to grant a rehearing to William Rudolph, convicted of the murder of Detective Charles Schumacher at Union, Mo., Gov. Folk has granted a respite of 30 days. Rudolph was sentenced to be hanged on March 17, and the petition for the respite was signed by large numbers of Irish Catholics, who claimed that an execution in St. Louis on the morning of St. Patrick's day would cast a gloom over the celebration planned in honor of Ireland's patron saint.

NOT ANXIOUS TO MARRY.

King Alfonso of Spain Disgusted with Matchmakers—Will Remain Single for Awhile.

Madrid.—Too many proposals of marriage made to the young king have so disgusted him that he now declares he will not marry before he is 21 years old. The ministers of the kingdom were the first to suggest the advisability of an early marriage to the king, and because of the advantages resulting from a closer alliance with the royal family of England they selected one of the duke of Connaught's daughters.



KING ALPHONSO OF SPAIN. (He Declares He Will Not Marry Before He Is 21 Years Old.)

became a Catholic. In some way or other, however, the plans miscarried in diplomatic quarters. The duke of Connaught will not visit Madrid even on his return journey to England, and the Spanish ambassador in London has just tendered his resignation.

Then came the pet project of Emperor William of Germany, who wanted Princess Marie Von Mecklenburg to become queen of Spain. The pope's good offices were also enlisted in this scheme, but nothing has come of it.

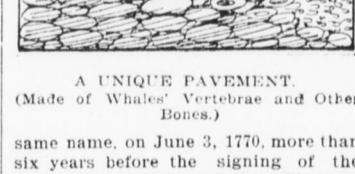
Famly considerations suggested the desirability of the king's marriage with his cousin Gabrielle, daughter of Archduke Frederick of Austria. The queen mother was so much taken with this idea that the whole family, which includes three marriageable daughters, was recently sent for in great haste, and has just ended a three weeks' sojourn at the Spanish court.

Nothing, however, has materialized, and the young king is still heart whole and fancy free. In fact, he has now taken absolutely upon himself the selection of a suitable wife and will not listen to suggestions from anyone.

PAVED WITH WHALES' BONES

Walk Made of Unusual Substance in California City Many Years Ago Still in Good Condition.

San Francisco.—One of the most picturesque towns in California or on the Pacific slope is Monterey. Historically, it is the most interesting town in the western states. It was the capital of Alta California when the Spanish held sway, in the days "before the Gringo came." Father Junipero Serra landed at Monterey, which is on the bay of the



A WHALES' PAVEMENT (Made of Whales' Vertebrae and Other Bones.)

same name, on June 3, 1770, more than six years before the signing of the declaration of independence. The missionary priest preached to the Indians and founded the mission church of San Carlos, which is still in excellent preservation. Many relics of Spanish rule are to be seen in Monterey, such as the old custom house, the jail, etc.

Besides being the capital of the Spanish province, Monterey was an important whaling station, many of those great mammals being found in Monterey bay. The walk leading from the street to the main door of San Carlos mission church is paved with the vertebrae and other bones of whales. The accompanying cut from a photograph, made at the end of August last, shows the composition and present condition of this remarkable pavement.

Who is Your Clothier?

It's R. SEGER & CO., you are getting the right kind of merchandise. There is no small or grand deception practiced in their store. Sustained success demonstrates that there is "growth in truth" in the retailing of

NEW AND UP-TO-DATE CLOTHING AT POPULAR PRICES. R. SEGER & CO.

Good Cedar Shingles. WILL KEEP OUT THE RAIN. WE HAVE THEM IN ALL GRADES. C. B. HOWARD & CO.

SCHMELZ & CO.'S Sluice Pipe.

IMPROVE YOUR ROADS with STEEL and WOOD SLUICING. The Steel pipe is made of cold rolled, heavy sheet steel, flayed so as to leave it smooth inside. The pipe is covered with a preparation that makes it rust proof.

What are Sluice Pipes Used For? They are used on roads and highways to convey water under the road bed from drains and ditches to keep the road bed dry and prevent washouts in heavy rains and showers.

Schmelz & Co., Coudersport, Pa.

PATENTS

We promptly obtain U. S. and Foreign PATENTS. Send model, sketch or photo of invention for free report on patentability. For free book, How to Secure TRADE-MARKS, write Patents and TRADE-MARKS to

CASNOW & CO. OPPOSITE U. S. PATENT OFFICE WASHINGTON, D. C.

Madam French Female Dean's Pills. A safe, certain relief for Suppressed Menstruation, Never Known to Fail. Send for Free Sample!

EVERY WOMAN Sometimes needs a reliable monthly regulating medicine. DR. PEAL'S PENNYROYAL PILLS. Are prompt, safe and certain in result.

Pennsylvania RAILROAD.

PHILADELPHIA AND ERIE RAILROAD DIVISION. In effect Nov. 27, 1904. TRAINS LEAVE EMPORIUM EASTWARD. 9:10 A. M.—Week days for Sunbury, Williamsburg, Scranton, Hazleton, Pottsville, Harrisburg and intermediate stations, arriving at Philadelphia 6:23 P. M., New York 9:30 P. M., Baltimore 8:00 P. M., Washington 7:15 P. M., Pullman Parlor car from Williamsport to Philadelphia and passenger coaches from Kane to Philadelphia and Williamsport to Baltimore and Washington.

WESTWARD. 6:10 A. M.—Emporium Junction—daily for Erie, Ridgway, and week days for DuBois, Clearfield and intermediate stations. 10:30 A. M.—Daily for Erie and week days for DuBois and intermediate stations.

Table with columns: SOUTHWARD, Stations, NORTHWARD. Rows include Emporium, Ridgway, Mill Haven, Grodand, Shorris Mills, Blue Rock, Carrier, Brookville, Lanes Mills, McMinn's Mt., Falls Creek, DuBois, Reynoldsville, Brookville, New Bethlehem, Red Bank, Pittsburg.

BUFFALO & ALLEGHENY VALLEY DIVISION. Leave Emporium Junction for Port Allegany, Olean, Arcade, East Aurora and Buffalo. Train No. 107, daily, arriving at Buffalo 4:05 A. M. Train No. 115, daily, arriving at Buffalo 4:15 P. M.

LOW GRADE DIVISION.

Table with columns: STATIONS, 109, 113, 101, 105, 107, 951. Rows include Pittsburg, Red Bank, Lawsonham, New Bethlehem, Brookville, Reynoldsville, Falls Creek, Sabula, Pennfield, Bennezetts, Driftwood, via P. & E. Div., Driftwood, Emporium, Ar.

Table with columns: STATIONS, 108, 106, 102, 114, 110, 952. Rows include via P. & E. Div., Emporium, Driftwood, via L. G. Div., Driftwood, Pennfield, Sabula, DuBois, Falls Creek, Reynoldsville, Brookville, New Bethlehem, Lawsonham, Red Bank, Pittsburg.

*Daily. †Daily except Sunday. ‡Sunday only. §Half Stop. On Sunday only train leaves Driftwood 8:23 a. m., arrives at DuBois 10:00 a. m. Returning leaves DuBois 2:30 p. m., arrives at Driftwood 3:40 p. m., stopping at intermediate stations.

For Time Tables and further information, apply to Ticket Agent.

J. R. WOOD, Passenger Traffic Mgr. W. W. ATTERBURY, GEO. W. BOYD, General Manager. Gen'l Passenger Agt.

THE PITTSBURG, SHAMMUT & NORTHERN R. R.

Through Passenger Service Between St. Marys, Brockwayville, Shammut, Snetthport, Olean, Friendship, Angelica, Hornellsville, Wayland, Buffalo, and New York.

Effective Sunday, May 29, 1905. Eastern Standard Time. Time of Trains at St. Marys.

DEPART. 7:35 A. M.—For Kersey (Arr. 8:14 a. m.), Brno daie (Arr. 8:56 a. m.), Weedsville (Arr. 9:03 a. m.), Elbon (Arr. 8:46 a. m.), Shawmut (Arr. 9:08 a. m.), Brockwayville (Arr. 9:42 a. m.), 12:33 P. M.—For Clearmont (Arr. 1:37 p. m.), Snetthport (Arr. 2:20 p. m.), connecting for Bradford (Arr. 3:05 p. m.), Eldred (Arr. 3:49 p. m.), Olean (Arr. 3:40 p. m.), connecting for Buffalo (Arr. 6:10 p. m.) Bolivar (Arr. 3:33 p. m.), Friendship (Arr. 4:08 p. m.), Angelica (Arr. 4:24 p. m.), Hornellsville (Arr. 6:10 p. m.), Wayland (Arr. 7:23 p. m.), connecting at Wayland with D. L. & W. R. R. and at Hornellsville with Erie R. R., for all points East and West.