

JAPANESE-RUSSIAN WAR.

Latest Telegraphic News of the Great Struggle in the Far East.

London, Feb. 16.—The voluminous dispatches from the far east published here this morning are again characterized by absence of real light on the situation.

Tokio, Feb. 17.—A report has just reached here that the Japanese torpedo fleet reattacked the Russian fleet at Port Arthur on February 14 and it is thought that one Russian warship was captured.

St. Petersburg, Feb. 17.—A dispatch received here from Port Arthur, dated February 15, denies that the Japanese are landing at Ching-Wang-Too, a port on the southern border of Manchuria.

The Russian cruiser Boyarin was blown up by a mine February 13 in the same manner as was the Russian torpedo transport Yenisei.

Berlin, Feb. 17.—The St. Petersburg correspondent of the Tagliche Rundschau says that 600 Russian soldiers have been frozen to death while marching across Lake Baikal, eastern Siberia.

St. Petersburg, Feb. 18.—The rigid

"Of the fortress and garrison: One man killed, one man severely wounded and five men slightly wounded."

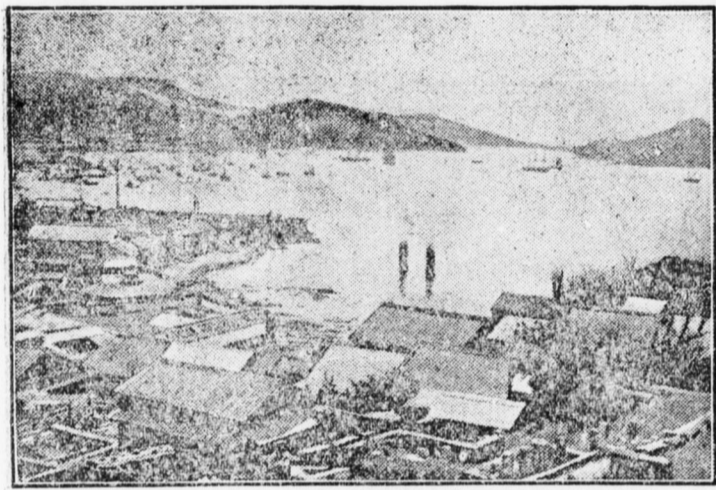
Port Arthur, Feb. 19.—The repairs to the Russian warships damaged during the bombardment of February 9 are rapidly proceeding.

The railroad is undamaged and Port Arthur is calm. All the troops are eagerly awaiting an opportunity to meet the Japanese in an open fight.

Paris, Feb. 19.—An eminent military authority connected with one of the embassies said yesterday that Port Arthur was practically besieged and it was a serious question whether this would not compel either the abandonment or the surrender of the fortress with its men and material.

London, Feb. 19.—The Japanese legation here received an official dispatch from Tokio last night saying it was not true that any Japanese vessels had been destroyed so far, in any of the various naval engagements, and that all necessary repairs had already been made.

This message also denies the report that the Japanese were driven from the neighborhood of Kin-Chau,



NAGASAKI HARBOR, THE JAPANESE NAVAL STRONGHOLD.

after a skirmish in which 150 Japanese were taken prisoners, and declares that the Japanese made no attempt to land at Pigeon Bay.

Tokio, Feb. 20.—The response of Japan to the request of China for a statement of its position in regard to the neutrality of the latter country was made public Friday. Its text is as follows:

"The imperial government, desiring to avoid as far as possible a disturbance of the peaceful condition of affairs which prevails in China, will in all parts of Chinese territory excepting the regions now occupied by Russia, respect the neutrality of China so long as Russia does the same."

"Furthermore, the rights of Chinese officials and inhabitants within the zone of military operations will be fully protected by the imperial forces, so far as military necessity permits. In the event, however, that they should extend aid to the enemy of Japan, the imperial government reserve to themselves the right to take such action as the circumstances require."

It says in conclusion that the war is not being waged by the Japanese for the purpose of conquest, but solely in defense of her legitimate interests, and consequently the imperial government has no intention to acquire territory at the expense of China as a result of the conflict.

St. Petersburg, Feb. 20.—War Minister Kuropatkin, who is going to the far east, will be appointed commander-in-chief of the army operations there and Vice Admiral Mankaroff, who is now on his way east on a train which is expected to reach Port Arthur in ten days, is to be commander-in-chief of the navy.

The Russian government yesterday abolished the censorship on all news and other telegrams going abroad.

The international censorship is to be retained, but foreign dispatches are to be entirely free. Inasmuch as a state of war exists, telegrams from the theatre of hostilities will be subject to the same kind of military censorship enforced in all countries under similar circumstances.

Paris, Feb. 20.—A representative of the Matin who has reached the center of the Russian military concentration at Harbin after great hardships, due to the trans-Siberian railway trains being crowded with thousands of soldiers, in a dispatch from Harbin confirms the announcement that that place will be the main base of the Russian land operations.

Thus far the base has succeeded in maintaining its communication with Port Arthur. The concentration of troops proceeds systematically and provision has been made for the speedy arrival of 120,000 men from Moscow, Kiev and Warsaw.

Before 12 days shall have elapsed the Russians will have an army of 400,000 men in Manchuria.

DeWitt

DeWitt is the name to look for when you go to buy Witch Hazel Salve.

Witch-Hazel

All others are counterfeits—base imitations, cheap and worthless—even dangerous.

SALVE

PREPARED BY E. C. DeWitt & Co., Chicago



REVIVO RESTORES VITALITY

Made a Well Man of Me. THE GREAT FRENCH REMEDY produces the above results in 30 days.

ROYAL MEDICINE CO., CHICAGO, ILL.

Sold by R. C. Dodson, Emporium, Pa

50 YEARS' EXPERIENCE PATENTS

Anyone sending a sketch and description may freely consult our office without charge.

MUNN & Co. 361 Broadway, New York

TRADE MARKS PATENTS

Send model, sketch or photo of invention for patent or trademark.

GASNOW

Opposite U. S. Patent Office, Washington, D. C.

Madam French Dean's Pills

A safe, certain relief for Suppressed Menstruation.

EVERY WOMAN DR. PEAL'S PENNYROYAL PILLS

Are prompt, safe and certain in result.

THE EMPORIUM Bottling Works

Is prepared to serve his patron with the finest domestic Wines and Beers.

Celebrated Erie Beer

ALWAYS READY. Send your orders by letter or phone early.

PILES RUDY'S PILE SUPPOSITORY

A cure guaranteed if you use RUDY'S PILE SUPPOSITORY.

SEVEN MEN SHOT.

Two of the Wounded Men May Not Live.

Constables Organized a Posse of Citizens and Attempted to Close Up a Pool Room at Madison, Ill.—A Pitched Battle Follows.

St. Louis, Feb. 20.—In an effort to close up a pool room that has for a long time operated in the outskirts of Madison, Ill., across the river from St. Louis, three constables, augmented by a posse of citizens, and bearing warrants for the arrest of six men connected with the pool room, precipitated a riot yesterday which resulted in the shooting of seven men.

Warrants had been sworn out before Justice of the Peace Isenmeyer, of Granite City, adjoining Madison, and placed in the hands of Constable John Glass and two other constables for the arrest of Whitefield Brooks and Eugene Wall, of Granite City, and Thomas Riley, Charles Greenfield, Thomas Manley and Martin Johns, of St. Louis, charging them with being connected with the pool room.

Several days ago warrants were issued for State Senator David Nelson, of Missouri, charging him with being a pool seller, and Victor Schuler, charging him with conducting the pool room and being custodian of the funds. Schuler was arrested Thursday and gave bond of \$500 pending a hearing.

Proceeding through the neighborhood for the next half hour the constables organized a posse of armed citizens numbering about 50 persons. The constables and posse then returned to the pool room and entered. They were at once ordered out and the doors were ordered locked.

REVIEW OF TRADE.

Bad Weather Alone Prevents a Definite Revival of Business.

Inclement weather alone prevents a definite revival of business. Outdoor work is retarded and traffic impeded to an extent that cannot be accurately measured.

Several leading branches of manufacture are increasing active capacity, and thousands of interior buyers are placing liberal orders at the principal cities.

Failures this week numbered 287 in the United States, against 247 last year, and 29 in Canada, compared with 26 a year ago.

PAINT FACTORY BURNED.

A Big Blaze at Brooklyn, N. Y. Hundreds of Families Evicted from Tenements.

New York, Feb. 20.—A destructive fire broke out last night in the extensive paint works of F. W. Devoe & C. T. Reynolds Co., Brooklyn.

Over 1,500 families were evicted from the tenements and given temporary refuge by neighbors.

Arrest of a Counterfeiter. Harrisburg, Pa., Feb. 20.—Benton Bowman, of this city, was arrested here Friday, charged with making counterfeit silver dollars, half dollars, quarter dollars and nickels.

BUFFALO & SUSQUEHANNA R. R.

Time Table taking Effect June 23, 1902.



"The Grand Scenic Route."

Table with columns for stations (Lv. K'ing Smt., Austin, etc.) and times (daily, A.M., P.M.).

READ UP.

Table with columns for stations (Lv. K'ing Smt., Austin, etc.) and times (A.M., P.M.).

STATIONS.

Table with columns for stations (Lv. Ansonia, etc.) and times (A.M., P.M.).

CONNECTIONS.

At Keating Summit with P. R. R. Buf. Div. for all points north and south.

BUFFALO & ALLEGHENY VALLEY DIVISION.

Table with columns for stations (Buffalo, etc.) and times (A.M., P.M.).

LOW WARREN DIVISION.

Table with columns for stations (Pittsburg, etc.) and times (A.M., P.M.).

EASTBOUND.

Table with columns for stations (Pittsburg, etc.) and times (A.M., P.M.).

WESTBOUND.

Table with columns for stations (Pittsburg, etc.) and times (A.M., P.M.).

C. G. SCHMIDT'S

Popular Bakery. FRESH BREAD, PIES, FANCY CAKES, ICE CREAM.

GERMANIA SAVINGS BANK

WOOD AND DIAMOND STREETS PITTSBURG, PA.

Pennsylvania RAILROAD.

PHILADELPHIA AND ERIE RAILROAD DIVISION.

In effect Nov. 29, 1903. TRAINS LEAVE EMPORIUM EASTWARD 6 15 A. M.—Week days for Sunbury, Williamsport, Scranton, Hazleton, Pottsville, Harrisburg and intermediate stations.

12:25 P. M. (Emporium Junction) daily for Sunbury, Harrisburg and principal intermediate stations.

5:10 A. M.—Emporium Junction daily for Erie, Ridgway and intermediate stations.

RIDGWAY AND CLEARFIELD R. R. CONNECTIONS.

Table with columns for stations (Ridgway, etc.) and times (A.M., P.M.).

Table with columns for stations (Ridgway, etc.) and times (A.M., P.M.).

Table with columns for stations (Ridgway, etc.) and times (A.M., P.M.).

Table with columns for stations (Ridgway, etc.) and times (A.M., P.M.).

Table with columns for stations (Ridgway, etc.) and times (A.M., P.M.).

Table with columns for stations (Ridgway, etc.) and times (A.M., P.M.).

Table with columns for stations (Ridgway, etc.) and times (A.M., P.M.).

Table with columns for stations (Ridgway, etc.) and times (A.M., P.M.).

Table with columns for stations (Ridgway, etc.) and times (A.M., P.M.).

Table with columns for stations (Ridgway, etc.) and times (A.M., P.M.).

Table with columns for stations (Ridgway, etc.) and times (A.M., P.M.).

Table with columns for stations (Ridgway, etc.) and times (A.M., P.M.).

Table with columns for stations (Ridgway, etc.) and times (A.M., P.M.).