

Pennsylvania RAILROAD.

PHILADELPHIA AND ERIE RAILROAD DIVISION.

In effect May 25, 1902. TRAINS LEAVE EMPORIUM EASTWARD

15 M. - Week days for Sunbury, Williamsport, Hazleton, Pottsville, Harrisburg and intermediate stations, arriving at Philadelphia 8:25 P. M.

12:25 P. M. (Emporium Junction) daily for Sunbury, Harrisburg and principal intermediate stations, arriving at Philadelphia, 7:32 P. M.

10:30 P. M. - Daily for Harrisburg and intermediate stations, arriving at Philadelphia, 4:25 A. M.

8:50 P. M. - Daily for Harrisburg and intermediate stations, arriving at Philadelphia, 4:25 A. M.

8:20 A. M. (Emporium Junction) daily for Sunbury, Harrisburg and principal intermediate stations, arriving at Philadelphia, 7:22 A. M.

6:10 A. M. - Emporium Junction - daily for Erie, Ridgway, and week days for Dubois, Clearfield and intermediate stations.

10:30 A. M. - Daily for Erie and week days for Dubois and intermediate stations.

6:23 P. M. - Week days for Kane and intermediate stations.

RIDGWAY AND CLEARFIELD R. R. CONNECTIONS. (Week days.)

WESTWARD. 10:30 A. M. - Emporium Junction - daily for Erie, Ridgway, and week days for Dubois, Clearfield and intermediate stations.

10:30 A. M. - Daily for Erie and week days for Dubois and intermediate stations.

6:23 P. M. - Week days for Kane and intermediate stations.

RIDGWAY AND CLEARFIELD R. R. CONNECTIONS. (Week days.)

WESTWARD. 10:30 A. M. - Emporium Junction - daily for Erie, Ridgway, and week days for Dubois, Clearfield and intermediate stations.

10:30 A. M. - Daily for Erie and week days for Dubois and intermediate stations.

6:23 P. M. - Week days for Kane and intermediate stations.

RIDGWAY AND CLEARFIELD R. R. CONNECTIONS. (Week days.)

WESTWARD. 10:30 A. M. - Emporium Junction - daily for Erie, Ridgway, and week days for Dubois, Clearfield and intermediate stations.

10:30 A. M. - Daily for Erie and week days for Dubois and intermediate stations.

6:23 P. M. - Week days for Kane and intermediate stations.

RIDGWAY AND CLEARFIELD R. R. CONNECTIONS. (Week days.)

WESTWARD. 10:30 A. M. - Emporium Junction - daily for Erie, Ridgway, and week days for Dubois, Clearfield and intermediate stations.

10:30 A. M. - Daily for Erie and week days for Dubois and intermediate stations.

6:23 P. M. - Week days for Kane and intermediate stations.

RIDGWAY AND CLEARFIELD R. R. CONNECTIONS. (Week days.)

WESTWARD. 10:30 A. M. - Emporium Junction - daily for Erie, Ridgway, and week days for Dubois, Clearfield and intermediate stations.

10:30 A. M. - Daily for Erie and week days for Dubois and intermediate stations.

6:23 P. M. - Week days for Kane and intermediate stations.

RIDGWAY AND CLEARFIELD R. R. CONNECTIONS. (Week days.)

WESTWARD. 10:30 A. M. - Emporium Junction - daily for Erie, Ridgway, and week days for Dubois, Clearfield and intermediate stations.

10:30 A. M. - Daily for Erie and week days for Dubois and intermediate stations.

6:23 P. M. - Week days for Kane and intermediate stations.

RIDGWAY AND CLEARFIELD R. R. CONNECTIONS. (Week days.)

WESTWARD. 10:30 A. M. - Emporium Junction - daily for Erie, Ridgway, and week days for Dubois, Clearfield and intermediate stations.

10:30 A. M. - Daily for Erie and week days for Dubois and intermediate stations.

carry passengers. Trains 8 and 10 A. M. Trains run on Eastern Standard Time.

BUFFALO & SUSQUEHANNA R. R. Time Table taking effect June 23, 1902.



"The Grand Scenic Route."

Table with columns for stations (Lv. K'ing Smt., Austin, Costello, etc.) and times for different train services.

Table with columns for stations (Lv. K'ing Smt., Austin, Costello, etc.) and times for different train services.

Table with columns for stations (Lv. K'ing Smt., Austin, Costello, etc.) and times for different train services.

Table with columns for stations (Lv. K'ing Smt., Austin, Costello, etc.) and times for different train services.

Table with columns for stations (Lv. K'ing Smt., Austin, Costello, etc.) and times for different train services.

Table with columns for stations (Lv. K'ing Smt., Austin, Costello, etc.) and times for different train services.

Table with columns for stations (Lv. K'ing Smt., Austin, Costello, etc.) and times for different train services.

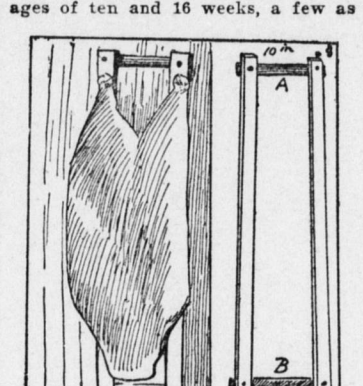
Table with columns for stations (Lv. K'ing Smt., Austin, Costello, etc.) and times for different train services.



HOW TO SHIP LAMBS.

It Pays Well to Prepare the Carcasses with Neatness, Each Placed on a Stretcher.

Winter lambs for market should weigh not less than 45 pounds alive, and be fat.



DRESSED LAMB AND STRETCHER.

young as eight weeks. The market for them extends from Christmas to Easter, according to the Ohio Farmer correspondent, who further says:

To prepare a dressed lamb for shipment send about each lamb a square yard of clean, new muslin, as shown in the cut.

The diagram is a slight modification in form from the stretcher shown with a lamb on it.

When the Bees Have Plenty of Space, Swarming is Usually Reduced to a Minimum.

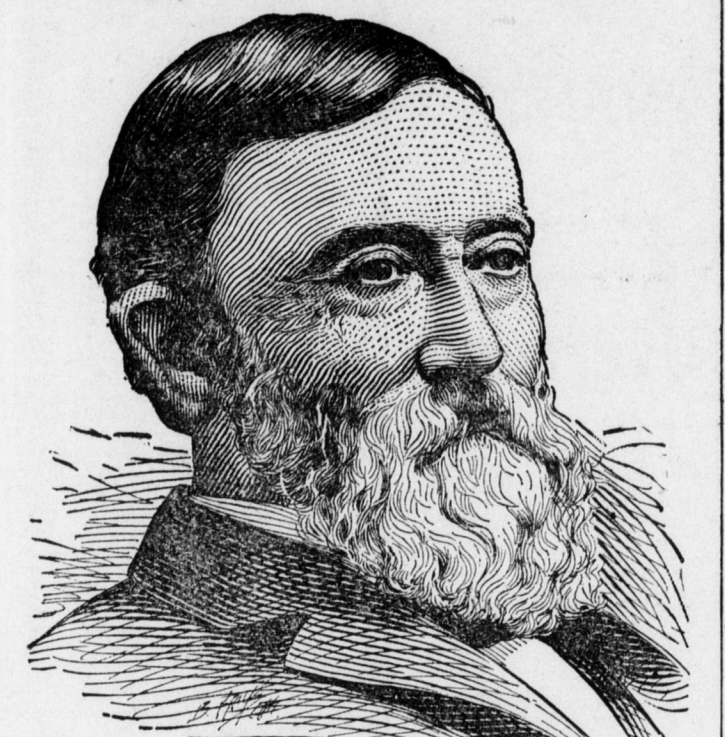
Australia has about 87,000 sheep. In the United States 40,000 locomotives haul 1,500,000 cars.

Beer production in Austria declined last year by 482,111 barrels.

More than 150 books on the war in South Africa have been published.

DAN GROSVENOR SAYS:

"Pe-ru-na is an Excellent Spring Catarrh Remedy--I am as Well as Ever."



HON. DAN A. GROSVENOR, OF THE FAMOUS OHIO FAMILY.

Hon. Dan A. Grosvenor, Deputy Auditor for the War Department, in a letter written from Washington, D. C., says:

"Allow me to express my gratitude to you for the benefit derived from one bottle of Peruna. One week has brought wonderful changes and I am now as well as ever."

DA N. A. GROSVENOR.

In a recent letter he says: "I consider Peruna really more meritorious than I did when I wrote you last. I receive numerous letters from acquaintances all over the country asking me if my certificate is genuine."

A County Commissioner's Letter. Hon. John Williams, County Commissioner of St. Louis, Minn., says the following in regard to Peruna:

"As a remedy for catarrh I can cheerfully recommend Peruna. I know what it is to suffer from that terrible disease and I feel that it is my duty to speak a good word for the tonic that brought me immediate relief."

A Congressman's Letter. Hon. H. W. Ogden, Congressman from Louisiana, in a letter written at Washington, D. C., says the following of Peruna, the national catarrh remedy:

Keeping the Average. Miss Jones--Did you shoot anything, Mr. Bates? Mr. Bates (hesitatingly)--Yes--er--er--a brace of ducks. "Wald?" "Er--er--no, but the farmer was."--Stray Stories.

The old gentleman steadily regarded him. "Well," he said, "it is evident that my daughter did not pick you out for your personal attractions. Hence I must conclude that you have some practical points that are of value. Take her, my boy, she's yours."--Cleveland Plain Dealer.

Never draw a sight draft on a blind man. Chicago Daily News. Even the forger appreciates a good name. Chicago Daily News.

Self-respect is the corner stone of all virtue. Sir John Herschel. Too many quarrels are picked before they are ripe. Chicago Daily News.

It takes the office boy to set the versifier's verse afloat. Chicago Daily News. No man is so strong that he does not have some weakness. Chicago Journal.

The attempt to be a good fellow has spoiled many a good man. Ram's Horn. We seldom repent talking too little, but very often talking too much. La Bruyere.

Uncertain--Judge Wayback--"Have you any prejudice against the defendants?" Hank Howler--"I dunno yit, judge. Wot's his politics?"--N. Y. Weekly.

Sensitive--Barber--"Have an egg shampoo, sir?" Victim--"Wow! I should say not!" Barber--"Beg pardon, sir. I didn't know you were an actor."--Chicago Daily News.

Timely Advice--Mrs. Tellem Wright--"Have you any more butter like you sold me this morning?" Dealer--"Sure." Mrs. Tellem Wright--"Then you'd better hide it right quick, here comes a member of the board of health up the street."--Baltimore World.

Profitable Surgery. "It is a serious case," declares the great surgeon, who has been called to the bedside of the ptoicotic sufferer. "What is your diagnosis, doctor?" asks the man of money. "You are threatened with billionoussness," says the surgeon.

The case requiring immediate action, he proceeds to cut the patient loose from about half his face. Judge.

LOW GRADE DIVISION.

EASTBOUND. STATIONS. 109 113 101 105 107 901

Table with columns for stations (Pittsburg, Lv., Red Bank, etc.) and times for different train services.

Table with columns for stations (Pittsburg, Lv., Red Bank, etc.) and times for different train services.

Table with columns for stations (Pittsburg, Lv., Red Bank, etc.) and times for different train services.

Table with columns for stations (Pittsburg, Lv., Red Bank, etc.) and times for different train services.

Table with columns for stations (Pittsburg, Lv., Red Bank, etc.) and times for different train services.

Table with columns for stations (Pittsburg, Lv., Red Bank, etc.) and times for different train services.

Table with columns for stations (Pittsburg, Lv., Red Bank, etc.) and times for different train services.

Table with columns for stations (Pittsburg, Lv., Red Bank, etc.) and times for different train services.

Table with columns for stations (Pittsburg, Lv., Red Bank, etc.) and times for different train services.

Table with columns for stations (Pittsburg, Lv., Red Bank, etc.) and times for different train services.

Table with columns for stations (Pittsburg, Lv., Red Bank, etc.) and times for different train services.

Table with columns for stations (Pittsburg, Lv., Red Bank, etc.) and times for different train services.

Table with columns for stations (Pittsburg, Lv., Red Bank, etc.) and times for different train services.

Table with columns for stations (Pittsburg, Lv., Red Bank, etc.) and times for different train services.

Table with columns for stations (Pittsburg, Lv., Red Bank, etc.) and times for different train services.

Table with columns for stations (Pittsburg, Lv., Red Bank, etc.) and times for different train services.

Table with columns for stations (Pittsburg, Lv., Red Bank, etc.) and times for different train services.

Advertisement for W.L. Douglas shoes, featuring a portrait of the man and text about quality and price.

Advertisement for Weatherwise Slickers, featuring a fisherman and text about waterproof clothing.

Advertisement for Potatoes, \$2.50, featuring a picture of a potato and text about quality.

Advertisement for Cascarets, featuring a picture of the product and text about its benefits for the bowels.

Advertisement for Piles, featuring text about medical treatment for hemorrhoids.

Large advertisement for Peruna medicine, including a testimonial from Dan A. Grosvenor and a small portrait of a man.

Advertisement for the Illinois Central Railroad, featuring a map and text about routes and services.

Advertisement for Fine Service to Minneapolis and St. Paul, featuring a map and text about travel services.

Advertisement for Home Seekers, featuring text about real estate agents and property listings.

Advertisement for Western Canada, featuring text about land opportunities and services.

Advertisement for Potatoes, \$2.50, featuring a picture of a potato and text about quality.

Advertisement for Piles, featuring text about medical treatment for hemorrhoids.

Advertisement for PISO'S CURE FOR CONSUMPTION, featuring text about a cure for tuberculosis.