

HOW TO BUY AND WEAR SHOES.

The Sole Should Never Be Narrower Than the Foot.

Of great importance in the toilet of the woman of fashion are the shoes she wears. One thing that fashion has decreed, with the approval of every woman of inherent good taste, is that it is positively bad form to walk the streets with high French heels, says the Boston Post.

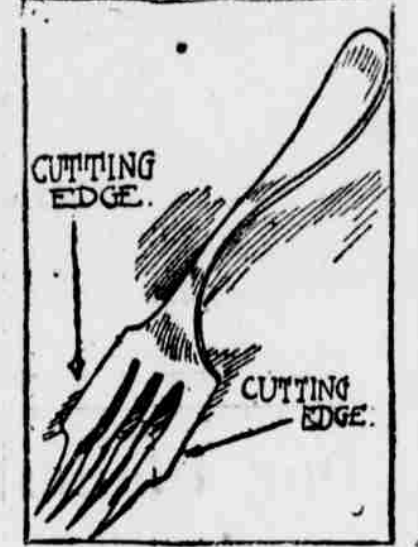
For all out-of-door wear the Cuban heel is the correct thing. Nine women out of ten buy their shoes too small. The reason for this is the foot is considerably smaller when she sits down than when she walks about.

Exercise brings a larger quantity of blood into the feet and they swell appreciably. The muscles also require certain space for exercising. In buying shoes women would find less difficulty if they would stand up to fit them on, instead of sitting down. Sitting in a chair when fitting a shoe, the shoe feels comfortable; then when you walk you wonder what is the matter with the shoe, it cramps your foot.

A shoe should never be worn with a sole narrower than the outline of the foot (traced with a pencil close under the rounding edge). Do not wear a shoe that will not allow the great toe to lie in a straight line, or one that pinches in the heel. Never wear a shoe with the sole turning up at the toes; this causes the coria on the upper part of the foot to contract; or one that has depression in any part of the sole to drop any joint, or bearing below the level plane.

Knife and Fork in One Piece.

When eating pie or cake, it may taste better when held in the fingers, but modern etiquette says that such practices belong to savages only, and that the proper method is to employ a fork. The ordinary fork generally fulfills its mission when used in connection with home-made cakes and pies, but when the hungry man has to contend with the modern restaurant variety at his noon-day lunch, a sharper implement is needed to cut the so-called crusts. Proprietors of restaurants should provide each customer purchasing a piece of pie with the combination knife and fork shown in the accompanying illustration.



Cuts Crusts Easily. This fork is provided with two miniature knives, placed on the outer prongs. The user thus has at his command a knife for severing any tough crusts he should encounter, and also the usual prongs for raising the severed piece. Such ideas as this are born of a genius.

GUIDES TO HEALTH.

Strengthen the ankles by rising on the balls of the feet as high as possible and descending slowly. Do this night and morning. Rise from forty to fifty times.

Skin blemishes on the face may come from within or without. Keep the system from being clogged and the pores of the face will be in a healthy condition. Use salt and water bath three or four times a week.

That "tired feeling" may be combated by proper exercise, wholesome food, pure air, pure thoughts. Learn to economize your vitality. Snatch a few moments here and there for rest, either by full relaxation or change of occupation.

It is really necessary to everyone to use a pleasant mouth wash several times a day. A few drops are all that is needed in a glassful of water. The wash will not take the place of tooth-powder. It is also an excellent plan to consult a dentist twice a year and have the tartar removed from the teeth.

For an Evening Scarf.

New evening silks are very sheer and fine. The stiff, heavy sorts have little showing. These gossamer veils are printed with colored flowers, the design in many of them outlined in gold thread, making them almost gorgeous, yet delicately lovely.

One of the new chiffons seems especially designed for lovely evening scarfs. It has a border of satin stripes, and above that a wide stripe design in beautiful soft colorings. The width is just right for a scarf, and one needs to buy only a yard and a half, or two yards at most.

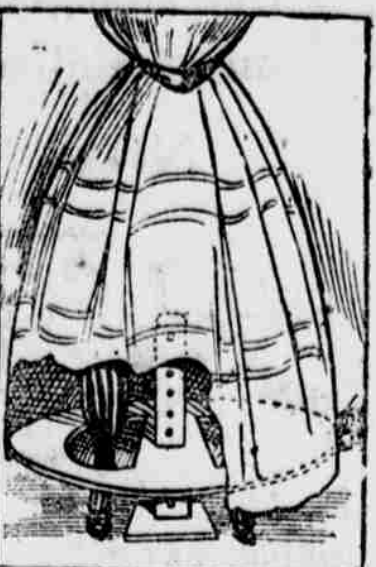
Home-Made Candies.

"Vassar Fudge" has two cups of brown sugar, a cup of thick cream and a scant tablespoonful of butter; when quite hot add a quarter of a cake of chocolate shaved thin and stir over the fire until a little thick in a saucer and beaten will cream. Beat until cold and turn out on buttered tins.

AID TO THE DRESSMAKER.

Device Which Simplifies the Measuring of Skirts.

An enterprising dressmaker of New York has designed a garment-fitting device that should prove valuable to others in the same profession. Dressmakers claim that when fitting a lady's skirt it is very difficult to correctly mark the correct length, as a slight shifting of the body will cause the dressmaker to mark incorrectly. Another disadvantage is the want of a foundation which will spread out the bottom of the skirt evenly at the proper distance. This is provided for in the device shown here. It consists of a circular disc,



Length Easily Marked.

the outer edges of which coincide with the flare of the skirt. Two openings are made in the base, one on each side of the center, to receive the feet of the wearer. In the center of the disc is a support containing numerous openings. By inserting a peg in an opening the disc can be supported any distance desired above the floor. After adjusting the disc the dressmaker is in position to mark on the unfinished garment the exact length it is to be. Without such a base the skirt would naturally fall in toward the body.

FASHION'S DICTATES.

That hand embroidery is a main in Paris.

That antelope grey, with a brownish cast, is the latest approved shade in swifdom.

That brocades embroidered over the design with silk are the choicest fabric for bodice coats with tails and net skirt.

That many Louis XVI. jackets are made of wide, fancy ribbons, which is effective and less expensive than brocade.

That stripes are more in favor in chiffon, mousseline, chiffon cloth and other diaphanous fabrics than in materials of heavier weight.

That the Mandarin sleeve, cut in one with the waist or coat and overhanging a loose inner sleeve, is seen on the latest Paris models.

That the smart jacket suit should have a bodice in the same shade of chiffon or crepe de chene and be trimmed to match the jacket vest or collar.

That edges are to have a finish of chenille or fringe.

That the fashionable sleeve for the tailor-made is three-quarter length, though never quite to the wrist.

One Way for Women to Earn Money.

One of the least expensive and easiest ways of earning a living for a woman to adopt is that of dyeing. In small towns where people have no city facilities it is a paying investment to start a dyeing establishment says the Chicago News.

It's wonderful how many old gowns, coats, odds and ends, and even carpet rags every housekeeper has that she wishes dyed. One of the principal advantages of this sort of work is the small investment that is required to be made. Several ten cent packages of dye of staple colors are all she needs to start with.

After one gets accustomed to the work it is fascinating as well as profitable.

Settling Dust After Sweeping.

To clear quickly the atmosphere of a room from dust, especially a carpeted room, after sweeping, this simple experiment suffices. Take a piece of sheeting or large towel, dip it in water and wring dry as possible, then swing the dampened cloth back and forth through the room in order to catch all the floating particles of dust. This it will do readily. Thus, within five minutes the atmosphere may be made purer and sweeter than it could be by the usual process of "dust settling" in many hours.

Preservative for Eggs.

A simple solution of salt and lime is a good preservative for eggs. Put into a stone jar a lump of lime weighing about two pounds. Pour on this one quart of water and stir until lime is broken up; add one gallon of water and one pint of salt. Place the eggs in this jar and keep them well covered with the solution.

Beauty Hints.

Old age is not only disfiguring, but it is out of style. Excessive dandruff on the scalp will cause falling of the hair.

Remember that beautiful hair is the product of extraordinary care.

Naturally thick lips can not be reduced, biting them will only prove harmful.

Do You Think For Yourself?

Or, do you open your mouth like a young bird and gulp down whatever food or medicine may be offered you?

There is an intelligent thinking woman, in need of relief from weakness, nervousness, pain and suffering, then it means much to you that there is one tried and true human medicine of simple composition, sold by druggists for the cure of woman's ills.

The makers of Dr. Pierce's Favorite Prescription, for the cure of weak, nervous, run-down, over-worked, debilitated, pain-racked women, knowing this medicine to be made up of ingredients, every one of which has the strongest possible endorsement of the leading and standard authorities of the several schools of practice, are perfectly willing, and in fact, are only too glad to print, as they do, the formula, or list of ingredients, of which it is composed, in plain English, on every bottle-wrapper.

The formula of Dr. Pierce's Favorite Prescription will bear the most critical examination of medical experts, for it contains no alcohol, narcotics, harmful, or habit-forming drugs, and no agent enters into it that is not highly recommended by the most advanced, and leading medical teachers and authorities of their several schools of practice. These authorities recommend the ingredients of Dr. Pierce's Favorite Prescription for the cure of exactly the same ailments for which this world-famed medicine is advised.

No other medicine for woman's ills has any such professional endorsement as Dr. Pierce's Favorite Prescription has received, in the unqualified recommendation of each of its several ingredients by scores of leading medical men of all the schools of practice. Is such an endorsement not worthy of your consideration?

A booklet of ingredients, with numerous authoritative professional endorsements by the leading medical authorities of this country, will be mailed free to any one sending name and address with request for same. Address Dr. R. V. Pierce, Buffalo, N. Y.

EYELET WORK THE CRAZE.

The Skillful Needlewoman, Chance to Improve Her Wardrobe.

Eyelet embroidery, broderie Anglaise, is the prime favorite in the embroidery line this season and so complete is its vogue that dresses, coats, hats, parasols, shirt waists and accessories, such as collars, cuffs, chemisettes and belts, will show it.



Lingerie Hat.

decorative touch, if they are not entirely fashioned from it.

The lingerie hat made its appearance last summer and was accorded a cordial welcome. With eyelet embroidery as the material from which it is evolved, even a greater degree of favor may be predicted for the summer of 1905. Lingerie belts are new and offer a good field for the display of skill in eyelet embroidery, as do collar and cuff sets, particularly as



Collar and Cuff Set.

the latter are in demand all the year round. The durability, no less than the effectiveness, of this style of embroidery is an important factor with regard to its popularity, and it is likely to remain at the top of the fashionable list for some time to come.

Marie Antoinette's Parasol.

A parasol used by Queen Marie Antoinette has recently been sent to a London house to be brought up to date. The stick, which, after the fashion of those primitive sunshades, doubles up, is of ivory, but almost covered with beautifully chased gold, studded with turquoises, pearls and diamonds. The handle, where it joins the stick, represents a tiny gold kennel with a microscopic dog at the far end, and on the top, above the silk, is a carved gold ball surmounted by a fleur-de-lis in classical dress, ball and figure not more than an inch high. The parasol was covered with goblin blue silk, lined with pink, edged with a frayed-out pinked ruche and a bow outside.

The Intellectual Girl.

Whether the sweet girl, the cheerful girl or the intellectual girl makes the best wife we cannot say. Better ask some man about that. However, it is safe to make the guess that the girl who possesses all three of these valuable qualities—sweetness, cheerfulness and intellect—is the best girl of all. Such paragons exist, of course. Unless a girl is cheerful she is a depressing comrade; if she is not sweet she is not womanly; if she hasn't intelligence she will soon prove tiresome.—Chicago Record-Herald.

Pacific Coast's Veiled Threat.

Rebellion Hinted at by San Francisco Paper—Cannot Accept President's Attitude.

The San Francisco Chronicle, owned by M. H. de Young, a Republican of national prominence, printed a remarkable article the other day headed "National Liberty," in which a warning is virtually given that if President Roosevelt's attitude with regard to the Japanese question were endorsed by Congress, California would become rebellious. The Chronicle says publicly what a good many persons on the coast have been saying privately ever since the President's message was issued.

The editorial begins by declaring that "All emotions are fleeting, even loyalty, which may become the most powerful emotion of all."

"After an analysis of the causes of national patriotism, it says: "National loyalty is closely akin to family loyalty. The child clings to its parents for the protection which they give. When oppression takes the place of protection the spirit takes flight; when the Constitution comes to be regarded as an instrument which commits power to the more populous section of the country to coerce a less populous section in respect to matters reserved for local control the years of the republic will be full of trouble, and will probably be few.

"A very large measure of local autonomy is essential to the contentment of the people of so vast a country as ours: And a discontented people becomes in the end a rebellious people.

"The attitude of President Roosevelt in respect to the control of the common schools of California would tend to make the western half of the continent hate the federal government were it not for the firm conviction that his policy is only personal, and certain of emphatic repudiation by Congress, his party and an overwhelming majority of the American people."

Dr. Humphreys' "Seventy-Seven."

"Seventy-seven" cures Grip, Influenza, Catarrh, Coughs, Colds and Sore Throat.

Taken during its prevalence, it preoccupies the system and repels the invasion.

Taken while suffering, quick relief is assured.

Colds that are obstinate and "hang on" and do not yield to treatment find relief from "77."

At Druggists, 25 cents or mailed. Humphreys' Homeo. Medicine Co. Cor. William and John Streets, New York.

SHERIFF'S SALE.

By virtue of sundry writs of F. Pa. issued out of the Court of Common Pleas of Columbia county, Pa., and to me directed, there will be sold at public sale at the court house, Bloomsburg, county and state aforesaid, on

SATURDAY, FEB. 2nd, 1907.

at 9 o'clock p. m., the following described real estate: TRACT NO. 1. A VALUABLE TRACT OF TIMBER. All that certain message, tenement and tract of land situate in the township of Jackson, county of Columbia, state of Pennsylvania, bounded and described as follows, viz: Beginning at a white pine, thence by and of T. Viets and E. Meeker and others, about 65 degrees 30 minutes east 142 rods to a stone, thence by land of Wilson Kitchen south 22 degrees west 43 rods to a maple stump, thence by land of same south 70 degrees 30 minutes east 100 rods to a hemlock, thence by land formerly of J. H. Creveling south 9 degrees 30 minutes west 40 rods to a hemlock thence by same and land of J. Wilson Kite north 70 degrees 30 minutes west 161 4-10 rods to a stone, thence by land of Jackson Township School District north 39 degrees 45 minutes east 8 5-10 rods to a post, thence by same north 41 degrees 30 minutes east 13 rods to a post, thence by land of same north 18 degrees, 30 minutes west 22 2-10 rods, thence by same south 41 degrees 30 minutes west 5 rods to a post, thence by land of William Hess south 80 degrees 30 minutes west 22 rods and same in the public road, thence along same and in same north 44 degrees 15 minutes west 9 rods, thence along same and in same north 72 degrees west 11 rods, thence along land of Geo. Wagner and in public road north 7 degrees west 12 2-10 rods, thence along same and in same north 31 degrees west 10 rods, thence along same and in same north 72 degrees 30 minutes west 19 rods, thence along same and in same north 54 degrees 30 minutes west 5 7-10 rods, thence along land of Michael S. Hemley and T. Viets north 19 degrees west 112 rods to place of beginning, containing

162 ACRES and 100 PERCHES

neat measure. It being a part of the tracts of land in the warrant names of Prilla McHenry and Edward McHenry, upon which is erected a two-story

FRAME DWELLING HOUSE

bar and sawmill with good water power. This property is well timbered except a few acres of farm land around the buildings.

TRACT NO. 2.—All that certain message, tenement and lot of land situate in the village of Holsburg, Greenwood township, Columbia county, Penna. bounded and described as follows, to wit:

Bounded on the north by public road leading to Millville, on the east by land of Mrs. Vaughn, on the south by land of Jacob Rantz estate, and on the west by land of Hite, being fifty-nine feet in front on Millville road and ninety-nine feet in depth, whereon are erected a stable and shed.

Seized and taken into execution at the suits of Howard Staddon, Della Staddon and I. M. Betz vs. P. D. Black, and to be sold as the property of P. D. Black.

CHAS. B. ENT, Sheriff, Andrew L. Fritz, Grant Herring, AUCTIONEERS.

JURORS FOR FEBRUARY TERM.

GRAND JURORS.

George C. Fenstermecher, moulder George M. Vance, farmer, Mt. Pleasant. Samuel Alstetter, farmer, Main. Peter Edinger, laborer, Main. Fred Carl, farmer, Catawissa Boro. Martin B. Rhawn, laborer, Bloom. William McHenry, farmer, Stillwater. Charles Harder, painter, Catawissa Boro.

Freeman Harman, carpenter, Berwick. P. W. Miller, laborer, Catawissa Boro. Wellington Crossley, farmer, Hemlock. Evan H. Kreamer, farmer, Madison. Swayze Black, laborer, Greenwood. George Kline, laborer, Bloom. B. F. Bodine, merchant, Locust. Steward M. Girton, farmer, Hemlock. Wesley Shaffer, farmer, Briarcreek. W. E. Koehler, laborer, Sugarloaf. H. H. Martz, piper, Berwick. Norman Mausteller, farmer, Fishing-creek.

Thomas Quigley, laborer, Centralia. Philip A. Straub, farmer, Hemlock. Clark Bower, foreman, Berwick. William A. Burrows, laborer, Bloom. TRAVERSE JURORS—1ST WEEK.

Eugene Doty, Berwick. Lloyd Fry, Montour. Cyrus Hartline, Madison. Marvin Conner, Benton Borough. Edward C. Kahler, Bloom. Elmer Reese, Montour. John Ross, Madison. C. C. Fowler, Berwick. Elisha Dreisbach, Bloom. F. P. Fisher, Cleveland. Daniel Kistler, Catawissa Boro. B. B. Frans, Bloom. Rush Frans, Briarcreek. David Brooks, Bloom. Gedaliah Yeom, Cleveland. H. B. Cressy, Catawissa twp. Pugh V. Glessner, Orange twp. A. W. Dresher, Benton twp. James Miller, Scott. H. R. Dieterick, Orange. D. C. Yeager, Locust. Bowman Mordan, Madison. D. H. Hullenstine, Millin. Warren Hess, Stillwater. Harry W. Dolly, Montour. William Parks, Franklin. L. B. Stiles, Benton borough. Clinton Helwig, Catawissa twp. C. F. Sweppenheiser, Main. C. M. Sweppenheiser, Center. Charles E. Hutton, Berwick. Eli Ikeler, Mt. Pleasant. I. Rabb, Bloom. U. A. Smith, Main. A. C. Hillay, Bloom. Harvey Fairchilds, Briarcreek. John Adams, Bloom. James Smothers, Berwick. Michael J. Flynn, Centralia. Silas Yorks, Sugarloaf. Spangler Haus, Mt. Pleasant. J. R. Richie, Jackson. George Keleher, Scott. Peter J. McDonald, Conyngham. John C. Walters, Locust. J. O. Ikeler, Orange. Amos Crawford, Mt. Pleasant.

TRAVERSE JURORS, SECOND WEEK.

Clark Shannon, Benton twp. O. E. Gilbert, Mt. Pleasant. J. H. Catterall, Berwick. Isaac Richard, Scott. E. E. Yohe, Bloom. A. B. Hagen, Locust. A. C. Hitenbueh, Center. Rutter Hagenbueh, Berwick. H. H. Kindt, Mt. Pleasant. John J. Ryan, Centralia. B. F. Hicks, Bloom. Harry C. Dieterick, Scott. C. L. Davis, Benton Boro. G. B. Appleman, Greenwood. George Thomas, Montour. Theodore Fox, Main. Samuel Feigley, Catawissa Boro. Arthur Cole, Greenwood. William C. Eves, Millville. E. J. Brown, Bloom. Joseph W. Hilday, Bloom. D. K. Bogart, Millin. C. M. Kennedy, Sugarloaf. William Merrill, Scott. Francis W. Bower, Berwick. John W. Grey, Bloom. J. D. Williams, Roaringcreek. Wilson Rhodes, Roaringcreek. James Kostenbauder, Conyngham. E. R. Wilson, Benton Twp. Miles Longenberger, Beaver. C. R. Harder, Catawissa Boro. John W. Cressy, Millin. B. W. Lemon, Benton Twp. David P. Smith, Briarcreek. W. O. Holmes, Bloom.

EXECUTRIX NOTICE.

Estate of George P. Watson, late of Madison Township, deceased. Notice is hereby given that letters testamentary on the estate of George P. Watson, late of the township of Madison, county of Columbia, Pa., deceased, have been granted to Hattie V. Watson, to whom all persons indebted to said estate are requested to make payment, and those having claims or demands will make known the same without delay to

HARRMAN, ATTY. HATTIE V. WATSON, Executrix. 18-13-07

ADMINISTRATORS' NOTICE

Estate of James Monaghan, late of the township of Conyngham, Co. Pa., deceased. Notice is hereby given that letters of administration on the estate of James Monaghan, late of Conyngham township, deceased, have been granted to the undersigned administrator to whom all persons indebted to said estate are requested to make payments, and those having claims or demands will make known the same without delay to

M. J. MONAGHAN, Administrator. Or to A. Fred B. Garner, Esq., Administrator, Ashland, Pa. 18-17-07.

AUDITOR'S NOTICE.

Estate of Wm. Gingles, Deceased. The undersigned, an auditor appointed to make distribution of the balance in the hands of Frank Ikeler Esq., and Harvey Gingles, executors of the last will and testament of William Gingles, late of the Town of Bloomsburg, Pennsylvania, deceased, as shown by their second account will sit to perform the duties of his appointment at the law office of Hon. Fred T. Ikeler, in the said Town of Bloomsburg, aforesaid on Friday the 11th day of January 1907, at 10 o'clock a. m. and where all parties interested may appear, present their claims or be forever debarred from claiming anything out of said estate. CHRISTIAN A. SMALL, Auditor. 18-17-07

AUDITOR'S NOTICE.

Estate of Jacob Moyer, Deceased. The undersigned appointed an Auditor by the Orphans' Court of Columbia county to pass up on exceptions to the account of T. J. Vandell, trustee, will sit at his office in First National Bank Building, Bloomsburg, Pa., on Friday, February 1st, 1907, at 10 o'clock a. m. to perform the duties of his appointment at which time all persons interested will appear and be heard. FRANK IKELER, Auditor. 1-10-07.

ELECTION NOTICE.

The Annual Meeting of the members of the Columbia County Agricultural, Horticultural and Mechanical Association will be held in the Court House in Bloomsburg on Saturday, January 19th, 1907, at two o'clock p. m. for the election of officers for the ensuing year. A. S. GUST, Secretary.

Professional Cards

H. A. McKILLIP. ATTORNEY-AT-LAW. Columbia Building 2d Floor Bloomsburg, Pa.

A. N. YOST, ATTORNEY AT LAW. Ent Building, Court House Square Bloomsburg, Pa.

RALPH R. JOHN, ATTORNEY AT LAW. Hartman Building, Market Square Bloomsburg, Pa.

FRED IKELER, ATTORNEY-AT-LAW. Office Over First National Bank Bloomsburg, Pa.

CLYDE CHAS. YETTER, ATTORNEY-AT-LAW. Office in Wirt's Building. Bloomsburg, Pa.

W. H. RHAWN, ATTORNEY-AT-LAW. Office Corner of 3rd and Main St. CATAWISSA, PA.

CLINTON HERRING, ATTORNEY-AT-LAW. Office with Grant Herring, Bloomsburg, Pa. I - Crangeville Wednesday each week

A. L. FRITZ, ATTORNEY-AT-LAW. Office—Bloomsburg Nat'l Bank Bldg. Bloomsburg, Pa.

J. H. MAIZE, ATTORNEY AT LAW, INSURANCE AND REAL ESTATE AGENT. Office in Townsend's Building Bloomsburg, Pa.

N. U. FUNK, ATTORNEY AT LAW. Ent's Building, Court House Square Bloomsburg, Pa.

SADE T. VANNATTA (Successor to C. E. K.) and GENERAL INSURANCE. Office 238 Iron St., Bloomsburg, Pa. Oct. 31, 1901. 11

M. F. LUTZ & SON, INSURANCE and REAL ESTATE AGENTS and BROKERS. N. W. Corner Main and Centre Sts. BLOOMSBURG, PA. Represent Seventeen as good Companies as there are in the World and all losses promptly adjusted and paid at their office.

DR. W. H. HOUSE, SURGEON DENTIST. Office Barton's Building, Main below Market Bloomsburg, Pa. All styles of work done in a superior manner. All work warranted as represented. TEETH EXTRACTED WITHOUT PAIN by the use of Gas, and free of charge when artificial teeth are inserted. Open all hours during the day

DR. M. J. HESS, DENTISTRY IN ALL ITS BRANCHES. Crown and bridge work a specialty. Corner Main and Centre streets Bloomsburg, Pa. Columbia & Montour Telephone connection

J. J. BROWN, M. D. THE EYE A SPECIALTY. Eyes tested and fitted with glasses. No Sunday work. 311 Market St., Bloomsburg, Pa. Hours 10 to 8 Telephone

J. S. JOHN M. D. PHYSICIAN AND SURGEON. Office and residence, 410 Main St. 7-30-14 BLOOMSBURG, PA

EDWARD FLYNN, ATTORNEY-AT-LAW, CENTRALIA, PA. Office Liddick building, Locust avenue

H. MONTGOMERY SMITH, ATTORNEY-AT-LAW, Office 1—Ent building, 11-16-99

WILLIAM C. JOHNSTON, ATTORNEY-AT-LAW. Office in Wells' building over J. G. Wells' Hardware Store, Bloomsburg, Will be in Millville on Tuesdays.

EXCHANGE HOTEL. I. A. SNYDER, Proprietor. BLOOMSBURG, PA. Large and convenient sample rooms, bath rooms hot and cold water and all modern conveniences

CITY HOTEL. W. A. Hartzel, Prop. No. 121 West Main Street Large and convenient sample rooms, bath rooms, hot and cold water, and modern conveniences. Bar stocked with best wines and liquors. First-class livery attached.

HOMOEOPATHIC PHYSICIAN AND SURGEON. Office & Residence, 4th St. Queen, G. N. Y. 100,000 8,558 015 1-1 Westchester, N. Y. 300,000 1,728 071 18 N. America, Phila. 3,995,000 9,350,074 8-35

C. WATSON McKELVY, FIRE INSURANCE AGENT. Represents twelve of the strongest Companies in the world, among which are:

Franklin of Phila. \$400,000 \$5,128,249 \$1.03 Penna. Phila. 400,000 5,255,190 1.41 Queen, G. N. Y. 500,000 8,558 015 1-1 Westchester, N. Y. 300,000 1,728 071 18 N. America, Phila. 3,995,000 9,350,074 8-35