

Take a Day Off.

If you haven't done it yet, take part of a day, or even a few hours off from work, and get out into the country at this most beautiful of all seasons.

Drop everything and go at once and you will never regret it. Get into the woods and hills and then say if any man's handiwork can compare with the gifts of nature.

DEAL IN BUFFALOES.

Largest Herd in the World, Consisting of 75 Animals, Has Just Changed Owners.

The largest herd of buffaloes in the world has just changed hands. There are 75 of the animals in the bunch, the nucleus of which was the five small buffalo calves in 1882, when they were caught on the great plains and placed in captivity.



"OLD MONARCH." (Head of the Largest Herd of Buffaloes Now in Existence.)

room at will over the 1,000-acre tract upon which they are confined, and consequently have lost none of their shyness where man is concerned.

James W. Phillips, a wealthy ranchman, has purchased the entire herd and has removed them to his ranch in South Dakota. He has enclosed an immense tract of fine grazing land with a fence 12 feet high and very strong.

Catching Bass Out of Season.

The Bass season does not open until the fifteenth day of June, nevertheless one already hears stories of illegal fishing in which large quantities of black bass are taken from the river.

The spawning season is barely over and to take bass in a wholesale way at such a time is sure to result in a diminution of the splendid game fish, which will be felt later on.

A favorite device among the illegal fishermen just at present is to catch a live minnow and to suspend it in the water over the spawning beds of the black bass, which just now are very jealously guarded by the mother fish.

It is hoped that the illegal fishermen will not lose sight of the penalty provided by the law, which subjects them to a fine of ten dollars for every black bass, wall-eyed pike, Susquehanna salmon, pike, pickerel and sunfish that are caught before the fifteenth day of June.

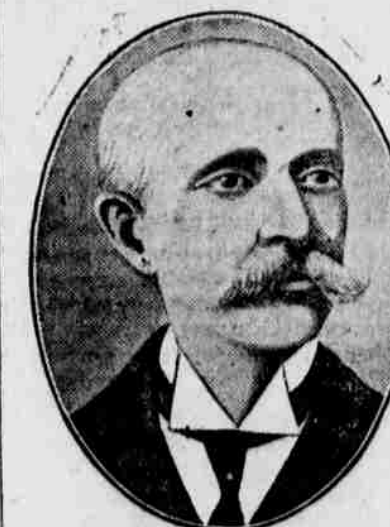
Fire Destroys Famous Hotel.

The famous Minnequa hotel, at Minnequa Springs was destroyed by fire on May 13th. The big hotel, while completely furnished, has not been open to the public for two seasons, though a caretaker was constantly in charge.

DISTINGUISHED MEXICAN.

Signor Jose Yves Limantour Who is at Present Visiting American Money Centers.

Jose Yves Limantour, who is now in the United States in connection, it is said, with monetary matters, is the



JOSE YVES LIMANTOUR. (Mexican Minister of Finance Who is Now in This Country.)

Beware of Ointments for Catarrh that Contain Mercury

as mercury will surely destroy the sense of smell and completely derange the whole system when entering it through the mucous surfaces. Such articles should never be used except on prescriptions from reputable physicians, as the damage they do is tenfold to the good you can possibly derive from them.

Hall's Family Pills are the best.

WASHINGTON.

From our Regular Correspondent. Washington, May 18, 1902.

There is considerable concern manifested among members of the Cabinet and other prominent officials in Washington regarding the extent and the emphasis with which the President, in his western speeches, is dwelling upon the Monroe Doctrine.

It is learned on authority of a member of the Cabinet that the President and Senator Hanna have made a trade whereby the former will welcome as his running mate, provided he secures the nomination, Mr. Myron T. Herrick whom Mr. Hanna is just now booming for Governor of Ohio.

Secretary of State Hay is now thoroughly convinced that there was no foundation for the reports forwarded here last week by Minister Conger at Peking to the effect that the Russians had occupied Niu Chwang in Manchuria.

to attach themselves to the Asiatic squadron.

Representative Swanson of Virginia one of the democratic leaders on the floor of the House, is in Washington and recently expressed some views on the present situation.

The most important development in the Postoffice situation during the past week has been the summary removal of August W. Machen, general superintendent of the division of free delivery, and the appointment as acting superintendent of M. C. Fosnes, who is regarded as the most able postoffice inspector in the service.

Dr. Humphreys.

After fifty years Dr. Humphreys' Specifics enjoy the greatest popularity and largest sale in their history, due to intrinsic merit. They cure the sick.

Table listing various ailments and their corresponding prices for Dr. Humphreys' Specifics. Includes items like Fevers, Worms, Teething, Diarrhea, etc.

RAILROAD TIME TABLE

LACKAWANNA Railroad.

RAILROAD TIME TABLE. LACKAWANNA Railroad. BLOOMSBURG DIVISION. In effect January 26th, 1902. Table with columns for STATIONS, A.M., P.M., and times.

BONE FOOD

Soft and crooked bones mean bad feeding. Call the disease rickets if you want to. The growing child must eat the right food for growth.

Scott's Emulsion is the right treatment for soft bones in children. Little doses every day give the stiffness and shape that healthy bones should have.

Bow legs become straighter, loose joints grow stronger and firmness comes to the soft heads.

Wrong food caused the trouble. Right food will cure it. In thousands of cases Scott's Emulsion has proven to be the right food for soft bones in childhood.

Send for free sample. SCOTT & BOWNE, Chemists, 409-415 Pearl Street, New York.

that the appropriation for rural routes has been exhausted and no further routes will be established until after July 1.

There have been removed from office four officials against whom charges have been preferred, Judge Tyner, Mr. Christianity, Tyner's assistant, Machen and Superintendent Beavers, although the latter was permitted to resign.

The Strenuous Life.

Every day the system needs a certain quantity of nutritious matter to supply the deficiencies of the day before. The building up process must begin at the breakfast table.

Huckleberry Crop Destroyed.

The indications are that there will be a poor huckleberry crop to speak of this year, two severe forest fires having destroyed large sections of the territory upon which the huckleberry bush grows.

WANTED SALESMEN

Liberal inducements. Low Address. THE HAWKS NURSERY CO., Rochester, N. Y.

PENNSYLVANIA Railroad.

Schedule in effect Nov. 16, 1902

PENNSYLVANIA Railroad. Schedule in effect Nov. 16, 1902. Table with columns for STATIONS, A.M., P.M., and times.

Patents

Send model, sketch or photo for free report on patentability. For free book on how to secure TRADE-MARKS write to

GASNOW & Co.

Opposite U. S. Patent Office WASHINGTON D. C.

CHICHESTER'S ENGLISH PENNYROYAL PILLS. Original and Only Genuine. In BIRD and GOLD metallic boxes, sealed in Rubber.

PHILADELPHIA & READING RAILWAY.

In effect November 16, 1902. TRAINS LEAVE BLOOMSBURG. For New York, Philadelphia, Reading, Pottsville, Tamques, weekdays 7:37 11:30 a. m., 3:35 p. m.

TRAINS FOR BLOOMSBURG. Leave New York via Philadelphia 8:00 p. m., and via Easton 9:10 a. m.

Table listing train schedules for Atlantic City, Cape May, and other destinations. Includes columns for station, time, and class.

Beagle Studio

Photographic Work. Crayons, Framing, Copying and Bromide Enlargements. Made at Short Notice.

The Beagle Studio

MAIN AND CENTRE STS.



you can save money on Pianos and Organs. You will always find the largest stock, best makes and lowest prices.

SEWING MACHINES

We sell on the installment plan. Pianos \$25.00 down, \$10.00 per month. Organs, \$10.00 down, \$5.00 per month.

WASH MACHINES

FROM \$4.00 UP TO \$9.00.

J. SALTZER.

Music Rooms—No. 115 W. Main Street below Market, Bloomsburg, Pa.

Nasal CATARRH

ELLY'S CREAM BALM. In all its stages, Elly's Cream Balm cleanses, soothes and heals the diseased membrane.

HAY FEVER

ELLY'S CREAM BALM. Cream Balm is placed in the nostrils, spreads over the membrane and is absorbed.

PATENTS

Send model, sketch or photo for free report on patentability. For free book on how to secure TRADE-MARKS write to

GASNOW & Co.

Opposite U. S. Patent Office WASHINGTON D. C.

CHICHESTER'S ENGLISH PENNYROYAL PILLS. Original and Only Genuine. In BIRD and GOLD metallic boxes, sealed in Rubber.