

House for a Narrow Corner Lot

THE engraving, as shown herewith, designed by Stanley A. Dennis, 150 Nassau street, New York, represents a very neat and attractive suburban home, one suitable for a narrow corner lot. It can be erected in most locations with all improvements and conveniences for about \$2,000.

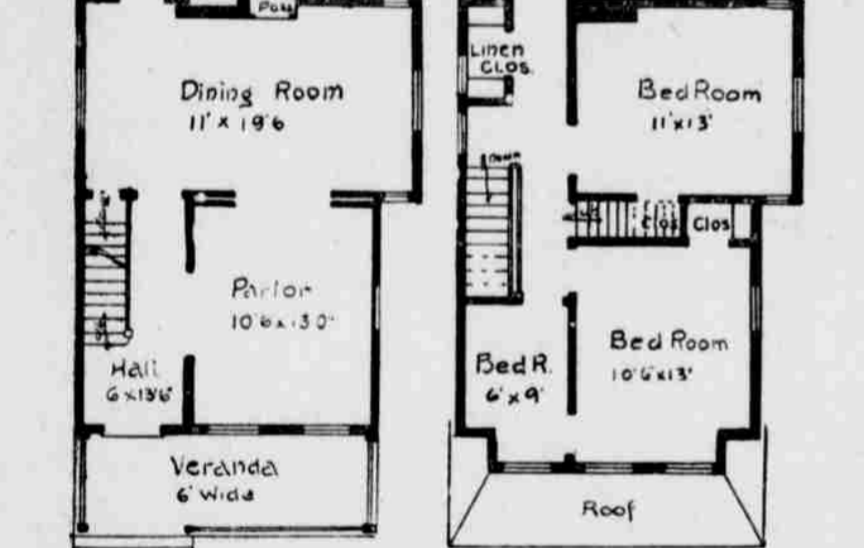


NEAT HOUSE FOR A CORNER LOT.

On the second floor there are four bedrooms, which are 6x3 feet, 10x11 feet, 10x11 feet, 11x12 feet. The bathroom is 8x5 1/2 feet. There is a cellar under the entire house, with stone walls, cement floors, and containing coal bins and hot air furnace, which heats the entire house.

The exterior walls are all sheathed, papered, sanded, complete. The gables and the roof are covered with heavy dimension cypress shingles. The floors throughout are of North Carolina pine.

All of the interior trim is of cypress, made in special design and finished in the natural wood, with one good coat of wood fillers, properly rubbed, and then covered with two coats of varnish.



The staircase is built of ash complete. The interior walls are all plastered, and finished with a hard white finish. The kitchen and bathroom contain full and complete modern plumbing.

Cozy Home at Moderate Cost

THE perspective view and floor plans as here shown, which have been designed for us by Mr. Stanley A. Dennis, of New York, represent a very attractive and moderate priced suburban home.

There is a large porch, on the front side, also on the rear leading around sitting-room and kitchen. The special feature of this house is a large reception hall, stairs and the conveniences of the arrangements on the first floor.

There is a cellar under the entire house with walls of brick. The same also contains a steam boiler, which heats the entire house, and also laundry, storeroom and coal bins, etc.

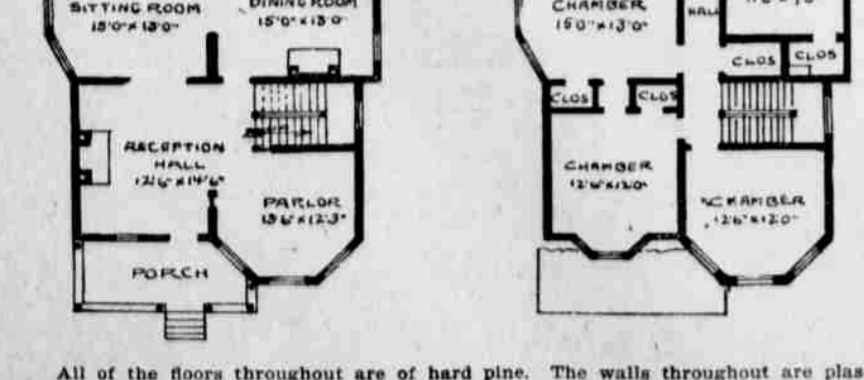


ATTRACTIVE CITY OR SUBURBAN HOME.

The main reception hall is 12x14 feet; parlor is 12x12 feet 3 inches; dining-room, 10x12; sitting room, 10x12; pantry, 8 feet 3 inches by 8 feet 3 inches; kitchen, 10x12; bathroom, 7x9.

All of the framework is of hemlock, and the walls are of ash, papered, sanded and shingled, as shown in the perspective view. All of the main roof is shingled. Ceiling on the first floor is 10 feet, and on second floor 8 1/2.

All of the exterior wood work is painted two good coats of white lead and lined oil paints. The shingles and gables are stained, and those on the roof are shingled.



All of the floors throughout are of hard pine. The walls throughout are plastered and finished with sand finish. All of the trim on the first story, including stairs, is made in special designs out of quartered oak, which is properly rubbed and then covered with two coats of best varnish.

ANNUAL STATEMENT OF THE TOWN OF BLOOMSBURG, FOR THE YEAR 1901.

Tax Roll for 1901 table with columns for property type and amount.

Table of exonerations and other financial adjustments.

J. K. BITTENBENDER, Tax Collector.

Table showing balance on duplicate of 1900 and 1901.

Table showing amounts paid to various contractors and suppliers.

Table showing balance on duplicate of 1897 and 1898.

Table showing amounts paid to various contractors and suppliers.

Table showing balance on duplicate of 1900 and 1901.

Table showing amounts paid to various contractors and suppliers.

Table showing balance on duplicate of 1900 and 1901.

Table showing amounts paid to various contractors and suppliers.

Table showing balance on duplicate of 1900 and 1901.

Table showing amounts paid to various contractors and suppliers.

Table showing balance on duplicate of 1900 and 1901.

Table showing amounts paid to various contractors and suppliers.

Table showing balance on duplicate of 1900 and 1901.

Table showing amounts paid to various contractors and suppliers.

Table showing balance on duplicate of 1900 and 1901.

Table showing amounts paid to various contractors and suppliers.

Table showing balance on duplicate of 1900 and 1901.

Table showing amounts paid to various contractors and suppliers.

Table showing balance on duplicate of 1900 and 1901.

Table showing amounts paid to various contractors and suppliers.

LIGHT.

Table of light bills from Amer Electric Light Co and F Baum.

Table of printing bills from Columbia, printing statement, etc.

Table of police and constable bills from Wesley Knorr, Chief of Police.

Table of fire bills from Frank Kehler, hauling pole, G W Co.

Table of town hall bills from Bloomsburg Steam Company, heat.

Table of miscellaneous bills from P H Freeze, auditor 1900.

Table of sewer bills from W R Kocher, Agent, freight on pipe.

Table of town hall bills from Bloomsburg Steam Company, heat.

Table of miscellaneous bills from P H Freeze, auditor 1900.

Table of sewer bills from W R Kocher, Agent, freight on pipe.

Table of town hall bills from Bloomsburg Steam Company, heat.

Table of miscellaneous bills from P H Freeze, auditor 1900.

Table of sewer bills from W R Kocher, Agent, freight on pipe.

Table of town hall bills from Bloomsburg Steam Company, heat.

Table of miscellaneous bills from P H Freeze, auditor 1900.

Table of sewer bills from W R Kocher, Agent, freight on pipe.

Table of town hall bills from Bloomsburg Steam Company, heat.

Table of miscellaneous bills from P H Freeze, auditor 1900.

Table of sewer bills from W R Kocher, Agent, freight on pipe.

Table of town hall bills from Bloomsburg Steam Company, heat.

Table of miscellaneous bills from P H Freeze, auditor 1900.

Table of sewer bills from W R Kocher, Agent, freight on pipe.

Table of town hall bills from Bloomsburg Steam Company, heat.

STATEMENT SHOWING ACCRUED LIABILITIES AND AVAILABLE ASSETS.

Table of liabilities including orders outstanding and coupons.

Table of assets including balance on duplicate of 1895 and 1896.

Table of liabilities in excess of assets.

Table of charter notice regarding incorporation of a company.

Table of charter notice regarding incorporation of a company.

Table of charter notice regarding incorporation of a company.

Table of charter notice regarding incorporation of a company.

Table of charter notice regarding incorporation of a company.

Table of charter notice regarding incorporation of a company.

Table of charter notice regarding incorporation of a company.

Table of charter notice regarding incorporation of a company.

Table of charter notice regarding incorporation of a company.

Table of charter notice regarding incorporation of a company.

Table of charter notice regarding incorporation of a company.

Table of charter notice regarding incorporation of a company.

Table of charter notice regarding incorporation of a company.

Table of charter notice regarding incorporation of a company.

Table of charter notice regarding incorporation of a company.

Table of charter notice regarding incorporation of a company.

Table of charter notice regarding incorporation of a company.

Table of charter notice regarding incorporation of a company.

Table of charter notice regarding incorporation of a company.

Table of charter notice regarding incorporation of a company.

H. R. STEES, ATTORNEY-AT-LAW.

Office in Ent Bldg, BLOOMSBURG, PA.

H. A. MCKILLIP, ATTORNEY-AT-LAW.

Columbian Building, 2d Floor, BLOOMSBURG, PA.

RALPH R. JOHN, ATTORNEY AT LAW.

Hartman Building, Market Square, Bloomsburg, Pa.

IKELER & IKELER, ATTORNEY-AT-LAW.

Office back of Farmers' National Bank, BLOOMSBURG, PA.

CLYDE CHAS. YETTER, ATTORNEY-AT-LAW.

Office in Wirt's Building, BLOOMSBURG, PA.

W. H. RHAWN, ATTORNEY AT LAW.

Office, Corner of Third and Main Sts, CATAWISSA, PA.

CLINTON HERRING, ATTORNEY-AT-LAW.

Office with Grant Herring, BLOOMSBURG, PA.

WILLIAM C. JOHNSTON, ATTORNEY AT LAW.

Office in Wells' Building over B. A. Gidding's Clothing Store, Bloomsburg, Pa. Will be in Millville on Tuesdays.

H. MONTGOMERY SMITH, ATTORNEY-AT-LAW.

Office in Wirt building, over Alexander Bros., 11-16-99

EDWARD FLYNN, ATTORNEY-AT-LAW.

Office Liddicoat building, Locust avenue, BLOOMSBURG, PA.

J. S. JOHN, M. D., PHYSICIAN AND SURGEON.

Office and residence, 410 Main St, BLOOMSBURG, PA.

DR. M. J. HESS, DENTISTRY IN ALL ITS BRANCHES.

Crown and bridge work, by the use of Gas, and free of artificial teeth are inserted.

DR. W. H. HOUSE, SURGEON DENTIST.

Office Barton's Building, Main Street, BLOOMSBURG, PA.

C. WATSON MCKELVEY, FIRE INSURANCE AGENT.

Represents twelve of the strongest fire insurance companies in the world, among which are...

M. P. LUTZ & SON, INSURANCE AND REAL ESTATE AGENTS AND BROKERS.

N. W. Corner Main and Centre Streets, BLOOMSBURG, PA.

SADE T. VANNATTA, ATTORNEY AT LAW, INSURANCE AND REAL ESTATE AGENT.

Office in Lockard's Building, BLOOMSBURG, PA.

C. W. MILLER, ATTORNEY-AT-LAW.

Wirt's Building, 2d Floor, BLOOMSBURG, PA.

JOHN G. FREEZE & JOHN G. HARMAN, ATTORNEYS AND COUNSELLORS AT LAW.

Offices: Centre St., first door below Opera House BLOOMSBURG, PA.

A. N. YOST, ATTORNEY-AT-LAW.

Wirt Building, Court House Square, BLOOMSBURG, PA.

W. A. HARTZEL, PROP., CITY HOTEL.

No. 121 West Main Street, Bloomsburg, Pa.

EXCHANGE HOTEL, G. SNYDER, Proprietor.

(Opposite the Court House) BLOOMSBURG, PA.

Large and convenient sample room, bath rooms, hot and cold water, and modern conveniences.

Bar stocked with best liquors. First-class livery attached.