

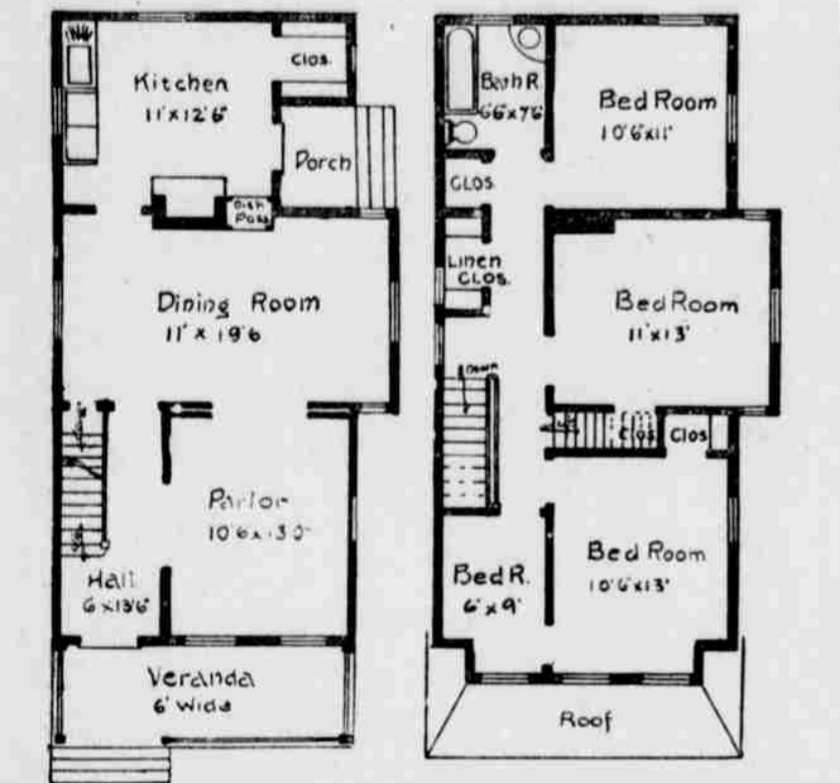
House for a Narrow Corner Lot

The engraving, as shown herewith, designed by Stanley A. Dennis, 156 Nassau Street, New York, represents a very neat and attractive suburban home...



NEAT HOUSE FOR A CORNER LOT.

On the second floor there are four bedrooms, which are 6x9 feet, 10x13 feet, 11x13 feet, 11x13 feet. The bathroom is 6x9 feet. There is a cellar under the entire house...



natural wood, with one good coat of wood fillers, properly rubbed, and then covered with two coats of varnish. The staircase is built of ash complete.

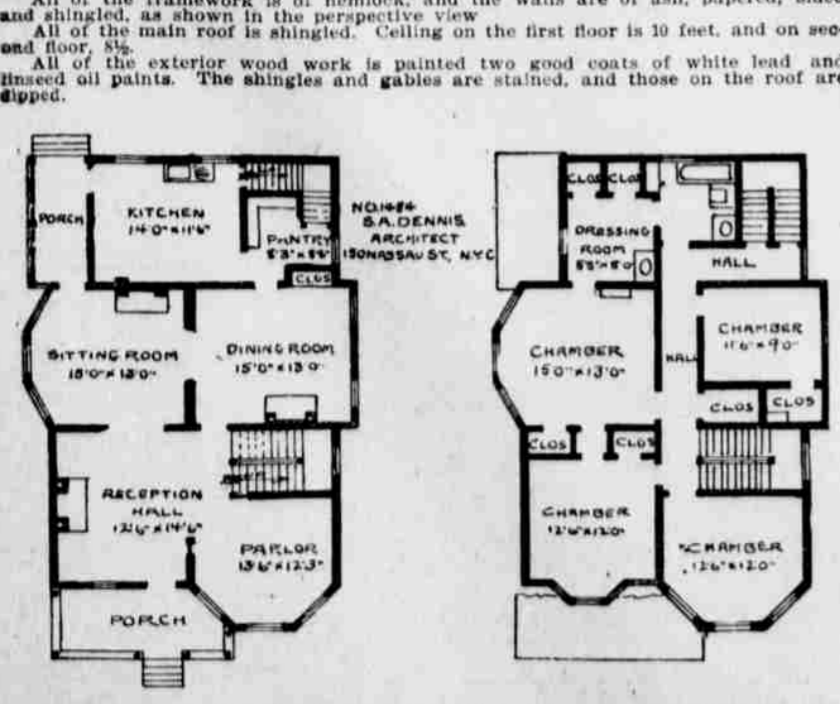
Cozy Home at Moderate Cost

The perspective view and floor plans as here shown, which have been designed for by Mr. Stanley A. Dennis, of New York, represent a very attractive and moderate priced suburban home.



ATTRACTIVE CITY OR SUBURBAN HOME.

The main reception hall is 12x14 1/2 feet; parlor is 13x12 1/2 feet 3 inches; dining-room, 15x12 feet; sitting room, 15x13; pantry, 8 feet 3 inches by 5 feet 4 inches; kitchen, 11x14 1/2 feet.



All of the floors throughout are of hard pine. The walls throughout are plastered and finished with sand finish. All of the trim on the first story, including stairs, is made in special designs out of quartered oak...

ANNUAL STATEMENT OF THE TOWN OF BLOOMSBURG, FOR THE YEAR 1901.

A large financial table detailing the town's budget for 1901, including sections for 'TAX ROLL FOR 1901', 'LIGHT', 'PRINTING', 'POLICE AND CONSTABLE', 'FIRE', 'SEWERS', 'MISCELLANEOUS', 'BONDS DUE AS FOLLOWS', 'STREETS AND HIGHWAYS', and 'WATER'. It lists various items, amounts, and dates.

STATEMENT SHOWING ACCRUED LIABILITIES AND AVAILABLE ASSETS.

A financial table detailing the town's accrued liabilities and available assets. It lists various categories like 'Orders outstanding', 'Coupons outstanding', 'Balance on Duplicate of 1901', 'Assets', and 'Liabilities in excess of assets'.

H. R. STEES, ATTORNEY-AT-LAW. Office in Ent Bldg, BLOOMSBURG, PA.

H. A. MCKILLIP, ATTORNEY-AT-LAW. Columbian Building, 2nd Floor, BLOOMSBURG, PA.

RALPH R. JOHN, ATTORNEY AT LAW, Hartman Building, Market Square, BLOOMSBURG, PA.

IKELER & IKELER, ATTORNEY-AT-LAW, Office back of Farmers' National Bank, BLOOMSBURG, PA.

CLYDE CHAS. YETTER, ATTORNEY-AT-LAW, Office in Wirt's Building, BLOOMSBURG, PA.

W. H. RHAWN, ATTORNEY AT LAW, Office, Corner of Third and Main Sts. CATAWISSA, PA.

WILLIAM C. JOHNSTON, ATTORNEY-AT-LAW, Office in Wells' Building over B. A. Gidding's Clothing Store, BLOOMSBURG, PA.

H. MONTGOMERY SMITH, ATTORNEY-AT-LAW, Office in Wirt building, over Alexander Bros., 11-16-99.

EDWARD. FLYNN, ATTORNEY-AT-LAW, CENTRALIA, PA.

J. S. JOHN, M. D., PHYSICIAN AND SURGEON, Office and residence, 416 Market St BLOOMSBURG, PA.

DR. M. J. HESS, DENTISTRY IN ALL ITS BRANCHES, Crown and bridge work.

DR. W. H. HOUSE, SURGEON DENTIST, Office Barton's Building, Main Street, BLOOMSBURG, PA.

C. WATSON MCKELLEN, FIRE INSURANCE AGENT, Represents twelve of the strongest agencies in the world...

M. P. LUTZ & SON, (SUCCESSORS TO FRENCH & SON) INSURANCE AND REAL ESTATE AGENTS AND BROKERS.

SADE T. VANNATTA, (Successor to C. F. Knapp) GENERAL INSURANCE, Office 23 Iron St., BLOOMSBURG, PA.

CITY HOTEL, W. A. Hartzel, Prop., No. 121 West Main Street, Large and convenient sample rooms...

EXCHANGE HOTEL, G. SNYDER, Proprietor, (Opposite the Court House) Large and convenient sample rooms...

PROFESSIONAL CARDS

A collection of professional notices and advertisements, including lawyers (N. U. Funk, A. L. Fritz, J. H. Maize), accountants (John G. Freeze, John G. Harman), and insurance agents (C. W. Miller, A. N. Yost).