

Two Doors below Postoffice.

Opposite Bloomsburg Banking Company.

# J. M. GIDDING & CO.

## BLOOMSBURG, PA.

### 1894 Special Fall and Winter Inauguration Sale 1894.

For Ten Days, Commencing Thursday, September 27th.

10 DAYS,

10 DAYS,

10 DAYS,

10 DAYS.

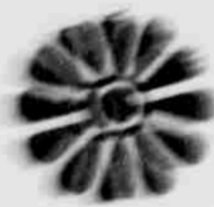
Of special values in Men's, Boys' and Children's Suits and Overcoats, to reduce our over-loaded tables. 22275 square feet of floor space, thick full of the very best Clothing, and an effort to hurry up buyers have induced us to offer special advantages, which will be appreciated by every clothing wearer in this county.

TO  
BY  
N  
E  
H

N  
E  
H  
D  
A  
Y  
S



Special lot of long coats, (about 100) especially made at \$10.00, 12.00, 15.00, 20.00, 25.00.

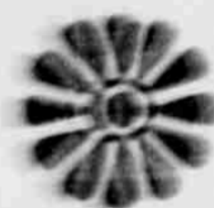


\$10.00  
\$10.00

For this Man's Suit, sack or cutaway, in many colors. Absolutely all wool.



\$10.00.



\$10.00  
10.00

Fast color. Equal to custom made. See them and judge for yourself.



This Boys' Reeler, splendidly made \$2.50, 3.50, 4.00 and 5.00. Not equaled in country at price.

T  
E  
N  
D  
A  
Y  
S

T  
E  
N  
D  
A  
Y  
S



Fauntleroy Suits, blue, grey, wool \$22.50, \$10, \$35, \$50. All immense line, and prices 20 per cent. under other houses.

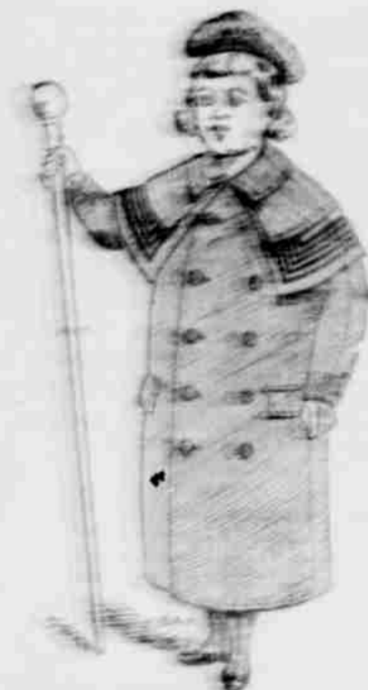
### Men's and Young Men's

## OVERCOATS.

Blue and Black. Cut long or medium, at your wish. All Wool. Fast color.

\$7.50. \$7.50. \$7.50. \$7.50.

Regular price \$10.00 at any other house in the county.



BOYS' OVERCOATS. The biggest line ever shown in this county. \$1.50, 2.00, 2.50, 3.00, 4.00, 5.00, 6.00, 7.50 and 8.50. Not equaled anywhere at the price.



Our extra fine overcoats at \$10, \$12, \$15, \$18 and \$20 are perfect in every way, and we'll match them against anything a merchant tailor can turn out. Visit our store, look through our stock, post yourself on styles and prices. No harm done if you don't buy.

# J. M. GIDDING & CO., CLOTHIERS.

## BLOOMSBURG,

## PENN'A.