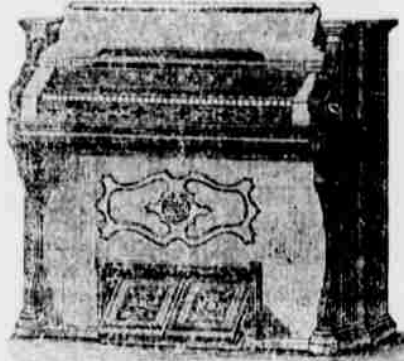


SALTZERS'



Don't Want the Earth. It isn't every body that wants the earth, but when people make up their minds that they want a piano, organ, or sewing machine, they want the best on earth for the least money.



The celebrated White, and other makes of Sewing Machines. Satisfaction guaranteed by J. Saltzer, Bloomsburg, Pa.

CROWN ACME, The Best Burning Oil That Can be Made From Petroleum.

It gives a brilliant light. It will not smoke the chimneys. It will not char the wick. It has a high fire test. It will not explode. It is pre-eminently a family safety oil.

We Challenge Comparison with any other illuminating oil made.

We stake our Reputation, as Refiners upon the statement that it is

The Best Oil IN THE WORLD.

ASK YOUR DEALER FOR CROWN - ACME

The Atlantic Refining Co., BLOOMSBURG STATION, BLOOMSBURG, PA.

BULLS-HEAD DAYS' POULTRY POWDER. CURES CHICKEN-CHOLERA, SCURF, ROUP, DEBILITY & SMOKE-LANG'S CIGARETTES For Cauterizing - Price 10 Cts. At all druggists.

WHAT THE FIGURES SAY.

Some Falsities About Cleveland's Pension Voted Contradicted. The senior Republican organ says: "When opportunity was afforded Mr. Cleveland to demonstrate practical regard for the soldiers, to prove that he appreciated their services to the country and believed in giving them generous recognition—what then? Well, it is the general opinion of the soldiers that as president of the United States he failed them."

Figures speak louder than opinions. This is what the official figures show as to President Cleveland's practical regard for the soldiers.

The pension claims allowed during President Cleveland's administration and during the preceding Republican administration were as follows:

Table with 2 columns: UNDER CLEVELAND, UNDER GARFIELD-ARTHUR. Rows for 1881, 1882, 1883, 1884.

Excess under Cleveland, \$4,678,000. The amounts disbursed for pensions during these two terms were as follows:

Table with 2 columns: UNDER CLEVELAND, UNDER GARFIELD-ARTHUR. Rows for 1885, 1886, 1887, 1888.

Does this look as though President Cleveland did not believe in giving the soldiers "generous recognition"? Put the official facts against anybody's prejudices or opinions!—New York World.

The True Democratic Plan. There is nothing disgraceful in the Democratic plan of campaign. We believe that this is a fight between the people and the powerful protected monopolies, and it is therefore reasonable to ask the people to help the party which advocates their cause.

Counting Down to Business. The people are weary of sectionalism at last, and have thoroughly learned that it accomplishes no good; that the bloody shirt was an obsolete emblem, and that while they have been entertained by such useless sentimentalism the party in power has been planning centralism and invasion upon their rights.

Republicans Conditionally Happy. The Republicans must be relieved to know that the last state election is over and that they will not be whipped again till next month.

Make It Unanimous. The Republicans are on the run and may not carry a dozen states. This is the hour for Minnesotans who have been straddling the fence on the tariff to get down on the right side with the masses and help to make it unanimous.—St. Paul Globe.

Frying for Bennie. Bring the good old frying pan, we're going to fry some fat! Bring a peck of anthracite in grandpa's old white hat. Put the proticks in the pan, then we'll know "where they're at" While we are frying for Bennie. Hurrab, hurrab, for Harrison and Reid! Hurrab, hurrab, while the fire we feed! We'll make the proticks give us all the fat we need. While we are frying for Bennie. Put them in the frying pan in little "blocks of five." While Dudley gently blows the coals to keep the flames alive. Only by such methods can the grand old party thrive. So we are frying for Bennie. Hurrab, hurrab, for Dudley and for Quay! Hurrab, hurrab, for teaching us the way! To carry any doubtful state on election day. While we are frying for Bennie. Tell the honest workmen we love them one, and the least. Tell how Whitelaw recognized the union at one call! Tell them, though they wonder at our monumental gall, While we are frying for Bennie. Hurrab, hurrab, for Whitelaw and Bent! Hurrab, hurrab, ye honest workmen! Shout with Andrew Carnegie, shout hurrab, again, again, again, while we are frying for Bennie. While we are frying for Bennie.

The Cook's PUZZLE

How to avoid soddan pastry? THE PROBLEM is SOLVED by the production of OUR NEW SHORTENING COTTOLENE which makes light, crisp, healthful, wholesome pastry. Mrs. McBride, Marion Harland, and other expert cooking authorities endorse COTTOLENE. You can't afford to do without COTTOLENE.

Made only by N. K. FAIRBANK & CO., CHICAGO and 128 N. Delaware Ave., Phila.



Interpreting Young Men: True & Co. instructed and started me. I worked steadily and made money fast. I was expected to become a millionaire in a few years. I was disappointed. I was disappointed. I was disappointed.

MONEY

Wisely invested will soon double itself, and there are often as many elements of safety surrounding a good paying investment as one that pays small dividends. The earning capacity of every investment is the foundation of dividends. The Atlantic Home Furnishing Co., of Maine, organized in 1887, has paid its stockholders 9 semi-annual dividends of 5 per cent. each (10 per cent. a year) and is earning a handsome surplus besides. It is a buy and sell business and a safe investment for all classes. The authorized capital is \$1,000,000, of which \$750,000 has been paid in. To further increase the business, \$50,000 of the Treasury Stock is offered until March 15th, at par, \$10 per share. Price of stock will be advanced February 18th to take effect on above date. For full particulars address the company, Box 1218, Boston, Mass. or Portland, Me.

Scientific American Agency for PATENTS. For information and free Handbook write to MUNN & CO., 310 Broadway, New York. Oldest bureau for securing patents in America. Every patent taken out by us is brought before the public by a notice given free of charge in the Scientific American.

E. A. RAWLINGS.

All Kinds of Meat. Beef, Veal, Lamb, Mutton, Pork, Hams, Bacon, Tongues, Bologna, &c. Free Delivery to all parts of the town. MAIN STREET, BLOOMSBURG, PA.

WALL PAPER BARGAINS. At Less than Manufacturers' Prices TO CLOSE OUT 1892 GOODS. Every roll new and selected from the best and latest manufacturers, by whom they are purchased, or also by us. Pretty PAPERS, 3c. Roll. HANDSOME GILTS, 5c. Roll. 6 to 12 inch BORDER, 10c. Roll. 6 to 12 inch BORDER, 15c. Roll. 6 to 12 inch BORDER, 20c. Roll. 6 to 12 inch BORDER, 25c. Roll. 6 to 12 inch BORDER, 30c. Roll. 6 to 12 inch BORDER, 35c. Roll. 6 to 12 inch BORDER, 40c. Roll. 6 to 12 inch BORDER, 45c. Roll. 6 to 12 inch BORDER, 50c. Roll. 6 to 12 inch BORDER, 55c. Roll. 6 to 12 inch BORDER, 60c. Roll. 6 to 12 inch BORDER, 65c. Roll. 6 to 12 inch BORDER, 70c. Roll. 6 to 12 inch BORDER, 75c. Roll. 6 to 12 inch BORDER, 80c. Roll. 6 to 12 inch BORDER, 85c. Roll. 6 to 12 inch BORDER, 90c. Roll. 6 to 12 inch BORDER, 95c. Roll. 6 to 12 inch BORDER, 1.00. Roll. 6 to 12 inch BORDER, 1.05. Roll. 6 to 12 inch BORDER, 1.10. Roll. 6 to 12 inch BORDER, 1.15. Roll. 6 to 12 inch BORDER, 1.20. Roll. 6 to 12 inch BORDER, 1.25. Roll. 6 to 12 inch BORDER, 1.30. Roll. 6 to 12 inch BORDER, 1.35. Roll. 6 to 12 inch BORDER, 1.40. Roll. 6 to 12 inch BORDER, 1.45. Roll. 6 to 12 inch BORDER, 1.50. Roll. 6 to 12 inch BORDER, 1.55. Roll. 6 to 12 inch BORDER, 1.60. Roll. 6 to 12 inch BORDER, 1.65. Roll. 6 to 12 inch BORDER, 1.70. Roll. 6 to 12 inch BORDER, 1.75. Roll. 6 to 12 inch BORDER, 1.80. Roll. 6 to 12 inch BORDER, 1.85. Roll. 6 to 12 inch BORDER, 1.90. Roll. 6 to 12 inch BORDER, 1.95. Roll. 6 to 12 inch BORDER, 2.00. Roll. 6 to 12 inch BORDER, 2.05. Roll. 6 to 12 inch BORDER, 2.10. Roll. 6 to 12 inch BORDER, 2.15. Roll. 6 to 12 inch BORDER, 2.20. Roll. 6 to 12 inch BORDER, 2.25. Roll. 6 to 12 inch BORDER, 2.30. Roll. 6 to 12 inch BORDER, 2.35. Roll. 6 to 12 inch BORDER, 2.40. Roll. 6 to 12 inch BORDER, 2.45. Roll. 6 to 12 inch BORDER, 2.50. Roll. 6 to 12 inch BORDER, 2.55. Roll. 6 to 12 inch BORDER, 2.60. Roll. 6 to 12 inch BORDER, 2.65. Roll. 6 to 12 inch BORDER, 2.70. Roll. 6 to 12 inch BORDER, 2.75. Roll. 6 to 12 inch BORDER, 2.80. Roll. 6 to 12 inch BORDER, 2.85. Roll. 6 to 12 inch BORDER, 2.90. Roll. 6 to 12 inch BORDER, 2.95. Roll. 6 to 12 inch BORDER, 3.00. Roll. 6 to 12 inch BORDER, 3.05. Roll. 6 to 12 inch BORDER, 3.10. Roll. 6 to 12 inch BORDER, 3.15. Roll. 6 to 12 inch BORDER, 3.20. Roll. 6 to 12 inch BORDER, 3.25. Roll. 6 to 12 inch BORDER, 3.30. Roll. 6 to 12 inch BORDER, 3.35. Roll. 6 to 12 inch BORDER, 3.40. Roll. 6 to 12 inch BORDER, 3.45. Roll. 6 to 12 inch BORDER, 3.50. Roll. 6 to 12 inch BORDER, 3.55. Roll. 6 to 12 inch BORDER, 3.60. Roll. 6 to 12 inch BORDER, 3.65. Roll. 6 to 12 inch BORDER, 3.70. Roll. 6 to 12 inch BORDER, 3.75. Roll. 6 to 12 inch BORDER, 3.80. Roll. 6 to 12 inch BORDER, 3.85. Roll. 6 to 12 inch BORDER, 3.90. Roll. 6 to 12 inch BORDER, 3.95. Roll. 6 to 12 inch BORDER, 4.00. Roll. 6 to 12 inch BORDER, 4.05. Roll. 6 to 12 inch BORDER, 4.10. Roll. 6 to 12 inch BORDER, 4.15. Roll. 6 to 12 inch BORDER, 4.20. Roll. 6 to 12 inch BORDER, 4.25. Roll. 6 to 12 inch BORDER, 4.30. Roll. 6 to 12 inch BORDER, 4.35. Roll. 6 to 12 inch BORDER, 4.40. Roll. 6 to 12 inch BORDER, 4.45. Roll. 6 to 12 inch BORDER, 4.50. Roll. 6 to 12 inch BORDER, 4.55. Roll. 6 to 12 inch BORDER, 4.60. Roll. 6 to 12 inch BORDER, 4.65. Roll. 6 to 12 inch BORDER, 4.70. Roll. 6 to 12 inch BORDER, 4.75. Roll. 6 to 12 inch BORDER, 4.80. Roll. 6 to 12 inch BORDER, 4.85. Roll. 6 to 12 inch BORDER, 4.90. Roll. 6 to 12 inch BORDER, 4.95. Roll. 6 to 12 inch BORDER, 5.00. Roll. 6 to 12 inch BORDER, 5.05. Roll. 6 to 12 inch BORDER, 5.10. Roll. 6 to 12 inch BORDER, 5.15. Roll. 6 to 12 inch BORDER, 5.20. Roll. 6 to 12 inch BORDER, 5.25. Roll. 6 to 12 inch BORDER, 5.30. Roll. 6 to 12 inch BORDER, 5.35. Roll. 6 to 12 inch BORDER, 5.40. Roll. 6 to 12 inch BORDER, 5.45. Roll. 6 to 12 inch BORDER, 5.50. Roll. 6 to 12 inch BORDER, 5.55. Roll. 6 to 12 inch BORDER, 5.60. Roll. 6 to 12 inch BORDER, 5.65. Roll. 6 to 12 inch BORDER, 5.70. Roll. 6 to 12 inch BORDER, 5.75. Roll. 6 to 12 inch BORDER, 5.80. Roll. 6 to 12 inch BORDER, 5.85. Roll. 6 to 12 inch BORDER, 5.90. Roll. 6 to 12 inch BORDER, 5.95. Roll. 6 to 12 inch BORDER, 6.00. Roll. 6 to 12 inch BORDER, 6.05. Roll. 6 to 12 inch BORDER, 6.10. Roll. 6 to 12 inch BORDER, 6.15. Roll. 6 to 12 inch BORDER, 6.20. Roll. 6 to 12 inch BORDER, 6.25. Roll. 6 to 12 inch BORDER, 6.30. Roll. 6 to 12 inch BORDER, 6.35. Roll. 6 to 12 inch BORDER, 6.40. Roll. 6 to 12 inch BORDER, 6.45. Roll. 6 to 12 inch BORDER, 6.50. Roll. 6 to 12 inch BORDER, 6.55. Roll. 6 to 12 inch BORDER, 6.60. Roll. 6 to 12 inch BORDER, 6.65. Roll. 6 to 12 inch BORDER, 6.70. Roll. 6 to 12 inch BORDER, 6.75. Roll. 6 to 12 inch BORDER, 6.80. Roll. 6 to 12 inch BORDER, 6.85. Roll. 6 to 12 inch BORDER, 6.90. Roll. 6 to 12 inch BORDER, 6.95. Roll. 6 to 12 inch BORDER, 7.00. Roll. 6 to 12 inch BORDER, 7.05. Roll. 6 to 12 inch BORDER, 7.10. Roll. 6 to 12 inch BORDER, 7.15. Roll. 6 to 12 inch BORDER, 7.20. Roll. 6 to 12 inch BORDER, 7.25. Roll. 6 to 12 inch BORDER, 7.30. Roll. 6 to 12 inch BORDER, 7.35. Roll. 6 to 12 inch BORDER, 7.40. Roll. 6 to 12 inch BORDER, 7.45. Roll. 6 to 12 inch BORDER, 7.50. Roll. 6 to 12 inch BORDER, 7.55. Roll. 6 to 12 inch BORDER, 7.60. Roll. 6 to 12 inch BORDER, 7.65. Roll. 6 to 12 inch BORDER, 7.70. Roll. 6 to 12 inch BORDER, 7.75. Roll. 6 to 12 inch BORDER, 7.80. Roll. 6 to 12 inch BORDER, 7.85. Roll. 6 to 12 inch BORDER, 7.90. Roll. 6 to 12 inch BORDER, 7.95. Roll. 6 to 12 inch BORDER, 8.00. Roll. 6 to 12 inch BORDER, 8.05. Roll. 6 to 12 inch BORDER, 8.10. Roll. 6 to 12 inch BORDER, 8.15. Roll. 6 to 12 inch BORDER, 8.20. Roll. 6 to 12 inch BORDER, 8.25. Roll. 6 to 12 inch BORDER, 8.30. Roll. 6 to 12 inch BORDER, 8.35. Roll. 6 to 12 inch BORDER, 8.40. Roll. 6 to 12 inch BORDER, 8.45. Roll. 6 to 12 inch BORDER, 8.50. Roll. 6 to 12 inch BORDER, 8.55. Roll. 6 to 12 inch BORDER, 8.60. Roll. 6 to 12 inch BORDER, 8.65. Roll. 6 to 12 inch BORDER, 8.70. Roll. 6 to 12 inch BORDER, 8.75. Roll. 6 to 12 inch BORDER, 8.80. Roll. 6 to 12 inch BORDER, 8.85. Roll. 6 to 12 inch BORDER, 8.90. Roll. 6 to 12 inch BORDER, 8.95. Roll. 6 to 12 inch BORDER, 9.00. Roll. 6 to 12 inch BORDER, 9.05. Roll. 6 to 12 inch BORDER, 9.10. Roll. 6 to 12 inch BORDER, 9.15. Roll. 6 to 12 inch BORDER, 9.20. Roll. 6 to 12 inch BORDER, 9.25. Roll. 6 to 12 inch BORDER, 9.30. Roll. 6 to 12 inch BORDER, 9.35. Roll. 6 to 12 inch BORDER, 9.40. Roll. 6 to 12 inch BORDER, 9.45. Roll. 6 to 12 inch BORDER, 9.50. Roll. 6 to 12 inch BORDER, 9.55. Roll. 6 to 12 inch BORDER, 9.60. Roll. 6 to 12 inch BORDER, 9.65. Roll. 6 to 12 inch BORDER, 9.70. Roll. 6 to 12 inch BORDER, 9.75. Roll. 6 to 12 inch BORDER, 9.80. Roll. 6 to 12 inch BORDER, 9.85. Roll. 6 to 12 inch BORDER, 9.90. Roll. 6 to 12 inch BORDER, 9.95. Roll. 6 to 12 inch BORDER, 10.00.

RAILROAD TIME TABLE

Table with columns: DELAWARE LACKAWANNA & WESTERN RAILROAD, BLOOMSBURG DIVISION, STATIONS, NORTH, SOUTH. Lists various stations and their corresponding times.

Pennsylvania Railroad.

Table with columns: P. & E. R. R. DIV. AND N. C. RY. In effect May 22, 1892. Trains leave Sunday EASTWARD. Lists various train routes and times.

PROFESSIONAL CARDS.

Professional cards for various lawyers and doctors in Bloomsburg, Pa. Includes names like N. U. Funk, A. L. Fritz, C. W. Miller, W. H. Snyder, J. S. Garrison, B. Frank Zarr, W. H. Rhawn, J. B. McKelvy, Dr. J. C. Rutter, Dr. William M. Reber, Honora A. Robbins, Geo. E. Elwell, Frank P. Billmeyer, E. F. Hartman, and others.

WHITE & YOST,

Advertisement for White & Yost, Attorneys-at-Law. Located at Wirt Building, Court House Square, Bloomsburg, Pa. Lists various legal services and contact information.