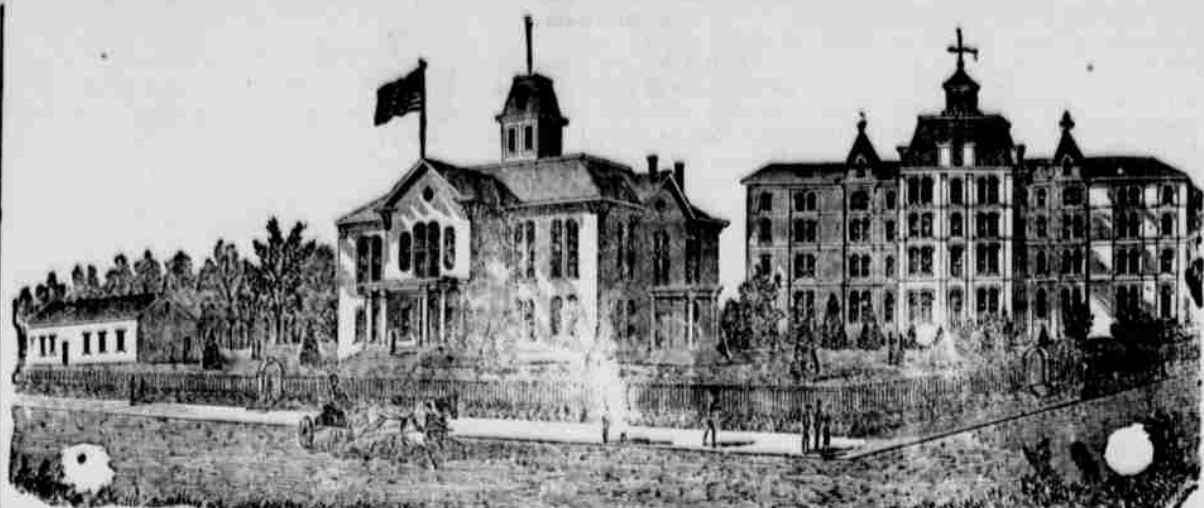


RAILROAD TIME TABLE

Table with columns for Pennsylvania Railroad, Northern Central Railway, and Delaware, Lackawanna and Western Railroad, listing various routes and departure times.



BLOOMSBURG STATE NORMAL SCHOOL, SIXTH NORMAL SCHOOL DISTRICT, Bloomsburg, Columbia County, Pennsylvania.

Rev. D. J. WALLER, Jr., Ph. D., Principal. This school, as at present constituted, offers the very best facilities for professional and classical training.

Dr. THOMAS' ELEGANT OIL. Cures Rheumatism, Lumbago, Lambe Back, Sprains and Bruises, Asthma, Catarrh, Coughs, Colic, Sore Throat, Diarrhea, Burns, Frost Bites, Tooth, Ear, and Head-ache, and all Pains and Aches.

How James Surrendered. When Frank James surrendered to Governor Crittenden at Jefferson City...

THE SPHINX. In times almost pre-historic, this creature was born of Egypt's soil and solemn mythology.

THE SPHINX (continued). The Sphinx borrowed the idea from Egypt; but in the hands of artists it lost its grandeur, while it gained its grace.

THE SPHINX (continued). At Karnak, where is found the largest and most costly temple ever reared on earth, the avenue connecting it with Luxor is a mile in length.

THE SPHINX (continued). One of the wonders of the world is the Sphinx that stands on the edge of the Libyan Desert, seven miles from Cairo.

ATLANTA'S PRETTY SHOEMAKER. Says a correspondent of the Savannah (Georgia) News: Atlanta can boast of the genuine curiosity—a live female shoemaker.

THE BAD AND WORTHLESS. Are never initiated or counterfeited. This is especially true of a family medicine, and it is positive proof that the remedy instituted is of the highest value.

THE LATEST FASHION IN CURTAINS. The curtain of unbleached muslin, with turkey red border, no longer waves from suburban windows.

A FAITHFUL SWEETHEART. The heather blossomed gently along the roadside; the hum of insects and the voices of birds filled the summer air.

BLOOMSBURG PLANING MILL. The undersigned having put his Planing Mill on Hallowed Street in Bloomsburg, is prepared to do all kinds of work in his line.

J. J. BROWER, CARPETS. Frames, Sash, Doors, Blinds, Mouldings, Flooring, Etc.

Speer's PORT GRAPE WINE. Used in the Protestant Churches for Communion.

Speer's PORT GRAPE WINE. Four Years Old. Excellent for Ladies and Weakly Persons.

P. J. Sherry. The P. J. Sherry is a wine of superior character, and partaken of the rich qualities of the grape from which it is made.

P. J. Brandy. This BRANDY stands unrivaled in this country. It is a pure distillation from the grape and contains valuable medicinal properties.

LYDIA E. PINKHAM'S VEGETABLE COMPOUND. A Home Cure for all Female Weaknesses, including Leucorrhoea, Irregular and Painful Menstruation, etc.

KIDNEY-WORT. THE GREAT CURE FOR RHEUMATISM. BLOOD PURIFIER. Cures Rheumatism, Gout, Gravel, etc.

C. E. SAVAGE. Silverware, Watches, Jewelry, Clocks. Dealer in the finest quality of watches.

W. M. F. BODINE. PAPER HANGING. HOUSE PAINTING. PAINTING AND PAPER HANGING.

KNABE. PIANO-FORTES. UPRIGHT AND GRAND. Tone, Touch, Workmanship & Durability.

WANTED. Serraglio, Hebraic, Hebrew, Arabic, Persian, Turkish, Greek, Latin, French, Italian, Spanish, Portuguese, Russian, German, English, etc.

Wanted OUR WILD INDIANS! For Gen. Sherman's new book, entitled 'Thirty-Three Years Among Our Wild Indians!'

B. F. HARTMAN. AMERICAN INSURANCE COMPANIES. Representing the following: New York Mutual, etc.

ESTLEY ORGAN. Every Estley Organ Sold is made Throughout with Equal fidelity, and Yields unrivaled tones.

CELEBRATED WEBER PIANOS. And other first class Pianos, and a large lot of Five cent Sheet Music.

WEBER-HARDMAN. PIANOS. FINE INLaid FRENCH WALNUT CASE ORGAN, 9 STOPS, \$90 CASH.

Beware OF FRAUD. BENSON'S CAPSICINE PLASTERS. Have been imitated. And their excellent reputation injured by worthless imitations.

PARKER'S HAIR BALM. Restores the youthful color to Gray or Faded Hair. Parker's Hair Balm is finely perfumed and is guaranteed to do its duty.

PARKER'S GINGERTONIC. A Satisfying Health and Strength Restorer. If you are a weakling and through nervousness, indigestion, or any other cause, are suffering from a general debility.

NORTHERN CENTRAL RAILWAY. On and after February 19th, 1882, trains will leave as follows:

J. SALTZER, MUSIC ROOM, FIFTH STORE BELOW MARKET STREET, BLOOMSBURG, PA.

DELAWARE, LACKAWANNA AND WESTERN RAILROAD. BLOOMSBURG DIVISION. NORTH STATIONS.

W. F. HALSTAD, Superintendent's Office, Scranton, Feb. 11, 1882.

W. F. HALSTAD, Superintendent's Office, Scranton, Feb. 11, 1882.

FLORESTON. Its rich and lasting fragrance has made this deodorant perfume one of the most popular in the world.