

The Advancement of Agriculture.

Formerly, even here in Eastern Pennsylvania, farmers confined their operations to the little capital they may have possessed at the start, and therefore depended for any increase of business upon any little profits they might obtain.

In the West and South the want of banking capital has been severely felt in both agriculture and commerce; but this is steadily being improved so that in time to come the farmer will be able to obtain for his produce the full market value.

That in a country like ours, so vast and diversified in its interests and resources, there can ever be for a century to come anything else than just such a demand, we are inclined to believe is a true statement of the facts.

The true remedy would seem to be the one found so effectual in New England and New York, where the savings banks hold some five hundred millions of dollars of deposits and where the loans are correspondingly great.

Chickens that come into market about April bring the best prices, often remunerating the poulterer more at an early age than when allowed to mature.

But how are chickens to be hatched early? It is the query. It can be done by selection of the pullets at the proper time.

The first important matter is to keep the early hatched pullets, as they come into laying season. Then carefully notice those that mature the earliest and begin to lay early.

If none of these precautions have been taken in the raising of the chickens, the immediate methods within our reach, such as variable food, warm quarters and cleanliness.

If farmers' wives and daughters so desire, and their home duties will permit, they can secure a revenue that will help to make them independent, give them a freedom they will delight in.

I know a lady whose receipts for the present year, from garden, truck, preserved fruits, berries, etc., amount to over \$300. Not a very large sum, but enough to show that such labor pays.

Richard M. Jackson, the son of an Ohio farmer, went from Steubenville to Stuttgart ten years ago, to complete his musical education, intending to become a professional pianist.

Col. Ingersoll does not mean that it shall be said, after his death, that he turned from infidelity to his dying bed. His secretary, who writes short hand, is instructed to take down accurately whatever he may say on that occasion.

The South permitted the Ryan-Sullivan prize fight, but it was a Northern affair, as viewed by the Louisville Courier-Journal. The brutal mill was fought by two exponents of the superior culture of the North, one of them representing the Empire State and the other the Bay State.

The American Cliff Dwellers.

DISCOVERY OF A WONDERFUL OLD RUINED CITY IN NEW MEXICO.

The Pueblo or village Indians are scattered over an area in New Mexico and Arizona stretching from Taos, on the Rio Grande, south to Yaleta of El Paso, a distance of about 500 miles, and in width about 400 miles.

Mr. Stevenson first heard of it from an Indian chief with whom he sat chatting in the shade of a tree.

"Houses," was the reply. "No, not those on the top," said Mr. Stevenson. "I mean the black spots on the cliff."

The old man fell silent. For six miles along the face of the cliff, except where the elements had cut them away, these ancient cave dwellings extended two, three, four, and sometimes five rows one upon another.

Upon the top of the mesa, or table land above these caves, there were found large circular structures, now in ruins, but with walls to the height of ten or twelve feet still standing.

The south wind is sighing softly among the stately oaks, whose leafy branches shield from the pitiless rays of a July sun the velvety soft lawn that stretches away to the eastward in front of a lovely Dalage county villa.

Well, Beatrice, have you concluded to take me? she says.

The sunbeams flicker erratically down between the leaves, making little lights and shadows on the veranda; the grasshoppers sing among the red clovers; the little foot, which has suspended its movements during the delivery of this interrogatory, resumes its occupation.

No answer comes. A moment longer and the foot taps cease; one or two irresolute vibrations of the body, and then the white arms, gleaming out from the loose sleeves, are around his neck, and the brown locks and gold beard are mingled, while the little head goes down on his shoulders with a storm of sobs.

Richard M. Jackson, the son of an Ohio farmer, went from Steubenville to Stuttgart ten years ago, to complete his musical education, intending to become a professional pianist.

Col. Ingersoll does not mean that it shall be said, after his death, that he turned from infidelity to his dying bed. His secretary, who writes short hand, is instructed to take down accurately whatever he may say on that occasion.

The Southern States have not been accustomed to such aesthetic entertainments, and therefore failed to enact laws prohibiting prize fights.

GREAT GERM DESTROYER.

DARBY'S PROPHYLACTIC FLUID I SMALL FOX ERADICATED.

Contagion destroyed. Wags, fleas, and ticks removed and destroyed. Prevents and cures. Kills lice, and cures. Kills lice, and cures.

Disinfectant and Purifier. Prepared by J. H. ZEILIN & Co., MANUFACTURING CHEMISTS, SOLE PROPRIETORS.

WANTED FARMERS & DEALERS TO KNOW. That the Cheapest and Best Fertilizer, for all Crops.

Baugh's \$25 Phosphate. AT \$25 PER TON OF 2000 POUNDS. This is not an Acid Phosphate, or dissolved S. C. Rock, but is a regular Raw Bone Ammoniated Super-Phosphate.

Address, BAUGH & SONS, Sole Manufacturers, PHILADELPHIA and BALTIMORE.

WEBER-HARDMAN. A FINE INLAID FRENCH WALNUT CASE ORGAN, 9 STOPS, \$50 CASH. Easy Terms. Satisfaction Guaranteed.

BACON'S PIANO WARE ROOMS, MUSIC HALL BLOCK, WILKES-BARRE, PA.

THE LARGEST STORE. JOHN W. ANAMAKER. GRAND DEPOT PHILADELPHIA. DRY GOODS & C.

C. B. ROBBINS, FINE WINES AND LIQUORS, BLOOMSBURG, PA.

CAUTION. GET THE BEST. ESTEY ORGANS.

NEW DAVIS VERTICAL FEED. Will do without basting.

STRONG COMPETITION. In the manufacture of Organs is resulting in the production and sale of cheap goods, made from inferior materials.

J. SALTZER, Gen'l Agent, Bloomsburg, Pa.

NEW HIGH BLOOD! Agents wanted everywhere to sell this medicine.

LEGAL BLANKS. ALWAYS ON HAND AT THIS OFFICE.

Book Binding.

J. W. RAEDER, Practical Book-Binder. 110 WEST MARKET STREET, WILKES-BARRE PA.

W. H. CARTER, CONTRACTOR & BUILDER. DRAWINGS AND SPECIFICATIONS FOR BUILDINGS, FURNISHED.

LATEST STYLES OF CALLING CARDS. At the 'COLUMBIAN OFFICE.'

WANTED FARMERS & DEALERS TO KNOW.

Baugh's \$25 Phosphate. AT \$25 PER TON OF 2000 POUNDS.

Address, BAUGH & SONS, Sole Manufacturers, PHILADELPHIA and BALTIMORE.

WEBER-HARDMAN. A FINE INLAID FRENCH WALNUT CASE ORGAN, 9 STOPS, \$50 CASH.

BACON'S PIANO WARE ROOMS, MUSIC HALL BLOCK, WILKES-BARRE, PA.

THE LARGEST STORE. JOHN W. ANAMAKER. GRAND DEPOT PHILADELPHIA. DRY GOODS & C.

C. B. ROBBINS, FINE WINES AND LIQUORS, BLOOMSBURG, PA.

CAUTION. GET THE BEST. ESTEY ORGANS.

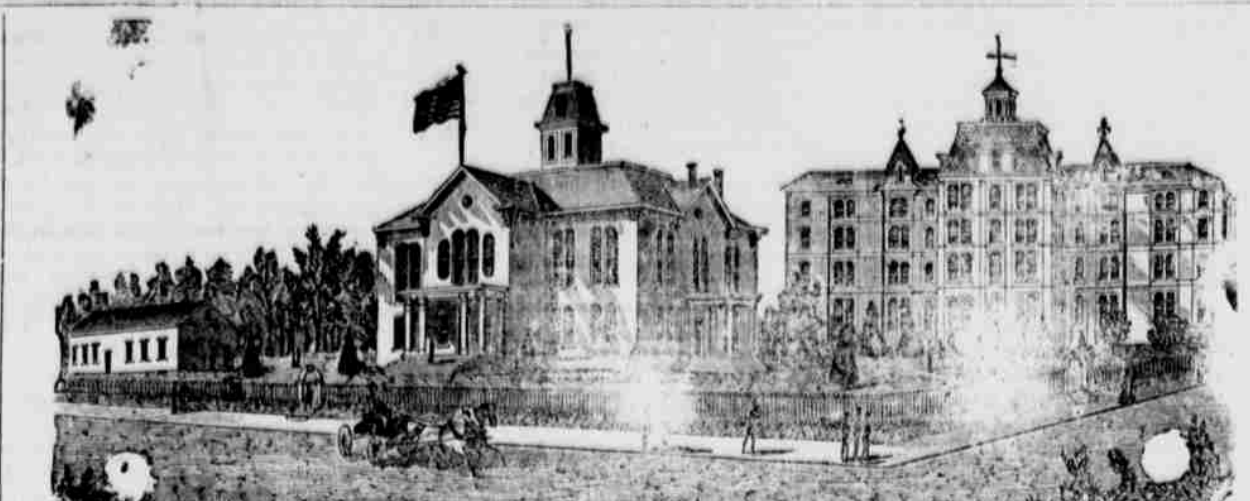
NEW DAVIS VERTICAL FEED. Will do without basting.

STRONG COMPETITION. In the manufacture of Organs is resulting in the production and sale of cheap goods, made from inferior materials.

J. SALTZER, Gen'l Agent, Bloomsburg, Pa.

NEW HIGH BLOOD! Agents wanted everywhere to sell this medicine.

LEGAL BLANKS. ALWAYS ON HAND AT THIS OFFICE.



BLOOMSBURG STATE NORMAL SCHOOL. SIXTH NORMAL SCHOOL DISTRICT, Bloomsburg, Columbia County, Pennsylvania.

Rev. D. J. WALLER, Jr., Ph. D., Principal.

THIS SCHOOL, as at present constituted, offers the very best facilities for Professional and Classical learning.

HOW? WHAT! WHERE? WHY! THE WHITE SEWING MACHINE. One of the problems of Good and Comfortable Living.

MATTER OF CLOTHING. STYLEISH, WELL MADE CLOTHING AT THE VERY LOWEST PRICES.

DAVID LOWENBERG'S Merchant Tailor & Gents' Outfitter. Perfect Fits, Latest Styles, Full Satisfaction.

DAVID LOWENBERG'S Merchant Tailor & Gents' Outfitter. Perfect Fits, Latest Styles, Full Satisfaction.

DAVID LOWENBERG'S Merchant Tailor & Gents' Outfitter. Perfect Fits, Latest Styles, Full Satisfaction.

DAVID LOWENBERG'S Merchant Tailor & Gents' Outfitter. Perfect Fits, Latest Styles, Full Satisfaction.

DAVID LOWENBERG'S Merchant Tailor & Gents' Outfitter. Perfect Fits, Latest Styles, Full Satisfaction.

DAVID LOWENBERG'S Merchant Tailor & Gents' Outfitter. Perfect Fits, Latest Styles, Full Satisfaction.

DAVID LOWENBERG'S Merchant Tailor & Gents' Outfitter. Perfect Fits, Latest Styles, Full Satisfaction.

DAVID LOWENBERG'S Merchant Tailor & Gents' Outfitter. Perfect Fits, Latest Styles, Full Satisfaction.

DAVID LOWENBERG'S Merchant Tailor & Gents' Outfitter. Perfect Fits, Latest Styles, Full Satisfaction.

DAVID LOWENBERG'S Merchant Tailor & Gents' Outfitter. Perfect Fits, Latest Styles, Full Satisfaction.

RAIL ROAD TIME TABLE.

PENNSYLVANIA RAILROAD, PHILADELPHIA & BALTIMORE DIVISION.

WINTER TIME TABLE. On and after Monday, Dec. 11, 1901, the train on the Philadelphia & Erie Road Division will run as follows:

WESTWARD. Erie Mail leaves Philadelphia 11:10 a.m. Harrisburg 11:45 a.m. York 12:15 p.m. Lancaster 12:45 p.m. Gettysburg 1:15 p.m. Carlisle 1:45 p.m. Altoona 2:15 p.m. Scranton 2:45 p.m. Binghamton 3:15 p.m. Elmira 3:45 p.m. Buffalo 4:15 p.m. Niagara Falls 4:45 p.m.

EASTWARD. Erie Mail leaves Buffalo 4:45 p.m. Niagara Falls 5:15 p.m. Buffalo 5:45 p.m. Elmira 6:15 p.m. Binghamton 6:45 p.m. Scranton 7:15 p.m. Altoona 7:45 p.m. Carlisle 8:15 p.m. Gettysburg 8:45 p.m. Lancaster 9:15 p.m. York 9:45 p.m. Harrisburg 10:15 p.m. Philadelphia 10:45 p.m.

PHILADELPHIA AND READING RAILROAD ARRANGEMENT OF PASSENGER TRAINS.

PHILADELPHIA AND READING RAILROAD ARRANGEMENT OF PASSENGER TRAINS.

PHILADELPHIA AND READING RAILROAD ARRANGEMENT OF PASSENGER TRAINS.

PHILADELPHIA AND READING RAILROAD ARRANGEMENT OF PASSENGER TRAINS.

PHILADELPHIA AND READING RAILROAD ARRANGEMENT OF PASSENGER TRAINS.

PHILADELPHIA AND READING RAILROAD ARRANGEMENT OF PASSENGER TRAINS.

PHILADELPHIA AND READING RAILROAD ARRANGEMENT OF PASSENGER TRAINS.

PHILADELPHIA AND READING RAILROAD ARRANGEMENT OF PASSENGER TRAINS.

PHILADELPHIA AND READING RAILROAD ARRANGEMENT OF PASSENGER TRAINS.

PHILADELPHIA AND READING RAILROAD ARRANGEMENT OF PASSENGER TRAINS.

PHILADELPHIA AND READING RAILROAD ARRANGEMENT OF PASSENGER TRAINS.