

Corn in Ninety Days.

There is scarcely any growth in the middle and northern states more wonderful than that of Indian corn. It does not ordinarily have a fair start before June or the first of July, but when the warm weather actually commences, it grows with remarkable rapidity, five, seven, and even ten feet in height within six weeks. This is preparatory to the formation and ripening of the seed, which consumes three or four weeks. The corn grows with such rapidity when hot nights succeed hot days, that the crackling of the leaves as they open may be heard in a quiet time. A correspondent of the Country Gentleman, writing from Illinois gives the following account of a crop which was perfect in ninety days. "Referring to a patch of corn planted June 17th, where late sown on the 29th of May had failed, I expressed confidence of a crop in spite of the late seeding and the extreme drought. Yesterday (September 12th) it became necessary to cut the corn up and remove it, in order to afford pasture for some cows. I was surprised at the maturity attained and the size of the ears, considering only ninety days had elapsed between seeding and harvest. The total rain-fall since planting had not exceeded two inches. Though by no means ripe and dry, the ears are so mature that the corn might be cut up and put in shocks. There is no shrinkage, and without serious damage to the fodder, if the weather continues dry. The peculiarities in the plants grown in so short a time are, I observe, that the stalks are short and stout; the spaces between the joints are less than usual; the leaves are broad, numerous, and fall from the bottom; the cobs are comparatively near the ground, and the fodder is apparently as much relieved by milch cows as is sweet corn. They eat it wholly up. In this experiment, in a dry season, leached, hard-wood ashes have proved to be as valuable in increasing the foliage, and therefore the ears of corn, as in the wet season of 1877, when an experimental ear treated to wood ashes at the same stage of growth, yielded 85 bushels of dry corn, against other ears which were furnished barnyard manure, and returned not above 45 bushels.

All Alike to the Farmers.

It is usually believed that farmers grumble, no matter what the seasons may bring, but judging from the following extract from the Financial Chronicle, it would seem that years of abundant prosperity and of comparative slackness are alike profitable. That journal says: "The drought in the summer and fall of 1881 was one of the longest and most widely extended that the country had ever experienced, and this together with the preceding winter of extraordinary severity, caused a falling off in the crops of wheat and corn and of all dairy products, producing a scarcity in supplies and leading to an advance in prices which materially increased the cost of living. But to the farmer who marketed his crops in the fall of 1881 the actual profits must have been quite as large as on the more abundant yield of 1880, and taking the whole crop of wheat and corn, as estimated by the Agricultural Bureau, we would have the following approximate values on the average prices ruling in New York between Sept. 1 and Dec. 1 in each year. Wheat, 1880, \$20,000,000 bushels, at \$1.13 per bushel, \$22,600,000; 1881, 400,000,000 bushels, at \$1.45 per bushel, \$580,000,000; corn, 1880, 1,720,000,000 bushels, at 55c per bushel, \$946,000,000; 1881, 1,290,000,000 bushels, at 72c per bushel, \$928,800,000. Probably, after all, since more labor is required in harvesting and transferring the superabundant crops, the slack years are really the more useful to the agriculturist. At any rate the farmer in this country who is industrious and frugal, will never have any cause to grumble over the returns that he gets for his labor.

Useful to Know.

MINOR PIES.—One pound and a half each of raisins, currants, apples and suet; chop the suet fine, stone the raisins, wash and pick the currants, peel and core the apples before weighing them, then chop fine shred half a pound of citron, one and a half pounds of round of lean veal or beef boiled in salt and water, then finely chopped; half a pound of sweet and two ounces of bitter almonds blanched and pounded with a gill of rose water, the very thinnest grated rind of three lemons, and their juice; a pound and a half of sugar, two grated nutmegs, a teaspoonful each of powdered allspice, a saltspoonful each of powdered mace and cloves, a teaspoonful of salt, a pint of brandy, and cider enough to moisten properly. It improves with age when kept in a cool place.

OSTREA SALATA.—One quart of oysters, one pint of celery, one third of a cupful of mayonnaise dressing, three tablespoonfuls of vinegar, one of oil, half a teaspoonful of salt, one-eighth of a teaspoonful of pepper, one tablespoonful of lemon juice. Let the oysters come to a boil in their own liquor. Skim well, and drain. Season them with the oil, salt, pepper, vinegar and lemon juice. When cold put in the ice chest for two hours. Scrape and wash the whitest, tenderest part of the celery, and with a sharp knife cut in very thin slices. Put in a bowl with a large lump of ice, and set in the ice chest until serving time. When ready to serve drain the oysters and mix with the oysters and half of the dressing. Arrange in the dish, pour the remainder of the dressing over and garnish with white celery leaves.

MOCK TURTLE SOUP.—Skin a calf's head and boil in a saucepan until tender, which will require about three hours. Next boil the head by itself separately for three hours with a knuckle of ham, a knuckle of veal, two carrots, two turnips, six onions, one dozen pepper corns, one dozen cloves, one dozen allspice, six blades of mace, and six bay-leaves. Next strain through a sieve into a pan. On the following day cut the calf's head into squares, and put it on a table cloth, to boil, adding pepper and salt. Pour the "stock," when done, into cans of one or two quarts capacity, and put a little clean hot fat over it to preserve it. When about to use the "stock" for fresh soup, remove this top fat and boil in a saucepan, adding stock or water as necessary, and pepper and salt to taste.

A Few Hints.

Stoves blackened when entirely cold will keep the clean look a very great deal longer than when they are polished when the stove is warm. Zinc can be brightened by rubbing it with kerosene oil, but it is much better to have it painted, as this will save much labor. After you have swept your carpets quite clean, you may brighten them with a flannel cloth wrung out from beef's gall and water. White paint may be cleaned as well as windows, by using whitening and water, while grained woodwork should be wiped with a flannel cloth, washed out of cold tea. Wash pantry shelves with hot alum and water to rid them of ants, water-bugs and other troublesome insects.

Wanted Farmers & Dealers to Know

Baugh's \$25 Phosphate AT \$25 PER TON OF 2000 POUNDS. Raw BONE AMMONIATED SUPER-PHOSPHATE. Address, BAUGH & SONS, Sole Manufacturers, PHILADELPHIA and BALTIMORE.

Wanted Farmers & Dealers to Know

Baugh's \$25 Phosphate AT \$25 PER TON OF 2000 POUNDS. Raw BONE AMMONIATED SUPER-PHOSPHATE. Address, BAUGH & SONS, Sole Manufacturers, PHILADELPHIA and BALTIMORE.

Wanted Farmers & Dealers to Know

Baugh's \$25 Phosphate AT \$25 PER TON OF 2000 POUNDS. Raw BONE AMMONIATED SUPER-PHOSPHATE. Address, BAUGH & SONS, Sole Manufacturers, PHILADELPHIA and BALTIMORE.

Wanted Farmers & Dealers to Know

Baugh's \$25 Phosphate AT \$25 PER TON OF 2000 POUNDS. Raw BONE AMMONIATED SUPER-PHOSPHATE. Address, BAUGH & SONS, Sole Manufacturers, PHILADELPHIA and BALTIMORE.

Wanted Farmers & Dealers to Know

Baugh's \$25 Phosphate AT \$25 PER TON OF 2000 POUNDS. Raw BONE AMMONIATED SUPER-PHOSPHATE. Address, BAUGH & SONS, Sole Manufacturers, PHILADELPHIA and BALTIMORE.

Wanted Farmers & Dealers to Know

Baugh's \$25 Phosphate AT \$25 PER TON OF 2000 POUNDS. Raw BONE AMMONIATED SUPER-PHOSPHATE. Address, BAUGH & SONS, Sole Manufacturers, PHILADELPHIA and BALTIMORE.

Wanted Farmers & Dealers to Know

Baugh's \$25 Phosphate AT \$25 PER TON OF 2000 POUNDS. Raw BONE AMMONIATED SUPER-PHOSPHATE. Address, BAUGH & SONS, Sole Manufacturers, PHILADELPHIA and BALTIMORE.

Wanted Farmers & Dealers to Know

Baugh's \$25 Phosphate AT \$25 PER TON OF 2000 POUNDS. Raw BONE AMMONIATED SUPER-PHOSPHATE. Address, BAUGH & SONS, Sole Manufacturers, PHILADELPHIA and BALTIMORE.

Wanted Farmers & Dealers to Know

Baugh's \$25 Phosphate AT \$25 PER TON OF 2000 POUNDS. Raw BONE AMMONIATED SUPER-PHOSPHATE. Address, BAUGH & SONS, Sole Manufacturers, PHILADELPHIA and BALTIMORE.

Book Binding - J. W. RAEDER, 110 WEST MARKET STREET, WILKES-BARRE PA.

W. H. CARTER, CONTRACTOR & BUILDER, DRAWINGS AND SPECIFICATIONS FOR BUILDINGS, FURNISHED.

Wanted Farmers & Dealers to Know - Baugh's \$25 Phosphate AT \$25 PER TON OF 2000 POUNDS.

Wanted Farmers & Dealers to Know - Baugh's \$25 Phosphate AT \$25 PER TON OF 2000 POUNDS.

Wanted Farmers & Dealers to Know - Baugh's \$25 Phosphate AT \$25 PER TON OF 2000 POUNDS.

Wanted Farmers & Dealers to Know - Baugh's \$25 Phosphate AT \$25 PER TON OF 2000 POUNDS.

Wanted Farmers & Dealers to Know - Baugh's \$25 Phosphate AT \$25 PER TON OF 2000 POUNDS.

Wanted Farmers & Dealers to Know - Baugh's \$25 Phosphate AT \$25 PER TON OF 2000 POUNDS.

Wanted Farmers & Dealers to Know - Baugh's \$25 Phosphate AT \$25 PER TON OF 2000 POUNDS.

Wanted Farmers & Dealers to Know - Baugh's \$25 Phosphate AT \$25 PER TON OF 2000 POUNDS.

Book Binding - J. W. RAEDER, 110 WEST MARKET STREET, WILKES-BARRE PA.

W. H. CARTER, CONTRACTOR & BUILDER, DRAWINGS AND SPECIFICATIONS FOR BUILDINGS, FURNISHED.

Wanted Farmers & Dealers to Know - Baugh's \$25 Phosphate AT \$25 PER TON OF 2000 POUNDS.

Wanted Farmers & Dealers to Know - Baugh's \$25 Phosphate AT \$25 PER TON OF 2000 POUNDS.

Wanted Farmers & Dealers to Know - Baugh's \$25 Phosphate AT \$25 PER TON OF 2000 POUNDS.

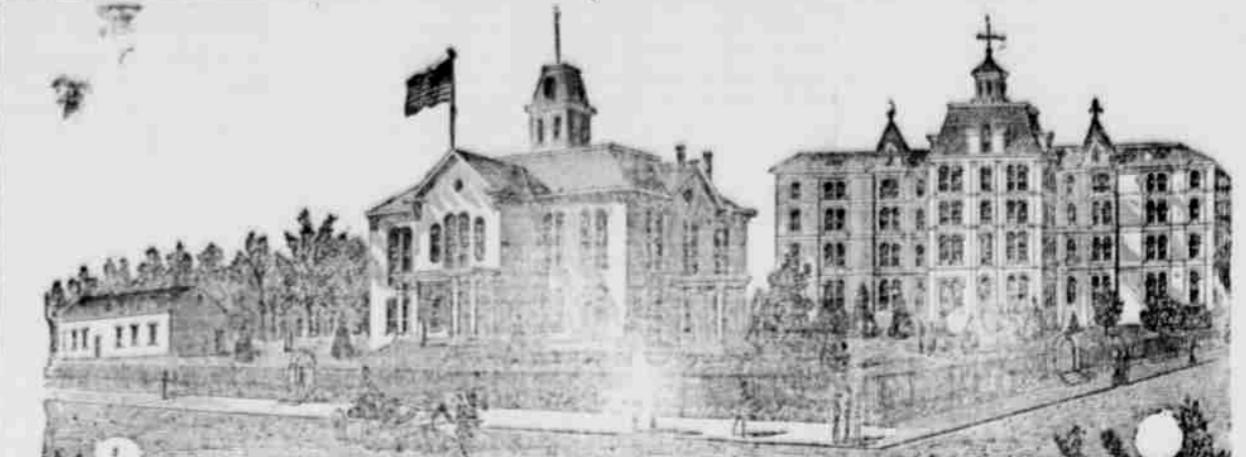
Wanted Farmers & Dealers to Know - Baugh's \$25 Phosphate AT \$25 PER TON OF 2000 POUNDS.

Wanted Farmers & Dealers to Know - Baugh's \$25 Phosphate AT \$25 PER TON OF 2000 POUNDS.

Wanted Farmers & Dealers to Know - Baugh's \$25 Phosphate AT \$25 PER TON OF 2000 POUNDS.

Wanted Farmers & Dealers to Know - Baugh's \$25 Phosphate AT \$25 PER TON OF 2000 POUNDS.

Wanted Farmers & Dealers to Know - Baugh's \$25 Phosphate AT \$25 PER TON OF 2000 POUNDS.



BLOOMSBURG STATE NORMAL SCHOOL, SIXTH NORMAL SCHOOL DISTRICT, Bloomsburg, Columbia County, Pennsylvania. Rev. D. J. WALLER, Jr., Ph. D., Principal.

HOW? WHAT! WHERE? WHY! THE WHITE SEWING MACHINE. One of the problems of Good and Comfortable Living - IS THE - MATTER OF CLOTHING.

MERCHANT TAILORING DEPARTMENT. Perfect Fits, Latest Styles, Full Satisfaction. CALL AND EXAMINE THE LARGEST STOCK OF CLOTHING and CASSIMERES IN THE COUNTY.

DAUCHY & CO'S ADVT'S. SOUTH BOOKS ON BUILDING. DAUCHY & CO'S ADVT'S. SOUTH BOOKS ON BUILDING.

DAUCHY & CO'S ADVT'S. SOUTH BOOKS ON BUILDING. DAUCHY & CO'S ADVT'S. SOUTH BOOKS ON BUILDING.

DAUCHY & CO'S ADVT'S. SOUTH BOOKS ON BUILDING. DAUCHY & CO'S ADVT'S. SOUTH BOOKS ON BUILDING.

DAUCHY & CO'S ADVT'S. SOUTH BOOKS ON BUILDING. DAUCHY & CO'S ADVT'S. SOUTH BOOKS ON BUILDING.

DAUCHY & CO'S ADVT'S. SOUTH BOOKS ON BUILDING. DAUCHY & CO'S ADVT'S. SOUTH BOOKS ON BUILDING.

DAUCHY & CO'S ADVT'S. SOUTH BOOKS ON BUILDING. DAUCHY & CO'S ADVT'S. SOUTH BOOKS ON BUILDING.

RAIL ROAD TIME TABLE. PENNSYLVANIA RAILROAD. PHILADELPHIA & BALTIMORE DIVISION. WINTER TIME TABLE.

RAIL ROAD TIME TABLE. PENNSYLVANIA RAILROAD. PHILADELPHIA & BALTIMORE DIVISION. WINTER TIME TABLE.

RAIL ROAD TIME TABLE. PENNSYLVANIA RAILROAD. PHILADELPHIA & BALTIMORE DIVISION. WINTER TIME TABLE.

RAIL ROAD TIME TABLE. PENNSYLVANIA RAILROAD. PHILADELPHIA & BALTIMORE DIVISION. WINTER TIME TABLE.

RAIL ROAD TIME TABLE. PENNSYLVANIA RAILROAD. PHILADELPHIA & BALTIMORE DIVISION. WINTER TIME TABLE.

RAIL ROAD TIME TABLE. PENNSYLVANIA RAILROAD. PHILADELPHIA & BALTIMORE DIVISION. WINTER TIME TABLE.

RAIL ROAD TIME TABLE. PENNSYLVANIA RAILROAD. PHILADELPHIA & BALTIMORE DIVISION. WINTER TIME TABLE.

RAIL ROAD TIME TABLE. PENNSYLVANIA RAILROAD. PHILADELPHIA & BALTIMORE DIVISION. WINTER TIME TABLE.

RAIL ROAD TIME TABLE. PENNSYLVANIA RAILROAD. PHILADELPHIA & BALTIMORE DIVISION. WINTER TIME TABLE.

RAIL ROAD TIME TABLE. PENNSYLVANIA RAILROAD. PHILADELPHIA & BALTIMORE DIVISION. WINTER TIME TABLE.