

The Farm laborer. Many farmers, especially those somewhat advanced in years, contend that the time was when there was no difficulty in getting hands to work whenever they were needed; but of later years this has not been the case. Men, they say, needing work, would sooner go round as tramps than to get out with nothing to do, than to go out to the country to our farms, where they are needed, and do an honest day's work. We hardly think that things are so bad as this. There never was any difficulty in getting permanent hands, nor is there much now. The trouble is to get men for a few weeks only, as temporary or extra help; and in this there always was trouble, and there always will be.

Odd Items. We do not believe in medicine for children, but we do believe in Dr. Bull's Family Syrup and assert that his family should be without it. The early cold catches the worm. Robinson Crusoe's fiddle never bothered the man near his door. Hold on to what you have, rather than reach for what you cannot get. Appetite, Flesh Color, Strength and Vigor—if you covet those, take Ayer's Sarsaparilla, which will confer them upon you in rapid succession.

MRS. LYDIA E. PINKHAM, OF LYNN, MASS.

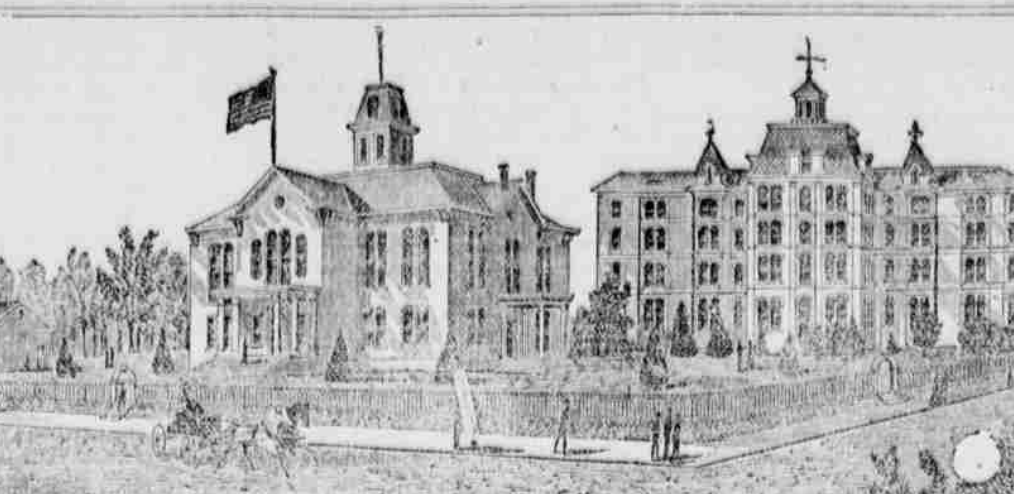


For all Female Complaints. The preparation, as it has been, contains of Vegetable Preparation that is hard to find in the most delicate of the blood, and is therefore, it is believed, the most perfect. It is not a medicine, but a blood purifier, and it is not a cathartic, but a blood purifier. It is a blood purifier, and it is not a cathartic. It is a blood purifier, and it is not a cathartic.

JUST OUT. MORRIS & IRELAND'S NEW IMPROVED EIGHT FLANGE FIRE-PROOF SAFE.



THE ONLY EIGHT FLANGE SAFE MADE IN THE WORLD. AND CONTAINING OUR PATENT INSIDE BOLT WORK, PATENT HINGED CAP, FOUR-WHEEL LOCKS, INSIDE IRON LININGS, SOLID IRON CORNERS. LATEST FROM MAINE.



BLOOMSBURG STATE NORMAL SCHOOL SIXTH NORMAL SCHOOL DISTRICT. Bloomsburg, Columbia County, Pennsylvania. Rev. D. J. WALLER, Jr., Ph. D., Principal. THIS SCHOOL, as at present constituted, offers the very best facilities for professional and classical training.

THE NICOLS SHEPARD & CO. BATTLE CREEK, MICHIGAN. VIBRATOR THRESHERS, TRACTION AND PLAIN ENGINES AND HORSE-POWERS. 32 YEARS' EXPERIENCE. SPECIAL POWER SEPARATORS AND COMPLETE STEAM OR GASOLINE TRACTORS.

RAIL ROAD TIME TABLES

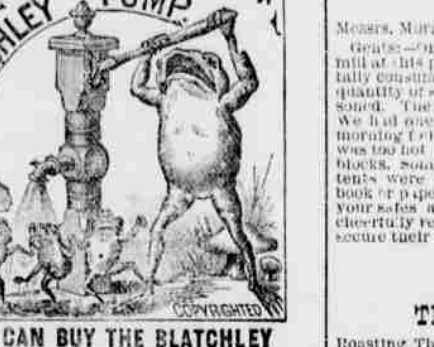
Table with columns for 'NORTHERN CENTRAL RAILWAY' and 'WINTER TIME TABLE'. It lists routes like Philadelphia, Harrisburg, and Baltimore with corresponding times.

The craze over the Hungarian Grass. A new mania for the so-called 'Hungarian Grass' has sprung up. It is a grass that is said to be superior to all other grasses in its quality and quantity.

One of the greatest trials in a young lady's life is when she tries to get a half gallon foot into a quart shoe. This is a trial that is not only a physical one, but also a mental one.

When you kiss a Boston girl she holds still until you are through, when she then says: 'I think you should be ashamed.' This is a saying that is well known in Boston.

The blossoms on the trees indicate the spring, but the blossom on a man's nose denotes the fall. A cloud about the size of a one-dollar note has risen upon the brow of the young man, indicative of coming ice cream.



YOU CAN BUY THE BLATCHLEY PUMP. Each one is built with the same care and skill as the others.

STILL AHEAD. Messrs. Morris & Ireland, 120 N. Second St., Philadelphia, Pa. The machine is a perfect one, and it is the only one of its kind.

Florestone Cologne. Messrs. Morris & Ireland, 120 N. Second St., Philadelphia, Pa. This cologne is made of the finest flowers and is of a most delicate and fragrant odor.

THE GREAT BOSTON FIRE. On January 1, 1880, a great fire broke out in Boston. The fire was caused by a defective chimney, and it destroyed a large part of the city.

NEVER INTOXICATED. Messrs. Morris & Ireland, 120 N. Second St., Philadelphia, Pa. This medicine is made of natural ingredients and is of a most powerful effect.

THE LATEST YET. Messrs. Morris & Ireland, 120 N. Second St., Philadelphia, Pa. This is the latest invention in the world, and it is of a most useful nature.

OPPIUM. Messrs. Morris & Ireland, 120 N. Second St., Philadelphia, Pa. This is a medicine that is made of opium, and it is of a most powerful effect.

NEW RICH BLOOD. Messrs. Morris & Ireland, 120 N. Second St., Philadelphia, Pa. This medicine is made of natural ingredients and is of a most powerful effect.

AGENTS WANTED EVERYWHERE. Messrs. Morris & Ireland, 120 N. Second St., Philadelphia, Pa. We are looking for agents in all parts of the world.

THE LATEST YET. Messrs. Morris & Ireland, 120 N. Second St., Philadelphia, Pa. This is the latest invention in the world, and it is of a most useful nature.

THE GREAT BOSTON FIRE. On January 1, 1880, a great fire broke out in Boston. The fire was caused by a defective chimney, and it destroyed a large part of the city.

NEVER INTOXICATED. Messrs. Morris & Ireland, 120 N. Second St., Philadelphia, Pa. This medicine is made of natural ingredients and is of a most powerful effect.

THE LATEST YET. Messrs. Morris & Ireland, 120 N. Second St., Philadelphia, Pa. This is the latest invention in the world, and it is of a most useful nature.

AGENTS WANTED EVERYWHERE. Messrs. Morris & Ireland, 120 N. Second St., Philadelphia, Pa. We are looking for agents in all parts of the world.

THE DAVIS. SPEER'S PORT GRAPE WINE. Four Years Old. This wine is made from the best grapes and is of a most delicate and fragrant odor.

SPEER'S P. J. Brandy. This brandy is made of natural ingredients and is of a most powerful effect.

DAUCHY & CO.'S ADVT'S. This is an advertisement for Dauchy & Co.'s products, which are of a most useful nature.

SUPERIOR TO ALL OTHERS. PIANOS. These pianos are made of the finest materials and are of a most powerful effect.

THE GREAT BULLINGTON ROUTE. This route is the best one in the world, and it is of a most useful nature.

CANCERS CURED. This is a medicine that is made of natural ingredients and is of a most powerful effect.

WEAVER & CO'S ADS. This is an advertisement for Weaver & Co.'s products, which are of a most useful nature.

HELP. This is an advertisement for help, which is of a most useful nature.