

Miscellaneous.

A Hungarian City Under Water.

Calamity which Hungary has long considered peculiarly liable has over-

At the latest accounts the water had risen

five feet more, and the situation was becoming more and more critical.

FEED A LITTLE CORN MEAL.

It is a common saying that it makes no difference what you feed to your milk cow.

SEED CORN AND CORN RAISING.

The selection of seed corn has much to do with the yield of the corn field.

There is something more required of seed corn than that every kernel shall germinate.

The "BADAD" DATE MARK.—Recent travelers in Asiatic Turkey mention the "BADAD" date mark.

Horses should be watered in the morning before they are fed.

New Horse Shoe.—A cow hide horse shoe has been introduced, which promises to be very useful.

A correspondent in the Rural World shows some points of difference between British and American methods of feeding stock.

CUSTARD.—Beat six yolks and four whites until very light; add a quart and a scant pint of rich milk.

PICKLED EGGS.—Boil the eggs until very hard; take off the shells; have prepared some nice spiced vinegar.

At Peth acute measures were taken to send assistance to the afflicted city.

GILES' LINIMENT IODIDE AMMONIA.



Cures all Pain in Man and Beast

TESTIMONIALS: PHLEGMIC UTERI (Pain of the Womb). A Wonderful Cure. Mrs. J. W. ...

IN MY FAMILY, and for the stock, I have used GILES' LINIMENT IODIDE AMMONIA.

Superintendent Eastern Pennsylvania Agricultural Fair.

THE "LITTLE GIANT" CATHARTIC. No one taking the large, repulsive, nauseous pills, known as "Cathartics," should neglect this.

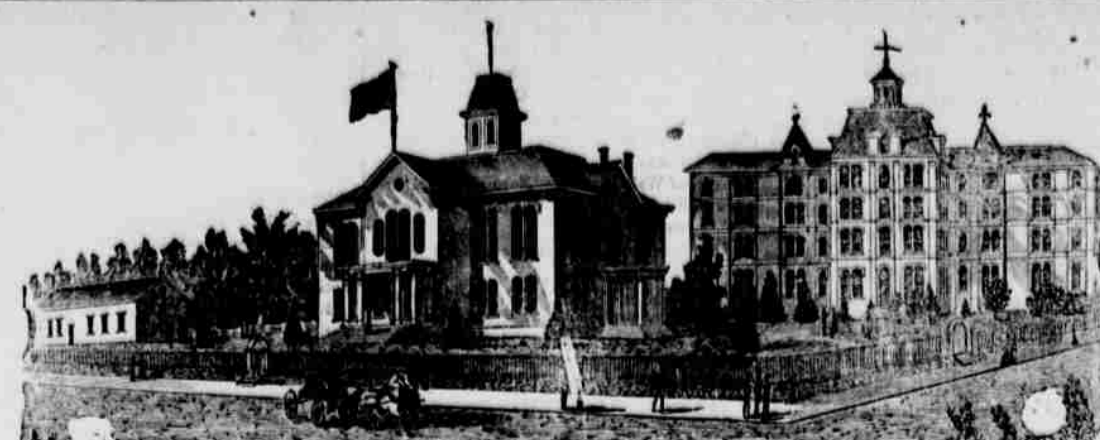
DR. SAGE'S CATARRH REMEDY. It is a powerful and reliable remedy for all cases of Catarrh of the Bladder, Uterus, etc.

ADMINISTRATOR'S NOTICE. Letters of administration on the estate of William White, deceased.

THE RED FRONT, MOYERS' BLOCK, HARTMAN BROS., DEALERS IN TEAS, CANNED FRUIT, CIGARS, TOBACCO, CONFECTIONERY.

FINE GROCERIES, Foreign and Domestic Fruits, AND GENERAL LINE OF Family Provisions.

WAINWRIGHT & CO., WHOLESALE GROCERS, PHILADELPHIA, DEALERS IN TEAS, SYRUPS, COFFEE, SUGAR, MOLASSES, RICE, SPICES, BEANS, ETC., AND ALL KINDS OF FINE GROCERIES.



BLOOMSBURG STATE NORMAL SCHOOL SIXTH NORMAL SCHOOL DISTRICT.

Bloomsburg, Columbia County, Pennsylvania. Rev. D. J. WALLER, Jr., A. M., Principal.

THIS SCHOOL, as previously constituted, offers the very best facilities for Professional and Classical Learning.

THE BARGAINS! BARGAINS! CALL AND SEE THE CHEAPEST AND BEST CLOTHING IN BLOOMSBURG.

Mens' Overcoats from \$4.50. Mens' Suits from \$6.00. Good Working Pants 90 cents. Good Wool Hats for 75 cents.

Winter Caps from 40 cents. Boys' Caps from 25cents. Good Working Shirts 50 cents. Mens' Vests from 50 cents. Good White Shirts, linen fronts 65 cents. Mens' Socks, 3 pairs for 25 cents.

CALL AND SEE FOR YOURSELVES THE BARGAINS NOW SELLING At the Popular Store of DAVID LOWENBERG

THE ORIGINAL & ONLY GENUINE "Vibrator" Thrashers, MOUNTED HORSE POWERS, AND STEAM TRACTORS, Made only by NICHOLS, SHEPARD & CO., BATTLE CREEK, MICH.

THE PATENT REJECTED INVENTORS. Obtained for new inventions, or for improvements on old ones, for which no other compounds, treatments and labels, Carriage, Automobile, Automobile, etc.

M. C. SLOAN & BRO. Manufacturers of Carriages, Buggies, Phaetons, Sleighs, PLATFORM WAGONS, etc. First-class workmanship on hand.

PAINTING AND Paper Hanging. WM. F. BODINE. IRON ST., BELOW SECOND, BLOOMSBURG, PA. is prepared to do all kinds of HOUSE PAINTING, Plain and Ornamental, PAPER HANGING, BOTH DECORATIVE AND PLAIN. All kinds of Furniture Repaired, and made as good as new.

WAINWRIGHT & CO., WHOLESALE GROCERS, PHILADELPHIA, DEALERS IN TEAS, SYRUPS, COFFEE, SUGAR, MOLASSES, RICE, SPICES, BEANS, ETC., AND ALL KINDS OF FINE GROCERIES.

The Seaside Library.

Books longer for the 75 given. The best standard novel which has been given.

1. The King, by Captain Murray. 2. The Queen, by Captain Murray. 3. The Duke, by Captain Murray.

101. The Duke of Devonshire, by Florence Murray. 102. The Duke of Devonshire, by Florence Murray.

103. The Duke of Devonshire, by Florence Murray. 104. The Duke of Devonshire, by Florence Murray.

105. The Duke of Devonshire, by Florence Murray. 106. The Duke of Devonshire, by Florence Murray.

107. The Duke of Devonshire, by Florence Murray. 108. The Duke of Devonshire, by Florence Murray.

109. The Duke of Devonshire, by Florence Murray. 110. The Duke of Devonshire, by Florence Murray.

111. The Duke of Devonshire, by Florence Murray. 112. The Duke of Devonshire, by Florence Murray.

113. The Duke of Devonshire, by Florence Murray. 114. The Duke of Devonshire, by Florence Murray.

115. The Duke of Devonshire, by Florence Murray. 116. The Duke of Devonshire, by Florence Murray.

THE WHITE SEWING MACHINE

THE BEST OF ALL. Unrivalled in Appearance, Unsurpassed in Construction, Unprecedented in Popularity, and Undisputed in the Broad Claim.



VERY BEST OPERATING. QUICKEST MENDING. HANDSOME, AND Most Perfect Sewing Machine in the World.

The demand for the White has increased so much that we are now compelled to turn to a Continental Sewing Machine.

Every machine is warranted for 3 years, and sold at a liberal discount, and in the hands of the best mechanics, to suit the convenience of customers.

WHITE SEWING MACHINE CO. 1039 South Ave., Cincinnati, Ohio. J. SALTZER, Agent, BLOOMSBURG, PA.

RAIL ROAD TIME TABLES. NORTHERN CENTRAL RAILWAY. WINTER TIME TABLE.

On and after Sunday, November 18, 1878, the trains on the Philadelphia & Erie Railroad will run as follows:

WESTWARD. Erie Mail leaves Philadelphia 11:30 p.m. Harrisburg 4:45 a.m. Williamsport 7:45 a.m. Pottsville 9:45 a.m. Reading 11:45 a.m. Easton 1:45 p.m. Lancaster 3:45 p.m. York 5:45 p.m. Gettysburg 7:45 p.m. Carlisle 9:45 a.m. Altoona 11:45 a.m. Erie 1:45 p.m.

EASTWARD. Erie Mail leaves Erie 11:30 p.m. Altoona 4:45 a.m. Carlisle 7:45 a.m. Gettysburg 9:45 a.m. York 11:45 a.m. Lancaster 1:45 p.m. Easton 3:45 p.m. Reading 5:45 p.m. Pottsville 7:45 p.m. Williamsport 9:45 a.m. Harrisburg 11:45 a.m. Philadelphia 1:45 p.m.

PARLOR CARS will run between Philadelphia and Williamsport on Niagara Express, West Erie Express, and Sunday Express, stopping cars on all night trains. WM. A. BALDWIN, General Manager.

NORTHERN CENTRAL RAILWAY COMPANY. On and after November 18, 1878, trains will run as follows:

PHILADELPHIA AND HEADQUARTERS ARRANGEMENT OF PASSENGER TRAINS. TRAINS LEAVE PHILADELPHIA FOR NEW YORK, PHILADELPHIA, PITTSBURGH, BALTIMORE, AND WASHINGTON, D. C. For New York, Philadelphia, and Baltimore, leave Philadelphia at 7:15 a.m., 11:45 a.m., and 4:45 p.m. For Washington, D. C., leave Philadelphia at 7:15 a.m., 11:45 a.m., and 4:45 p.m.