

## The Bloom Sale of Pianos, Players and Grands Continues

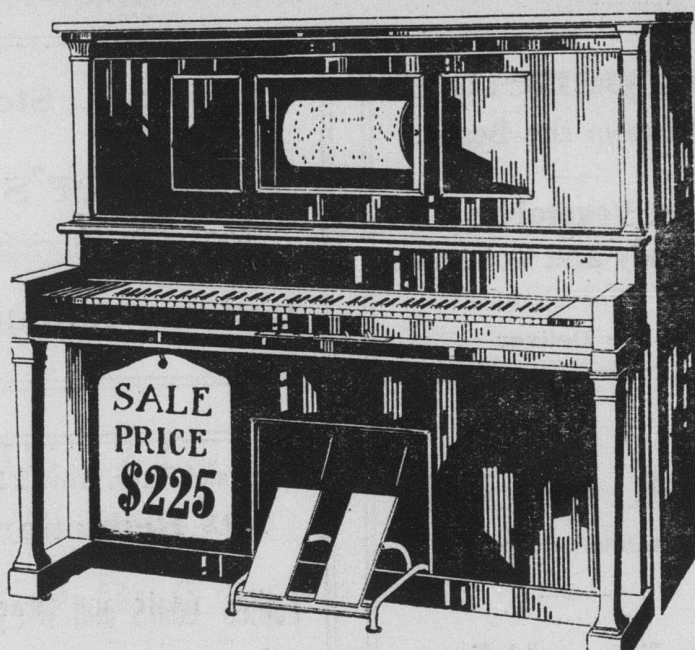
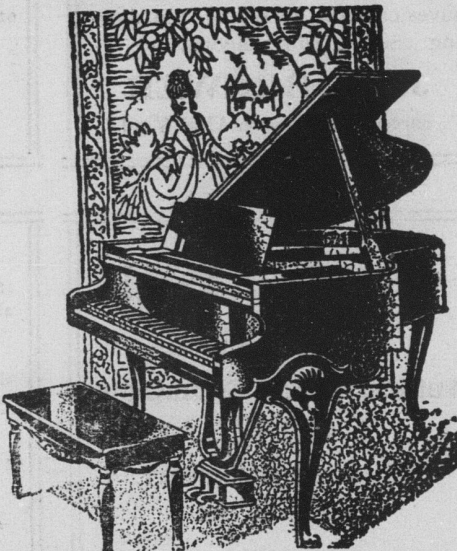
Last week we were busy. People from all points took advantage of the beautiful weather and came here. The shrewd buyers from out of town took advantage of this great money saving event by paying cash for the instrument they selected. Many pianos and players were sold at less than cost. Our sale continues. A vast stock is here to select from. Pianos, Players Pianos, Grand Pianos—all will be sold at some price.

### A SALE OF GRAND PIANOS

We have on hand some new Grand pianos that must be sold at once. These instruments must be moved at the earliest possible moment. We are offering these Grands at very low figures.

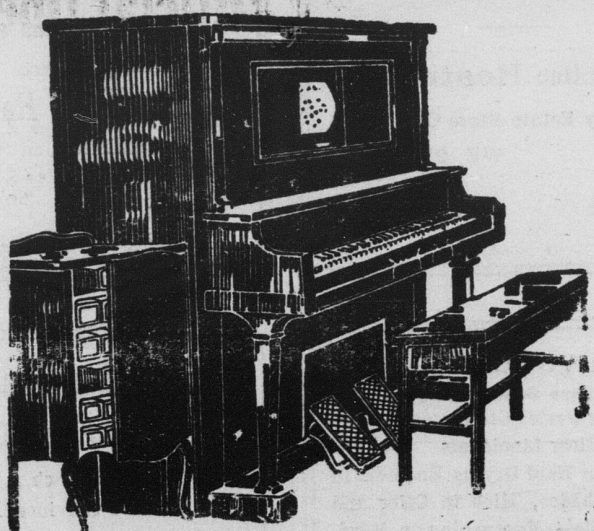
Here is an opportunity to own a real Grand at a fraction of its real value.

Reduced  
**\$240**



### A PLAYER SPECIAL \$225.00

This great overstock of player bargains is being offered for sale at a fraction of their actual worth. A \$10.00 deposit will arrange for delivery on this instrument.



### THIS SPECIAL PLAYER ONLY \$145.00

This Player will be delivered to any home in the city at the above price. It is a very reliable make, and can be paid for as the purchaser pleases. Make your own terms, trade it back on a new instrument at full value within two years. Bench and Rolls included in bargain. Also free delivery.

### A Piano Bargain \$90

Ideal for children or music students to practice on. Can be traded back within one year at full value on a new piano.



### Another Practice Piano

We have a large stock of new, used and shop worn instruments on hand. Any reasonable offer will be accepted. Why wait.

Now  
**\$70**



**BLOOM'S MUSIC STORE**  
WEST HIGH STREET  
OPPOSITE PENN-BELLE HOTEL  
BELLEFONTE, PA.

"All right, mister, . . .  
don't believe  
a word I say-

but

**try AMOCO-GAS"**



It happened in a garage in a small Virginia town, but it could have happened anywhere in the eleven states in which AMOCO-GAS is sold.

A motorist stopped at a pump that happened to be dry. There were three other gases available, but the garage-man suggested AMOCO-GAS.

"No, it costs too much," said the motorist.

"It will save you money in the end and make your car run better than it knows how," said the garage-man.

"Save me money how?"

"More miles to the gallon and by keeping your car out of the shop. I know half-a-dozen cars around here that have gone over 25,000 miles on AMOCO and never had the head off. And when you get on a hill - why, she'll go over the top so fast you'll think you've stolen the car."

"Go on," said the motorist, "I've heard that story before. I've never found a gas yet that could live up to half the claims made for it."

"All right, mister," said the garage-man, "don't believe a word I say, but try AMOCO-GAS."

He's been using AMOCO-GAS ever since. Right now this same motorist is the best advertisement for AMOCO-GAS in the entire county.

The AMERICAN OIL COMPANY  
Affiliated with Pan American Petroleum & Transport Company  
General Office: American Bldg., Baltimore, Md.

LOW COST  
PER MILE  
is what counts



Don't believe  
a word we  
say-but try  
**AMOCO-GAS today**

...and if you want the best gas made at regular price...there's Orange AMERICAN GAS.

### BIRDS NECESSARY FOR TREE LIFE.

Describing birds as health officers of trees and tree planters of a high order, State Forester Joseph S. Illick, of the Pennsylvania Department of Forests and Waters, has called attention to the fact that forest and shade trees, deprived of the assistance of bird life, would be next to impossible.

Birds of many kind comprise the greatest single foe of insect life and the total damage to trees by insect pests runs annually into hundreds of millions of dollars. Wherever unhealthy conditions prevail as the result of insect attacks, birds are sure to discover them and do something toward remedying the situation, the State Forester said.

"Every part of the tree owes something to its feathered little scavengers, the birds," Illick continued. "Woodpeckers, for instance, clamber over the limbs and larger branches, detecting their prey beneath the bark. Creepers and nut-hatches frequent the crevices. Chickadees, titmice and kinglets choose for their hunting grounds the smaller branches, twigs, and buds in their search for small insects and their eggs. Cuckoos, orioles, vireos, and warblers closely examine leaves and prey upon the larvae and sucking insects so abundant there. The insect foes that take to flight are sought after and snapped up by fly catchers, swifts and swallows.

"The greatest bird scavenger of the forest floor is the oven-bird, which turns over fallen leaves and scans the leaf mold on the ground. Here it finds beetles, weevils, caterpillars, ants and other forest insects. The common English sparrow is a persistent foe of the Japanese beetle. "Wherever the food habits of insectivorous birds have been studied their beneficial influence in protecting the trees from insect foes has been demonstrated most effectively. Actual studies have shown that one-third of the food of the hairy woodpecker, consists of the larvae of wood-boring beetles. Ants are its second staple of diet, forming 17 per cent of the total, and include many carpenter ants which hollow out and contribute to the destruction of numerous trees. The downy woodpecker is a great foe of the codling moth, cause of wormy apples, and feeds on the eggs of tent caterpillars.

"If you would help the trees, therefore help the birds, and here are some practical suggestions on how to do it:

"In summer, by supplying suitable bathing and drinking places.

"In autumn, by seeing to it that protective laws are observed during the hunting season.

"In winter, by maintaining feeding stations and protective plantings.

"In spring, by providing nesting materials, putting up bird houses,

and planting trees in which the birds will find, year after year, food, shelter and nesting places."

### TWO KILLED WHEN TRAIN CRASHES TRUCK.

Two persons were instantly killed when the truck which they were driving was struck by a westbound freight train of the Pennsylvania railroad at the Liberty street crossing. The dead are William Welch, Huntingdon, and Miss Annie Fetterly, Lock Haven.

The accident occurred shortly before 6 o'clock as the two were starting for New York.

The impact of the crash which could be heard for a distance of two city blocks, carried the truck a distance of 150 feet, witnesses said. The bodies of both occupants of the truck were found scattered along the railroad tracks by employees of the road and witnesses.

Both bodies were so badly mutilated, according to the county coroner, Dr. J. W. Shoemaker, that it was impossible to tell the ages or much about them.

According to Harold W. Finneity, owner of the truck, the two were going to buy produce in a neighboring State.

Reports from Lock Haven state that no watchman was employed at the crossing, and numerous accidents have occurred at that place within the past several months.

### RENOVO BANKER FOUND SHOT TO DEATH IN BANK.

Edward Bowers, 60 assistant cashier at the Renovo State Bank, was found shot to death in the paying teller's booth at the bank, on Wednesday, and a verdict of death by suicide was made by the coroner.

The body, with a bullet in the head, was found by the janitor when he entered the building at 7:45 o'clock Wednesday morning.

Bowers, who was a bachelor, had been in poor health for some time and this was attributed as the cause for the suicide.

His accounts were satisfactory, bank officials said.

"Mrs. M. C. Levi, who had been quite ill for two weeks or longer, at the home of her daughter, Mrs. Harrison Kline, on east Bishop street, has recovered sufficiently to be up and around the house.

### THAT FAMOUS CRASH

Enough of that Famous Crash to last us at least 3 months direct from the most famous linen people in the country. Ask to see the yd. length of Cretonnes at less than 1/2 price.

GARMANS

### ROADS IN FORESTS OPEN VAST AREAS.

Each year the State forests of Pennsylvania become more accessible with the development of forest roads and trails. This work is being done under the direction of road superintendent R. H. Vought, of the Department of Forests and Waters.

During the present year more than 100 miles of State forest roads have been constructed, all of which can be safely used for automobile traffic. They have opened thousands of acres of forest lands that were inaccessible. At the present there are more than 2200 miles of roads and 2800 miles within the State forests.

Superintendent Vought emphasizes the fact that forest roads and trails are necessary in the protection and management of our State forests, as travel and transportation are important factors in making the forest accessible and profitable.

He cites as an example the Re-

novo-Snow Shoe State forest road in Centre and Clinton counties, which is 21 miles in length and is the only means of access to an area of 200,000 acres of State forest land located between the Susquehanna River on the north and Beech Creek on the south. It is also a connecting link for 13 secondary roads comprising a total of 44 miles. This vast area is one of the best hunting sections of the State and during the open game season is dotted with many hunting camps. This is but one of the several hundred roads that traverse State forest areas, and serve a similar purpose. The State forest roads and trail in addition to being necessary adjuncts in forest management are also extensively used by sportsmen. Direction signs are placed along all forest roads and trails so that there is no danger of becoming lost. During the year more than \$200,000 was spent on the construction and maintenance of roads and trails within the State forests.

### SANTA IS AT GARMAN'S

Santa is busy looking up items for his rounds. He seems to be wonderfully pleased with the Garmans Line. It is most useful and varied and at such reasonable prices.

GARMANS

### AND MORE TOYS

Toy Lamps, Sleds, Go Carts, Black Boards, Airplanes, Tractors, Fire Engines, Trains, Magic Lanterns, Road Rollers, Cement Mixers, Boats, Trench Diggers, Mine Cars, Trailers, Plows, Gas Tanks. In fact every leading Toy made.

GARMANS

### RICHELIEU

Now Showing Friday—Continuous Thanksgiving 2 to 11 p.m.—Walter Huston, Kay Francis and Kenneth MacKenna in "The Virtuous Sin"

Satur., Continuous Show 2 to 11 p.m.—Children 10c to 5 p.m.—Spencer Tracy and Warren Hymer in the

Season's Comedy Hit "Up The River"

Take a trip Up the River—you'll laugh all the way.

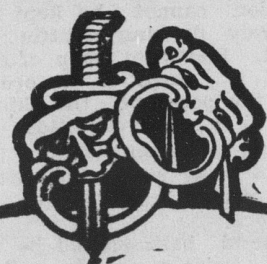
Mon., Tues. and Wed., Next Week—Harold Lloyd with Barbara Kent in

"Feet First"

Everybody laughs with Lloyd! And now he's racing in on a Rocket of Fun and Thrills

Thurs., Friday, Satur., Next Week—Clara Bow in

"Her Wedding Night"



### STATE

Now Playing Friday, Satur., a Radium of Splendor—"Follies and Fashions"—styles of yesterday and today, with Miss Kansas and a company of Bellefonte Singers, Dancers, Models, and the selection of "Miss Fashion, Queen of Bellefonte." Also on the screen, Zane Grey's Masterpiece, with George O'Brien—"Last of the Duanees"

All Next Week at The State Richard Arlen in

"Sante Fe Trail"