

Tomorrow is the date for the continued hearing before referee Lee Francis Lybarger on the question of fees for the attorneys for the State receivers of the Centre County Banking company.

Altoona Booster Merchants Say: We Invite You to Come to Booster Stores for the Needs Your Home Merchants Cannot Supply.

Attend the Special Match Race AT THE Altoona Speedway Saturday October 11

This is a specially arranged match race between Billy Arnold, American Automobile Association Champion and winner of Altoona's Labor Day Classic, and "Deacon" Litz, the DuBois "Speed Star" and "runner up" in the 200 mile Labor Day Classic.

20 Semi-Professional Drivers Will Race

As an additional attraction, races have been arranged between a field of 20 Semi-professional drivers, all of whom will make an effort to hang up a record.

You Can Always Shop With Satisfaction In Altoona Booster Stores

Of utmost importance is the fact that Booster Stores offer unlimited variety from which to make selections in goods of dependable quality and attractive styles.

Every Wednesday IS Suburban Day IN Altoona Booster Stores

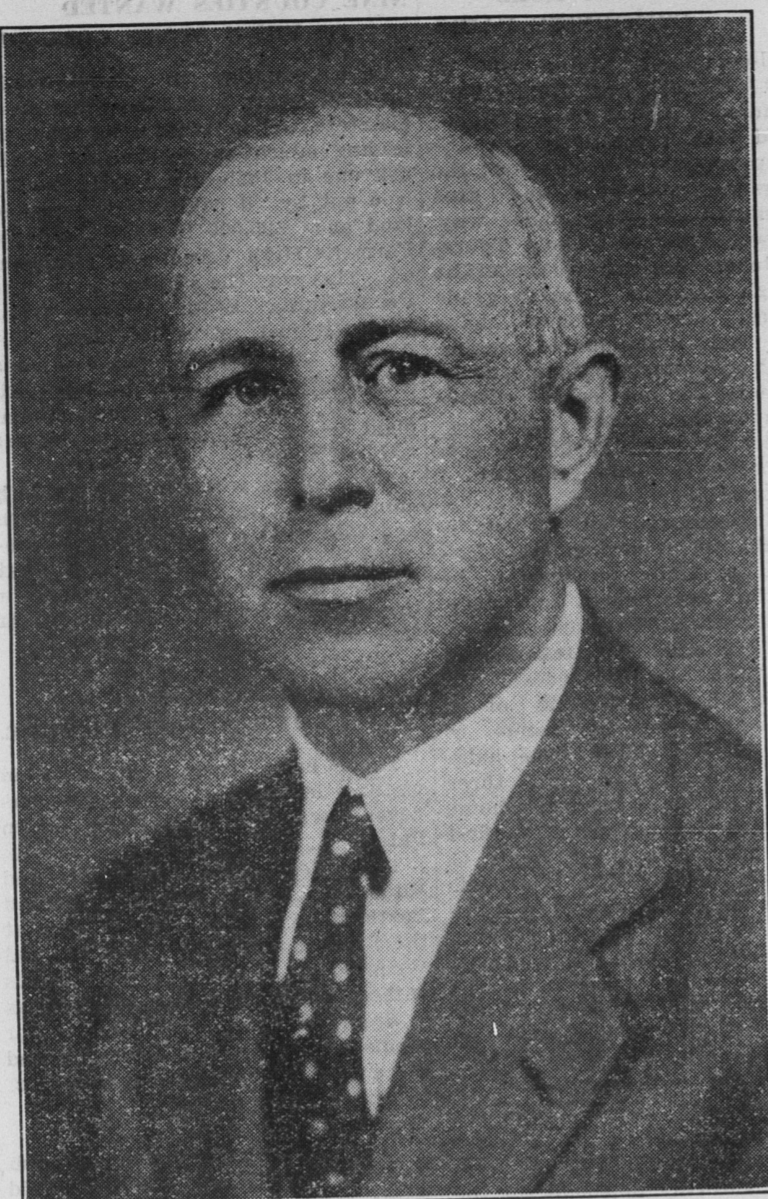
Arrange to shop in Booster Stores each Wednesday and share in the Special Attractions that are always a feature of Suburban Day.

It Is Easy to Park Your Car In Altoona

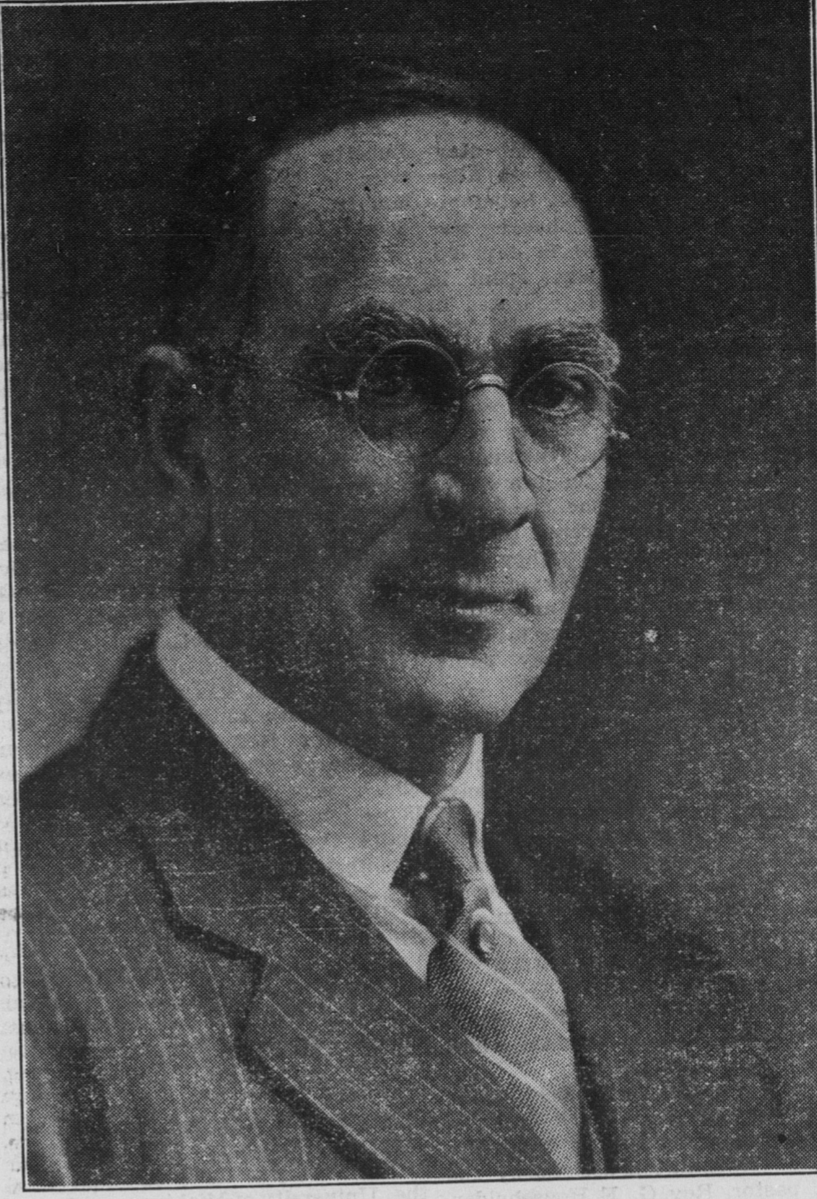
FREE PARKING on all streets with restrictions in certain districts. PARKING UNDER POLICE PROTECTION at the Municipal Parking Space, 10th Avenue between 11th and 12th Streets.

Altoona Booster Association

10,000,000 Women Fear This Woman "Office Wife" with Dorothy Mackaill-Lewis Stone....See her at the Warner....Altoona Starts Friday October 10th



DON GINGERY for State Senator



JOHN G. MILLER for Member of The Assembly

These Men will Vote to Repeal the Obnoxious Tax Law that Scott and Holmes Voted For.

FOR AND ABOUT WOMEN

A man's no bigger than the way He treats his fellowman! This standard has his measure been Since time itself began!

Paris reports show us these things: First—that Paris designers, like American designers, insist on individuality.

Second—Paris reports show that the Parisian silhouette for fall is one of long normal waistline. And that's the favored American silhouette, as you know.

Third—That a Paris costume must have interesting details. And that, too, is an outstanding mark of new fall modes in America.

Fourth—That a Paris costume must have interesting details. And that, too, is an outstanding mark of new fall modes in America.

They're still using lingerie collars and cuffs in Paris as well as America. They're a becoming fashion and designers are taking full advantage of that fact.

Flounces and tiers are still a favorite evening fashion in Paris. Button trimmings on coats and dresses are popular.

There's a new fashion in this country—one you'll see more of as the weather gets colder—that's an important fashion in Paris.

Black is the leading Fall color in Paris—just as it is all over this country. Greens and browns are important, too—just as they are here.

eries, they hang even with the bottom of the skirt. And the smartest 1930 hemlines are much better to look at. Their trimming details are most interesting.

Instead of a plain, straight sleeve, an interesting cuff is put on. Or bows or incrustations may be used. Instead of the plain neckline—a becoming bit of lingerie trimming, a touch of contrasting color, or an interestingly draped collar.

We said that skirts are longer this fall than last. How long? Well, fashionable women settled that question this past spring and summer.

For active sports wear the fashionable length is about two inches below the knees. And for formal evening wear, ankle length—a graceful length that shows the toe of the shoe in front and the heel in back.

Recipe for pickled onions: 4 quarts small white onions; 1 cup salt; 2 quarts vinegar; 2 cups sugar; 1/4 cup mixed pickle slices.

A dozen jars of this Combination Fruit Conserve would add infinitely to the beauty of your pantry shelves: 2 pounds peaches, 1 pound quinces, 1 pound pears, a cup nut meats, 1 pound apples, 2 lemons, sugar.

PENN STATE STARTS ON SEVENTY-FIFTH YEAR

Seventy-fifth anniversary year opened Wednesday at the Pennsylvania State College with a capacity enrollment of over 4200 students welcomed at convocation by president Ralph D. Hetzel.

Three new academic buildings, a new power plant and many improvements in landscaping of the campus combined with the record enrollment to make the record the most important in the history of the college since the first class started in 1859.

Compounding the ration of the laying hen, particular attention should be paid to the inclusion of the necessary vitamins. Yellow corn and green feeds, alfalfa meal, course at Mont Alto on Wednesday.

FARM NOTES.

Every day except Saturdays and Sundays weather reports and timely news items are broadcast from W P S C at the Pennsylvania State College, promptly at 12 o'clock noon.

As a result of the dry weather and its effect on the corn crop, seed corn will be a highly valuable product next spring.

The general business depression has extended to the market for logs and lumber. Prices are low and there is little movement in this line.

Cows need vacations the same as human beings. A rest period of 6 to 8 weeks before freshening, with plenty of good feed, will put the dairy cow in form for her winter's work.

Use of lights has postponed and often entirely eliminated the fall moult in pullet flocks.

It is especially important that late planted wheat be treated with copper carbonate dust to protect it from the ravages of stinking smut.

In considering emergency hay crops for next year it is well to remember that oats, wheat, soybeans, and other crops can be used. Using this year's meadows for hay again next year is another possibility, even if it does upset the rotation.

Spray celery every 10 to 14 days with 4-4-50 bordeaux mixture to control late blight, as the cool fall weather promotes the development of this disease.

A warm poultryhouse that will help to keep egg production high during the winter months must be well ventilated, says Prof. E. R. Gross, agricultural engineer at the New Jersey experiment station, New Brunswick.

To maintain a warm, well-ventilated henhouse three things are needed, advises Professor Gross: Tight walls, doors, and windows; ventilating flues, which may be constructed of wood at a low cost, and limited overhead space.

Alfalfa hay exposed three hours to bright sunlight at Madison, Wisconsin, was not sufficiently supplied with vitamin D to enable cows, giving 40 to 50 pounds milk daily, to keep up the lime content of their systems.

Alfalfa hay exposed three hours to bright sunlight at Madison, Wisconsin, was not sufficiently supplied with vitamin D to enable cows, giving 40 to 50 pounds milk daily, to keep up the lime content of their systems.

alfalfa leaf flour and others. Vitamin D, or its equivalent, is supplied by making use of direct sunshine or by resorting to cod liver oil, the latter being an outstanding source of this most essential substance.

Clean and fresh ground may be made available by moving the house or houses to new ground each year, or by having a regular rotation of sown crops.

Poor pruning of grapes is only one of the factors that affect ripening, but it is a very important one. The leaving of too little fruiting wood will, on the other hand, induce a rank growth of foliage accompanied by a light crop of fruit.

Grinding of any feed does not increase the food value of that feed. A bulky roughage ground to a fine pulp does not make a concentrate out of it.

To let the cost of grinding govern the amount of roughage grinding done; To not feed ground roughage as a concentrate; To grind small grain for dairy cows but not to a meal; and To not grind small grain for baby calves.

Cattle cannot use vitamin D in cod liver oil as demonstrated at the University of Wisconsin. Cows dropped in milk and fat production when the oil was added to the ration and increased production when it was removed.

Alfalfa hay exposed three hours to bright sunlight at Madison, Wisconsin, was not sufficiently supplied with vitamin D to enable cows, giving 40 to 50 pounds milk daily, to keep up the lime content of their systems.

\$4.00 Round Trip PITTSBURGH SUNDAYS October 19, December 14 SPECIAL TRAIN Lv. Bellefonte 2:30 A.M. See Flyers or Consult Agents ALL STEEL EQUIPMENT Pennsylvania Railroad

Lumber At Lower Prices AT W. R. SHOPE BELLEFONTE Phone 432

ATTORNEYS-AT-LAW

SKLINE WOODRING.—Attorney at Law, Bellefonte, Pa. Practices in all courts. Office, room 18 Crider's Exchange. 51-ly

KENNEDY JOHNSTON.—Attorney-at-Law, Bellefonte, Pa. Prompt attention given all legal business entrusted to his care. Offices—No. 5, East High street. 57-44

M. KEICHLINE.—Attorney-at-Law and Justice of the Peace. All professional business will receive prompt attention. Offices on second floor of Temple Court. 49-5-ly

G. RUNKLE.—Attorney-at-Law, Consultation in English and German. Office in Crider's Exchange, Bellefonte, Pa. 58-5

PHYSICIANS

S. Glenn, M. D., Physician and Surgeon. Consultation in English and German. Office at his residence. 55-41

R. R. L. CAPERS, OSTEOPATH. Bellefonte Crider's Ex. 66-11 State College Holmes Bldg

C. D. CASBEER, Optometrist.—Registered and licensed by the State. Eyes examined, glasses fitted. Satisfaction guaranteed. Frames replaced and lenses matched. Casebeer Bldg., High St., Bellefonte, Pa. 71-22-14

V. B. ROAN, Optometrist, Licensed by the State Board, State College, every day except Saturday. Satisfaction guaranteed. Office opposite the Court House, Wednesday afternoons from 2 to 3 p. m. and Saturdays 9 a. m. to 4:00 p. m. Bell Phone. 68-40

FEEDS! We have taken on the line of Purina Feeds We also carry the line of Wayne Feeds

Table listing various feeds and their prices per 100 lbs. Includes items like Wagner's 16% Dairy, Wayne 32% Dairy, Purina 30% Dairy, etc.

Let us grind your Corn and Oats and make up your Dairy Feed, with Cotton Seed Meal, Oil Meal, Gluten, Alfalfa, Bran, Midds and Molasses. We will make delivery on two ton orders.

C. Y. Wagner & Co. Inc BELLEFONTE, PA. 75-1-lyr.

Caldwell & Son Bellefonte, Pa. Plumbing and Heating

Vapor...Steam By Hot Water Pipeless Furnaces Full Line of Pipe and Fittings and Mill Supplies All Sizes of Terra Cotta Pipe and Fittings ESTIMATES Cheerfully and Promptly Furnished