

**FARM NOTES.**

The earlier the plowing for wheat, the better the crop.

Cows consuming bulky rations of hay, ensilage and ground feeds will drink very often if water is before them.

If there is any stinking smut in your neighborhood it will be advisable to treat your seed wheat. Use two and one-half ounces of copper carbonate dust for each bushel.

There is every reason for turning under the garden refuse if you are sure that it is free from fungus and insect pests that would be increased by failure to burn this material.

Dogs and cats are attacked by no fewer than 475 species of insect parasites, more than afflict any other animals.

With the beginning of the new year a resolution that will pay well, is the decision to keep cost accounts on the major farm operations.

Owners of white pine trees should learn to identify white pine blister rust and to realize that it spreads through currant and gooseberry bushes.

Trees where poultry roosts soon become infested with mites, which can't be eradicated as easily as from a shelter.

In handling the farm gardens it is probably just as well to burn all the crop residues, rather than to turn them under.

If ringworm starts, isolate affected calves and cleanse, disinfect and whitewash the pen and fixtures. Treat the spot by saturating with sweet oil daily until the crusts can be removed without drawing blood.

Live stock abortion diseases cause losses amounting to more than \$50,000,000 annually in the United States.

If a sash or other plant house is to be built or the old ones need repairs, the job will be easier now than later. It is also well to get the hotbeds and the cold frames ready for use.

Green feed added to the ration will aid in keeping the hens in production. Be sure that there are no mites in the poultry house, and make it as comfortable as possible in every way.

One advantage of the self-feeder is that it will probably save some labor, but the amount of labor saved depends somewhat on the size and type of the feeder. A small feeder requires frequent filling, and practically all feeders require considerable attention to see that the feed is feeding down properly. Frequent attention should be given to see that feed is not being nosed out and wasted and that if the feeds are in separate compartments, the hogs are not eating too much of the protein feeds and not enough of the others or vice versa.

Chicken pox has been reported in many flocks this fall. This disease usually appears in the poultry flock in the late fall and early winter months. It may be recognized by small raised wart-like nodules on the unfeathered parts of the bird's heads. Often this disease is accompanied by colds and roup. Flocks affected with chicken pox drop in egg production but, unless accompanied by colds and roup, the mortality usually does not exceed five per cent.

Chicken pox is very contagious. "So precautions should be taken against introducing the disease into the flock. All newly purchased birds should be held in quarantine for at least two weeks."

If the disease is noticed in the flock the affected birds should be given epsom salts, immediately at the rate of 1 lb. to 400 lbs. of poultry or 100 mature birds. The treatment may be given in the drinking water or in a wet mash. Feeding 1 pint of cod liver oil to every 100 lbs. of mash. It may also be fed in a wet mash or with scratch grain. The grain should be fed in troughs to prevent the oil-soaked grain from picking up filth on the floor.

Isolation is recommended when only a few birds show lesions of the disease. Individual treatment consists of painting the nodules with iodine mercurochrome or carbolated vaseline.

Since food consumption usually drops when the flock is affected with this disease, it can be encouraged by feeding a wet mash. The use of the following formula in the drinking water will also help to stimulate the bird's appetites. Dissolve 2 1/2 lbs. of sulphate of iron crystals in one gallon of boiling water. When cool add 5 ounces of sulphuric acid. Use this material at the rate of 1 cupful to 3 gallons of drinking water. Use only wooden or non-metal fountains for watering when this material is used.

Planted seeds must have air in order to sprout—which means don't cover 'em too deep. About twice the thickness of the seeds is the right depth.

A farm machine that stands out all winter not only depreciates in value, but requires a lot of extra time and patience to get it

**GREAT ADVANCE IN ELECTRICITY IN '29**

Television for homes and theatres is just around the corner, and will make great strides in 1930, electrical experts confidentially predict.

"In the past year, the outstanding electrical development of interest to all of us was the television radio set developed for home use by Dr. Vladimir Zworykin of the Westinghouse Research Department," said F. M. McCausland of that company.

"The new system of television permits wireless pictures to be viewed by a roomful of spectators rather than by one or two, which has been the rule up to this time."

A tremendous increase in the production of electrical equipment during 1929 is noted by John Liston in a survey of General Electric activities.

Perfecting of a radio altimeter, magneto compass, and safety lights for airplane landing fields were emphasized by Liston as among the valuable electrical achievements of the year.

"More than 20 per cent. of the total income received was for electrical apparatus which a decade ago was either unknown or of negligible commercial importance," he said.

The electrification of railways proceeded at an unprecedented rate. A third large passenger ship, with electric propulsion, was completed, and similar propelling equipment for other liners is being made. Two record size turbine generators, one furnishing 208,000 kilowatts, were placed in service.

The "electric eye" is mentioned in the report of both companies. This photo-electric cell "acts with superhuman accuracy and dependability in such functions as detecting and instantaneously extinguishing fires, counting people or passing objects of any size, automatically sorting materials according to colors or imperfections, or providing safety against explosions in gas and oil furnaces."

It is being used in the new Holland Tunnel in New York not only to count the number of automobiles which pass, but also to warn a supervisor when the exhaust gases of cars become so thick as to be dangerous. The cell acts when gases darken the chamber in which it is placed.

A device to reduce the number of automobiles parked on the streets, which creates serious traffic problems in cities like New York, London and Buenos Aires, the automatic parking machine.

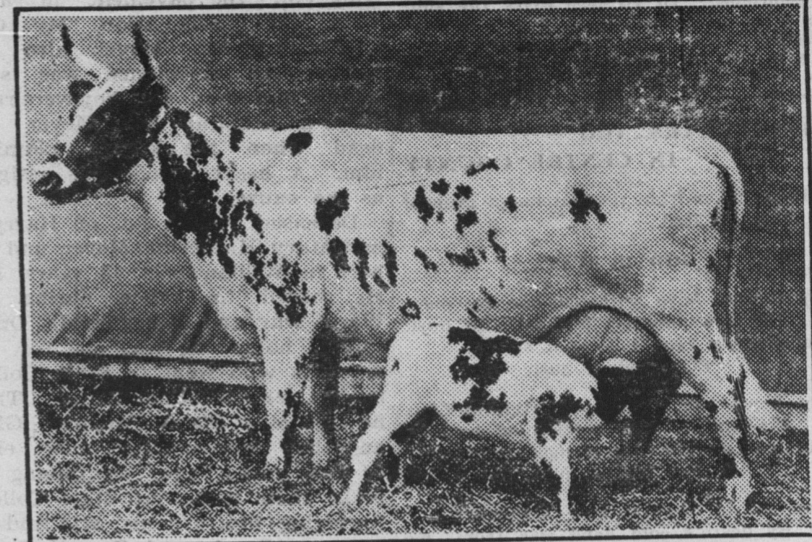
This machine would permit the motorist to drive his car onto a platform, pull a lever and obtain a

ready to run when it is needed again.

**LUMBER? Oh, Yes! Call Bellefonte 432 W. R. Shope Lumber Co.**

Lumber, Sash, Doors, Millwork and Roofing.

**Champion Hiking Cow and Son To Attend Pennsylvania Farm Show**



WEARING the steel shoes which protected her feet for 1275 miles over the roads of half a dozen states, Alice, one of the Ayrshire cows that hiked from Brandon, Vermont, to St. Louis, Missouri, will be on exhibition at the Pennsylvania Farm Products Show, January 21, 24, at Harrisburg, Pa. With Alice will be her son that was born while his mother was filling an engagement at Wichita, Kansas, less than four weeks after completing her long hike.

By walking 1275 miles in 90 days and completing a record during the year of 11,022 pounds of milk and 447 pounds of butterfat, Alice has demonstrated that the modern pure bred dairy cow is just as hardy as the original native cattle that accompanied the early settlers on their western migrations. Like her early cousins Alice depended on roadside grasses for food, but in addition had a daily supply of grain which was carried in a truck.

An average of fourteen miles per day was made, with maximum distances of as much as twenty to twenty-five miles on several different days. Notwithstanding the hardships of city streets and country roads, with constant changes in water supply, Alice finished her journey in excellent condition, actually gaining twenty pounds in body weight.

This famous Ayrshire cow was accompanied on her trip by another Ayrshire cow named Tomboy, that is now on the farm of her owner, L. B. Chapman of West Rutland, Vermont, where she is also making a remarkably good record. During the walk to St. Louis Tomboy produced over five gallons of milk per day, and gained in body weight. Robert Chapman and William Phillips, the Green Mountain boys who led these cows, will be with them at the Harrisburg Show.

**\$4.00**  
Round Trip  
**PHILADELPHIA**  
SUNDAYS  
January 26, March 9  
TRAIN LEAVES  
Saturday Night preceding Excursion  
Leaves Bellefonte.....10:30 P. M.  
See Flyers or Consult Agents  
ALL STEEL EQUIPMENT  
**Pennsylvania Railroad**

Come to the "Watchman" office for High Class Job work.

**Mr. Baum's Personal Note**  
After thirty years in business I have decided to retire on account of my health to secure a much needed rest free from business care.  
I desire to take this opportunity to thank all my customers, friends, and all business associates for their patronage any many, many favors extended to me during all these years in business in Bellefonte.  
SIM BAUM

**Prices Smashed**

**Fixtures For Sale**  
Show Cases, Cabinets  
Hat Racks, Shelves  
—in fact, all Fixtures are for sale.  
See Mr. Baum

**SIM THE CLOTHIER..... Temple Court, Bellefonte, Penna.**

**QUITTING BUSINESS**

**Doors Opened at 9 Yesterday Morning Jan'y 16 with a Mammoth Sale Big \$40,000 Stock**  
that will go down in history with a spread of bargains. Supreme values! Not only good values, nor extra good values, but greater values than have ever been offered in Bellefonte, for an outstanding, value-giving event. You'll not be disappointed—this sale will unquestionably astonish you!

**Men's Suits and Overcoats..... Boys' Clothing**



Going out of business necessitates cleaning out our entire remaining stock of suits and overcoats. All clean merchandise. Single and double-breasted styles, and no matter what you purchase, you'll be agreeably surprised with such high quality at such low prices. Sale includes clothing from FASHION PARK, MICHAELS-STEIN, and CLOTHCRAFT.  
Were \$25.00 and \$30.00.....now, \$18.75  
Were \$35.00 and \$40.00.....now, \$27.75  
Were \$45.00 and \$50.00.....now, \$36.75  
Were \$55.00 and \$60.00.....now, \$39.75

An opportunity for parents to outfit the boy at a saving of real money. And you can replenish his supply of furnishings at prices that spell VALUE.  
Boys' Suits and Overcoats.  
All Boys' Corduroy Suits, values to \$15.00, at half price.  
Boys' Golf Hose, values to \$1.00.....now .39c.  
Boys' Knicker Suits, values to \$18.00.....now, \$4.95



When you buy a Schoble or Knox Felt Hat you have the assurance of correctness, style and superior quality. Buy yours now at a real saving.  
Values to \$3.85.....\$2.85 Values to \$5.00.....\$3.85  
Values to \$8.50.....\$5.85

We are showing a wide selection of plain and fancy hose in silk, silk mixtures and finest grade lisle. Snappy combinations in the newest popular colors. Extraordinary value in every pair will make them walk right out.  
Values to \$5.50, 4 pr for \$1.00, Values to \$7.50, 3 pr for \$1.00  
Values to \$1.00.....2 pr for \$1.00

Regular \$1.00 value Union Suits.....\$ .69  
Regular \$1.50 and \$2.00 Union Suits.....\$1.19  
Men's separate athletic shirts and shorts, values to \$1.50.....\$ .79  
Ritchey Shirts, values to \$3.50, now.....\$1.89



**Temple Court..... SIM THE CLOTHIER .....Bellefonte, Pa.**