

**FOUR FINGERS ARE UNTRAINED**

**Hands of the Average Man Crippled, as Demonstrated by the Therapy Expert.**

"I suppose you regard yourself as a whole man," demanded one of the vocational therapy experts at the Warren Reed general hospital in Washington, writes Samuel Hopkins Adams in the Red Cross Magazine.

Looking myself over hastily to make sure that I had not lost anything in the surgical ward, I replied that I could count the usual number of arms, legs, and other appurtenances.

"All right," said the expert, "but you're sort of a cripple at that. You're atrophied."

"If I am, I've never discovered it," I assured him.

"Of course not. People never do until they're shown. You haven't got anything like the full use of more than four fingers and two thumbs out of a total of ten. The normal man—the man who believes himself normal, I mean—never has. Can you light a safety match with one hand?"

He handed me the box and the match. After the second abortive attempt the match fell on the floor and the box fell on the match.

"That's elementary, that stunt," remarked the instructor. "Our one-arms can do that before they get out of bed. You see, your two smaller fingers are really crippled. Now we teach our fellows to do the work with those fingers that you have to use another hand for. That's the whole physical principle of our training in its simplest form—substitution."

**SHARPEN YOUR WITS ON THIS**

**Many Will Find Time Limit of Three Seconds Altogether Too Great a Handicap.**

These are the days when the efficiency expert is inviting us to prove that we measure up to the average in human intelligence by answering certain complicated questions in a given number of seconds. Here is one you can try on yourself when nobody is around. Time yourself, and when you have solved it go and try it on somebody else, not forgetting to remind him that you did it in three seconds and that three seconds is the time limit.

Outline a square on paper and then divide it into ten triangles each of which is equal to one ninth of the total sum or area represented by the other nine triangles.

Three seconds is the limit, so go to it. Of course, if you are timing yourself, you need not be too particular. A few seconds or minutes over will not make much difference beyond, in a few isolated cases, confirming or shattering one's own private opinion of oneself.

**Endurance.**

Though a nation may be bought and sold, deceived or betrayed, oppressed or beggared, and in every other sense undone, all is not lost if a sense of national honor survives the general ruin. Even an individual cannot be crushed by events or overwhelmed by adversity if, in the wreck and ruin of his fortune, the character of the man remains unblemished. That force is elastic, and, with the help of resolution, will raise him again out of any depth of calamity. But if the injured sufferer, whether it be a great or a little community, a number of individuals or a single person, be content to submit in silence, and to endure without resentment—if no complaints shall be uttered, no murmur shall be heard, deploration est—there must be something celestial in the spirit that rises from that descent.—Junius.

**No Chloroform Nausea.**

Chloroform administered through a tube is said to dispense with the nausea which is almost invariably encountered otherwise. The new practice was inaugurated by a French practitioner, Doctor Guisez. The nausea is caused by a part of the chloroform vapors being absorbed by the esophagus and the stomach. Doctor Guisez introduced the chloroform vapors directly into the windpipe. The tube method already has been employed in several hundred cases, and with great success. It is particularly useful for operations to be performed on the head and neck.

**Idea for Feminine Apparel.**

Professor Cimiclan noted certain substances that have the permanent quality of developing intense brilliancy of color when brought near the light and fading away to dullness again as the light decreases. He urged research with a view to obtaining an increased number of these bodies and their possible application to textile fabrics. As a true Italian, despite his Armenian name, he imagined a beautiful woman enrobed in such stuffs, entering a brilliantly lighted room and growing more resplendent as she approaches.

**Steam-Heated Nathan.**

While Nat Goodwin was appearing in "Nathan Hale," the popular actor had opportunities not only to illustrate his well-known ability as a comedian, but also to demonstrate his less known power as a tragedian. When the hero was about to be

hanged, there was a period of absolute silence on the stage. Or rather, there should have been, for one night the steam heaters became unmanageable and created such a hideous racket that the audience began to titter, and the scene was ruined.

**Fewer Accidents Now, and Why.**

War conditions, by bringing large numbers of new and unskilled workers into industry, had in general the effect of increasing considerably the number of industrial accidents, both actually and relatively to the number of persons engaged in certain industries. Information recently received by the inspection and investigation service, department of labor, indicates, however, that in general the number of such accidents has now returned to approximately normal figures. In a comparatively short time before the entrance of America into the war, the effect of workmen's compensation laws and safety work had reduced the number of industrial accidents almost 50 per cent. The temporary increase due to the influx of war workers has now vanished.—Scientific American.

**A Little Learning.**

"Do you subscribe to the theory that a little learning is a dangerous thing?" "Yes," replied Gadspar. "I thought I knew enough about my automobile to take it apart and put it together again, but this bill of \$154.17 from a repair shop proves that I didn't."—Birmingham Age-Herald.

**COURT HOUSE NEWS**

**REAL ESTATE TRANSFERS.**

John A. Dahl to Winburne Fire Brick Co., tract of land in Rush township; \$1.

John Barillo, et ux to Harry Wasenichsin, tract in Rush township; \$1600.

John W. Kelley, et ux to Ralph J. Lauder, tract of land in College borough; \$5300.

Harry B. Scott, et al to John Barillo, tract of land in Rush township; \$136.

C. W. Keller, et ux to Ray R. Kelsey, tract of land in Worth township; \$1.

Sarah E. Satterfield to James O. Clark, et al, tract of land in Bellefonte; \$3400.

Bellefonte Trust Co., Admr., to William G. Eike, tract of land in Spring township; \$570.

Isabella Stump, et al to Rebecca Dunkle, tract of land in Millheim; \$1000.

Lydia Strickland, et bar to Sadie McCartney, tract of land in Howard township; \$250.

John H. Friday, et ux to Minnie M. Friday, tract of land in Philipsburg; \$1.

H. M. Underwood to American Lime and Stone Co., tract of land in Bellefonte; \$200.

Mary M. Peters to Sanford Lewis, tract of land in Philipsburg; \$3600.

First National bank of Howard to A. M. Butler, tract of land in Howard borough; \$2700.

Albert Deal, et ux to Jacob C. Snyder, tract of land in State College; \$2000.

**A Bellefonte Interview**

**MRS. GORDON TELLS HER EXPERIENCE.**

The following brief account of an interview with a Bellefonte woman, four years ago, and its sequel, will be read with keen interest by every citizen.

Mrs. J. T. Gordon, 130 E. Beaver St., Bellefonte, says: "I, and another member of my family have found great benefit from the use of Doan's Kidney Pills, which we procured at Parrish's Drug Store. My trouble was a dull, constant backache which kept me in misery at times. Mornings I was so sore and lame I dreaded to begin my housework, for it was a burden. Doan's Kidney Pills, taken according to directions, restored my kidneys to a normal condition. I have had no return of the backache or kidney disorders. This medicine surely has my gratitude for the lasting benefit it brought me." (Statement given April 22, 1914).

On October 19, 1918, Mrs. Gordon said: "I gladly confirm my previous statement for Doan's Kidney Pills, as I certainly have found them to me all that is claimed for them. Doan's Kidney Pills cured me, for which I am very thankful."  
60c. at all dealers. Foster-Milburn Co., Mfrs., Buffalo, N. Y. 64-27

**Get the Best Meats.**

You save nothing by buying poor, thin or gristly meats. I use only the **LARGEST AND FATTEST CATTLE** and supply my customers with the freshest, choicest, best blood and muscle making Steaks and Roasts. My prices are no higher than poorer meats are elsewhere.

I always have  
—DRESSED POULTRY—  
Game in season, and any kinds of good meats you want.  
TRY MY SHOP.  
P. L. BEEZER,  
High Street. 34-34-ly. Bellefonte, Pa.

**FINE JOB PRINTING**

—A SPECIALTY—  
AT THE  
**WATCHMAN OFFICE.**

There is no style of work, from the cheapest "Dodger" to the finest  
**BOOK WORK.**

that we can not do in the most satisfactory manner, and at prices consistent with the class of work. Call on or communicate with this office.

**Locusts Are Bad Feed for Chickens.**

If the so-called "seventeen-year locusts" or cicades, are plentiful in your locality, and you are keeping chickens that have a chance to run under the trees where the locusts are numerous, watch out for trouble, warns the United States Department of Agriculture. It might well be supposed that the numerous locusts would provide a feast for the chicks and they do, but this feast is not unattended with danger. Serious losses may result from the chicks eating too many of these insects. The wings and leg parts of the locusts seem to be quite indigestible, and are

likely to obstruct the outlet of the crop in such a way as to cause the chicks to become crop bound.

**A Much Married Lady.**

Sign in movie theatre: "Her Wedding Night." Every night this week.

—For high class job work come to the "Watchman" office.

**Nervy.**

"What are you writing, old man?" "An article entitled 'Advice to Graduates.'" "Eh! Advice to grad— Well, of all the presumption!"

**"Meats in Storage"**

Every working day of the year 75,000,000 pounds of meat are required to supply home and export needs—and only 10 per cent of this is exported.

These facts must be kept in mind when considering the U. S. Bureau of Markets report that on June 1, 1919, there were 1,348,000,000 pounds of meats in cold storage. If the meat in storage was placed on the market it would only be 20 days' supply.

This meat is not artificially withheld from trade channels to maintain or advance prices.

Meats in storage consist of—

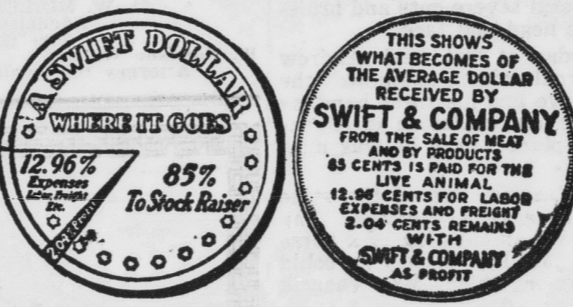
- 65 per cent (approximate) hams, bacon, etc., in process of curing. It takes 30 to 90 days in pickle or salt to complete the process.
- 10 per cent is frozen pork that is to be cured later in the year.
- 6 per cent is lard. This is only four-fifths of a pound per capita, and much of it will have to go to supply European needs.
- 19 per cent is frozen beef and lamb, part of which is owned by the Government and was intended chiefly for over-seas shipment. If this were all diverted to domestic trade channels, it would be only 1½ lbs. per capita—a 3 days' supply.

100%

From this it will be seen that "meats in storage" represent merely unfinished goods in process of curing and the working supply necessary to assure the consumer a steady flow of finished product.

Let us send you a Swift "Dollar". It will interest you. Address Swift & Company, Union Stock Yards, Chicago, Ill.

**Swift & Company, U. S. A.**



**Farmers--Gardeners--Truckers**

**The Man Who is Content**

to go along year after year planting the same land and dribbling a little cheap fertilizer in the furrow, merely to get a little more out of the land than he puts in, is not farming at all. The man who is not improving the land is going backward. Land must be improved in cultivation or lose its fertility. Good Fertilizers will produce desired results. We have them for every use.

We aim to carry a full line of **FIELD SEEDS!** Our **SEEDS** are the **BEST** we can **BUY** **SPRAYING MATERIAL** for Every Pest and Blight as well as the spraying machinery with which to apply them. A Full Line of

**Agricultural Implements, Garden Tools, Etc.**

Special Feeds; Roofing Etc. Let us know your wants.

**Dubbs' Implement and Seed Store**

62-47 DUNLOP STREET, BELLEFONTE, PA.

**OFFICIALLY OVER**

THE almanacs advise that summer will be over September 21st. Think of it! Over two solid months of hot weather ahead.

Take our advice, approved by sensible men—let us fit you out with our hot weather clothes. Why endure discomfort when at exceptionally low prices you may be both coolly and economically clad in any one of our wide assortment of

**HIGH-ART CLOTHES**

Made by Strouse & Brothers, Inc., Baltimore, Md.

for hot weather wear?

Banish those ideas of ill-fitting makeshifts. Light as these clothes are, their unusual tailoring gives them the lasting quality of style peculiar to heavier clothes. Emancipate yourself today!

**FAUBLE'S**

58-4 Allegheny St., BELLEFONTE, PA.

**Your Banker**

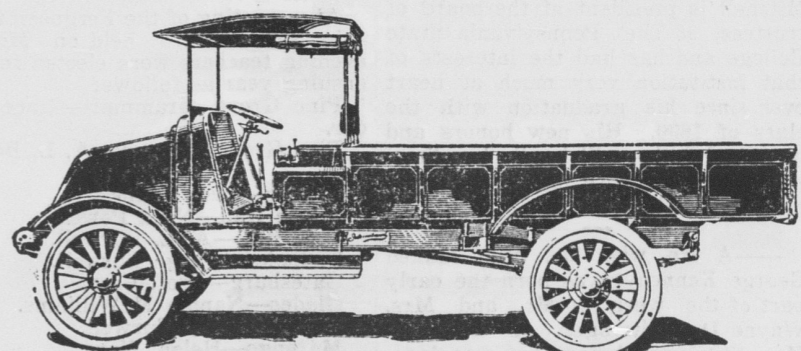
The institution with which you maintain banking relations can be of service to you in many ways.

**The Centre County Banking Co.**

does not consider that its service to its patrons ceases with the safeguarding of their funds. It keeps in personal touch with all of them in such a way as to be of assistance very often when other matters develop affecting their interest.

It Invites You to Take Advantage of Its Unusual Service.

**INTERNATIONAL TRUCKS**



**WILL DO ALL YOUR HAULING**

3-4 Ton for Light Hauling  
Big Truck for Heavy Loads

"Greatest Distance for Least Cost"

**GEORGE A. BEEZER,**

BELLEFONTE, PA. 61-30 DISTRIBUTOR.