

## "V" BUTTONS AND FLAGS ARE READY

Most Striking Emblems of All  
Loans to Be Used in  
Last Campaign.

Buttons for subscribers to the Victory Liberty Loan and pennants for their homes and places of business are ready for distribution throughout this district. When the three-weeks' campaign begins, April 21, every locality will be supplied; every buyer who shares this last popular loan of the war will be able to wear his badge of honor.



The "V" buttons are the most striking of all that have been devised in the five campaigns. They are of dark blue with a white "V" in the center. About the letter are the words "Liberty Loan."



The window honor emblem for the home carries a large blue "V" under the word "subscriber" in red. Another emblem with "100 per cent" enclosed in a circle will be hung in homes

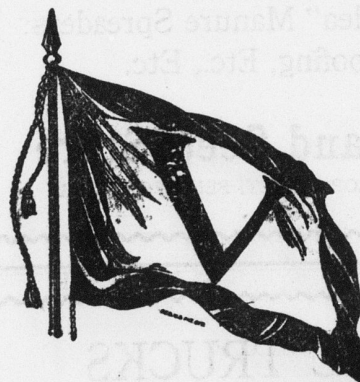
Household



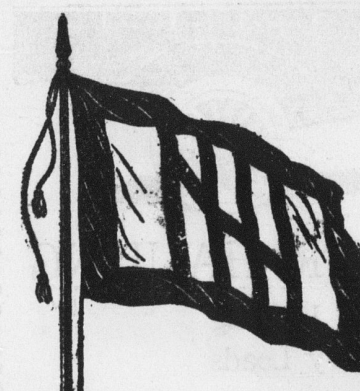
The VICTORY LIBERTY LOAN

AWARDED BY THE UNITED STATES TREASURY DEPARTMENT.

where all have subscribed. The industrial honor flag is square with a border of red, and will be awarded every business institution where 75 per cent or more of the employees subscribe.



The community honor flag which goes to every city or town upon obtaining its quota has a large "V" upon a white background with a border of red.



For this loan there has been made a "Beginning to End" honor flag, to be awarded to every city and town which has raised its quota in all five campaigns. It carries five blue stripes on a white background, the fifth stripe crossing the others in a diagonal line. There is a deep border of red.

## SOLDIERS ANSWER CALL OF BACK TO THE FARM.

Washington, D. C.—The "back to the farm" movement which has been advocated for many years by economists, who feared ill results from the constantly growing shortage of farm labor and consequent falling off in production of foodstuffs, appears to be gathering real momentum with the homecoming of the soldiers. Secretary of the Interior Franklin K. Lane, who is father of the plan to have the government turn its reclaimed land over to the discharged soldiers and sailors on easy payments, and who is the author of the bill which seems to effectuate the plan, reports that he is receiving on the average 1000 inquiries each day from soldiers who are interested in the idea and want to know the details. The on-air life led by the men whether in camp in this country or on the battle lines, has given them a keen hankering for the great outdoors. It is worth noting that while employers are hunting vainly for office help in many sections, the soldiers are reported as busy trying to get information about the farm situation. Many of them say they have had enough excitement to suffice for a lifetime and the bright lights of the cities no longer lure them.

Assistant Secretary G. I. Christie, representative of the United States Department of Agriculture on the Committee on Employment of Soldiers and Sailors, substantiates the statement of other observers that the discharged soldiers and sailors are asking to be shown the way to the farms.

"Reports from the farm help specialists of the United States Department of Agriculture," says Mr. Christie, "indicate large numbers of returning soldiers and sailors are taking up work on the farms. During the last two years the labor shortage on the farms has been such that these young men are welcomed by the agricultural people and are given every opportunity and encouragement to take up the work."

"Through the States' relations of the Department of Agriculture and the extension service of the agricultural representatives have been placed in demobilization camps, where they are conferring with the soldiers and giving them needed information as to openings and opportunities in agriculture."

It is true that some of the men who left the farm for the army will not return to the land. This is neither unusual nor unexpected. Reports from other agricultural people indicate that the large majority of men who came from the farms and who are given any reasonable opportunity are again taking up this work. It is found too, that the large body of men who left the farms to take up war work in connection with the building of cantonments, war industries, etc., are returning in large numbers.

"Farmers are offering good wages, in many cases a partnership in the business, and are building suitable homes and supplying better living conditions. All of this is appealing to men who have experienced hardships in the city as a result of poor living and other unusual expenses. For a number of years farms have been short of labor. Much work has been allowed to go undone. There is now an opportunity for farmers to get a supply of labor which can be used in placing drains, building fences, clearing lands, repairing buildings and in other ways making improvements and placing the farm in the condition in which they wish to see it."—Record.

**Plagues Not Feared.**  
H. De Brun (Bulletin de l'Académie de Médecine), having had several years' experience in Syria with plague, including an epidemic of pneumonic plague, protests against the view that pneumonia following influenza may be related to the eastern disease. In pneumonic plague the cough is characterized by a quiet, spasmodic expiration, repeated continuously for long periods every ten to thirty seconds, and might be termed a "whispering cough." Instead of the optimism frequently manifested on the day before death in influenza there is a distressing consciousness of impending death in the pneumonic plague patient. Nearly all cases of the latter plague end fatally.

### VICTORY LOAN SUBSCRIPTIONS ON INSTALMENT PLAN

Uncle Sam will accept part payments and allow six months' credit to those who wish to take advantage of the partial payment plan.

- 1st Payment—10 per cent on or before May 10, 1919.
- 2d Payment—10 per cent on or before July 15, 1919.
- 3d Payment—20 per cent on or before August 12, 1919.
- 4th Payment—20 per cent on or before September 9, 1919.
- 5th Payment—20 per cent on or before October 7, 1919.
- 6th and Last Payment—20 per cent on or before November 1, 1919.

Those who subscribe on this plan pay a small amount of interest for the accommodation. Full payment of subscriptions may be made on May 20 or on any instalment date thereafter.

## Poison Bait for Rats.

Salt Lake City.—Last year 100,801 pounds of poison bait were used by 1703 co-operative farmers in Utah to stop the enormous losses sustained annually from rodents.

This poison was applied on 86,104 acres of infested land, and the farmers reported 892,179 rodents destroyed with an estimated saving in crops of \$702,368.

Estimates of the savings accomplished were made by specialists of the Bureau of Biological Survey, United States Department of Agriculture, who aided State and local workers in the enterprise. Farm bureaus already have ordered quantities of strychnine to carry on similar work in the immediate future, and have prepared to mix poison bait at central places and supply it to farmers who agree to use it according to directions and make reports of results. The bureau says that if the work could be properly financed they could use five times the amount of poison they now have.

## "Picking" Easter Eggs.

There is an Easter custom among boys in and around Philadelphia and other parts of the country of "picking" eggs. A boy will go over the eggs in the pantry (with his mother's consent, it is hoped), and, by gently knocking the ends of his teeth, will select one or more of the strongest. Then he goes out among his playmates and soon is challenged, or he himself will invite another boy to "pick." Before daring to risk this, each boy will try the other's egg on his teeth and if he thinks his chances are good he will accept the challenge. The boy challenged will then hold his egg so as to expose only the very point, while the challenger lightly raps the egg with the point of his own until the shell of one or the other is slightly cracked. The eggs are then reversed and the challenger picks in the same way. The winner gets the broken egg.—Saint Nicholas.

## Airplane Hunter.

We are glad to see, by the Washington Evening Star, that the shooting of wild fowl with machine guns from airplanes has been forbidden by order of the director of military aeronautics. Instead of countenancing this cruel practice, in which the birds have so little chance of escape, the orders are that all flights wherever migratory fowl may be found, shall be conducted in such a way as to interfere as little as possible with the birds.

## Relieved His Mind.

"Your rich uncle nearly fell the victim to a bear."  
"Where?"  
"In the Maine woods."  
"Oh! I was afraid it was in the stock market."

## Why the Lily Means Easter.

The lily is typical of Easter because of its whiteness and personification of purity. In its natural state it blooms about Easter time in France, its native home.

## Kitchen in Mourning.

"Here, water. This steak is positively burnt black."  
"Yes, sir. Mark of respect, sir. Our head cook died yesterday."

## Subscribe for the "Watchman."

## ANNOUNCEMENTS.

The following are the prices charged for announcements in this column: Sheriff, \$8.00; Prothonotary \$8.00; Treasurer, \$8.00; Register, \$10.00. No. 1, occupation fee, \$10.00. No. 2, \$10.00. All other county offices, \$5.00. Announcement will not be made for any candidate willing to pledge himself to be guided by the decision of the Democratic voters as expressed at the primaries.

## FOR SHERIFF.

We are authorized to announce the name of William A. Carson, of Haines township, as a candidate for the nomination of Sheriff, subject to the decision of the Democratic voters of Centre county as expressed at the general primaries to be held Wednesday, September 17th, 1919.

## FOR REGISTER.

We are authorized to announce the name of J. Frank Smith, of Bellefonte, as a candidate for the nomination of Register, subject to the decision of the Democratic voters of Centre county as expressed at the general primaries to be held Wednesday, September 17th, 1919.

## FOR RECORDER.

We are authorized to announce the name of D. Wagner Geiss, of Bellefonte, as a candidate for the nomination of Recorder, subject to the decision of the Democratic voters of the county as expressed at the general primaries to be held September 17th, 1919.

## COUNTY TREASURER.

We are authorized to announce the name of James E. Harter, of Penn township, as a candidate for the nomination of County Treasurer subject to the decision of the Democratic voters as expressed at the general primaries to be held Wednesday, September 17th, 1919.

## COUNTY COMMISSIONER.

We are authorized to announce the name of George M. Harter, of Marion township, Nitany position, E. F. D. No. 1, occupation farmer, for the nomination for County Commissioner subject to the decision of the Democratic voters as expressed at the general primaries to be held Wednesday, September 17th, 1919.

A Vast Array of Advantageous  
**Easter Offerings**

IN  
Misses' and Women's Stunning

**OUTERWEAR**

DISTINCTIVE STYLES—CREDITABLE  
QUALITIES—ATTRACTIVE PRICES

These values are convincing evidence that handsome Easter garments can be bought for considerably less cost here than elsewhere.

Women's Serge  
**CAPES 23.50**

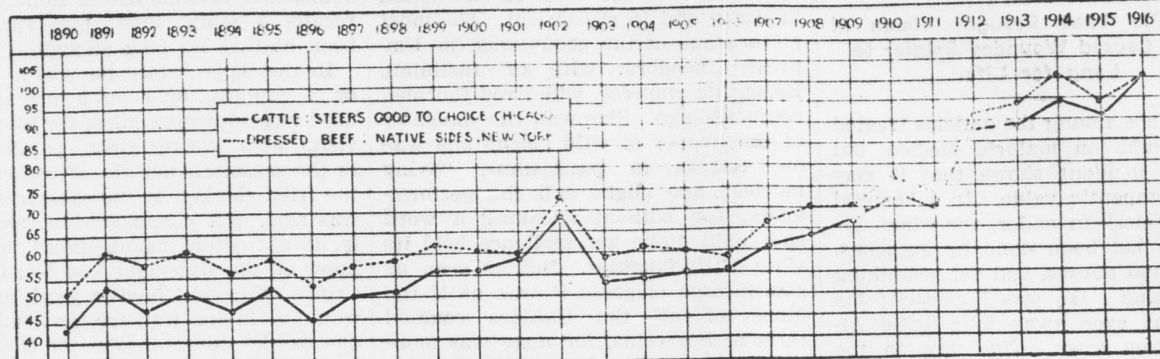
have full sweep back, belted jacket front, slashed pockets, string belt tying in sash, rows of braid and bone buttons. Navy, pekin, blue, garnet, brown and tan.

**COHEN & CO.**

Department Store

64-15-1t BELLEFONTE, PA.

## Why Beefsteak Is High



This chart was copied from Bulletin No. 226, U. S. Bureau of Labor Statistics. It is the latest that has been issued. 100—1916 price.

Remember when beefsteak was 20c a pound?

Now it's 40 and 50 cents a pound.

Why?

This chart shows that the price packers have had to pay for cattle has gone up with the price received for beef.

In fact, it shows that the "spread" between cattle and beef prices has been gradually reduced during the past 30 years—owing to competition among packers, their increased efficiency, bigger volume, and elimination of waste.

The packer's profit of only a fraction of a cent per pound of meat has helped to narrow this "spread."

Increased farm-production costs have made higher cattle prices necessary.

**Swift & Company, U. S. A.**



## Traced to Pagan Ceremony.

It was through the efforts of the priests and teachers of the early Christian church that the Easter season was shorn of its pagan ceremonies and converted into a Christian anniversary. These priests, finding it impossible to induce the German and Saxon tribes among whom they labored to renounce their worship of the Goddess of Spring—variously known as Ostera, Eostre and Eastre—skillfully managed to give the ceremonies another turn, proclaiming that the season celebrated the rising of Christ from the dead. Gradually, as the new religion gained ground, the old heathen superstitions died out. The goddess Eastre was no longer revered, but her name was retained to designate what had now become the festival of the Resurrection. For the first three centuries of the Christian era Easter was celebrated on the same day as the Jewish Passover, but after much dissatisfaction had been expressed at this coincidence of the two feasts the council of Nice devised, in

325 A. D., the present mode of determining the date of Easter. This, as every one knows, provides that it shall fall on the first Sunday after the full moon which occurs upon or next after March 21, the vernal equinox.—Ex.

—Put your ad. in the "Watchman."

## New Advertisements.

WANTED—Local representative for the most popular motor Truck line in America. Write for terms to "Truck," care of Watchman. 64-18-3t

EXECUTOR'S NOTICE—Letters testamentary upon the estate of J. Harris Green, late of Bellefonte borough, deceased, having been granted to the undersigned, all persons knowing themselves indebted to said estate are requested to make prompt payment, and those having claims against the same must present the same, duly authenticated, for settlement.

EMMA WISTAR GREEN,  
W. HARRISON WALKER,  
Executors,  
Bellefonte, Pa.

—For high class job work come to the "Watchman" office.

## New Advertisements.

ORPHAN'S COURT SALE.—By virtue of an order issued April 9, 1919, out of the Orphan's Court of Centre county, the undersigned executor of the last will and testament of Julia McDermott, late of Bellefonte borough, deceased, will sell on

FRIDAY, MAY 2nd, 1919,  
at 1:30 o'clock p. m., at the court house in Bellefonte borough, the following described real estate:  
All that certain house and lot situate in Bellefonte borough, Centre county, Pennsylvania, bounded and described as follows, to wit: Beginning on Bishop street at corner of lot of W. C. Heilig, now Ed. Gebret, thence along same south 120 feet to a post; thence west along lot of W. H. Thompson 45 feet to lot of W. G. Morrison estate; thence along same north 120 feet to Bishop street; thence along Bishop street east 45 feet to place of beginning. Thereon erected a two-story stone dwelling—a very desirable home.  
Terms of Sale—Ten per cent. of bid on day of sale and balance of ninety per cent. on confirmation of sale.

JOSEPHINE McDERMOTT,  
W. G. Runkle, Executor,  
64-15-3t Attorney, Bellefonte, Pa.

## New Advertisements.

FINE PROPERTY FOR SALE.—Very desirable location. Inquiries of HAMMON SECHLER, 64-12-1t Bush House Block, Bellefonte.

## IRA D. GARMAN

DIAMONDS, MILITARY WATCHES  
AND JEWELRY.  
FINE REPAIRING  
11th Street Below Chestnut,  
63-34-6m. PHILADELPHIA, PA.



Let us  
put a new  
top on your  
car

Let us re-cover your top with Neverleek, the guaranteed top material. You'll want a new set of curtains, too, ready for rainy weather. We use only the best quality of materials and our workmanship is warranted. Drive in and see us about it.

WIELAND BROS. & CO.  
Auto Painting  
BELL PHONE  
64-12-1t BOALSBURG, PA.

Picture Life of Roosevelt  
REAL STUFF 7 REELS



A  
**Mighty  
Drama  
of the Life  
OF A  
Mighty  
Man**

This approved by himself picture of our famous ex-President's life from the cradle to the grave is historical as well as an interesting story of a wonderfully human character, containing Drama-Comedy-Action-Thrills-Suspense-Pathos

We guarantee this picture worth coming miles to see

**Scenic Theatre**

Monday April 21st Matinee 10 and 15  
Night 10 and 20c  
Night Only  
Tuesday April 22nd Night Only