

TO REBUILD OLD SWEDE MILL

Original Building, Which Was Burned In 1835, Figured in Revolutionary War.

The Frankford Historical society, in pursuance of its plan to save to posterity all possible information in regard to early landmarks and points of historic interest in that section of Pennsylvania, has succeeded in restoring to the community the plan of an old Swede mill which burned in 1835, the Philadelphia American states.

The original mill was built by the Swedes before the arrival of Penn. A fire destroyed this ancient structure in 1835, when it was replaced by another, in which the plan of the original structure was preserved as nearly as possible. The second mill also was destroyed by fire, which is still remembered by a few old residents.

It was at the original mill that Lydia Darrah overheard British officers discussing plans to deliver an overwhelming attack upon Washington and his army at Whitemarsh and carried the information to an American officer in time to enable Washington to make preparations to counteract the attack.

Every available source of information was exhausted before the society obtained the desired information as to the plan and appearance of the old mill. Four drawings were made on information supplied by old residents, and the finding of additional information resulted in the acceptance of the plan submitted by Charles W. Caster, one of the oldest members of the society, who frequented the mill in his youth.

ZINC'S BIG PLACE IN WAR

Important Metal Has Advanced in Price Until It Costs More Than Copper.

Zinc is so essential in war time that it has risen enormously in price in the last year. Costing originally only two-fifths as much as copper, it now costs decidedly more than copper despite the fact that copper itself has sharply increased in value.

Zinc is a constituent of cartridge brass and shell fuses, and is used also as a covering of iron barbed-wire fencing. In 1913 the United States, Germany and Belgium were the leading producers of zinc.

Of the three, only the United States smelted domestic ores, the Philadelphia Inquirer states. Belgium and Germany relied mainly on zinc concentrates that they imported from the Broken Hill mines in New South Wales, where, for one reason or another, it does not pay to do the smelting. France, Spain and Great Britain also produce substantial quantities, but not enough to supply their own needs.

Austria and Germany have considerable deposits of the ore in Silesia, Hungary, Carinthia and the Tyrol. As the zinc smelting furnaces of Great Britain are not well adapted for dealing with the Broken Hill concentrates, it buys the bulk of its supplies from the United States.

Moral Advice to the Young.

It should be observed that moral depravity is all the more difficult to discern because its manifestations are checked and cloaked by public order, as enforced by law; by the necessity of having a good name; and even by ordinary polite manners. And this is not all. People commonly suppose that in the education of the young their moral interests are furthered by representing upright and virtuous principles generally followed by the world. Later on, it is often to their great harm that experience teaches them something else; for the discovery that their early years were the first to deceive them is likely to have a more mischievous effect on their morality than if these persons had given them the first example of ingenuous truthfulness by saying frankly: "The world is sunk in evil, and men are not what they ought to be; but be not misled thereby, and see that you do better."—From "The Basis of Morality," by Arthur Schopenhauer.

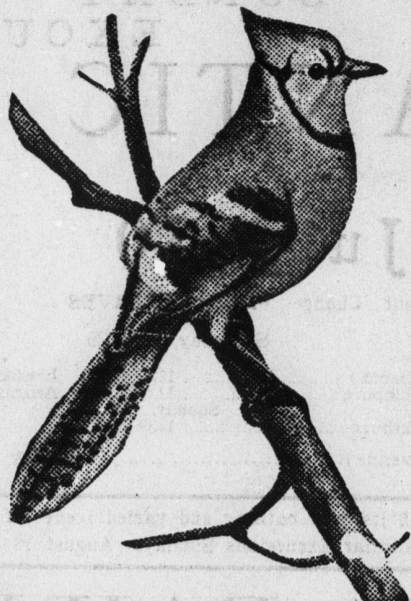
Change for Advertising.

If attractive advertising has resulted in the larger use of less meritorious products what might such a campaign mean for meat? The dairymen have projected such a defensive and aggressive campaign. How attractive are some of the cereals pictured in the advertisements, and how appetizing appear some of the fruits marketed through the citrus growers' associations. What then of the possibilities of picturing an elegantly marbled browned-to-a-queen's-taste steak or roast, or of catching the color of a properly cured ham the flavor of which will never be forgotten? Such pictorial presentation would make strong the desire for a savory, strength building steak and increase the "hankering" for ham.—Breder's Gazette.

The "Watchman" should be read in every home in Centre county. Why don't you try it?

BLUE JAY

Cyanocitta cristata



Length, eleven and one-half inches. The brilliant blue of the wings and tail combined with the black crescent of the upper breast and the crested head distinguish this species.

Range: Resident in the eastern United States and southern Canada, west to the Dakotas, Colorado, and Texas.

Habits and economic status: The blue jay is of a dual nature. Cautious and silent in the vicinity of its nest, away from it it is bold and noisy. Sly in the commission of mischief, it is ever ready to scream "thief" at the slightest disturbance. As usual in such cases, its remarks are applicable to none more than itself, a fact neighboring nest holders know to their sorrow, for during the breeding season the jay lays heavy toll upon the eggs and young of other birds, and in doing so deprives us of the services of species more beneficial than itself. Approximately three-fourths of the annual food of the blue jay is vegetable matter, the greater part of which is composed of mast, i. e., acorns, chestnuts, beechnuts, and the like. Corn is the principal cultivated crop upon which this bird feeds. But stomach analysis indicates that most of the corn taken is waste grain. Such noxious insects as wood-boring beetles, grasshoppers, eggs of various caterpillars, and scale insects constitute about one-fifth of its food.

Health Commissioner Tells Why Men Are Bald.

In the "American Magazine" Dr. Arthur R. Reynolds, former Health Commissioner of Chicago, gives the following reasons for baldness: "The hats that men wear are the cause of their baldness above the hat line. Women also wear hats, but their hats are fastened to their hair and do not grip the head as men's hats do. All other causes of baldness such as infections, seborrhea, etc., affect both sexes alike and are, in fact, more difficult to treat locally in women than in men because of their long hair.

"How does the hat affect the growth of hair in man? By compressing the arteries, the veins, the lymphatics, and to some extent the nerves that supply and nourish the hair. It is not because the hat is hard or soft or that it keeps the head too hot. It is because the hat band compresses the vessels and starves the roots of the hair. Caps may do the same thing, but caps as a rule do not grip the head so tightly as hats do.

"Baldness usually begins at the summit of the crown toward the back part, at the distant and weaker part of the vessels furnishing the circulation. In such cases the pressure has been on the vessels on the side of the head. Sometimes the baldness begins above the forehead and is the high forehead type of baldness. In these cases the pressure has been upon the vessels of the forehead. Sometimes the head is bald low down in the back where the pressure has been upon the vessels in this region. When the head is completely bald on top the pressure has been on the vascular supply of the scalp."

—They are all good enough, but the WATCHMAN is always the best.

WHITE-CROWNED SPARROW

Zonotrichia leucophrys



Length, seven inches. The only similar sparrow, the white-throat, has a yellow spot in front of eye.

Range: Breeds in Canada, the mountains of New Mexico, Colorado, Wyoming, and Montana, and thence to the Pacific coast; winters in the southern half of the United States and in northern Mexico.

Habits and economic status: This beautiful sparrow is much more numerous in the western than in the eastern states, where, indeed, it is rather rare. In the East it is shy and retiring, but it is much bolder and more conspicuous in the far West and there often frequents gardens and parks. Like most of its family it is a seed eater by preference, and insects comprise very little more than 7 per cent of its diet. Caterpillars are the largest item, with some beetles, a few ants and wasps, and some bugs, among which are black olive scales. The great bulk of food, however, consists of weed seeds, which amount to 74 per cent of the whole. In California this bird is accused of eating the buds and blossoms of fruit trees, but buds or blossoms were found in only 30 out of 516 stomachs, and probably it is only under exceptional circumstances that it does any damage in this way. Evidently neither the farmer nor the fruit grower has much to fear from the white-crowned sparrow. The little fruit it eats is mostly wild, and the grain eaten is waste or volunteer.

Infantile Paralysis in New York.

On July 10 a report on infantile paralysis in Greater New York showed the total number of cases up to that date to be 1,083, with 238 deaths. A general cleaning-up campaign was inaugurated in the city, and a large number of arrests were made for violations of the sanitary laws. On July 16 the number of cases had increased to 1,959, and the deaths to 386. It is explained that the disease "is an infectious and communicable disease which is caused by the invasion of the central nervous organs—the spinal cord and brain—by a minute, filterable micro-organism which has now been secured in artificial culture and as such is distinctly visible under the higher powers of the microscope."

—For high class Job Work come to the WATCHMAN Office.

Can you Amuse Children?—If so, be grateful for a very unusual accomplishment. The erstwhile theory that any person who really loved children could amuse them with the greatest ease is an exploded one. Mothers and old-fashioned teachers were sorrowful and rather hurt spectators of its death throes. The wise mother draws up plans early in the game for the rainy days, and the days when Willie's weak throat keeps him home from school, and Mary's young activity calls for some other outlet than the endless dressing and undressing of her particular doll children. The little hands and brains must be kept not only busy, but entertained. Familiar games grow flat and unprofitable, stories are apt to pall even if they were not open to objection of taking up too much adult time which might be more profitably occupied.

—Put your ad. in the WATCHMAN.



WHEN lunch or supper seems a long time off and you're hungry, eat Uneeda Biscuit. Just enough to satisfy—to keep you going till meal time—but so light and crisp and flaky that they won't spoil your appetite. NATIONAL BISCUIT COMPANY

COMMISSIONERS' SALE OF UNSEATED LANDS.

By virtue of the several Acts of Assembly relative to the sale of Unseated Lands in the County of Centre, for the taxes due and unpaid, the Commissioners will offer the following tracts at public sale at the Court House, at Bellefonte, Pa., Friday, August 25th, 1916, at 10 o'clock A. M. The sale will be adjourned from time to time until all the tracts have been sold. Terms of sale: The purchase price and costs must be paid when the land is stricken off, otherwise it will be put up and sold at an adjourned sale.

Table listing land parcels with columns for Acres Per, Warrantee Name, Supposed Owner Taxes & Costs, and various township names like BENNER, BOGGS, BURNSIDE, CURTIN, FERGUSON, GREGG, HAINES, HALFMOON, HARRIS, HOWARD, HUSTON, LIBERTY, MARION, PATTON, and MILES.

Acres Per. Warrantee Name

Table listing land parcels with columns for Acres Per, Warrantee Name, Supposed Owner Taxes & Costs, and various township names like PENN TOWNSHIP, POTTER TOWNSHIP, RUSH TOWNSHIP, SNOW SHOE TOWNSHIP, SPRING TOWNSHIP, TAYLOR TOWNSHIP, and WALKER TOWNSHIP.

How to Give Children Good Dispositions.

In the "Woman's Home Companion" we learn that to give a baby a good disposition the first step is to keep him free from "nerves." "One mother accounted for her baby's peaceful frame of mind," we read, "by saying that until he was three months old he was ignored! That seems absurd, yet there is an element of truth in it. A baby is an excitable little being. It wants to play and be played with, and it means real self-denial on the part of a household to restrain from kissing and cuddling and romping with the baby.

LIME!

Lime and Limestone For All Purposes. H-O-L-I-M-E Put up in 40 lb. paper bags. For Use With Drill Spreader. High Calcium Central Pennsylvania Lime. Write for Free Literature. American Lime & Stone Co. 61-27-3m General Office: TYRONE, PA.

Niagara Falls

Personally-Conducted Excursions August 4, 18, September 1, 15, and 29 Round \$9.30 Trip FROM BELLEFONTE SPECIAL TRAIN of Pullman Parlor Cars, Restaurant Car, and Day Coaches through the Picturesque Susquehanna Valley Tickets good going on Special Train and connecting trains, and returning on regular trains within FIFTEEN DAYS. Stop-off at Buffalo on return trip. Illustrated Booklet and full information may be obtained from Ticket Agents. Pennsylvania R. R. 61-27-10t

16-DAY SEASHORE EXCURSIONS Atlantic City Cape May, Wildwood, Ocean City, Sea Isle City and Other Resorts SATURDAYS August 5, 19, and Sept. 2 \$8.50 Round Trip 25 cents additional to Atlantic City via Delaware River Bridge Route. Only all-rail line to Atlantic City For details as to time of trains from Bellefonte or stop-over privileges, see Elvers, consultant, Agents. PENNSYLVANIA R.R. 61-28-6t

PAIN Will Improve Anything But the face of a pretty woman for that needs no improvement. Perhaps your house does. If so, we would be glad to estimate on Painting or Paper Hanging no matter how small the job may be—and we will guarantee to do the work right. Our past reputation for good work and our experience gained by 12 years at the business is at your command. FRED DUNZIK Painting and Decorating, Wall Paper and Paint Store. PLEASANT, CAP. PA. BELL PHONE. 61-20-4t

Apply Business Methods In Your Home! A bank account makes for HOUSEHOLD EFFICIENCY AND ECONOMY. When you pay the bills of the grocer, the butcher, the baker by check you know just how much it costs to run your home. BESIDES, A CHECK IS A RECEIPT. If You Haven't a Bank Account Start One Today THE CENTRE COUNTY BANK, BELLEFONTE PA.