

The Awakening of the Older Nations.

New Turkey Offers Rare Opportunities for American Capital—A Use of the Flag That Does Not Redound to Honor of Country.

By WILLIAM T. ELLIS.

Tarsus, Asia Minor.—One of the great gardens and granaries of the world is this famous Cilician plain round which bloom memories of "The glory that was Greece and the grandeur that was Rome."

Today it is of interest as a feature in the new life of awakened Turkey and as a rare field for the employment of American capital and the sale of American goods.

Broadly speaking, the Asia Minor of today mirrors the times of the Bible. There has been little change in two thousand years.

Why Americans Are Favored. Hitherto obligations and finances have gone hand in hand in Turkey's experience with foreigners.

The Bagdad Railway. The Bagdad railway is an illustration of how business and diplomacy go hand in hand.

The ordinary business man, who does not meddle with politics, is content to note that it opens up the fertile plains of the Tigris and Euphrates to the German trader.

But the railway is practically political. Germany says that if New Turkey increases her taxes, as she means to do, the money must be applied to the building of the Bagdad railway.

Apart from the question of mines and railways, and these other larger affairs which are roughly grouped as concessions, there remain smaller enterprises which offer no difficulties to the American business man.

What the Flag Covers. In the case of this "American Line," which is a scandal throughout the Levant, the company ostensibly secured American registration about a year ago in order to escape the Turkish law whereby its ships could be used for the transport of troops.

message which he desired me to convey to the American business men.

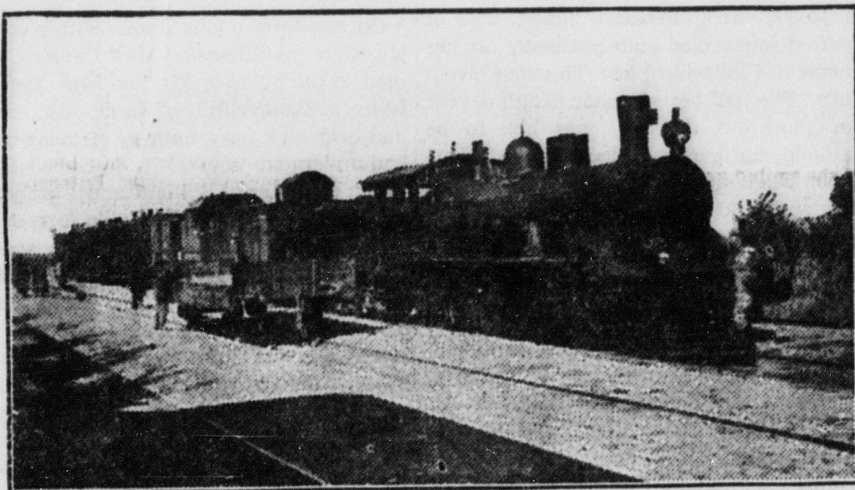
A Governor's Invitation. This district alone needs an investment of five hundred million francs of foreign capital.

"Here in the city of Adana we need to install an electric lighting plant, a tramway system, a water system, a telephone system, and a sewage system.

"Not only will Adana, which has sixty thousand inhabitants, grow to a much larger city, with the advent of the Bagdad railway and the development of our agricultural and cotton industry, but to the east of us on the Cilician plain there should be another city.

The governor went on to talk of the changed order which brings in the new fashions of the western style, making a market for American shoes, American clothes, American tools and many of the accessories of western life.

Where Americans Blush for the Flag. Levantines are keener to see the advantages of trading out here as Americans than are Americans themselves.



Type of Train Used on Bagdad Railway.

think call for vigorous investigation by the government. The flag is flying over enterprises which are not conducted in American fashion, and which bring into disrepute the good name of the nation.

Most conspicuous among these, and of especial interest to Americans just now, because of the shipping subsidy agitation is an "American Line" of steamers which run to Mediterranean ports, flying the American flag.

As far as I can gather from various sources, the company which owns the ships nominally has the majority of its stock in the hands of a Greek merchant of Smyrna, who went to America and became a naturalized citizen, and returned here for the purpose of getting the advantages of American citizenship.

Then Pa Grew Reflective. The Smiths had invited a guest to dinner. As the last course was reached little Willie, who had been closely watching the guest almost continually during the meal, looked over at him once more and said:

They use the American shield on the dress uniform of the ship's officers, but they have distorted it so that the blue field is larger than the red and white stripes and instead of having the field filled with stars, there appears upon it the white Greek cross.

Health is the vital force of woman's attractiveness. When she loses her health she loses her charm. Nothing can simulate the sparkle health gives to the eye, the mirth it lends to the laugh.

Cattle in Passengers' Places. It would be well if they were. When I went aboard the "New Jersey" she was loaded with cargo and well down to the water line.

Passengers on the Bridge. The advent of a first class passenger on this line was evidently unusual. Absolutely no space is provided on deck for first class passengers but I was invited to share the captain's bridge.

Another Blow at the Novelty. It is well to marry the woman you rescue from drowning; the New York Evening Mail asks. The suit for divorce for "incompatibility of temperament," filed at Reno by a woman whom her husband had plucked from the sea at Asbury Park six years before, intimates that it is not well.

Then Pa Grew Reflective. The Smiths had invited a guest to dinner. As the last course was reached little Willie, who had been closely watching the guest almost continually during the meal, looked over at him once more and said:

They use the American shield on the dress uniform of the ship's officers, but they have distorted it so that the blue field is larger than the red and white stripes and instead of having the field filled with stars, there appears upon it the white Greek cross.

Then Pa Grew Reflective. The Smiths had invited a guest to dinner. As the last course was reached little Willie, who had been closely watching the guest almost continually during the meal, looked over at him once more and said:

Then Pa Grew Reflective. The Smiths had invited a guest to dinner. As the last course was reached little Willie, who had been closely watching the guest almost continually during the meal, looked over at him once more and said:

Then Pa Grew Reflective. The Smiths had invited a guest to dinner. As the last course was reached little Willie, who had been closely watching the guest almost continually during the meal, looked over at him once more and said:

Then Pa Grew Reflective. The Smiths had invited a guest to dinner. As the last course was reached little Willie, who had been closely watching the guest almost continually during the meal, looked over at him once more and said:

Then Pa Grew Reflective. The Smiths had invited a guest to dinner. As the last course was reached little Willie, who had been closely watching the guest almost continually during the meal, looked over at him once more and said:

Then Pa Grew Reflective. The Smiths had invited a guest to dinner. As the last course was reached little Willie, who had been closely watching the guest almost continually during the meal, looked over at him once more and said:

Then Pa Grew Reflective. The Smiths had invited a guest to dinner. As the last course was reached little Willie, who had been closely watching the guest almost continually during the meal, looked over at him once more and said:

Then Pa Grew Reflective. The Smiths had invited a guest to dinner. As the last course was reached little Willie, who had been closely watching the guest almost continually during the meal, looked over at him once more and said:

Then Pa Grew Reflective. The Smiths had invited a guest to dinner. As the last course was reached little Willie, who had been closely watching the guest almost continually during the meal, looked over at him once more and said:

Then Pa Grew Reflective. The Smiths had invited a guest to dinner. As the last course was reached little Willie, who had been closely watching the guest almost continually during the meal, looked over at him once more and said:

Health is the vital force of woman's attractiveness. When she loses her health she loses her charm. Nothing can simulate the sparkle health gives to the eye, the mirth it lends to the laugh.

Flour and Feed. CURTIS Y. WAGNER BROCKERHOFF MILLS, BELLEFONTE, PA. Manufacturer, Wholesaler and Retailer of

Roller Flour Feed Corn Meal and Grain. Manufactures and has on hand at all times the following brands of high grade flour:

WHITE STAR OUR BEST HIGH GRADE VICTORY PATENT FANCY PATENT

SPRAY. All kinds of Grain brought at the office. Flour exchanged for wheat.

OFFICE AND STORE—BISHOP STREET, BELLEFONTE, PA. 47-19 MILL AT ROOFSBURG.

The Pennsylvania State College.

The Pennsylvania State College Offers Exceptional Advantages

IF YOU WISH TO BECOME A Chemist A Teacher An Engineer A Lawyer An Electrician A Physician A Scientific Farmer A Journalist

Or secure a Training that will fit you well for any honorable position in life. TUITION IS FREE IN ALL COURSES.

TAKING EFFECT IN SEPT. 1900, the General Courses have been extensively modified, so as to furnish a much more varied range of electives, after the Freshman year, than heretofore, including History; the English, French, German, Spanish, Latin and Greek Languages and Literatures; Psychology, Ethics, Pedagogy, and Political Science.

For specimen examination papers or for catalogue giving full information respecting courses of study, expenses, etc., and showing positions held by graduates, address: THE REGISTRAR, State College, Centre County, Pa.

55-1

Groceries. Groceries.

COFFEE. The coffee market just now is a pretty hard proposition. But we are doing all that it is possible for us to do under present conditions to give our trade good values.

We are selling a good sound coffee and of excellent flavor at 25 cents per pound. This is a GENUINE BARGAIN.

And at 28 c. per pound and 30c. per pound we are giving very high value for the price named. On our tire line of Coffee you will always get better value here for the price charged.

Sechler & Company, Bush House Block, 57-1 Bellefonte, Pa.

Lime and Crushed Limestone.

H-O Increase Your Crops H-O Lime is the life of the soil. USE CENTRAL PENNSYLVANIA LIME

Some Farmers have actually doubled their crops by use of "H. O." lime Drill it for quick results. If you are not getting results use "H. O." lime

We are the largest Manufacturers of Lime in Pennsylvania. Ground limestone and Lime for all purposes.

Works at Bellefonte, Frankstown, Spring Meadows, Tyrone Forger and Union Furnace. Write for literature on lime.

AMERICAN LIME & STONE COMPANY., 55-46m Offices at TYRONE, PA.

ed," are only some of the frequent testimonies to the rejuvenating power of "Favorite Prescription."

—It is almost as great a mistake to feed pigs too much rich foods, particularly corn, as it is to starve them. If the dam is fed on stuff that is purely fattening and without the proper bone-and muscle-building material, the pigs will become soft and flabby and lack stamina.

—Subscribe for the WATCHMAN.

Saddlery.

New Departure in Business. Surely, you must think well of any plan that will save you some dollars on a set of Single Harness.

SCHOFIELD'S MAIL ORDER DEPT. Why send your money away when you can buy at home goods better in quality at less money, with a guarantee to be as represented or money refunded and all freight charges prepaid.

A Set of Harness in Nickle or Imitation Rubber, at..... \$12.85 This harness is equal to any \$15 set on the market.

Genuine Rubber..... \$14.85 which has no equal for less than \$17.

To insure prompt shipment money should accompany order. A cut of the harness will be mailed upon request.

Address all communications to E. N. SCHOFIELD, Mail Order Dept., Bellefonte, Pa. to which he will cheerfully give his prompt attention.

GUARANTEE—The above goods are as represented or money refunded. James Schofield, Spring Street 55-32 Bellefonte, Pa

The Pennsylvania State College.

The Pennsylvania State College Offers Exceptional Advantages

IF YOU WISH TO BECOME A Chemist A Teacher A Lawyer A Physician A Scientist Farmer A Journalist

Or secure a Training that will fit you well for any honorable position in life. TUITION IS FREE IN ALL COURSES.

TAKING EFFECT IN SEPT. 1900, the General Courses have been extensively modified, so as to furnish a much more varied range of electives, after the Freshman year, than heretofore, including History; the English, French, German, Spanish, Latin and Greek Languages and Literatures; Psychology, Ethics, Pedagogy, and Political Science.

For specimen examination papers or for catalogue giving full information respecting courses of study, expenses, etc., and showing positions held by graduates, address: THE REGISTRAR, State College, Centre County, Pa.

55-1

Groceries. Groceries.

COFFEE. The coffee market just now is a pretty hard proposition. But we are doing all that it is possible for us to do under present conditions to give our trade good values.

We are selling a good sound coffee and of excellent flavor at 25 cents per pound. This is a GENUINE BARGAIN.

And at 28 c. per pound and 30c. per pound we are giving very high value for the price named. On our tire line of Coffee you will always get better value here for the price charged.

Sechler & Company, Bush House Block, 57-1 Bellefonte, Pa.

Lime and Crushed Limestone.

H-O Increase Your Crops H-O Lime is the life of the soil. USE CENTRAL PENNSYLVANIA LIME

Some Farmers have actually doubled their crops by use of "H. O." lime Drill it for quick results. If you are not getting results use "H. O." lime

We are the largest Manufacturers of Lime in Pennsylvania. Ground limestone and Lime for all purposes.

Works at Bellefonte, Frankstown, Spring Meadows, Tyrone Forger and Union Furnace. Write for literature on lime.

AMERICAN LIME & STONE COMPANY., 55-46m Offices at TYRONE, PA.

Attorneys-at-Law.

S. KLINE WOODRING—Attorney-at-Law, Bellefonte, Pa. Practices in all courts. Office Room 18 Crider's Exchange. 51-1-ly.

N. B. SPANGLER—Attorney-at-Law, Practices in all the Courts. Consultation in English or German. Office in Crider's Exchange 46-2-ly.

H. S. TAYLOR—Attorney and Counselor at Law, Office, Garman House block, Bellefonte, Pa. All kinds of legal business attended to promptly. Consultation in English or German. 40-49

J. H. WETZEL—Attorney and Counselor at Law, Office No. 11, Crider's Exchange, second floor. All kinds of legal business attended to promptly. Consultation in English or German. 32-4

G. ETTIG, BOWER & ZERBY—Attorneys-at-Law, Eagle Block, Bellefonte, Pa. Successors to Orvis, Bower & Orvis. Practices in all the courts. Consultation in English or German. 50-7

J. M. KEICHLIN—Attorney-at-Law, Practices in all the courts. Consultation in English and German. Office south of court house. All professional business will receive prompt attention. 48-5-ly

Physicians.

W. S. GLENN, M. D., Physician and Surgeon, State College, Centre county, Pa. Office at his residence. 35-41

Dr. J. E. WARD, D. D. S., office next door to Y. M. C. A. room, High street, Bellefonte, Pa. Gas administered for painless extraction of teeth. Superior Crown and Bridge work. Prices reasonable. 52-38

Dr. H. W. TATE, Surgeon Dentist, Office in the Bush Arcade, Bellefonte, Pa. All modern electric appliances used. Has had years of experience. All work of Superior quality and prices reasonable. 45-4-ly

Restaurant.

RESTAURANT. Bellefonte now has a First-Class Restaurant where

Meals are Served at All Hours. Steaks, Chops, Roasts, Oysters on the half shell or in any style desired, Sandwiches, Soups, and anything eatable, can be had in a few minutes any time. In addition I have a complete plant prepared to furnish Soft Drinks in bottles such as

POPS, SODAS, SARSAPARILLA, SELTZER SYPHONS, ETC., for picnics, families and the public generally all of which are manufactured out of the purest syrups and properly carbonated.

C. MOERSCHBACHER, 50-32-ly. High St., Bellefonte, Pa.

Plumbing.

Good Health and Good Plumbing GO TOGETHER. When you have dripping steam pipes, leaky water-fittings, foul sewerage, or escaping gas, you can't have good health. The air you breathe is poisonous; your system becomes poisoned and invalidism is sure to come.

SANITARY PLUMBING is the kind we do. It's the only kind you ought to have. We don't trust this work to boys. Our workmen are Skilled Mechanics no better anywhere. Our

Material and Fixtures are the Best. Not a cheap or inferior article in our entire establishment. And with good work and the finest material, our

Prices are lower than many who give you poor, unsanitary work and the lowest grade of finishings. For the Best Work try

ARCHIBALD ALLISON, Opposite Bush House - Bellefonte, Pa. 56-14-ly.

Coal and Wood.

EDWARD K. RHOADS, Shipping and Commission Merchant, and Dealer in

ANTHRACITE AND BITUMINOUS COALS

CORN EARS, SHELLED CORN, OATS and other grains.

—BALED HAY AND STRAW— Builders' and Plasterers' Sand.

KINDLING WOOD by the bunch or cord as may suit purchasers, respectfully solicits the patronage of his friends and the public, at his Coal Yard, near the Pennsylvania Passenger Station.

Telephone Calls: Central 1312, Commercial 682

Meat Market.

Get the Best Meats. You save nothing by buying poor, thin or gristly meats. I use only the

LARGEST AND FATTEST CATTLE and supply my customers with the freshest, choicest, best blood and muscle making Steaks and Roasts. My prices are no higher than poorer meats are elsewhere.

I always have —DRESSED POULTRY— Game in season, and any kinds of good meats you want.

TRY MY SHOP. P. L. BEEZER, High Street. 43-34-ly. Bellefonte, Pa.