

SCALES OF THE EEL.

They are very minute and resemble Herringbone Brickwork.

BALKED THE BURGLAR.

May or May Not Have Been a Low Down Game, but it Was.

Ancient Inkstands.

An inkstand that was probably in use 3,400 years ago is exhibited in a Berlin museum.

Eased His Conscience.

Dean Buckland when at Westminster used to tell a curious story of a brown paper parcel which he received one day by post.

Making It Clear.

Parson's daughter: "Good morning, Giles! Haven't noticed you in church for the last few weeks."

Advice.

"Now that you've heard my daughter sing, what would you advise me to do?"

His Grievances.

Editor—We are sorry to lose your subscription, Mr. Jackson.

WHEEL PROBLEMS.

Does the Edge of the Wheel Revolve Around the Axle?

"The wheel that turns under the locomotive or the car has a long and queer history," says a writer in the Railroad Man's Magazine.

"The fact that the bottom of an engine wheel always stands still is more easy to learn than the fact that the top of the wheel moves just twice as fast as the train."

Plants Breaking Up an Island.

The layman would scarcely associate great strength with so delicate and fragile a thing as maidenhair fern.

Bathrooms in Paris.

An observant English journalist in Paris has—as a hot weather amusement—made a private census of bathrooms.

He Didn't Know.

"I didn't expect any better treatment than this," said the lady on the pier scantly to the inspector whom she suspected of rudeness.

Evil is wrought by want of thought as well as by want of heart.—Hood.

SIGNATURES ON CHECKS.

The Plainest They Are the Least They Appeal to Forgers.

"You ought to sign your check differently, Mr. Blank," said a Chicago bank employee to a depositor whose account runs well up toward \$100,000 a year.

"Not long ago I had occasion to tell a friend of mine he stood a chance of having some forger get a good sized check in on him."

CAMELS ARE VICIOUS.

They Have Numerous Dislikes, the Chief of Which is Man.

A peculiarity of the camel is his dislikes. Likes he has none, save for the mimosa thorn and, perhaps, for dyes.

As a mount the camel is said to possess distinct advantages. His gait is comfortable when one has learned to ride him, and for really long journeys, which must be made at a slow pace, he is much less tiring than a horse.

Long Arrow Flights.

There was a marvelous archery feat performed some years ago by Sir Ralph Payne Gallwey on the links at Le Touquet.

"Cat!" She Exclaimed.

Nan—Anyway, I don't like his looks. Fan—That's because he looks in my direction rather oftener than he does in yours.—Chicago Tribune.

Hood's Sarsaparilla.

Cause by the wet and changeable weather, especially during this year, because of the debilitating effects of an unhealthily trying summer.

An Enthusiast.

Towne—Oh, yes, he's quite an enthusiast. Brown—Yes; if some one were to send him on a wild goose chase he'd speak of himself afterward as a sportsman.—Catholic Standard.

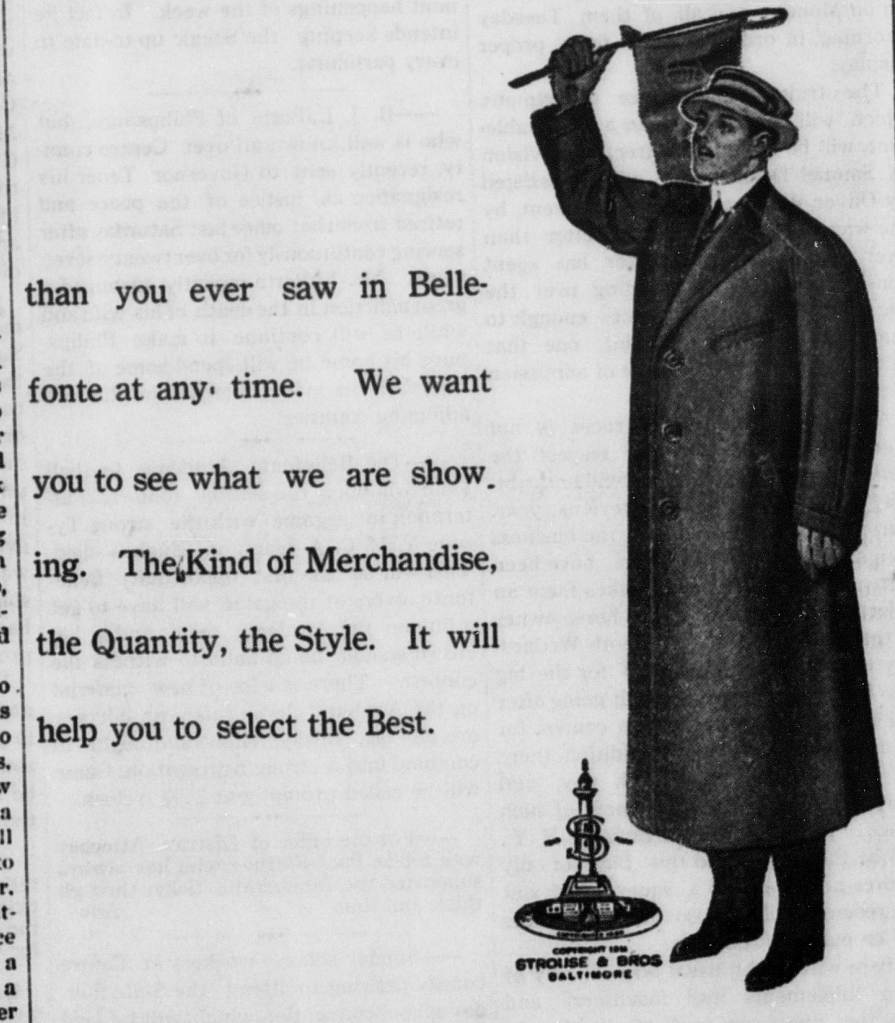
It's Complete!



Our Fall and Winter showing of Clothes for Men and

Boys is at its Best. New Suits, Overcoats, Raincoats, Underwear, Hats. Everything that

MORE AND BETTER



THE SAFEST STORE



for you to trade with in central Pennsylvania. A look is all that's needed. You can't make a mistake. We guard against mistakes, with our guarantee of money back any time you want it. Do you know of a safer way to buy clothes. Let us see you. That's all we ask.

The Fauble Stores Bellefonte, Pa.

The Ignorant Patriot. A very raw recruit was being put through an examination in geography wherein he proved himself astonishingly ignorant.

ail Up With Him. "You had a high old time in Europe?"

Mer Ability. "Are you able to keep your servants any length of time?"

Good Health and Good Plumbing GO TOGETHER.

Material and Fixtures are the Best. Not a cheap or inferior article in our entire establishment.

Prices are lower than many who give you poor, unsatisfactory work and the lowest grade of finishings. For the Best Work try ARCHIBALD ALLISON, Opposite Bush House - Bellefonte, Pa. 56-14-1v.

FINE JOB PRINTING

WATCHMAN OFFICE. There is no style of work, from the cheapest "Dodger" to the finest

BOOK WORK. that we can not do in the most satisfactory manner, and at prices consistent with the class of work. Call on or communicate with this office.

Money to Loan. MONEY TO LOAN on good security and houses to rent. J. M. KEICHLINE, Attorney-at-Law, Bellefonte, Pa. 51-14-1v.

Travelers Guide. CENTRAL RAILROAD OF PENNSYLVANIA. Condensed Time Table effective June 19, 1911.

Table with columns: READ DOWN, STATIONS, READ UP. Includes routes to Bellefonte, Altoona, etc.

Table with columns: WESTWARD, STATIONS, EASTWARD. Includes routes to Altoona, etc.

Table with columns: WESTWARD, STATIONS, EASTWARD. Includes routes to Altoona, etc.

Table with columns: WESTWARD, STATIONS, EASTWARD. Includes routes to Altoona, etc.

BELLEFONTE CENTRAL RAILROAD. Schedule to take effect Monday, Jan. 6, 1910.