

MAKING MAPLE SUGAR.

The Modern Way and the Crude Methods of Early Days.

The sugar season opens a busy industry in Maine, New Hampshire and Vermont.

Sugar making nowadays is a science. Only in the extreme rural sections still remain the wooden buckets and cedar spiles.

No longer are there the crude methods of an open fire, of the kettles strung on green forked poles.

Important changes in the sugar industry have lessened the work of the farmer. In the early days wooden buckets and handmade cedar spiles were used.

As the snow melted the spiles had to be drawn, new holes nearer the ground made and the bucket replaced.

Nowadays the spiles are of metal and the pails are hung on them. The evaporator is a sample of the rapid strides in sugar making facilities.

Occasionally a tree runs a bucket full every fair day during the season. An average of ten quarts, although the general run is about half that amount.

Good, honest, sirup weighs eleven pounds to the gallon, and it takes a barrel of thirty-two gallons of sap to make a gallon of sirup.

THE MAGNETIC COMPASS.

First Used on European Vessels in the Twelfth Century.

Some Asian people, perhaps the Chinese, discovered many centuries ago that a kind of iron ore possessed a very peculiar quality. We call this ore magnetic ore, or, in more common language, lodestone, and it is very widely distributed.

It is an open question whether the Chinese utilized the directive power of the lodestone, but it is certain that the first rude compass was not used on European vessels before the twelfth century of our era.

Miraculous Multiplication. A lady who recently bought a dinner service consisting of fifty-four pieces for \$1.35, was informed by her housemaid the next day that the bargain had become still more wonderful.

Disappointing. Mrs. Justlooking—Have you any hand embroidered waists? Salesman (who has waited on her before)—I'm very sorry to disappoint you, madam, but we have.—Chicago News.

Colleges & Schools.

IF YOU WISH TO BECOME.

- A Chemist, A Teacher, An Engineer, A Lawyer, An Electrician, A Physician, A Scientific Farmer, A Journalist.

NOTE: If you wish to secure a training that will fit you well for any honorable pursuit in life.

THE PENNSYLVANIA

STATE COLLEGE

OFFERS EXCEPTIONAL ADVANTAGES.

TUITION IS FREE IN ALL COURSES.

CAUSING EFFECT IN SEPT. 1906. The General Courses have been extensively modified, so as to furnish a much more varied range of electives, after the Freshman year, than heretofore.

YOUNG WOMEN are admitted to all courses on the same terms as Young Men.

THE FALL SESSION opens September 15th, 1906.

For specimen examination papers or for catalogue giving full information respecting courses of study, expenses, etc., and showing positions held by graduates, address

Shooting Down the Alps on Skies.

The quest for a moral is provoked by a long list of skeeving accidents in the Alps. In itself the exercise can hardly be considered more perilous than skating.

Sufficiently Identified.

She walked into a branch bank on upper Broadway and pushed a check through the paying teller's window.

"You don't know you, madam," said he. "I don't know you, madam," said the woman.

"Here's your money, madam," said the paying teller. And she took it and went.—Everybody's Magazine.

Where Lincoln Put the Whetstone.

A soldier at whose house when a boy Lincoln paused in his tramps in Illinois and who lent him a whetstone to sharpen his jackknife met him during the war in Washington.

"No, no! I put it on top of the gatepost—that high one." "Mebbe you did. Nobody else could have reached it, and none of us ever thought to look there for it." There it was found where it was placed fifteen years before.

Why He Wanted a Pass.

When Jim Fisk was in his glory as a railroad magnate one day he was greatly annoyed by people asking for passes over his road for all sorts of reasons.

A Couple of Bulls.

On the edge of a small river in County Cavan, Ireland, is a stone with this inscription: "When this stone is out of sight it is not safe to ford the river."

Natural Fitness.

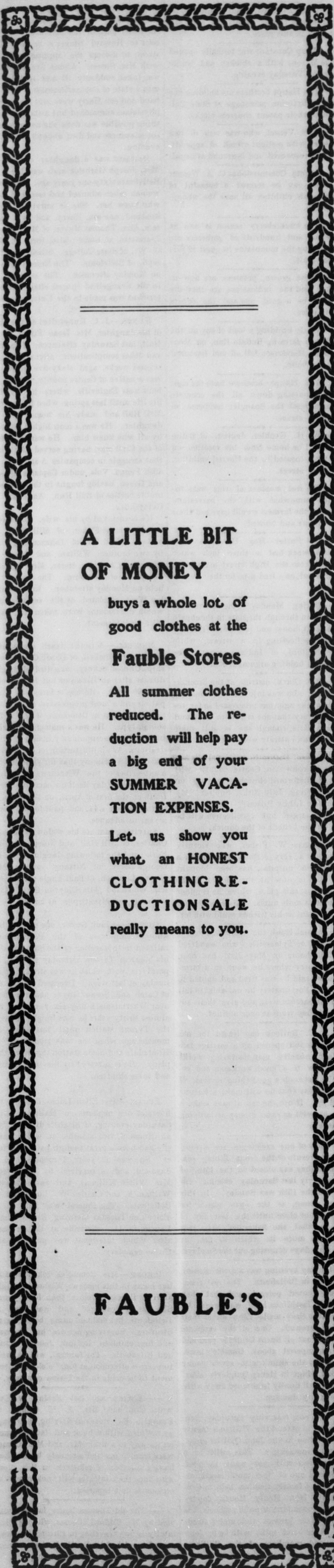
"My friend," said the man who was getting out of the barber's chair with a slashed cheek, "you have enlightened my mind on a point that has hitherto been a mystery."

Her Divorce Portion.

"Mrs. Jones just got a divorce from her husband for throwing salad in her face," said one.

Do not try to drive your employes ahead of you, but keep ahead of them and invite them to come on.—Success Magazine.

Faibles Great Clothing House.



A LITTLE BIT OF MONEY

buys a whole lot of good clothes at the

Fauble Stores

All summer clothes reduced. The reduction will help pay

a big end of your SUMMER VACATION EXPENSES.

Let us show you what an HONEST CLOTHING REDUCTION SALE

really means to you.

FAUBLE'S

CONTROL OF ENERGY.

Is it Possible For the Human Race to Avert Extinction?

The only conceivable way in which the human intelligence can ever succeed in averting the "procession of the great year" is not by postponing the issue, but by reversing the process.

Thackeray and Dickens.

This is the way George Henry Lewes once characterized Thackeray and Dickens in the way of service to a friend: Dickens, he said, would not give you a farthing of money, but he would take no end of trouble for you.

A Too Familiar Snake.

Seeing snakes is a common experience with the inhabitants of India and one unconnected with any suggestions of bibulousness.

CASTORIA

For Infants and Children.

The Kind You Have Always Bought

Bears the Signature of

CHAS. H. FLETCHER.

Travelers Guide.

CENTRAL RAILROAD OF PENNA.

Condensed Time Table effective Nov. 6, 1905.

Table with columns: READ DOWN, Stations, READ UP. Lists stations like Bellefonte, Hixson, etc.

(N. Y. Central & Hudson River R. R.)

Table with columns: No. 1, No. 2, No. 3, Stations, No. 4, No. 5, No. 6. Lists routes like Jersey Shore, etc.

BELLEFONTE CENTRAL RAILROAD.

Schedule to take effect Monday, May 29, 1905.

Table with columns: WESTWARD, STATIONS, EASTWARD. Lists stations like Bellefonte, etc.

Attorneys-at-Law

J. C. MEYER—Attorney-at-Law Rooms 400 & 21, Crider's Exchange Bellefonte, Pa. 49-44

B. SPANGLER—Attorney-at-Law, Practices in all the courts. Consultation in English and German. Office in the Eagle building Bellefonte, Pa. 49-22

H. S. TAYLOR—Attorney and Counselor at Law. Office No. 24, Temple Court fourth floor, Bellefonte, Pa. All kinds of legal business attended to promptly. 49-48

K. LINE WOODRUM ATTORNEY-AT-LAW Bellefonte, Pa. Practices in all the courts. 51-17

W. C. HEINLE—Attorney at Law, Bellefonte, Pa. Office in Hale building, opposite Court House. All professional business will receive prompt attention. 39-13

J. H. WETZEL—Attorney and Counselor at Law. Office No. 11, Crider's Exchange, second floor. All kinds of legal business attended to promptly. Consultation in English or German. 39-4

G. TITIG, BOWER & ZEBBY—Attorneys-at-Law, Eagle Block, Bellefonte, Pa. Successors to Orris, Bower & Orris. Practices in all the courts. Consultations in English or German. 39-7

J. M. KEICHLIN—ATTORNEY-AT-LAW—Practices in all the courts. Consultation in English and German. Office south of Court house. All professional business will receive prompt attention. 49-6-12

Physicians.

W. S. GLENN, M. D., Physician and Surgeon, State College, Centre county, Pa., Office at his residence. 35-41

Dentists.

D. R. H. W. TATE, Surgeon Dentist, office in the Bush Arcade, Bellefonte, Pa. All modern electric appliances used. Has had years of experience. All work of superior quality and prices reasonable. 45-6-17

Meat Markets.

GET THE BEST MEATS. You save nothing by buying, poor, thin or gristy meats. I use only the LARGEST, FATTEST, CATTLE, and supply my customers with the freshest, choicest, best blood and muscle making Steaks and Roasts. My prices are no higher than poorer meats are elsewhere. I always have DRESSED POULTRY, Game in season, and any kinds of good meats you want. Far Mr Suop. P. L. BEZZER. High Street, Bellefonte 49-34-17

SAVE IN YOUR MEAT BILLS.

There is no reason why you should use poor meat, or pay exorbitant prices for tender, juicy steaks. Good meat is abundant hereabouts, because good cattle sheep and calves are to be had. WE BUY ONLY THE BEST and we sell only that which is good. We don't promise to give it away, but we will furnish you GOOD MEAT, at prices that you have paid elsewhere for the poor. GIVE US A TRIAL— and see if you don't save in the long run and have better Meats, Poultry and Game (in season) than have been furnished you. GETTIG & KREAMER Bellefonte, Pa. Bush House Block 44-18

New Advertisements.

DR. J. JONES VETERINARY SURGEON.

A Graduate of the University of London has permanently located at the PALACE LIVERY STABLES, Bellefonte, where he will answer all calls for work in his profession. Dr. Jones served four years under State Veterinarian Surgeon Veterinary Office by telephone will be answered promptly day or night. 50-5-17

IF YOU WANT TO SELL

standing timber, sawed timber, railroad ties, and chemical wood.

IF YOU WANT TO BUY

lumber of any kind, worked or in the rough, White Pine, Chestnut or Washington Red Cedar Shingles, or kiln dried Millwork, Doors, Sash, Plastering Lath, Brick, Etc. Go to P. B. CRIDER & SON, Bellefonte, Pa. 48-18-17

BOARDING.—Parties visiting Philadelphia can have first-class board and all accommodations six squares from business centre of city. Terms \$1.25 and \$1.00 per day. Special rates by the week. (Formerly of Bellefonte.) Mas. E. EDWARDS, 1606 Green St., Philadelphia 35-1*

Best Route to the Northwest.

In going to St. Paul, Minneapolis or the Northwest see that your ticket west of Chicago reads via The Pioneer Limited on the Chicago, Milwaukee & St. Paul Railway—the route over which your letters go. Standard and compartment sleepers with longer, higher and wider berths. Leaves Union Station, Chicago, 6.30 p. m. daily; arrives St. Paul next morning at 7.25 and Minneapolis at 8.00 o'clock.

JOHN R. POTT, District Passenger Agent, Room D, Park Building, Pittsburgh.

Fine Job Printing.

FINE JOB PRINTING

—A SPECIALTY— AT THE WATCHMAN OFFICE.

There is no style of work, from the cheapest Dodger to the finest

—BOOK-WORK— that we can not do in the most satisfactory manner, and at Prices consistent with the class of work. Call on or communicate with this office.