

THERE'S
SOMETHING
ABOUT

SIM'S CLOTHES

By which you can identify them more certainly than by the label. It goes into them before the label. Its a style, a quality, a Tailoring-by-hand touch to them, a harmony of fabrics, linings, etc., A THOROUGHbred LOOK ABOUT THEM, almost never found in other ready made clothes. The fact that we can't describe it don't make it any less real. You can see it without fully realizing what it is. We can't show it or tell you fully about it until you wear the clothes—then we don't need to. Its one of the things that makes Sim's hand-tailored clothes more valuable to the wearer than the ordinary ready made.

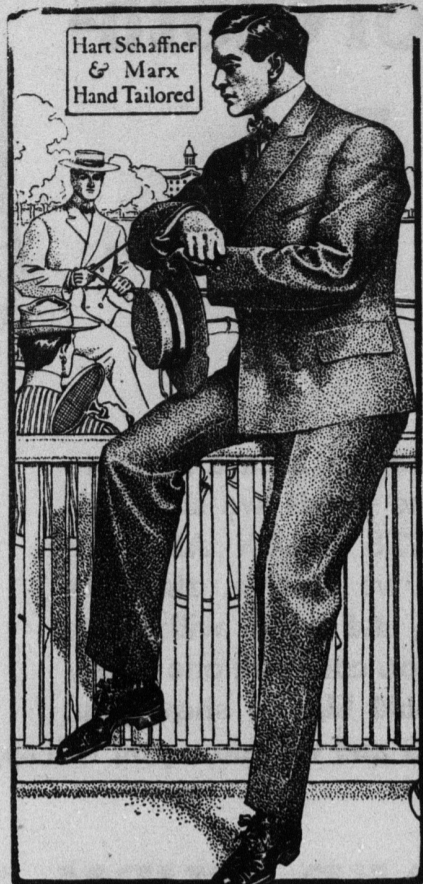


Copyright 1915 by Hart Schaffner & Marx
DRAWN FROM LIFE
A wearer of THE CLOTHES WE SELL. It shows how our clothes look. No need to make the pictures better than the clothes.

We have Furnishings—Hats, Shirts, Neckwear—as well as the clothes to put you in the front rank on the Easter day parade of good dressers.

Sim, the Clothier.

Bellefonte's Largest Clothing Store.



Copyright 1915 by Hart Schaffner & Marx
DRAWN FROM LIFE
A wearer of THE CLOTHES WE SELL. It shows how our clothes look. No need to make the picture better than the clothes.

OAK GROVE!

THE CITY OF SHOPS AND
BUSY RAILROAD CENTRE.

First Year's Work Now Completed,
Second One Begun, Third Will
Complete The Shops.

Buy a lot there now and grow wealthy with the growth of the place. 4000 men to find employment in two years. Over 300 office men and 1200 other employes removed Oak Grove already. Several hundred houses and business places have sprung up since July last. Great building boom on for Spring.

Opportunity Knocks at a Man's Door
but Once in a Life Time. It
Knocks at Your Door Now.

Statistics prove that 90 per cent. of all the money made in industrial centres is made from real estate. No man can find excuse for not having a home, where employment is certain and permanent and wages the highest with no Company Store to impoverish.

These Railroad Shops will build a city of 20,000 in five years. Charters are granted for Electric Lights, Gas, Mountain Water and Trolley Line. We have the

Rogers & Hamilton High Ground Lots
Right at Oak Grove Station,

in finest view of Shops, Valleys, Station, Etc., and lies on the West Side, free from all prevailing clouds of smoke and safely above the well known flood district. Coming industries close to these lots. Do you want to reap the benefit of others' efforts? All we ask you to do is investigate. If we can not make you 100 per cent. in three years, do not invest. WE WILL PAY THE RAILROAD FARE of any purchaser within a HUNDRED MILES of OAK GROVE. Write us. Send us first payment. We will select a fine lot for you, will exchange this lot for any unsold lot of equal price or return the money if you are dissatisfied. You can pay for a lot out of the money spent foolishly. We prefer to show our lots during the wet season of the year.

Price of Lot Range from \$50 Up

TERMS: 5 per cent. down, 5 per cent.
a month until the lot is paid for.
Interest only on deferred payments.

Only \$5.00 a month on a \$100.00 lot; \$10.00 a month on a \$200.00 lot; \$15.00 per month on a \$300.00; \$20.00 on a \$400.00 lot and so on.

CALL ON J. P. STAVER OR MATT SAVAGE, CLEARFIELD, PA., OR WRITE

Staver & Savage,

Centre Oak, Clinton Co., Pa.
Office right at the Station.