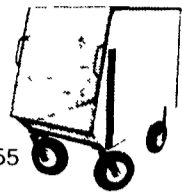


TAKE THE TROUBLE OUT OF HANDLING FEED!

Model #50
18 BU



Model #55
38 BU



Model #35
7 BU



All carts come standard with ball bearing pneumatic tires, protective steel edging, and front swivel wheels. Custom sizes are available.

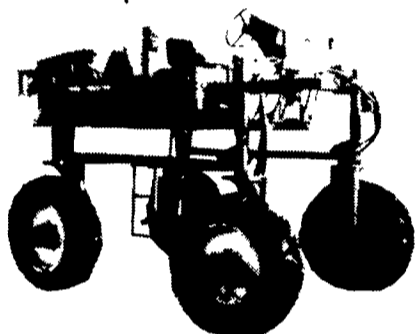
Dealer
Aaron, Groff, & Son
800-468-4909
717/354-4631

MFG By
A & D MFG.
David S. Fisher
345 Centerville Rd
Gardenville PA 17529

Dealer
Esh Farm Supply
Ronks, PA

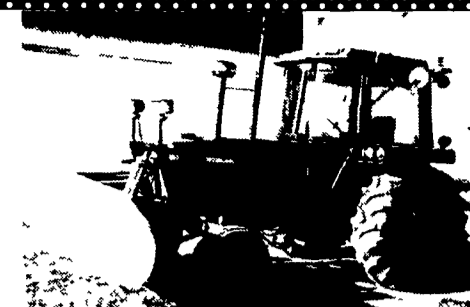
PLAIN VIEW Farms

25840 Worton-Lynch Rd.
Worton, Maryland 21678
(410) 778-1065



Hi-Clearance Machines
4 Models For Various Applications
Hagie 470 shown.
72 inch row height
58 inch belly
\$3500 FOB

Website: www.plainviewfarms.com



JD 2555, Hi-Lo Shift, 2,400 Hrs., 8 Ft. Hyd. Angle Blade \$18,500

- Case IH MX170, **SOLD** 4x4, 18 42, Wts, 905 Hrs \$55,000
- Case IH CX70, 2 **SOLD** ab & Air \$19,000
- Case IH 5250, Pwr Shift, 4x4, Cab & Air Coming In
- Case IH 5250, 4x4, Pwr Shift, Ldr \$32,000
- Case IH 7250, 1994, 215 HP, Duals, 5,300 Hrs \$46,000
- Case XT75 Skid Steer, 600 Hrs \$17,500
- IH 1256, Fender \$8,500
- Deutz Allis 6250, **SOLD** Ldr \$15,500
- NH 9030, 4x4, Cab & Ldr Coming In
- NH TC40D, Hydro, 4x4 w/Ldr \$17,000
- JD 7410, Pwr Shift, 4x4, Cab, w/740 Ldr \$44,000
- JD 2555, Cab & Air w/7' Angle Blade \$18,500
- JD 2950, **SOLD** \$9,500
- JD 4440, Cab & Air, Quad Shift \$18,800
- JD 4240, Quad Shift, Cab & Air \$18,300
- JD 2440, Late Style, Hi Low Shift \$8,800
- JD 8875, Skid Loader, Low Hrs \$15,000
- MF 8120, 4x4, Cab & Air Coming In
- MF 6180, 4x4, Cab & Air Coming In
- MF 2640, 4x4, Cab & Air Coming In
- MF 4840 4x4, Dual **SOLD** PTO \$12,000
- MF 3140, Cab & Air \$15,500
- MF 180, Dsl, Multi Pwr \$4,400
- MF 255 Diesel w/236 Ldr \$6,500
- Farnall A w/Cultivator Hand Lift, Nice \$1,200
- Ford 5030 w/Ldr Shuttle Shift \$14,000
- Clark 6 000 Lb Forklift, Good Condition \$8,500
- JD 7000 GR Conservation Planter Lq \$3,700
- MF 18 Hyd Fold Field Cultivator, Danish Tines \$1,400
- 10 Ton Feed Bin **SOLD** \$100

Financing Available

LLOYD M. BURKHOLDER
170 Cocalico Creek Rd Ephrata, PA 17522
Between Brownstown & Rothsville
717-859-6616

USED SKID LOADERS

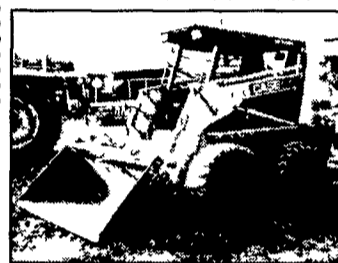
- NH L785, w/Perkin Engine, New Tires \$7,500
 - 2000 NH LS 160, 1,005 Hrs . . . \$12,500
 - 1200 Thomas \$2,500
- Coming In...
• 2040 Mustang

Skid Loader Attachments

- IN STOCK -**
- Snow Buckets
 - Up To 96" Wide
 - Dirt Buckets, Utility Buckets, Pallet Forks, Root Grapples

GD Equipment

414 Rowe Rd., Shippensburg, PA
717-530-0170



Case 1845C skid loader, 3200 Hrs \$8,900

Tractors & Skid Loaders

- Yanmar B37 Mini Excavator New Rubber Tracks 2300 Hrs \$9,800
- IH 1066 Fender Tractor new TA 160 hp runs good \$8,500
- Case 1070 C A H PS 4500 Hrs Black Knight \$6,500
- JD 6300 2WD PQ 7800 hrs, looks/runs good \$14,500
- Yanmar B12 Mini Excavator Rubber Tracks 1600 Hrs \$6,500

Hay and Forage

- 2) Badger 1055 forage wagons hyd drive tandem gears \$3,500/ea.
- JD 3970 chopper green spout long tongue \$6,000
- JD 3RN green corn head \$3,500
- JD 7 green p/u head \$2,500
- Ford NH 415 Discbine 2PTH Good Cond \$4,800
- Victor 200 Blower Same As Miller Pro Low Wear \$3,500
- NH 8 3 PT Disc Mower \$1,250
- Case IH 5420 Baler W/Hyd Drive Thrower Low Wear \$3,500
- JD 700 V-Fold Roller Bar Rake \$3,500
- Vermeer V-Fold Roller Bar Rake \$2,500
- Miller Pro 5200 Forage Wagon 16 14 Ton Tandem Gear \$6,500
- NH 818 Forage Wagon 18 14 Ton Tandem Gear \$5,200
- Hesston 4550 center line baler hyd tension hyd drive thrower \$5,200
- Case IH 600 blower late style \$1,800
- (2) Badger 1050 Forage Wagons 14 Ton Tandem Gears Low Wear \$5,000/ea
- JD 3RN Corn Head **SOLD** \$1,600
- JD 7 Pick Up Head, \$1,500
- (2) Fiat NH 166 inverter w/extension like new \$4,900
- (2) Ford NH 166 inverter w/extension \$3,900
- Fiat NH 1411 discbine used 1 season like new \$10,900
- CIH 3 row cornhead (new) for 8750 \$3,500
- Gehl 1265 chopper tandems metal alert 7 ft hayhead \$4,500
- JD 338 baler Hyd tension elect controls 40 thrower \$6,500
- CIH 8360 12 ft Hydro Swing haybine \$2,500
- Hesston 1160 12 ft Hydro Swing haybine \$2,500
- CIH 8430 Rd Baler 4x5 Electric late model \$5,900
- JD 7 ft pickup head all new teeth \$1,800
- Fiat NH 1431 discbine 13 ft center pivot \$9,800
- Hesston 530 Rd Baler Manual Tie \$4,500
- JD 100 blower (same as NH28) \$850
- Gehl 1580 blower 1000RPM \$1,500

Tillage and Planting

- JD 215 Dura Cushion Disc, 12' \$2,900
- Case IH 3800 Rock Flex Disc 12' Low Wear \$5,200
- AC 12 ft field cult \$750
- Vicon S tine field cult 3pt w/rolling basket \$1,250
- CIH 900 4RN cornplanter new monitor \$2,400



AG Gator, 4x4, articulate steering, w/wet lime spreader \$6,500

Misc. Equip

- Schuler BF175 feeder wagon low wear **SOLD** \$2,200
- Gehl 8285 mixer wagon digital scale low wear \$4,900
- IH 550 spreader top beater, slop pan \$2,200
- CIH 575 spreader tandems top beater \$4,200

James Burkholder
185 Willis Rd., Newville, PA 17241
717-776-4261

We take pleasure in saying

THANK YOU

To all our valued customers & friends for your support in 2003 and the past 37 years.

We appreciate your equipment & parts purchases and allowing us to service your equipment.

We hope you will allow us to serve you in 2004 and in the years following.



NEW HOLLAND

Simplicity

Walk Behind Snow Blowers

Derby

Commercial Mowers



Tractors



Have a Happy & Prosperous 2004

Henry • Ellis • Clayton • Brent • Stephanie • Guy • David • Richard • Adam

Open Wednesday, December 31, 2003- 7:30 A.M.-4 P.M.

Closed Thursday, January 1, 2004

QUALITY USED EQUIPMENT FOR SALE

- (3) NH LS150 Skid Loaders

HARVESTING EQUIPMENT

- NH 790 Harvester **SOLD** alert@ 890W Hay Pickup
- Gehl 1060 Harvester w/3RN Corn Head & 7' Hay P/U
- NH 824 2RN Corn Head

TILLAGE

- Oliver 546 6-Bottom Plow
- AMCO 12 Ft Disc Harrow (New)
- Yetter 12 Ft Rotary Hoe

HAY EQUIPMENT

- Case IH 8340 Mower Conditioner
- Hesston 1070 Mower **SOLD** her
- NH 492 Haybine
- NH 1465 Haybin
- NI 405 Rake
- NH 56 **SOLD**
- NH 648 Round Baler, Silage Special w/Bale Slicer
- Pequea 710 Tedder
- Grimm S8 Hay Tedder

"PRE-SEASON REPAIR DISCOUNT" – 10% DISCOUNT ON New Holland, AGCO Allis & Simplicity Parts or 10% OFF Labor on Other Brand Equipment for Work Scheduled Between Now & December 31, 2003

BHM FARM & LAWN EQUIPMENT

SALES - PARTS - SERVICE

Route 934 - 2 Miles North of Annville, PA

Telephone 717-867-2211

We Ship Parts Anywhere!