

New Wilmington Livestock

New Wilmington, Pa.
Report Supplied By PDA
Monday, December 22, 2003

CATTLE 185 PDA Compared with last week's sale lean cows steady, Boner and Breakers 2 00 to 4 00 higher
STEERS few Choice 1-3 1150-1235 lbs 91 00-96 50, few Select 1-2 82 00-84 00, few Standard 1-2 58 50-79 00
HOLSTEIN STEERS few Select 1-2 60 50-64 00, few Standard 1-2 55 50-60 00
HEIFERS Choice 1-3 1100-1430 lbs 88 00-94 00, Select 1 2 80 00-87 50
COWS Breakers 75-80% lean 53 00-68 00 mostly 55 00-62 00, Boners 80-85% lean 45 00-52 00, Lean 85 90% lean 40 00-47 00 Shells 39 50 and down
BULLS few Yield Grade 1 1390-2090 lbs 59 50-67 00, few Yield Grade 2 1040-1480 lbs 50 00-56 50
FEEDER CATTLE STEERS one Medium 1 490 lbs 71 00, few Large 2 340-360 lbs 62 00, Heifers few Medium 1-2 290-525 lbs 65 00-76 00, BULLS Medium 1-2 370-510 lbs 55 00-73 00
CALVES 136 All calves sold per cwt VEALERS Standard and Good 70-115 lbs 20 00-45 00, Utility 50-80 lbs 10 00-20 00 FARM CALVES No 1 Holstein bulls 95-115 lbs 130 00-137 50, No 2 80-120 lbs 40 00-120 00, few No 1 Holstein heifers 90-115 lbs 400 00-475 00, one No 2 90 lbs 275 00
Few beef cross bulls and heifers 70-120 lbs 50 00-155 00
HOGS 79 Barrows and gilts 2 00 to 3 00 higher BARROWS AND GILTS 2 lots 49-54% lean 240-260 lbs 48 50 & 49 50, 45-50% lean 230-270 lbs 40 50-45 00, 40-45% lean 220-270 lbs 38 00-40 00
SOWS 1-3 380-515 lbs 22 50-30 00
BOARS one 500 lbs 1 00
FEEDER PIGS 17 50-60 lbs 12 50-18 00 per head
SHEEP 69 SLAUGHTER LAMBS Choice 50-75 lbs 117 50-140 00, 75-100 lbs 100 00-129 00, 100-130 lbs 70 00-100 00, Good and Choice 60-75 lbs 67 50-75 00 SLAUGHTER SHEEP 20 00-45 00
GOATS 10 All sold by the head with weights estimated Kids Selection 2 couple 40-60 lbs 35 00 Selection 3 20 and under 5 00 & 15 00 Nannies couple 80 & 85 lbs 45 00 & 67 50 Billies one 85 lbs 92 50

Pa. Weekly

13 Livestock Auctions
Friday, December 19, 2003
Report Supplied By PDA

111 LIVESTOCK AUCTIONS
CATTLE 5559 Compared with 4887 last week and 5606 head a year ago Compared with last week's summary sl steers dropped 4 00 to 5 00 lower with Holsteins 50 to 1 00 lower, sl heifers steady to weak, sl cows mostly 1 00 to 3 00 lower, bulls were steady
STEERS High Choice and Prime 2-4 100 00-106 00, Choice 1-3 92 50-99 00, Select and Low Choice 2-3 93 50-97 75, Select 1-3 85 00-91 00, Standard 1-2 62 00-73 00
HOLSTEIN STEERS Choice 2-3 87 25-92 50 Select 1-2 70 50-84 50, Standard 1-2 53 00-63 50
HEIFERS Choice few Prime 2-4 92 00-100 50, Select 1-3 87 00-92 50, Standard 1-2 56 00-63 00
COWS Breakers 75-80% lean 48 00-59 50, Boners 80-85% lean 42 75-53 00, Lean 85-90% lean 37 00-48 50 Shells 37 00 and down
BULLS Yield Grade 1 1000-2500 lbs 56 00-65 50, Yield Grade 2 900-2400 lbs 50 00-57 50
FEEDER CATTLE STEERS Medium and Large 1 300-500 lbs 80 00-91 50, 500-700 lbs 80 50-90 00, Medium and Large 2 500-700 lbs 60 00-72 50, Large 3 500-700 lbs Holsteins 49 00-65 00, HEIFERS Medium and Large 1 300-500 lbs 72 00-93 00, 500-700 lbs 70 00-76 00, Medium and Large 2 500-700 lbs 59 00-71 00, BULLS Medium and Large 1 500-700 lbs 71 00-87 00, 300-500 lbs 71 00-86 00
CALVES 3620 Compared with 3043 head last week and 3424 head a year ago Vealers steady to weak VEALERS Standard and Good 60-120 lbs 40 00-70 00, Utility 60-100 lbs 10 00-40 00 FARM CALVES. Holstein bull calves 5 00 to 10 00 higher, Holstein heifers sold steady. No 1 Holstein bulls 90-120 lbs 120 00-160 00, 80-85 lbs 90 00-135 00, No 2 Holstein bulls 80-120 lbs 60 00-130 00, No 1 Holstein heifers 90-120 lbs 370 00-480 00, No 2 70-120 lbs 100 00-315 00
Beef type bulls and heifers 80-110 lbs 70 00-132 00
HOGS 977 Compared with 981 head last week and 1164 head a year ago Barrows and gilts mostly steady with 40-45% hogs 1 00 to 2 00 lower BARROWS AND GILTS 49-54% lean 220-275 lbs 38 50-40 50, 45-50% lean

225-280 lbs 36 75-38 00, 40-45% lean 240-300 lbs 28 00-31 25.
SOWS 1-3 300-500 lbs 25 75-32 00, 500-700 lbs 32 00-34 00.
BOARS 11 00-13 75
FEEDER PIGS 253 Compared with 205 head last week and 457 head a year ago US 1-3 25-45 lbs 19 00-35 00, 50-65 lbs 36 00-38 00 — per head
SHEEP 2361 Compared with 2319 head last week and 3582 head a year ago Slaughter lambs 10 00 to 15 00 higher SLAUGHTER LAMBS Choice 20-40 lbs 165 00-225 00, 40-60 lbs 128 00-164 00, 60-80 lbs 117 00-148 00, 80-100 lbs 108 00-135 00, 100-125 lbs 99 00-106 00 Good and Choice 50-90 lbs 80 00-115 00
SLAUGHTER SHEEP 25 00-65 00
TWO GRADED FEEDER PIG SALES 2511 Compared with 1041 head last week and 3392 head a year ago Feeder pigs under 50 lbs sold 25 00 to 50 00 higher with heavier pigs selling uneven with the majority of feeders going for slaughter US 1-2 20-24 lbs 192 50-285 00, 25-29 lbs 129 00-205 00, 30-39 lbs 113 00-170 00, 45-50 lbs 75 00-102 00, 50-60 lbs 47 00-70 00, 60-70 lbs 46 00-75 00

65 00-100 00, HOLSTEIN HEIFERS +N1 96 1 BS AT 440 00, 1 126 LB AT 355 00, +N2 116 1 BS AT 210 00, 70-85 LBS 150 00-160 00, BEEF X BULLS AND HEIFERS, STRONG DEMAND! +N1 90-115 LBS 150 00-175 00, FEW 117 00-130 00
BUTCHER HOGS 12 HEAD +N1 AND 2 250-300 LBS 38 50, +N2 AND 3 300-450 LBS 29 00-33 00
SOWS 20 HEAD 300-500 LBS 30 00-34 00, 500-700 1 BS 24 00-28 00
BOARS 292 1 BS AT 18 00
STOCK CATTLE 35 HEAD STEERS 400-600 LBS 77 00-83 00, 1 750 LB AT 72 00
HEIFERS 300-500 LBS 72 00-80 00
BULLS 400-500 LBS 83 00-90 00, 500-700 1 BS TO 71 00
LAMBS CHOICE 110 LBS AT 99 00, GOOD 58 LBS AT 88 00
GOATS 12 HEAD LARGE WETHER AT 77 00, MEDIUM 45 00 60 00, FIFTEEN KIDS TO 47 00
PIGS AND SHOATS 136 HEAD, MAINLY CULLS BY THE HEAD 20-40 LBS 5 00-14 00, 40-60 LBS 18 00-20 00, 60-80 LBS TO 24 00

Grantsville Livestock

Grantsville, Maryland
Report Supplied by Auction
Saturday, December 20, 2003

STOCK STEERS AND BULLS 200-500 lbs 64 00-94 50
STOCK HEIFERS 60 00-89 00
SLAUGHTER STEERS Good to Choice 70 00-84 00, Medium to Good 45 00 69 50
HOLSTEIN STEERS Good 44 00-64 00 Light 46 00-61 00
SLAUGHTER HEIFERS Good to Choice 73 00-78 00, Medium to Good 50 00-72 00
BULLS Heavy 47 00-58 50 Light 40 00 58 00
COWS Utility Holsteins 40 00-51 50 Canners 35 00-39 00, Culls 35 00 and down
BOB CALVES 40 00 and down
HOLSTEIN BULL CALVES RETURN TO FARM 90-120 lbs Up to 100 00
HOLSTEIN HEIFER CALVES RETURN TO FARM Up to 225 00
BEEF CROSS CALVES RETURN TO FARM Up to 145 00
HOGS Top Quality up to 46 00, Heavy up to 44 50, Light 25 00-40 00, FEEDER PIGS, BY HEAD Up to 30 00
SOWS 20 00-34 50
MALT HOGS 3 50-21 00
LAMBS 70-85 lbs up to 155 00, 85-125 lbs up to 109 00, 30-60 lbs up to 145 00, Culls up to 90 00
SHEEP Up to 40 00, FAT UP TO 35 00
GOATS Large 55 00-155 00, Medium 25 00-83 00, Small 10 00-51 00, all by the head, kid 3 00-50 00
No Sale Dec 27 Sale as usual Jan 3

Four States Livestock

Monday Sale

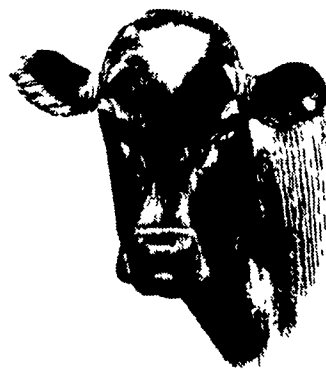
Hagerstown, Md.
Report Supplied By Auction
December 22, 2003

SLAUGHTER COWS 79 HEAD, STEADY TO 1 00 LOWER BREAKERS 49 00-55 00, BONERS 46 00-51 00, LEAN 40 00-46 00, THIN AND LIGHT 40 00 DOWN
BULLS YG+N2 1148 LBS AT 52 00
FED STEERS STEADY PRICES HIGH CHOICE 2-4 1200-1475 LBS 94 00-96 00, CHOICE 2-3 91 00-94 00, LOW CHOICE 1198 LBS AT 90 75.
FED HEIFERS HIGH CHOICE TO PRIME 1150-1400 LBS 94 00-98 00, HIGH CHOICE 2-3 90 00-94 00, LOW CHOICE 86 00-90 00
CALVES 117 HEAD LOW CHOICE 278 LBS AT 81 00, GOOD 80-110 LBS 25 00-35 00, 60-80 LBS 15 00-25 00, HOLSTEIN BULLS RETURNING TO FARM, STEADY PRICES +N1 95-120 LBS 140 00-172 00, 86-94 LBS 115 00-132 00, +N2 95-120 LBS 105 00-135 00, 80-94 LBS

Friend's Stockyard

Accident, Md.
Report Supplied by Auction
December 22, 2003

STOCK STEERS AND BULLS 200-500 lbs 55 00-96 00
STOCK HEIFERS 200-500 lbs 51 00-88 00
SLAUGHTER STEERS Good to Choice 94 00-97 25, medium to good 70 00-93 75, heavy Choice over 1450 lbs 70 00-85 00
HOLSTEIN STEERS heavy Choice 58 00-72 00, light 42 00-64 50
SLAUGHTER HEIFERS Good to Choice 92 00-96 00, Medium to Good 70 00-90 00
BULLS, heavy 50 00-58 50, light 46 00-61 00
COWS Utility (Holsteins) 47 00-61 50, Commercial to Good 40 00-46 75, cull cows 37 00 and down
VEALS Good to Choice 50 00-90 00, Med to Good 50 00-67 00.
BOB CALVES 40 00 and down
HOLSTEIN BULL CALVES, RETURN TO FARM 90-120 lbs up to 141 00, HOLSTEIN HEIFER CALVES, RETURN TO FARM 90-120 lbs up to 360 00, BEEF X CALVES return to farm up to 120 00
HOGS top quality, up to 43 50
SOWS up to 33 50
LAMBS, Choice up to 99 00
GOATS Choice up to 77 00
BEEF HIDES UP TO 22 00
Livestock prices are all given per hundred weights



Driving Your Business Toward Financial Success One Stage At A Time



Achieve your financial goals through leasing for building, equipment and vehicle purchases. You may be able to:

- ✦ Reduce your tax bill through accelerated deductions*.
- ✦ Preserve working capital with a low advance payment.
- ✦ Customize payment schedules to match your cash flow.
- ✦ Save valuable time with our onsite service.

You drive hard for financial success. Call us today to find out how leasing may help you achieve it.

Mike Dixon Central PA, West MD 814-684-5707	Ken Darlington PA, NJ, MD 610-793-0150	Sue Beshore PA, NJ, MD 717-932-1715	Andrew McLean Delmarva 410-827-5052	Liz Anderson Delmarva 410-651-4128
Mike Fullam Central PA 570-966-9202	Brenda Pflieger Central PA 570-568-8440	Joe Polite Northwest PA 724-981-1324	Lisa Sonnen Northeast PA North NJ 570-458-0563	Doug Snee Southwest PA WV 724-627-5941

Wells Fargo Financial Leasing

800.451.3322

*Consult your tax advisor

Orchard Pump & Supply Co. - Ephrata, PA
Design - Consultation
On-site Potable/Non-Potable Pumping Systems
Variable Speed Water Systems for High Capacity Agricultural Applications
For more information, call (717) 733-6151 or toll free at 1 (800) 728-7938

NEW HAY AUCTION CECIL COUNTY AG AUCTION
Located at Gibney's Auction Center Rt 1 at the PA/MD line Rising Sun MD (Cecil County) beside Sylmar Flea Market
Selling hay straw grain firewood
Sale to be held EVERY Wednesday at 11 00 A M
Buyers and sellers welcome to this new auction!
For information contact George Gibney (auctioneer) at 410 658-5649

SAVE SAND!!
with Sand Trap™ Free Stall Bases

- Reduces sand usage up to 75%
- Maintains cow comfort
- Prevents cows digging holes
- Easy to install
- Corrosion resistant

814-276-3304
1-888-605-2422

STEIN-WAY EQUIPMENT
175 North Imler Valley Rd.
Imler, PA 16655

IDEAL LEAF TOBACCO

We will be buying the 2003 Crop of 609 Tobacco on Monday and Tuesday, January 5 & 6. Be sure to strip your tobacco in 4 grades. Also do not strip your tobacco too high in moisture. If you do not have a contract on your 2003 crop, call the numbers below.

Please Call for Appointment
Call 717-575-2525
or
717-529-6416