

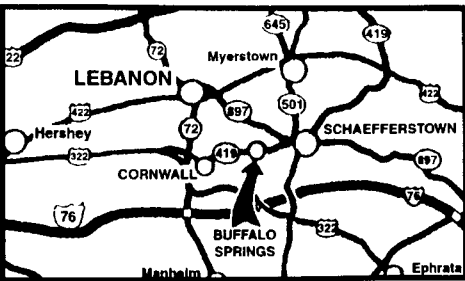
# www.kbford.com

Your Internet Connection

SPECIALIZING IN NEW & USED SUPER DUTY PICKUPS

## KELLER BROS.

(Buffalo Springs) Lebanon, PA  
 717-949-2000 or 1-800-363-2767  
 LEBANON COUNTY'S HEAVY DUTY TRUCK HQTRS.



**FAMILY OWNED AND OPERATED FOR OVER 80 YEARS**

Over 100 Clean Pre-Owned Vehicles In Stock At All Times!!

**2000 FORD EXCURSION**  
 XLT, 7.3 Turbo Diesel, Dual A/C, PW, PL, 8 Pass.  
**\$25,595**



**2002 CHEV SILVERADO**  
 V8, AT, A/C, PW, PL, CD Player, 1 Owner  
**\$22,554**



**2001 FORD F350 XL**  
 Dump Truck  
 5.4 V8, 5-Spd., AM/FM/Stereo Only 7,000 Miles. Ready to Work  
**\$25,900**



**2000 FORD F250 CREW CAB XLT**  
 Long Box, 1-Owner, AT, A/C, PW, PL, 35,200 Miles  
**\$21,995**



**2001 FORD F-350 XLT SUPER CAB DUALY**  
 7.3 Turbo Diesel, 6-Spd., A/C, PW, PL, 1-Owner, Local Trade  
**\$30,975**



**1999 FORD RANGER SUPER CAB 4x4**  
 4.0 V6, AT, A/C, XLT, PW, PL  
**\$11,995**



**1997 GMC YUKON SLT**  
 4x4, AT, A/C, PW, PL, Leather, Only \$10,995



**2002 FORD F350 XLT CREW CAB DUALY**  
 7.3 Powerstroke Diesel, 6-Spd., A/C, PW, PL, only 9,800 miles  
**\$34,975**



**2000 FORD F-150**  
 Super Cab, 4x4, Flare Sides, Local, One Owner, Very Clean, 67,000 Orig. Miles  
**\$19,875**



**1998 DODGE DURANGO**  
 V8, AT, A/C, PW, PL, 4x4  
**\$12,455**



**2001 FORD EXPEDITION EDDIE BAUER 4X4**  
 5.4 V8, AT, A/C, Leather, Moon Roof, 3<sup>rd</sup> Seat, Like New  
**\$25,750**



**1994 FORD F150 4X4**  
 Reg-Cab Flareside 5.0 Supercharged V8, 5-Spd., A/C, PW/PL, Custom Wheels, Very Sharp  
**\$8,995**



**1999 FORD RANGER REG CAB 2WD**  
 5-Spd., A/C, C, T, Cassette. 1-Owner, 35,000 Miles  
**\$6,350**



**2001 FORD F250 SUPER CAB 4x4**  
 7.3 Turbo Diesel, AT, A/C, PW, PL, 1-Owner  
**\$25,375**



**2001 FORD F150 SUPERCREW 4x4**  
 5.4 V8, AT, A/C, PW, PL, C, CD Player, 39,000 Miles  
**\$24,995**



**2001 FORD SPORT TRAC 4x4**  
 4.0L AT, A/C, PW, PL, Alloy Wheels, Sharp  
 Only \$20,773



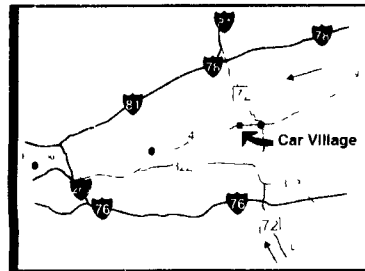
Nicest Trucks In the East • Nicest Trucks In the East • Nicest Trucks In the East • Nicest Trucks In the East • Nicest Trucks In the East • Nicest Trucks In the East

www.useddieseltruck.com

2300 W. CUMBERLAND ST. (Rt. 422)  
 LEBANON, PA 17042  
 (Across From Lebanon Valley Mall)

# CAR VILLAGE

1-800-650-1420  
 717-274-2000



**5 SP CUMMINS SHORTBED 4X4**  
 2001 DODGE 2500 QUAD CAB  
 Very Nice, Only 43,000 Miles, 24 Valve Cummins Turbo Diesel, 5 Sp., A/C Tow Pkg Alloy Wheels



**ONLY 45,000 MILES**  
 1997 DODGE 2500 QUAD CAB 4X4  
 Very Nice Tk Cummins Turbo Diesel Auto A/C Loaded Laramie SLT Pkg Tow Pkg Chrome Wheels



**5 SP CUMMINS**  
 2001 DODGE 3500 QUAD CAB DUALY 4X4  
 Very Clean Very Strong, Loaded Laramie SLT Tow Pkg, Chrome Wheels All Options



**POWERSTROKE AUTO**  
 2003 FORD F350 CREW CAB DUALY 4X4  
 They don't come any nicer only 16,000 miles, 7.3 Powerstroke Diesel Auto A/C, Loaded XLT Alloy Wheels Gorgeous Two Tone



**CHEVY 4 DOOR SHORTBED**  
 2002 CHEVY 2500 4X4  
 The Awesome Duramax Diesel & Allison Trans Loaded LT Package Capt Chairs Console Alloy Wheels



**\$15,900**  
 99 FORD F250 SUPER CAB 4 WHEEL DRIVE  
 Very Nice Clean Truck, V10, Auto A/C Sht Bed



**IT'S A HEMI!**  
 2003 DODGE 3500 4X4 DUALY  
 Only 3,000 Miles Like Brand New Hemi Powered and Sharp Enough to Do Some Serious Towing



**CREW CAB DURAMAX**  
 2001 GMC 2500 4X4  
 Very Strong Running Truck, Pulls Great Room for the Family Remaining New Tk Warranty \$28,900



**WORK STYLE**  
 2000 FORD F250 REG CAB 4x4  
 Heavy Duty 3/4 ton Powerstroke Turbo Diesel 6 Spd A/C Tow Pkg Very Clean



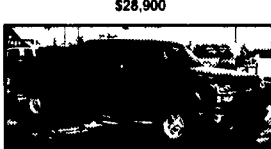
**6 0 POWERSTROKE**  
 2003 FORD F250 4 DOOR 4X4  
 Like New Only 3,000 Miles Auto Loaded XLT Capt Chairs Console Alloy Wheels This One Has It All



**6 SPD POWERSTROKE**  
 2001 FORD F250  
 Hard To Find Regular Cab Powerstroke Turbo Diesel A/C, Off Road Pkg Alloy Wheels



**5 SP CUMMINS**  
 92 DODGE 350 DUALY 2 WHEEL DRIVE  
 Runs Well Tow Pkg 5 Sp A/C



**SUPER CAB DURAMAX**  
 2003 CHEVY 2500 HD  
 Like New Dark Grey Finish, Awesome Strong Duramax Diesel Allison Auto, Tow Pkg, Remain New Tk Warranty



**4x4 CREW CAB DUALY**  
 6 SPD POWERSTROKE  
 99 FORD F350  
 Loaded XLT Lariat A/C, All Power Equipment, Aluminum Wheels



**99 DODGE QUAD CAB DUALY**  
 4 Wheel Drive, Cummins Turbo Diesel Auto A/C Tow Pkg Very Nice Clean Truck  
 Only \$23,900



**6SP HIGH OUTPUT**  
 2002 DODGE 2500 QUAD CAB 4X4  
 Very Nice, Only 30,000 Miles 24 Valve Cummins Turbo Diesel, 6 Sp., A/C Tow Pkg, Runs strong



**35 000 ORIGINAL MILES**  
 1997 GMC 3500 CREW CAB DUALY 4X4  
 The Nicest One Anywhere A Must See Paint Bed Interior Like New, 350 Vortec V8, 5 Sp A/C, and More!



**CUMMINS SHORTBED**  
 2001 DODGE 2500 QUAD CAB 4X4  
 Real Nice 2 Tone Black & Silver 24 Valve Cummins Turbo Diesel Auto A/C, Loaded, All Options



**\$19,900**  
 1996 FORD F350 CREW CAB 4X4  
 Runs Great Powerstroke Turbo Diesel 5 Sp A/C Loaded XLT Tow Pkg



**6 SP POWERSTROKE**  
 2000 FORD F350 SUPER CAB DUALY 4X4  
 Powerstroke Turbo Diesel, 6 SP A/C Loaded XLT Aluminum wheels Only 49,000 Miles

## FLATBEDS, WORK & DUMP TRUCKS



**550 DUMP**  
 2002 FORD 4X4 SUPER DUTY  
 A Rare Find, Only 15,800 Miles, 7.3 Powerstroke Turbo Diesel 6 Sp A/C Heavy 17,500 GVW 3 Yard Dump



**EBY BODY**  
 2001 FORD F350 CREW CAB 4X4  
 V10 Gas, Auto A/C, 8 1/2 Aluminum Body Swing Open Rear Gates, Tool Boxes



**550 MECHANICS BODY**  
 99 FORD  
 A Rare One, Heavy 17,500 GVW Powerstroke Turbo Diesel, Auto A/C Vinyl Seats & Floor, Tow Pkg, Only 63,000 Miles, Very Clean



**GREAT FARM TRUCK**  
 2000 FORD F350  
 With Aluminum Flat Dump, Single Rear Wheel, V8, AT, A/C \$16,900



**NO C D L**  
 2000 FORD 650 SUPER CAB DUMP  
 No CDL License Required, 26,000 GVW Only 22,000 Miles, Cat Diesel Allison Auto, A/C Hell Dump Body



**4x4 SUPER CAB FLATBED**  
 99 DODGE 3500  
 A Rare Find, Cummins Turbo Diesel Auto A/C 12 ft Bed Tow Pkg



**TRACTOR CAR HAULER**  
 2001 CHEVY 3500 SUPER CAB  
 Only 13,000 Miles '8100 Vortec 6 Sp Manual Trans Ramps Electric Winch



**4x4 DUMP**  
 2000 FORD F350  
 Powerstroke Turbo Diesel Auto A/C Only 39,000 Miles 48 Sides Tow Pkg



**4X4 FLATBED**  
 2000 FORD F350  
 Extended Cab 4x4 Only 32,000 Miles Powerstroke Turbo Diesel AT A/C, 9 1/2 Ft Bed, Removable Sides



**550 4 DOOR L-PAK DUMP TRUCK**  
 2003 FORD  
 A Rare One For Sure Only 10,000 Miles AT A/C Heavy 17,500 GVW



**CARGO WORK VAN**  
 2000 GMC 2500  
 Ladder Rack Part Bins V8 Auto A/C Only 48,000 Miles Service Inspected Ready To Go \$14,900



**4X4 DURAMAX**  
 2001 CHEVY 3500  
 Ready To Work Duramax Diesel AT A/C Snow Plow Prop Only 27,000 Miles

Nicest Trucks In the East • Nicest Trucks In the East • Nicest Trucks In the East • Nicest Trucks In the East • Nicest Trucks In the East • Nicest Trucks In the East