

www.useddieseltruck.com

**CHECK IT OUT**

**1993 RD Mack**, 350 hp, 4 valve, Jake brake, 8LL trans, double frame, 14,300 lb front, 44,000 lb rear, Henrickson sus, air ride cab, wetline, 216" WB, 134" CA, VG cond  
**\$22,500 obo (717)548-3006**

7511 Allentown Blvd.  
 Harrisburg, PA 17112

**AFFORDABLE  
 CARS AND TRUCKS, INC.**

**717-652-1925**  
 FAX 717-652-4888  
 Hours: Mon & Tues 9-9  
 Wed thru Sat 9-6

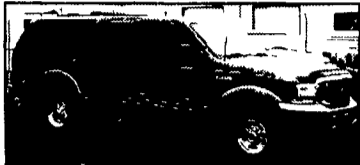
**75 TRUCKS  
 IN STOCK**

**"You Gotta Believe!!"**

New Exit #72A, Rt. 81 N; Rt. 22 East of Harrisburg; 3 Miles North of Hershey Park

**01 FORD EXCURSION LIMITED 4x4**

7.3 Powerstroke  
 Leather 3rd Seat  
 Dual AC & Heat  
 Loaded &  
 Flawless 112K  
**\$22,995**



**97 DODGE RAM 3500 4x4 LARAMIE  
 SLT EXT CAB**

Longbox Dually Cummins Turbo  
 Diesel with Banks & Big  
 Exhaust 300 HP 5 Spd New  
 Clutch All Black Fully Loaded  
 Extra Nice All Around! 130k  
**\$17,995**



**87 CHEVY C-20  
 SILVERADO 4x4**  
 350 V8, AT, AC, 8600 GVW, No  
 Rust, Fantastic Truck, 81K!  
**\$6,995**



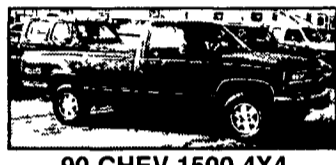
**94 FORD F250 XLT 4x4 H.D.**  
 Ext Longbox, 351 V8, 5.8 Gas AT,  
 AC, PW PDL Tilt, New Tires & Insp  
 Only 108K Flawless!  
**\$9,995**



**97 DODGE RAM 1500 4x4  
 EXT. SHORT BOX**  
 SLT Sport, V8, AT, AC, PW, PDL,  
 Tilt & More Very Sharp! Only 90K  
**\$9,995**



**96 FORD F350 XLT 4x4**  
 1-Ton 7.3 Powerstroke, AT, AC, PW  
 PDL Tilt Only 110K Very Clean Truck  
**\$14,995**



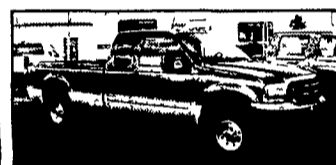
**90 CHEV 1500 4X4  
 SILVERADO PU**  
 350 V8, AT AC PW Longbox,  
 New PA Insp, Very Clean Truck,  
 1-Owner 150K, No Rust!  
**\$4,500**



**95 DODGE RAM 2500 4x4  
 EXT. LONG BOX SLT**  
 Laramie, Cummins Turbo Dsl, AT, AC  
 PW, PDL, Only 61,000 Miles, Absolutely  
 Showroom Condition In & Out!  
**\$17,995**



**98 DODGE RAM 2500 4X4  
 SLT LARAMIE**  
 Cummins Turbo Disc 5 SP Only 60 000  
 Miles With All the Equipment Want a  
 New Truck For 1/2 the Price!  
**\$19,995**



**00 FORD F250 XLT 4x4  
 SUPER DUTY QUAD DOOR,**  
 Long Box 7.3 Powerstroke AT, AC, PW  
 PDL, Tilt, Cruise Extra Clean & Sharp 140K  
**\$19,995**



**87 CHEVY 1500  
 SILVERADO 4X4**  
 V8 AT, AC, PW, PDL,  
 Nice Clean Truck, 130K  
**Only \$3,495**



**97 FORD F250 XLT 4x4**  
 5.8 V8 Gas AT AC PW PDL Tilt  
 Like New! 1 Owner 120K  
**\$9,995**



**99 FORD F350 XL 4x4  
 SUPER DUTY CREW CAB**  
 Longbox 7.3 Powerstroke 6 Spd AC  
 Brand New 10 Ply Radials & PA Insp! 190K  
 But All Highway Driven & Very Clean!  
**\$16,995**



**99 DODGE RAM 2500  
 4X4 SLT**  
 Laramie Shortbox, Cummins Turbo  
 Dsl, 5 sp, AC, Power Everything & Just  
 Like New! 150K Looks Like 50K  
**\$18,995**



**00 FORD F350 XLT 4x4  
 SUPER DUTY**  
 1 Ton Quad Dually, 7.3 Powerstroke  
 Dsl, 6 Spd, AC, PW, PDL, Tilt &  
 More This is one nice truck, looks  
 & runs out like new! 160K  
**\$19,995**



**01 FORD F250 XLT 4x4  
 SUPER DUTY**  
 Off Road, Quad Door, Ext Longbox,  
 7.3 Powerstroke 6 Spd, AC, PW,  
 PDL & More 102K, but looks like 40K  
**\$22,995**



**92 DODGE RAM 3500 SLT  
 4x4 LARAMIE**  
 1-Ton Dually, Ext Longbox, Cummins Turbo Dsl,  
 5 Spd, AC, PW, PDL, Tilt & More! Rare Truck &  
 Very, Very Clean! All Highway Miles - 200K  
**\$10,995**



**99 FORD F350 XLT 4X4  
 CREW CAB SUPERDUTY**  
 7.3 Powerstroke Dsl, AT, AC, PW,  
 PDL, Tilt & More This is Perfect!  
 120K, Bright Red!  
**\$20,995**



**99 FORD F350 XLT 4x4  
 SUPER DUTY**  
 Dually Crew Cab, Longbox, 7.3  
 Powerstroke Dsl, 6-Spd, AC, PW,  
 PDL, Tilt, Cruise & So Much More!  
 140K, Absolutely Perfect Shape!  
**\$21,995**



**96 FORD F350 XL 4x4**  
 1-Ton, 9000 GVW, H.D., 7.3 Powerstroke  
 dsl, 5-speed, AC, cloth seat, Real Clean  
 Truck, No Disappointments All blue, 140K  
**\$12,995**



**96 CHEV SCOTTSDALE  
 2500 4x4,**  
 Heavy Duty 8600 GVW 8 Lug AT  
 AC Vortec 350 Very Clean Truck  
 Would Make Great Plow Truck!  
 108K  
**\$8,995**



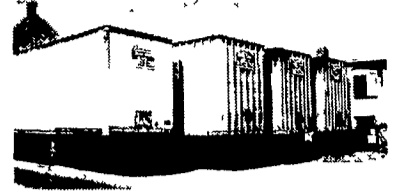
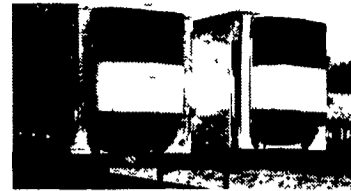
**91 FORD F250 XLT H.D. 4x4**  
 Ext Longbox, 7.3 Diesel AT AC,  
 PW PDL Tilt Cruise & Much More!  
 Real Clean Old Truck 100 000 Mi  
**\$7,995**



**97 FORD F250 XLT 4X4**  
 Ext Longbox, 7.3 Powerstroke Dsl,  
 5-Speed, AC, PW, PDL, Tilt, Cruise,  
 Beautiful 2 Tone Green Paint Truck  
 Is Sharp, 150K  
**\$12,995**

Dist. Price. Mileage listed for your convenience only. It is approximate. Not to be relied on as exact. Sorry for any inconvenience.

**350 TRUCKS / TRAILERS**



Storage trailers and excess equipment for sale or rent with PA titles, some have current inspections, good floors, dry and secure possible delivery available.

- 1 - 1992 Great Dane Super Seal Reefer 48 x 102 White Stainless Front and Rear Doors, Spring Slider Vents, Very Good HD Floor, LP 24.5 Alum Outside, Carrier Phoenix Good Condition **\$8500.00**
- 1 - 1995 Utility Reefer, 48 x 102' White Stainless Front and Rear Doors, Air Ride Slider Vent, Very Good HD Floor LP 24.5 Alum Outside Carrier Phoenix, Good Condition. **\$12,000.00**
- 6 - Strick Van Trailers 48'x96' Rib side, PA State inspected, Dry Good Floors and New Rear Doors 24.5 Spoke Radials Starting At **\$1400.00**
- 1 - Great Dane Trailer 32' Reefer Box, No Unit, Tandem Axle Side Door Roll Up Rear Door. **\$500.00**
- Moto Truc Reach Lift Electric MO# X-TFND-R Stand On type 3000 # **\$250 OBO**
- 20 - Steel Disk Wheels 24.5 stud pilot, some reconditioned. **\$15.00 each**
- 4 - Aluminum 24.5 Hub Pilot, uni-mount. **\$140/each.**
- 4 - Aluminum 24.5 Stud Pilot Rims. **\$125.00 each**
- 4 - Aluminum Alcoa LTS Chevrolet/GMC, 8 Lug 3/4 - 1 Ton Truck Rims **\$400.00.**
- Lincoln Arc Welder AC 225 amp **\$100.00 OBO**
- Snap On Automotive Electronic Tire Balancer **\$150.00 OBO.**

1999 Chevrolet Tahoe LT, White, Loaded all Options, Gray Leather, 106K Miles, Excellent Condition, Transferable Extended Warranty **\$12,900**

Please call Steve Mon. - Fri. 8 AM - 5 PM  
**800/752-1902 or 717/362-8117**  
 or 717/362-3678 nights and weekends



**2001 Peterbilt 357 Daycab**, heavy specs cab & chassis, N14 Cummins w/Jake, (350 hp), RTO 14900MLL Trans., 20,000 front, 46,000lb rears on air track with full lockers, 5.29 ratio, Double frame, 236" WB, 163" CA, 252" cab to end of frame. Dual stacks & breathers, 19,000 mi.



**2001 Mitsubishi FM-SP**, w/26' Grumman Reefer Body & Thermo King KD II SR, Elec. Stand-by, Stainless Rear Frame, Roll Up Door and Curbside Door, 7.5 Turbo Dsl. (230 HP), 6 Spd., 32,900 GVWR, Air Brakes, 45,000 Miles.

**30/40 Four Way  
 Auto Sales**

Rt. 23, New Holland, PA  
**717-354-3199**  
 Toll Free 1-877-999-8267