

**350 TRUCKS / TRAILERS**

1994 Chevrolet Silverado K3500, 4x4, 4dr crew cab pickup, 8' bed, AT, AC, Cruise & Tilt, PW, PDL, PM, Cass, \$11,000 (717)485-5128

91 Ford F250, 4x4, Ex Cab, Dsl, XLT Lariat, 5 spd, Cruise & Tilt, PW, PDL, AM/FM Cass \$5,000 (717)485-5128

Int'l dump truck, 30,000 GVW, pintle hitch, w/air to rear, snow plow & rebilt trans, \$3,900 (717)867-4091

1980 Chevy 1-ton dump, 4x4, w/snow plow, rebilt trans, \$2,900 (717)867-4091

1995 Chevy Suburban 2500, 4x4, A/OD, V8, barn doors, 130,000 mi, \$4,800 (717)867-4091

'69 IH dump truck restored \$3500 '70 IH dump truck \$2500 12 ton trailer \$2500, 908-454-6089

1987 Ford L9000, 350 Cummins, 8 spd, LL, 46 lb rears, double-frame wetline, was dumptruck now tractor can be converted back easily, \$10,000 OBO (410)879-7641

1999 FL70, Freightliner/Renegade Toter home w/45' Renegade Trailer Onan, 550 generator on ea unit. 717-485-0320 or 888-799-0504

1977 International Single Axle Dump, 25 GVW, 60K, \$2800 OBO 1987 F350 Dump, 460 5 spd, LPack Tool Boxes, \$3000 OBO (201)602-8021

FOR Sale (6) 8R 19 5XZA Michelin Tires 9/32 tread \$150 00 Adams Co (717)334-5511

'00 Dodge 3500, 15 pass, 360 auto, PS, PB, PW, PDL, cruise, tilt, dual air, 53,000 miles, new Michelins, dark green, \$12,900 717-733-2873

'01 Dodge 2500, 12 pass, 318 auto, PS, PB, PW, PDL, cruise, tilt, dual air, 57,000 miles, new radials, \$12,500 717-733-2873

'02 Chevy Silverado LS 2500, HD, 2WD, 4 door, extended cab, 60 auto, PS, PB, PW, PDL, cruise, tilt, air, CD, 9,200 GVW, 82,000 one owner miles, new radials, excellent condition, \$15,900 717-733-2873

Chevy C65, 16' Dump 76, exc. shape, 2 sides (410)836-7023

'77 Chevy 24 ft, rollback and dump 240HP Detroit, good condition \$7900 (717)626-1394

**\$9,500 Each**



2 - 1995 International Model 4900 22' chassis and cabs DT 466 eng (210 hp) 6 spd trans P/S A/C 32 700 lb GVW double frame full air brakes High tread 11R22.5 tires on Budd wheels These are very sharp excellent running trucks  
**Camden Truck 215-925-0322 856-456-4030**

**USED TRUCKS**



**2000 DODGE 3500 LARAMIE SLT 4x4 Quad Cab,** Cummins Turbo Diesel, AT, A/C, Most Options, 93K Miles, Blue  
**\$23,500**



**2000 FORD F250 CREW CAB 4X4, XLT, AT, Power Stroke Diesel, A/C, Most Options, Leather, 108K Miles, Black**  
**\$22,900**

**2003 CHEVY 2500 H.D. SILVERADO QUAD CAB 4X4 DURAMAX,** Turbo Diesel, Short Bed, Allison AT, A/C, Most Options, On Star Locator System, Heated Seats, Platinum Color, 28K Miles **\$32,900**

**2001 DODGE 2500 QUAD CAB SLT 4X4,** Cummins Turbo Diesel, AT, A/C, Most Options, Red, 84K Miles **\$23,600**

**1999 DODGE RAM 2500 QUAD CAB SPORT,** Short Bed, 4x4, Cummins Turbo Diesel, AT, A/C, Most Options, 94K Miles, Dk Green **\$18,900**

**1998 DODGE RAM 2500 4x4, Club Cab,** 12 Valve Diesel, AT, A/C, C, 93K Miles, Red **\$17,900**

**1997 DODGE RAM 2500 CLUB CAB, 4x4, V-10** Laramie SLT, Leather, AT, A/C, Most Options, Black, 108K Miles **\$12,900**

**1995 CHEV 3500 8 FT. DUMP,** 350 V8, 2WD, 5-Speed, PS, PB, AM/FM, 96K Miles, Red **\$8,900**

**1988 FORD F350 w/8 1/2 ft Mason Dump body,** 460 V8, 5-Spd, PS, PB, A/C, Red, 74K Miles **\$10,900**

**USED VANS**

**1997 Ford E350 Maxi Van,** 15-pass, 5 4 V8, AT, Dual A/C, PB, PS, PL, AM/FM/Cass/CD, TC, 42K miles, Black **\$11,500**

**1997 CHRYSLER TOWN & COUNTRY MINI-VAN,** 3 8 6-Cyl, 4x4, AT, Dual A/C, Most Options, 130K Miles, Green **\$6,900**

**1998 CHRYSLER TOWN & COUNTRY MINI VAN,** 3 8 6 cyl, AT, Dual A/C, Most Options, 74K Miles, Black **\$8,500**

**SCHAEFFERSTOWN AUTO & TRUCK SALES**

RT. 501, 1-1/2 miles South of Schaefferstown 717-949-2812

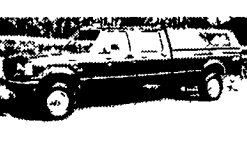
**Meadowbrook Auto Sales**  
875 Abbottstown Pike, Hanover, PA  
717-632-9600 717-633-5789



**1994 Dodge Ram 2500 Laramie SLT** Burg Cummins Diesel AT PS PB Air Cond Cruise Control Tilt Wheel PW PDL 142k  
**Only \$8,900**



**1999 Chevrolet G30 Cubevan,** 6.5 Turbo Diesel AT PS PB Air Cond, 14 ft Aluminum Box Dual Rear Wheels 116,000 Miles, Super Nice Condition  
**Only \$11,900**



**1996 Ford F-350 Crew Cab XLT 4x4,** 7.3 Powerstroke Diesel, A T, PS, PB, Air Cond Cruise Control, Tilt Wheel PW PDL You Gotta See This Truck To Believe How Nice w/179 000 Miles  
**Only \$17,900**



**1999 Dodge Ram 3500 Ext Cab 4x4 Dually,** White, Cummins Diesel AT PS PB Air Cond Cruise Control Tilt Wheel PW PDL 82 000 Miles Super Nice Condition  
**Only \$21,900**



**1998 Chevrolet 12 Ft. Dump Stakebody,** White, 350 V-8, Automatic, PS, PB, Air Cond, Tilt Wheel Cruise Control Dual Rear Wheels, 25,000 Miles  
**Only \$17,900**



**1997 Ford F-350 Crew Cab XLT 4x4,** 7.3 Powerstroke Diesel A T PS PB Air Cond PW PDL Tilt Wheel Cruise Control 145 000 Miles  
**Only \$17,900**



**1999 Dodge Ram 1500 Ext Cab Laramie SLT,** Red, 5.2 V-8 Automatic Air Cond, PS PB, A/C, PW PDL Tilt Wheel, Cruise Control 80 000 Miles,  
**Only \$15,900**



**1999 Ford F-250 Ext Cab XLT 4x4,** Tan 7.3 Powerstroke Diesel A T, PS, PB, Air Cond, Tilt Wheel, Cruise Control PW PDL, Super Nice Condition 134,000 Miles  
**Only \$19,900**



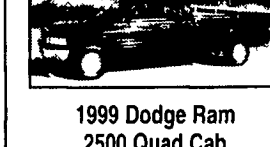
**1987 GMC 12 Ft Stepvan,** White 350 V 8 AT PS PB Dual Rear Wheels, New Inspection, 150 000 Miles Nice Condition  
**Only \$3,900**



**1996 Ford E-350 Cubevan,** 14 Ft Fiberglass Box 351 V-8 Automatic PS, PB Air Cond Dual Rear Wheels 72 000 Miles  
**Only \$9,900**



**1994 Ford F-250 Ext. Cab** Tan 7.3 Turbo Diesel Automatic PS PB Air Cond Cruise Control Tilt Wheel PW PDL 126 000 Miles  
**Only \$9,900**



**1999 Dodge Ram 2500 Quad Cab** Black V 10 Automatic Air Cond PS PB Cruise Control Tilt Wheel Well Maintained 130 000 Miles  
**Only \$9,900**



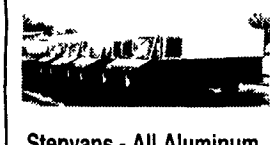
**1995 Dodge Ram 2500 4x4** Red Cummins Diesel A T, PS PB Air Cond, Cruise Control 160K  
**Only \$10,900**



**1999 Ford F-350 Ext. Cab 4x4 Dually** White 7.3 Powerstroke Diesel A T PS PB Air Cond Tilt Wheel Cruise Control PW PDL Cloth Interior Super Clean 161K  
**Only \$18,900**



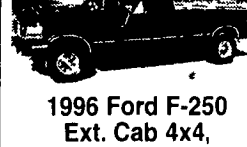
**1986 Ford F-250 Ext Cab,** Red/White 6.9 Diesel A T PS PB Air Cond Tilt Wheel Cruise Control PW PDL 179K  
**Only \$3,900**



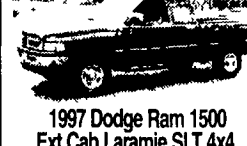
**Stepvans - All Aluminum,** 10 ft to 16 ft Single Rear and Dual Rear Wheels Aluminum & Manual Trans, 4 Cyl & 8 Cylinder Diesels 1 350 Gas Service Records for Most Many to Choose from  
**Starting at \$3,000.00**



**2000 Ford E-350 Cubevan** 14 Ft 5.4 V8 Automatic PS PB Air Cond Dual Rear Wheels **POWER LIFT GATE,** 115 000 Miles  
**Only \$11,900**



**1996 Ford F-250 Ext. Cab 4x4,** Blue 7.3 Powerstroke Diesel 5 Spd PS PB A/C PW PDL Tilt Wheel Cruise Control 138 000 Miles Super Nice condition  
**Only \$15,900**



**1997 Dodge Ram 1500 Ext Cab Laramie SLT 4x4,** Black 318 V8 AT PS PB Air Cond PW PDL Tilt Wheel Cruise Control 114 000 Miles  
**Only \$10,900**



**1995 Dodge Ram 3500 Laramie SLT 4x4,** Cummins Diesel AT PS PB Air Cond PW PDL Tilt Wheel Cruise Control 114,000 Miles  
**Only \$12,900**

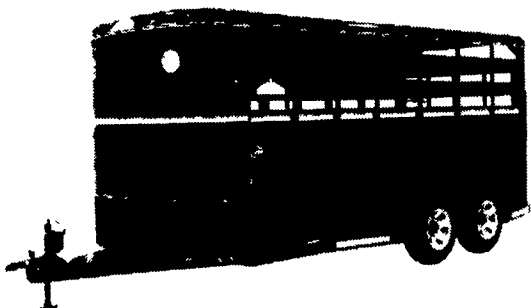


**1995 Dodge Ram 3500 Laramie SLT Ext Cab 4x4,** Cummins Diesel AT PS PB Air Cond PW PDL Tilt Wheel Cruise Control 151 000 Miles  
**Only \$14,900**



**1997 Dodge Ram 1500 4x4,** Black 318 V-8 AT PS PB Air Cond Nice Condition  
**Only \$7,900**

**HOSTETLER Truck Bodies & Trailers**  
717-667-3921  
Milroy Exit off Rt 322 Between Lewistown & State College

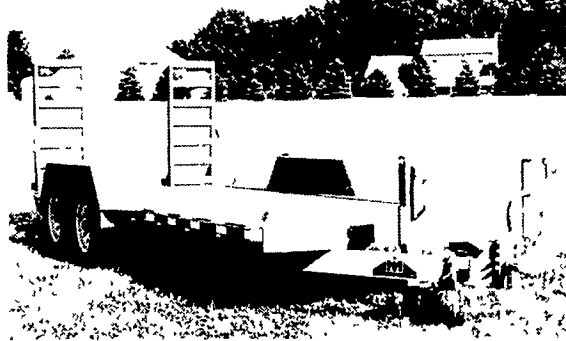


**New Steel Livestock Trailers**

- Corn Pro 2 Horses Slant Load, Bumper Pull, Dressing Room
- Corn Pro 16' Bumper Pull Livestock, Torston Axles
- Corn Pro 16' Livestock Bumper Pull, 7' High, Torston Axles
- Moritz 16' Bumper Pull Livestock, Torston Axles

**New Aluminum Livestock Trailers**

- Eby LS 16' Bumper Pull, Torston Axles, 10,000# GVW
- Eby LS 16' Bumper Pull, 7' High, Torston Axles, 10,000# GVW
- Eby LS 16' Gooseneck, Torston Axles, 10,000# GVW

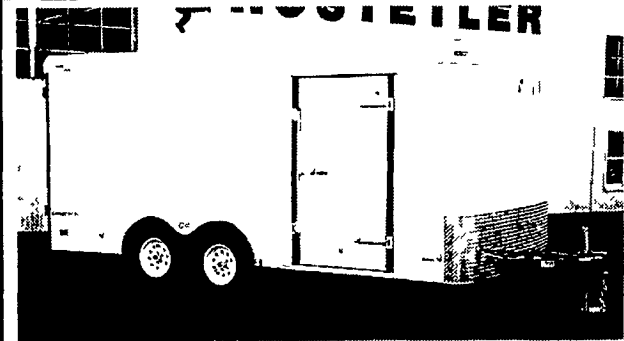


**Skid Loader Trailers Now Available in Kubota Orange**

- 16' Loader, 9950# GVW Torston Axles, Ramps, 82" Wide
- 18' Loader, 9950# GVW, Torston Axles, Ramps 82" Wide
- 18" Loader, 9950# GVW, Ramp Gate, Torston Axles
- 19' Tilt, 9950# GVW, Hydraulic Tilt 82" Wide

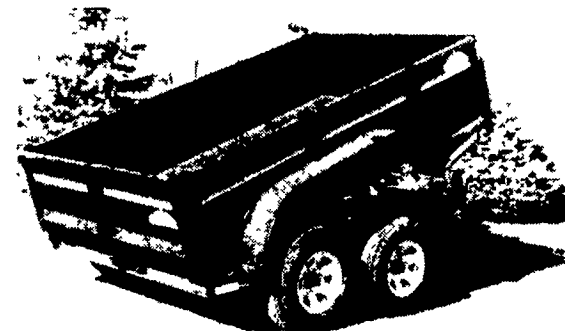
**New & Used Equipment Trailers**

- New Moritz 25' Gooseneck Flatbed Trailer, Adj Dovetail
- New Moritz 18'+4' Gooseneck Flatbed Trailer, 10,000# GVW
- Used Hudson 6 Ton Low Boy Trailer, 2003 Model
- Used Cronkite 6 Ton Lowboy Trailer, Solid



**Enclosed Cargo Trailers**

- Pace American Single Axle, 5 x 8, 5 x 10, 6' 10", 6 x 12'
- Pace American Tandem Axle 7 x 14, 7 x 16, 8 x 16, 8 x 20'



**Dump Trailers**

- Moritz 5'x8' Single Axle, 5000# GVW, Torston Axle
- Moritz 6'x10' Deckover, 7000# GVW, Torston Axles
- Moritz 6'x10' Low Profile, Ramps, 10,000# GVW
- Moritz 6'8"x12' Low Profile, 12000# GVW
- Moritz 8'x14' Gooseneck, Grain Dump, 14000# GVW