

2 Male AKC Pembroke Welsh Corgi Pups, ready to go, 1/10/04, \$450
Wanted AKC Breeder, Male & Female Leave Message (570)726-3745
German Shepherd Puppies, AKC, Black/Tan, All Shots, Vet Checked, Ready for Christmas Eve Deliv \$350 (717)677 8920

320 MISCELLANEOUS FOR SALE

**For Sale
Used Deli Equipment**

- 8' Self Contained Delh Case
- 6' Self Contained Delh Case
- 3-Door Glass Freezer
- 3-Door Glass Refrigerator
- 4 Open Produce Case
- 6-Burner Vulcan Gas Range Single Oven
- Hobart 60 Quart Mixer
- Butcher Block Work Table
- 20 Quart Mixer
- 5' Therm Control Vulcan Gas Grill

We Install Stainless Exhaust Hoods at Reasonable Prices, N S F Approved
Call For Free Estimates

717-933-5419 from 9 00 A M until 5 00 P M

Mon through Fri

Seigfried's Restaurant Equip.

4 Mill Rd
Myerstown, PA 17067
717-933-5419

WANTED Puppies
Best Prices for Purebred & Mixed Pups
Cash Paid
508/801-3722

WANTED PUPPIES
Pure & Mixed Litter lots for resale for companion pets
JACK'S DOG FARM
215-766-8802
OR
215-766-8840
leave message
Tues.-Sat. 9 am - 5 pm

Dog Food Sale Poultry Base
Protein Fat Reg Sale
22% 16% - 13.00 \$11.50
24% 20% - 15.00 \$13.00
Poultry-Meat-Fish
Blowout Special 4-Tons of Feed 50# Bags for \$6.50 Must Take All 570-799-0192

270 PETS

Reg. Boarder Collie pups Great markings, born Oct 25 3 males, 1 female Leave message (610)367-4839 Montg
For Sale Golden Ret Pups, Exc Bloodlines Females \$400 Males \$300 (717)733-6977

300 COMPUTERS

Ag Computer hardware, software & GPS products call 1-800-270-0047, see our website www.nsia.us

320 MISCELLANEOUS FOR SALE

Quality Wood Working Equipment
Must move immediately from building
2) 24' Lannewitz band saws \$2,500/ea
1) SCMI 36" band saw \$3,500
1) Sicotte 5 spindle auto vertical drill \$2,500
1) Torwegge multi saw \$3,500
36" DeWalt radial arm saw \$850
Misc chop saws, dust collectors, saw blades
(814) 634-0325

MISC:
• Various Stainless Steel Tanks Under 3000 Gal Call for Price
• 3/16 x 20 Pyramid Bending rolls \$3,500
• 6000 Gal Stainless Steel Vertical \$3,200
• White Cedar Fence Posts, prices per skid
2 \$2.75 3 \$3.25 4 \$4.50 5 \$6
call for price
• New & Used Gear Boxes various ratios 25c/gal
• 20 000 to 48 000 gal Epoxy lined Tanks \$750
• 12 Air Locks \$1,500
• Roller Walk behind Hatz Diesel Vibrator
• Concrete Saw 16" Diamond blade gas powered w/water attachment \$1,600
• 4 Ton Machinery Rollers \$55 ea
• 24 Qt Dough Mixer \$1,250

WOODWORKING MACHINERY:
• Vollmer Band Saw Blade Grinder model III - senior \$750
FORKLIFTS:
Good selections of used forklifts from 3,000 8,000 lbs
• 6000# Yale Pneumatic Tire (Dual) 2-Speed Auto Triple Stage, 1980 \$6,900
• 5000# Clark, Cushion Tire Triple Stage, Side Shift 1990 \$5,200
• 8000# CAT, Cushion Tire std mast manual transmission \$3,900
• 8000# Hyster, Cushion Tire std mast manual transmission \$2,800
• Genie Scissor Lift 26 ft work height 1999 mdl like new \$5,500
• 5000# Nissan pneu tires std mast, automatic Diesel \$5,500
• 3000# Clark Triple Stage Side Shift Cushion Tire \$3,100

METAL:
• Shears Cincinnati 1/2 x10 w/power back gauge \$16,500
• Jig Bore Fosdick Sn 2222124 digital readout NICK \$1,500
CE-DAR LOG HOMES:
Build yourself Call for log prices
Phone: 717/354-3105, Fax: 717/354-4887

2 CP 300 Miller Welders \$800/ea; 1451 Miller Welder \$500; 10sp Turret Punch Press w/tooling \$3,500, 90 ton Punch Press \$6,000, 75 ton Hyd Press Brake \$21,000 (717)949-2539 lve mssg
Hauling with 22 ft roll-back truck Call Glenn Martin (717)575-6370
Waste Oil Heater, Shenandoah complete w/everything tanks, etc Burns used car oil, \$1800 (717)629-0887
170 gal Plastic Tank, Totes, washed, plastic drums 717-397-7695

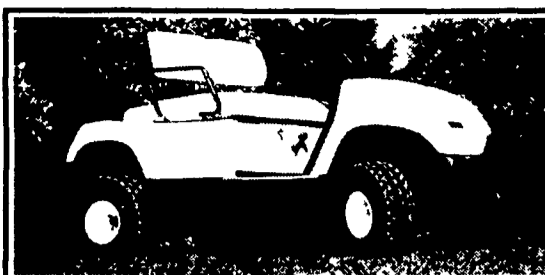
SAFES -- double door, 69x42x32, \$650, single door 60x24x29, \$650; single door 30x23x23, \$350 All UL fire rated & on wheels 717-761-1428
Brand new 3' acrylic bisque shower, fully enclosed, \$300 Kodiak solid front wood stove, \$250 (717)872-4853
Shears brakes, press brake tooling, punch presses, rolls, iron workers, hand brakes, lathes, milling machines, welders tin smith tools, tool cabinets air compressors, fork lifts, pallet jacks (717)733-7488 NO Sunday Calls Please

RESTAURANT EQUIPMENT Located in Middletown in Dauphin Co Call Wayne (717)329 4234
Bell sawmill, hyd, extra long track, 52" carbide blade, \$1995 (717)244 9391 mornings

Turkey Calls, Amish made, (610)381-4004
Strapping Machine, Semi Automatic, never used (410)836-7023
Cleaver Brooks boiler, 340,000 BTU, 3 dock plates, best offer (610)562-1402

325 ANTIQUES/ COLLECTIBLES
2 Antique Sleighs One is a Cutter & One is a Work Sleigh, both restored Cutter is upholstered (717)244-2902 York Co

330 RECREATIONAL VEHICLES
1995 Yamaha Snowmobile Vmax600 w/ elect start & reverse, VGC 1987 Yamaha SRV snowmobile, VGC 1993 Caravan & closed trailer, VGC (717) 464-2912
1999 34V Motor Home, Ford V10, 12K miles, slideout, 7K watt gen \$65,000 (814)542-8803
92 Artic Cat Pantera 2 man sport sled, forward & reverse, elec start, hand warmers, exc cond 2800 mi, \$1,750 (302)656-3444



GOLF CARTS

Comfortably seats several people, Easy stop & go, Low maintenance
IDEAL FOR: Farms, ranches, yard or garden work, sporting events, hunting
OPTIONS: Utility boxes, lift kit, sport tires & wheels



BURKHOLDER LANDSCAPING
Ephrata, PA
717-335-0449 717-278-2449

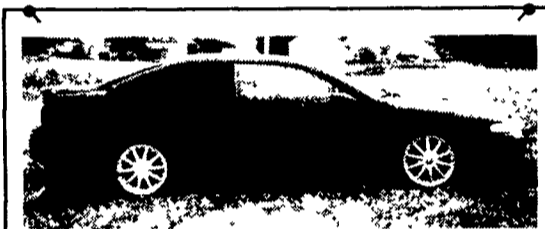
340 CARS FOR SALE

'86 VW Jetta, runs, inspected, \$500 obo 610-495-6166

'97 Saturn SL1, 4 dr, 4 cyl, 5 spd, PS, PB, PW, PDL, cruise, tilt, air, Am-Fm cass, new radials, dark green, 93,000 miles, excellent condition, \$2,975 717-733-2873

'99 Chevy Monte Carlo LS, 3100 V6, auto, PS, PB, PW, PDL, cruise, tilt, air, Am/Fm/Cass/CD, 29,000 miles, black, \$7,900 717-733-2873

2000 Ford E350, 15 passenger maxi van, 5.4 V-8, 29,000 mi. rear heat and air, w/tint windows, \$9700 (920)604-0208 717-733-2873



1997 Chrysler Sebring LXi 42k miles, Black-Grey Leather, Loaded, V6 AM-FM, CD, Cass., garage kept, 1-owner, 717-738-3559 asking \$9,000

WANTED CASH WAITING

Check your barns and garages Looking for antiques, classics & muscle cars and parts Nothing newer than 74 Also automobile memorabilia and gas station related items Foreign or domestic Chrysler products 70-74 NO 4-DOORS, NO DEALERS
Contact Steve **215-237-2898**
coololdcars@comcast.net

350 TRUCKS/ TRAILERS



1977 R686ST
300-5 speed (needs clutch & pressure switch)
\$3,500.00 Contact 1-888-422-5243



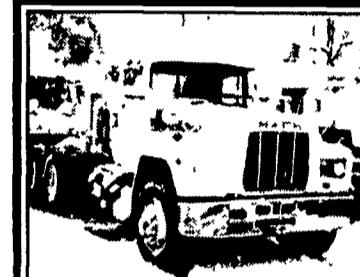
1994 International 4900 Refer
DT 466 @ 210 HP, 5 spd, Air brakes, 32,700 GVW 24' Morgan Refrigerated body, Thermo King KDII unit w/elec stdby, Roll-up Door, Truck & Body very clean & Straight, A must see, Truck has been family owned & operated
\$14,500
Call 570/585-1707



New Open Car Trailer \$1,499
7 000 lbs GVW elect brakes with ramps that slide out from under diamond plate steel runways
4x8 Utility Trailer \$399 • Car Dolly \$699
302/368-9534
Newark, Delaware

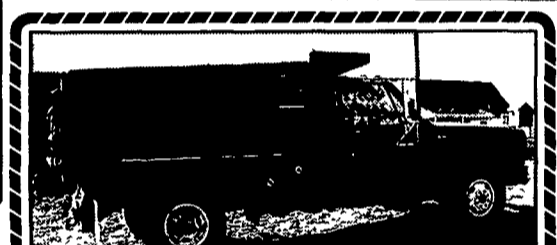


Ford F350 Stake Body, 125K mi., 4 spd. w/overdrive • \$3,800
717-369-4115



1989 Mack P Model Tandem Axle Tractor. 300 4Valve Mack Engine, 5 Sp. Mack Trans. P/S, A/C, Camel Back Suspension, Alum Budd Wheels on Front, Steel on Rear. Excellent Work Truck \$6,200

Camden Truck
215-925-0322
856-456-4030

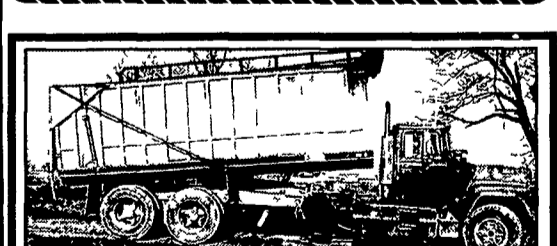


1978 Chevy, Custom deluxe 30, dump truck, 112,000 mi., works good, \$3,600.
717-369-4115



2 1995 Ford Aero Max LA9000 Single Axle Tractors L10 Cummins Engines (280 hp), 9 Sp Trans, A/C, P/S, 11R22 5 Tires on Budd Wheels 84" CA (will take 10' dump body), 33,200 lb GVW Very Nice Trucks \$6,900 Each

Camden Truck
215-925-0322
856-456-4030



1987 R Mack 20' Silage Bed w/Electric Tarp 5 spd, Mack 300, 52,000 GVW, \$11,500/OBO 814-793-3439 evenings



1987 L8000 Ford 16' Silage Bed w/Electric Tarp, Allison Automatic, 3208 Cat, 32000 GVW, \$7,500/OBO 814-793-3439