

15 CONSTRUCTION EQUIPMENT

(2) Dresser 175C crawler loaders, 1983-85 approx, SS# 3231, \$17,500 1972 SS# 1215, \$13,900 Both have rebuilt trans & partial eng rebilts in last 5 years Buy 1 or pkg deal! Call (610)395 6857 ext 26

JD 450B dozer, good U/C, 6 way blade ROPS \$12,500 obo Cat 955L ldr good U/C, ROPS, runs good \$17,500 obo '77 Mack single axle dump truck w/10 dump, pintle hitch, air brakes \$5,900 obo 570 924-3116

AC 5000# gas eng forklift, 15" air tires, 144" lift Call anytime (856)358-8762

2 cyl, Deutz diesel, 27hp with clutch and 15hp Curtis air compressor, mounted on skid \$2700 (717)626-1394

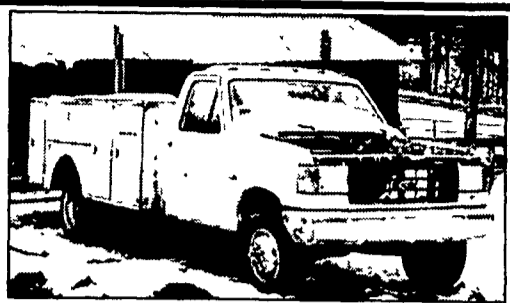
1999 Alamo boom mower, rear mount, 60" deck, 17' reach, Ex cond \$5,900 (856)769-0787

WESTERN ALFALFA for sale, 3x4 sq dairy quality Delivery avail Bernard Wrede, (800)786 9794 mobile (402)649-0661, email wrede@ptcnet.net

Bobcat 963, 1999, 850 hrs, 2 spd, 105hp, 82" bkt, \$19,000 717-786-0256
4-Rent 25' scissor lift (717)786-0256

Titan industrial equipment 7000 & 7500 generator, trash pump, 18,000 GPH, air comp, 8 gal port brand new 717 442-8753

(2) 2002 Zim mobile concrete mixers, 10 yd like new mounted on '94 & '96 Mack tri-axle 300 Bbl silo Ken 607-276-6864



8 Door Contractor Body in Decent Shape \$500. Cab, Chassis, 6 Rims, & Tires Free With Body Purchase (610) 488-7632 cell (484) 256-3402



1980 Datsun 8,000 Lb., Great Shape \$7,650 717/367-4830



'00 Bobcat 325 Mini Excavator w/Front Blade, 831 Hours \$14,800 717-733-7408

Celebrating Our 20th Year 1983-2003

JERRE MARTIN REPAIR

391 N. Farmersville Rd., Ephrata, PA 17522

(Just minutes off RT 222)

717-859-3283 Toll Free 877-317-5348

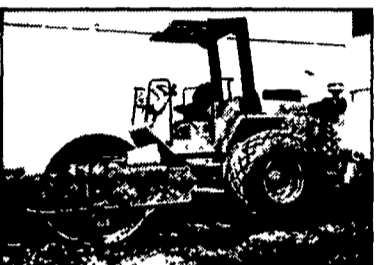
Celebrating Our 20th Year 1983-2003



Cat D4H, 6 Way Blade \$25,000



Fiat Allis FL9 Crawler Loader, 4N1 Bkt., Rebuilt Eng. \$13,500



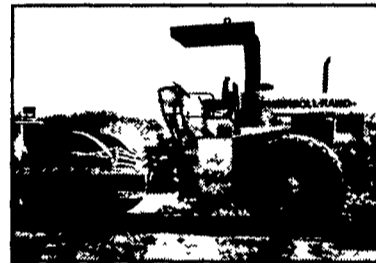
'97 Hamm 2420, 84" Drum Drive \$29,000



'93 Cat 320N Excavator, 8.5' Transport Width, Quick Coupler \$42,000



Komatsu D21S Crawler Loader (Late Model) \$13,000



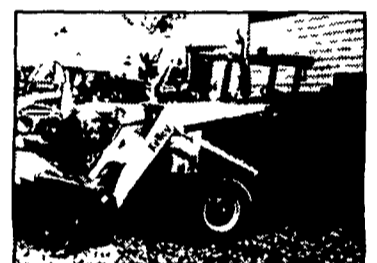
IR SD100D Roller \$32,000



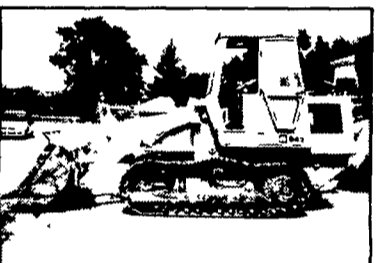
JD 570A, Excellent \$16,200



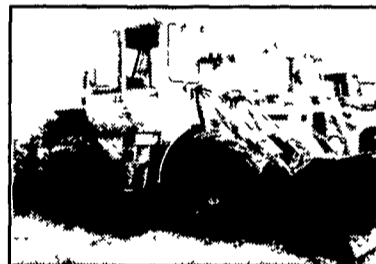
'99 JCB 8015 mini-excavator, like new \$11,500



MF 165 Multi-Power w/Loader \$55,000



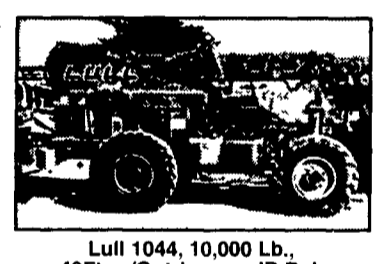
'82 Cat 943 Crawler/Loader, Rebuilt Eng., New Undercarriage \$25,000



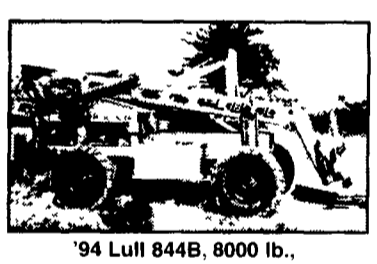
JD 544 Loader \$12,500



'98 Samsung SE130 \$32,000



Lull 1044, 10,000 Lb., 42Ft. w/Outriggers, JD Dsl. \$23,500



'94 Lull 844B, 8000 lb., 36' Reach \$22,000



Fiat Allis FL14C Loader \$13,500



Bobcat 231 Excavator, Good Cond. \$12,500



'98 JD 410E, 4x4, E-hoe, 2600 hrs \$32,000



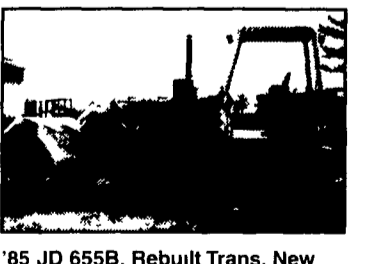
'99 Kobelco SK150 LC Series IV \$51,000



'97 Traverslift 6035 w/JD dsl \$23,000



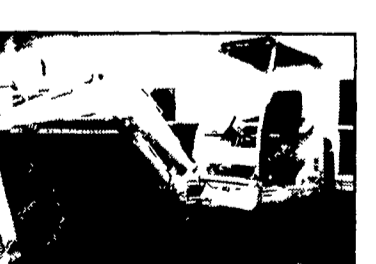
Takeuchi TB035 excavator good cond \$13,500



'85 JD 655B, Rebuilt Trans, New Paint \$19,000



Cat TD8 Dresser, 6 Way Blade, Ex. Cond. \$13,000



Takeuchi TB025 \$12,500



Cat 953, new U/C \$34,000



JD 550G, 6-way, factory cab \$24,000

WE ARE BUYERS FOR LATE MODEL CONSTRUCTION EQUIPMENT NEEDING REPAIRS

Road Service Available Now, Custom Repairs On All Makes Construction Equipment

'99 Cat 226 skid loader. . \$15,000

'97 Hamm 2420 roller, 84" drum drive \$29,000

**Sales
Service
Rental
Repairs**



JD 544E Wheel Loader w/American Coupler \$31,000