

A LESSON WELL LEARNED... LANCASTER FARMING'S CLASSIFIED ADS GET RESULTS!

Mid Maryland Rentals, Inc.

www.midmd.com
sandy@midmd.com

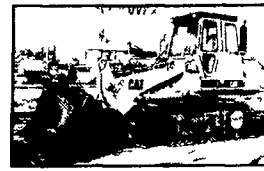
8865 Baltimore National Pike
PO Box 186 Middletown, MD 21769

Phone (301) 371-5500
Fax. (301) 371-9299

Financing Available



1993 Cat 953B, factory cab w/ac v g undercarriage & condition work ready, \$65,000



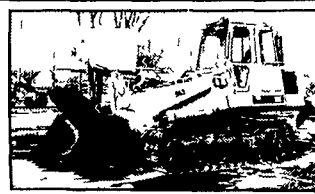
1996 Cat 963BLGP, factory cab w/ac gp bucket w/teeeth 3rd valve v g undercarriage & condition work ready \$79,500



1989 Cat 953LGP, factory cab ripper v g undercarriage & condition work ready \$44,000



Telescopic Forklifts, Lull Terex 5,000-10 000 lbs, from \$16,500



1990 Cat 963LGP, factory cab gp bucket w/teeth v g undercarriage & condition work ready \$45,000



1994 Hitachi EX120-2 36" bucket v g undercarriage & condition 3 500 hours work ready \$33,500

- 1998 Case 580LII cab, 4 wheel drive, standard hoe auxiliary hydraulics v g tires recent paint work ready \$32,500
- 1994 Cat D5CIII 6 way blade new undercarriage 3 400 hrs work ready \$32,500
- 1992 Cat 416B 4 wheel drive cab e stick v g tires & condition work ready \$25,500
- 1992 Hyster C830B 66 smooth drum drum drive cab w/AC v g tires & condition work ready \$24,000
- 1998 Komatsu PC60 7 14 000lb excavator cab 24 bucket, steel tracks low hours clean \$27,500
- 1998 Komatsu PC27R 8 orops, 16 bucket rubber tracks blade low hours work ready \$17,000
- Scattrak 1500D gp bucket auxiliary hydraulics Kubota turbo diesel v g tires & condition 700 hrs \$13,000

15

**CONSTRUCTION
EQUIPMENT**

We at Weaco Equipment would like to Thank all our Valued Customers,
and Wish Everyone a Joyous Christmas & Happy New Year!



98 JCB 208S ROPS 360 Hrs 75% Tires Slide Hoe \$20,500

NEW ADDITIONS

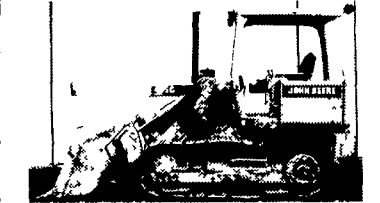
- 01 ASV Positrack 4810 Cab w/Heat 445 Hrs Good U/C \$29,500
- 99 JCB 208S ROPS 410 Hrs 90% Tires Slide Hoe CALL
- 94 Bobcat 773 3775 Hrs 80% Tirs CALL
- 98 Gehl SL 6635 1095 Hrs 80% Tires \$10,500
- 94 Cat 416B Cab 5120 Hrs 4x4 Ext Hoe 80% Tires \$23,000
- 85 Kato HD77 CALL



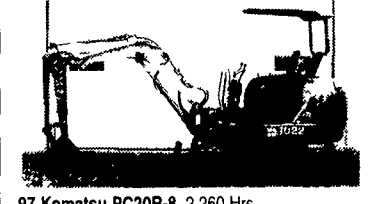
00 Hitachi EX120-5 Cab 1425 Hrs 20 Shoes Plumbed Ex Cond \$52,500



- 96 Komatsu PC50UU-2E, 3 740 Hrs Steel Tracks w/Blade \$14,500
- 96 Komatsu PC50UU-2E, Canopy 3 350 Hrs Road Liner Shoes w/Blade \$14,500
- 96 Komatsu PC50UU-2E Canopy 3 665 Hrs Road Liner Shoes w/Blade \$14,500
- 96 Komatsu PC50UU-2E, Canopy 3 912 Hrs Road Liner Shoes w/Blade \$14,500



97 JD 455G V, ROPS 4 900 Hrs 60% UC 3rd Valve New Paint \$25,000
79 Int'l 125E, 5 370 Hrs 75% U/C \$11,500



- 97 Komatsu PC20R-8, 2 260 Hrs Rubber Tracks w/Blade \$12,000
- 94 Komatsu PC20-7E, 2 425 Hrs Rubber Tracks w/Blade \$10,000
- 96 Komatsu PC207-E, Canopy 2 644 Hrs Rubber Tracks w/Blade \$10,500
- 94 Komatsu PC20-7, Canopy 2 830 Hrs Rubber Tracks w/Blades \$9,500
- 97 Komatsu PC30R-8, 1 800 Hrs Steel Tracks w/Blade \$13,500



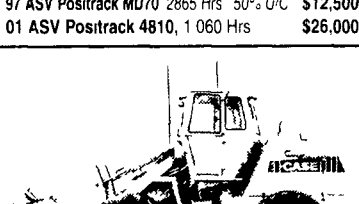
JD 710C, Cab 4220 Hrs 4x4 Ext Hoe New Tires \$21,000

- 96 Cat 416B, Cab 4x4 Ext Hoe Plumbed \$22,500
- 99 Case 580 SL Cab 3000 Hrs 4x4 Ext Hoe \$32,000



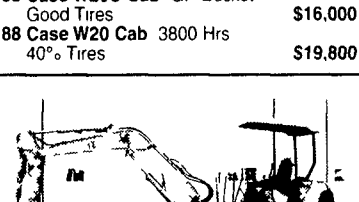
99 ASV Positrack HD4520, 240 Hrs 90% U/C \$23,000

- 99 ASV Posi Track MD 2810 860 Hrs \$21,000
- 99 ASV Positrack, MD 2800 CALL
- 98 ASV Posi Track MD 2810 1 280 Hrs 4 in 1 Bkt \$19,000
- 97 ASV Positrack MD70 2865 Hrs 50% U/C \$12,500
- 01 ASV Positrack 4810, 1 060 Hrs \$26,000



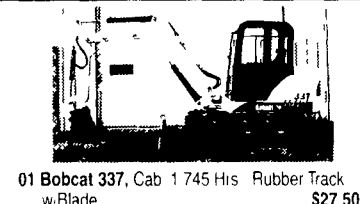
83 Case W20C Cab GP Bucket Good Tires \$16,000

- 88 Case W20 Cab 3800 Hrs 40% Tires \$19,800



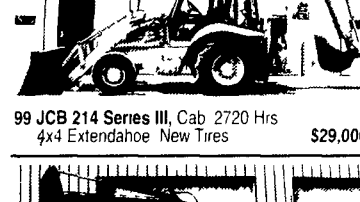
98 Komatsu PC40MR-1, 3 790 Hrs Steel Tracks w/Blade New Paint \$18,000

- 98 Komatsu PC40R-8, 3 930 Hrs Steel Tracks w/Blade \$16,000
- 98 Komatsu PC40R-8, 2 523 Hrs Steel Tracks w/Blade Plumbed \$16,000
- 97 Komatsu PC40R-8 Cab 3850 Hrs Steel Tracks w/ Blades \$19,000
- 97 Komatsu PC40R-8, Canopy 3 970 Hrs Rubber Tracks 6-Way Blade \$17,000
- 93 Komatsu PC40-7, 4 285 Hrs Rubber Tracks w/Blade \$13,000
- 92 Komatsu PC40-7 2590 Hrs Rubber Tracks w/ Blade \$13,000
- 92 Komatsu PC40-7, 4 420 Hrs Rubber Tracks w/Blade \$13,000
- 91 Komatsu PC40-7, Canopy 4 170 Hrs Rubber Tracks w/Blade \$13,000
- 91 Komatsu PC40-7, Canopy 5 230 Hrs Rubber Tracks w/Blade \$12,000



01 Bobcat 337, Cab 1 745 Hrs Rubber Track w/Blade \$27,500

- 99 Takeuchi TBO14, ROPS 1 275 Hrs Rubber Tracks Backfill Blaoe \$9,750

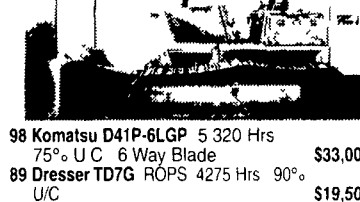


99 JCB 214 Series III, Cab 2720 Hrs 4x4 Extendahoe New Tires \$29,000



94 Linkbelt LS 2700C-2, 3 850 Hrs Manual Quick Coupler Good Cond \$33,000

- 89 Cat EL200B, Cab 32 in Shoes 10ft 6 in \$23,000
- 95 Kobelco SK210, 8 900 Hrs \$29,000



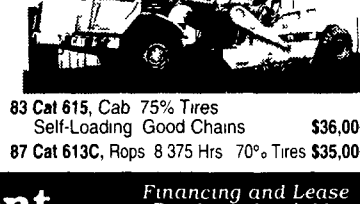
98 Komatsu D41P-6LGP 5 320 Hrs 75% U.C. 6 Way Blade \$33,000

- 89 Dresser TD7G ROPS 4275 Hrs 90% U/C \$19,500
- 86 Fiat Allis FD5, OROPS 5 000 Hrs 6-Way Blade \$15,500
- 87 Fiat Allis FD5, Canopy 60% U.C \$13,500



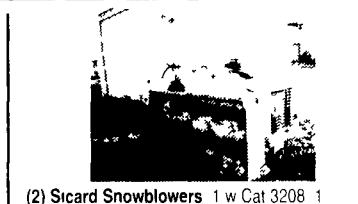
99 Bobcat 863, 3685 Hrs 50% Tires \$9,500

- 00 Case 1840 975 Hrs New Tires \$11,900
- 99 Bobcat 863 3685 Hrs 50% Tires \$9,500
- 96 NH LX 485, 2 180 Hrs 50% Tires \$8,900
- 00 Cat 236, 1485 Hrs Tooth Bkt \$14,000
- 99 Mustang 2050, 795 Hrs 60% Tires \$10,500



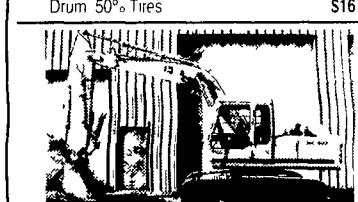
83 Cat 615, Cab 75% Tires Self-Loading Good Chains \$36,000

- 87 Cat 613C, Rops 8 375 Hrs 70% Tires \$35,000



(2) Scard Snowblowers 1 w Cat 3208 1 w Cummins 903 Engine \$4 500/Ea

- 2001 Super PAC 540 Canopy 82 Hrs 54 Drum Drive \$23,000
- Bomag BW212D 1 900 Hrs Canopy 84 Drum Drive \$29,000
- 84 Ingersoll Rand SP56 ROPS 7 280 Hrs 84 in Drum 50% Tires \$16,000



95 JD 590D 5 530 Hrs New Paint Plumbed \$36,000

- 94 Hitachi EX 120-3 Cab 4 630 Hrs 20 in Shoes \$28,000

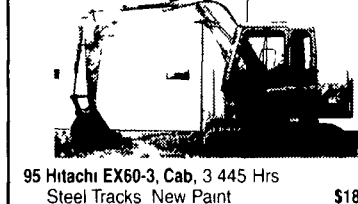


00 Bomag BW202ADH-2 Tandem Vibratory Smooth Drum Asphalt Roller 1 745 Hrs Water System \$26,000



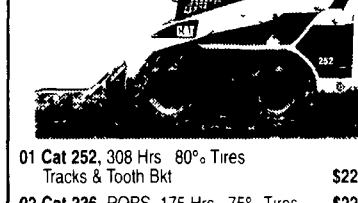
96 Cat 963B, Cab AC 7550 Hrs 4N1 bkt 60% U/C New Paint \$75,000

- 87 Cat 963 OROPS 5 970 Hrs 75% U.C \$34,000
- 85 Cat 963 OROPS Good U/C GP Bucket 70% U.C \$29,000



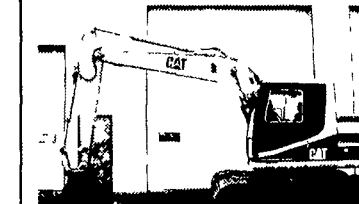
95 Hitachi EX60-3, Cab, 3 445 Hrs Steel Tracks New Paint \$18,000

- 90 Cat E70B, Cab 18 in Shoes 34 in Bkt \$17,500
- 91 E70 Cab 3314 Hrs 18 Steel Shoes \$18,000



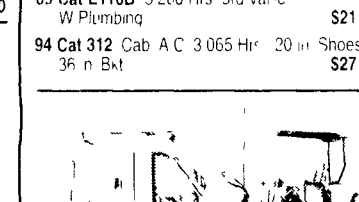
01 Cat 252, 308 Hrs 80% Tires Tracks & Tooth Bkt \$22,000

- 02 Cat 236, ROPS 175 Hrs 75% Tires \$22,000
- 00 Cat 236, ROPS 1485 Hrs Tooth Bkt \$14,000
- Komatsu 30 Forklift, 6 600 lb Lift Gas Eng \$7,000



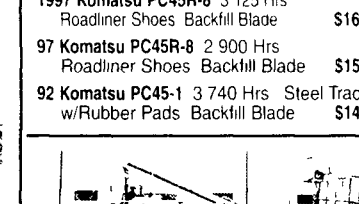
95 Cat 312 Cab A C 5 015 Hrs 30 in Shoes 9ft 2 in \$33,000

- 89 Cat E110B 5 200 Hrs 3rd Valve W Plumbing \$21,000
- 94 Cat 312 Cab A C 3 065 Hrs 20 in Shoes 36 in Bkt \$27,000

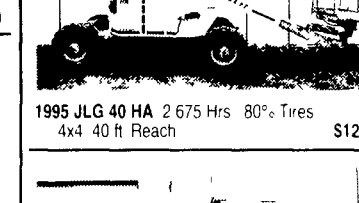


1997 Komatsu PC45R-8 3 125 Hrs Roadliner Shoes Backfill Blade \$16,000

- 97 Komatsu PC45R-8 2 900 Hrs Roadliner Shoes Backfill Blade \$15,500
- 92 Komatsu PC45-1 3 740 Hrs Steel Tracks w/Rubber Pads Backfill Blade \$14,000

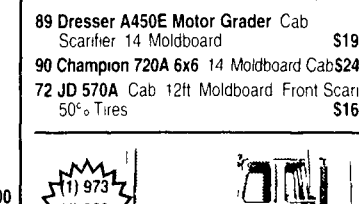


1995 JLG 40 HA 2 675 Hrs 80% Tires 4x4 40 ft Reach \$12,500



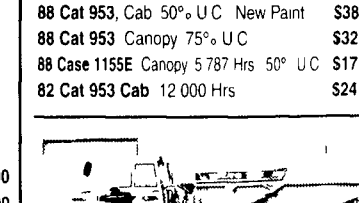
89 Dresser A450E Motor Grader Cab Scarifier 14 Moldboard \$19,500

- 90 Champion 720A 6x6 14 Moldboard Cab \$24,500
- 72 JD 570A Cab 12ft Moldboard Front Scarifier 50% Tires \$16,000



88 Cat 953, Cab 90% U.C \$39,500

- 88 Cat 953, Cab 50% U.C New Paint \$38,000
- 88 Cat 953 Canopy 75% U.C \$32,000
- 88 Case 1155E Canopy 5 787 Hrs 50% U.C \$17,500
- 82 Cat 953 Cab 12 000 Hrs \$24,000



92 Volvo 825B 7230 hrs 6x6 25% tires new paint \$36,000

Weaco Equipment

Financing and Lease
Purchase Available
No Sunday Calls

4009 Conrad Weiser Parkway, Womelsdorf, PA 19567

Located 4 Miles East Of Myerstown on Rt. 422

sales@weacoequipment.com

610/589-5555

Toll Free 877/529-9328

Rentals Available
Day, Week, or Month