

(Continued from Page A12)

11 00 48s 11 00 12 50 mostly 12 00 56s  
12 00-12 50 mostly 12 50 64s 11 00-12 50 mostly  
12 50 80s 12 00 9 50 Hamlin 80s 10 00 100s  
9 00-10 00 Mid-Season 80s 11 00-11 50 -TAN-  
GFIOS MARKET STEADY 4/5 buctns FI  
Orlando 100s 13 00 -TANGFRINE'S MAR-  
KET STEADY 4/5 buctns FI Sunburst 80s  
20 00-21 00 100s 18 00 120s 15 00-16 00 150s  
14 00 180s 10 50-11 00  
BFERRIES -BIUBFERRIES MARKET  
HIGHER flts 12 4-oz cups with lids CI med  
lge 21 00-22 00 mostly 22 00 -CRANBERRIES  
MARKET STEADY ctns 24 12-oz filmbags  
MA Late Howe 40 00 -MISC BFERRIES MAR-  
KET ABOUT STEADY flts 12 5-6-oz cups  
with lids MX Blackberries 16 00-18 00 mostly  
16 00 -RASPBERRIES MARKET CI HIGH  
FR. CA STEADY flts 12 1 1/2-pt bskts with lids  
CA Red 20 00 CI Red 18 00 -STRAWB-  
ERRIES MARKET FI LOWER, CA STEADY  
flts 12 1-pt bskts CA med-lge one label 35 00 FI  
med 20 00-26 00  
MELONS -CANTALOUPS MARKET  
HIGHER 1/2 ctns GU 9s 11 00-12 00 12s  
9 00-12 00 mostly 11 00-12 00 15s 14 00-15 00  
HONEYDEWS MARKET ABOUT  
STEADY 3/4 ctns DR 5s 12 00 6s 12 00 GU 5s  
12 00-13 00 6s 12 00-13 00 8s 12 00-13 00 MX 5s  
11 00 6s 11 00 -MISC MELONS OFFFRINGS  
INSUFFICIENT TO QUOTE  
-WATERMELONS MARKET ABOUT  
STEADY ctns per ctn FI Red Flesh Seedless  
Type 5s fair cond 8 00 6s 12 00 Sangria 3s  
14 00-15 00 fair cond 8 00 4s 13 00 GU Sangria  
3s 12 00-14 00 4s 12 00-14 00 MX Red Flesh  
Seedless Type 4s 20 00

NON-CITRUS FRUITS APPLES MAR-  
KET STEADY ctns trypk PA US FxFcy Fuji  
56s 22 00 88s 20 00 WA WAFcy Red Deli-  
cious 56s 24 00 64s 24 00 preferred labels  
26 00-28 00 72s 24 00 preferred labels  
26 00-28 00 80s 18 00-20 00 preferred labels  
24 00-28 00 88s 18 00-21 00 mostly 18 00-20 00  
some 22 00 preferred labels 24 00-28 00 100s  
17 00-21 00 113s 18 00-19 00 125s 19 00 Golden  
Delicious 64s preferred labels 28 00-30 00 72s  
preferred labels 28 00-30 00 80s 26 00 one label  
30 00 88s 26 00 one label 28 00 100s 22 00 113s  
20 00 125s 20 00 Granny Smith 88s 22 50-25 00  
some 27 00 one label 28 00 100s 21 50-22 50 one  
label 24 00 113s 21 50 Fuji 64s 32 00 one label  
36 00 72s 32 00 34 00 80s 28 00 32 00 88s  
28 00-32 00 100s 22 00 one label 29 00 113s  
18 00 125s 16 00 138s 16 00 U S ExFcy Golden  
Delicious 64s 24 00 72s 24 00 80s 24 00 88s  
24 00 100s 22 00 113s 20 00 125s 20 00 ctns  
celpk NY U S ExFcy McIntosh 80s 18 00-20 00  
100s 18 00 U S One McIntosh 80s 10 00 100s  
9 00 VT U S ExFcy McIntosh 80s 24 00 U S  
Fcy McIntosh 80s 14 00 96s 11 00 120s 9 00 lge  
ctns WA WAFcy Red Delicious 60s 28 00  
ctns 12 3-lb filmbags PA U S FxFcy Rome 2  
1/2 min 9 00 U S Fcy Red Delicious 2 1/2 min  
8 50-9 00 Jonagold 2 1/2 min 7 00 CON-  
TROLLED ATMOSPHERE STORAGE ctns  
trypk WA WAFcy Gala 64s one label 36 00  
72s one label 36 00 80s 34 00 88s 32 50-34 00  
some 38 00 one label 40 50 100s 24 00-28 00  
some 30 00 113s 20 00 -APRICOTS OFFER-  
INGS LIGHT ctns 2 lyr trypk CL Castlebrite  
78s 14 00-15 00 -AVOCADOS MARKET  
ABOUT STEADY ctns 2 lyr MX Hass 48s  
27 00-28 00 mostly 28 00 ctns 1 lyr FL U S  
Comb Various Greenskin Varieties 6s

9 00-10 00 7s 10 50 11 00 8s 10 50-11 00 9s  
10 50 11 00 4/5 buctns FI U S Comb Various  
Greenskin Varieties 16s 30 00 -BANANAS  
MARKET STEADY 40 lb ctns IMPORT 11 00  
fair qual 9 00-10 00 mostly 9 00 sml 7 50-8 00  
petite 13 50 40 lb ctns bagged IMPORT 10 50  
-CHERRIES OFFFRINGS LIGHT 5 kg car-  
tons bagged CL Bing xlge sz 28 00-30 00 Rain-  
ier jbo fair cond 12 00-18 00 xlge sz fair cond  
18 00 25 00 ord cond 8 00-12 00 -FRUITS  
OTHER ctns 1 lyr CA Apple Pears -Shinko 13s  
12 50 14s few 12 00 FI Carambola - Star Fruit  
20s 12 00-15 00 mostly 14 00 25s 12 00 15 00  
mostly 14 00 30s 14 00-15 00 MX Cactus Pears  
Red 20s 13 00 -GRAPE'S MARKET PER-  
LETTE AND FLAMESEDFLESS LOWER,  
OTHERS ABOUT STEADY  
19 lb lugs bgd CA U S One Red Globe lge  
17 00-18 00 med-lge 12 00-14 00 Crimson Seed-  
less lge 21 00 med-lge 15 00-16 00 mostly 15 00  
med fair cond 10 00-12 00 ord cond 8 00 18 lb  
lugs bgd CI Perlette med-lge 26 00 med  
18 00-22 00 mostly 18 00-20 00 sml-med  
18 00-20 00 Thompson Seedless lge 35 00-36 00  
med-lge 24 00-28 00 some 30 00 med  
20 00-22 00 Flame Seedless med-lge 20 00-26 00  
mostly 24 00-26 00 preferred labels 28 00-32 00  
sml-med 16 00-20 00 mostly 16 00-18 00 White  
Seedless Type evlge 38 00-40 00 lge 30 00-34 00  
mostly 32 00 med-lge 24 00-28 00 18 lb lugs  
wrpd CI Thompson Seedless med-lge 40 00  
-KIWI FRUIT MARKET STEADY 9 kg cntrs  
IT Hayward 33 sz 18 00 -MANGOES MAR-  
KET ABOUT STEADY flts 1 lyr BR Tommy  
Atkins 7s 4 75-5 00 9s 4 00 EC Tommy Atkins  
8s 5 50 fair cond 3 00-4 00 9s 5 50 fair cond  
3 00-4 00 10s fair cond 3 00-4 00 12s few 5 00  
fair cond 3 00-4 00 HT Francis 9s 8 00-8 50 10s

8 00 8 50 50 lb ctns PR Green Cooking Type  
55 00 NECTARINES OFFFRINGS LIGHT  
ctns 2 lyr trypk CI Big John 44s 22 00 Early  
Diamond 52s 16 00 -PAPAYA MARKET  
STEADY 40 lb ctns DR Green Cooking Type  
14 00 FI Green Cooking Type 13 00-14 00 4 kg  
containers BR Golden 9s few 9 00 35-40 lb ctns  
BZ Maradol red 17 00 MX Maradol red  
16 00-17 00 PFACHES OFFFRINGS LIGHT  
ctns 2 lyr trypk CI Various Yellow Flesh Vari-  
eties 52s 16 00 -PEARS MARKET STEADY  
4/5 buctns wrpd OR U S One D'Anjou 80s  
21 00-22 00 90s 20 00-22 00 100s 20 00 110s  
19 00 WA U S One D'Anjou 70s 21 50 80s  
21 50-22 00 90s 20 50-22 00 100s 20 50 CON-  
TROLLED ATMOSPHERE STORAGE 4/5  
buctns wrpd OR U S One Bartlett 100s 23 00  
WA U S One Bartlett 80s 26 50-27 00 90s  
22 50-25 00 100s 22 00-22 50 -PEARSIMMONS  
MARKET STEADY ctns 1 lyr SP 12s fr qual  
11 50 KAKI 14s 14 50 KAKI fr qual 11 50  
KAKI 15s 14 50 KAKI fr qual 11 50 KAKI 16s  
fr qual 11 50 KAKI 17s 14 50 KAKI fr qual  
11 50 KAKI 18s 14 50 KAKI fr qual 11 50  
KAKI 20s 13 50 KAKI fr qual 11 00 KAKI 24s  
fr qual 10 00 KAKI PINFAPPLES MARKET  
ABOUT STEADY ctns 1 lyr CR golden ripe 6s  
12 00-14 00 mostly 12 00 some 10 00-11 00 one  
label 16 00 7s 11 00-13 00 mostly 11 00-12 00  
some 10 00 8s 10 00-12 00 mostly 11 00-12 00  
EC golden ripe 6s 13 00 ctns 2 lyr CR 12s 15 00  
-PLANTAINS MARKET STEADY 50 lb ctns  
CB Yellow 17 00 EC Green 17 00 -PLUMS OF-  
FRINGS LIGHT ctns 2-lyr CI Farlqueen  
78s 24 00 10 kg containers loose CL Red Beaut  
70 sz 15 00-16 00 80 sz 15 00-16 00 90 sz 14 00  
-POMEGRANATES TOO FEW SALES TO  
QUOTE -PRUNES OFFFRINGS INSUFFI-  
CIENT TO QUOTE

**Philadelphia Onions, Potatoes**

Philadelphia Terminal Market

December 17, 2003

Report Supplied By USDA

ONIONS AND POTATOES -ONIONS  
DRY MARKET ABOUT STEADY US#1 OR  
GENERALLY GOOD QUAL AND COND  
UNLESS OTHERWISE STATED Yellow  
Globe Type NY 50 lb sks med 8 00-10 00 mostly  
9 00 sml-med 6 00 mstr cntr 20 2 lb mshsks sml  
med 6 00 6 50 Hybrid ID/OR 50 lb sks col  
13 00-13 50 jbo 12 00 13 00 mostly 12 00-12 50  
fair cond 10 00 UT 50 lb sks jbo 12 00 13 00  
mostly 13 00 Swccts PE 40 lb ctns col 22 00 jbo  
21 00 White ID/OR 50 lb sks jbo 18 00 some  
14 00 Boilers ID/OR 25 lb sks med lge 18 00 Red  
Globe Type ID/OR 25 lb sks med lge 9 50 NY  
25 lb sks jbo 8 00 10 00 mostly 8 50-9 00 med  
5 00-7 00 mostly 6 00-7 00 WA 25 lb sks jbo  
11 00 POTATOES MARKET ABOUT  
STEADY US#1 SZ A WASHI DOR BRUSH  
FD UNLFS OTH RWISF STATED Russet  
Burbank ID bld 10 5-lb sks non sz A 8 00 8 50  
50 lb ctns 70s 16 00 50s 16 00 60s 15 00 16 00  
mostly 16 00 40s 15 00 16 00 80s 13 00 14 00 90s  
11 00 12 00 mostly 11 00-11 50 100s 9 50 10 50  
mostly 10 00 some 11 00 U S Two 50 lb sks 6 oz  
min 7 00 8 00 Norkotah ME 50 lb ctns 60s 11 00  
70s 11 00 80s 10 00 90s 9 00 100s 8 00 Round  
Red CD 50 lb sks 7 00 sz B 9 00 MN/ND 50 lb  
ctns 14 00 sz B 14 00 50 lb sks 8 00-9 00 some  
10 00 sz B 12 00 NY 50 lb sks sz B 9 00-10 00  
Round White CD Prince Edward Island 50 lb  
sks 5 75-7 00 lge 7 00-8 00 11 50 lb sks 5 00 lge  
7 00 PA 50 lb sks fair qual 4 00-4 50 lge fair  
qual 5 50 6 00 lcal Requal 50 lb sks 4 50-5 00  
lge 6 50 7 00 Yellow Type Yukon Gold NY 50  
lb sks 12 00 sz B 14 00 Creamers 1-1 1/2 28 00  
WA 50 lb ctns 22 00 sz B 20 00 1 1/2 min 40 00

**Philadelphia Herbs**

Philadelphia Terminal

Prices as of December 17, 2003

Report Supplied By USDA

MISC HERBS ANISE OFFFRINGS INSUFFICIENT TO  
QUOTE  
ARRUGULA 4 lb cartons CA Baby Type 14 00 fair cond 11 00 4/5  
buclts bchd FI 24s 11 00-14 00 ctns bchd TX 24s few 15 00 -BASIL  
MARKET HIGHER IS STEADY ctns bchd FI 15s 9 00-10 00  
previous commitments few 8 00 1 kg ctns bchd IS 12s 11 00-13 00  
-CELFRAC (CELFRY ROOT) 20 lb crts bse CD 10 00 -CHIVES 1  
kg ctns bchd IS 12s 16 00 -CILANTRO MARKET ABOUT  
STEADY 4/5 buclts bchd FI 30s 11 00 few 10 00 approx 20 lbs  
TX 30s few 16 00 ctns bchd CA 30s 10 00 TX 30s 11 00 DIII MAR-  
KET FI SLIGHTLY HIGHER TX ABOUT STEADY ctns bchd TX  
24s 11 00-12 00 crts bchd FI 24s 9 00-10 00 few lower ctns approx 20  
lb TX 24s few 15 00 -DRY FSC HAILOT 10 lb sks FR 8 00 NI  
8 50 9 00 -FMON GRASS 30 lb ctns CA 22 00 MARIORAM 1 kg  
ctns bchd IS 12s 13 00 -MINT crts bchd FI 12s few 9 00 10 00 ctns  
bchd FI 12s 12 00 1 kg ctns bchd IS 12s 10 00 -ORGANO 1 kg ctns  
bchd IS 12s 13 00 -ROSEMARY 1 kg ctns bchd IS 12s 13 00 -SAGE  
1 kg ctns bchd IS 12s 13 00 SALSIFY OFFFRINGS INSUFFI-  
CIENT TO QUOTE  
TARRAGON 1 kg ctns bchd IS 12s 17 00 THYME 1 kg ctns  
bchd IS 12s 13 00 WATER RISS ctns bchd FI 12s 7 00 24s  
11 00 11 50

**Lebanon Produce Auction**

Reidsville, Pa.

Report Supplied by Auction

Dec. 16, 2003

POTATOES RFD 175 WHITE 1 75-3 00 BOTH BU  
PUMPKINS NECK 125 EACH  
SALE DAY NEXT WEEK TUES 9 30

**Livestock Cooperative Auction Market**

Of North Jersey

Hackettstown, N.J.

Report Supplied by Auction

Tuesday, December 16, 2003

CAI VES 11 4 00  
COWS 30 74  
EASY COWS 20 41  
FFEDERS 300-600 1 BS 25 85  
HEIFERS 25 73  
BULLS 43 78  
STEERS 15 90 1  
HOGS 36 43  
ROASTING PIGS EACH 15 00-39 00  
BOARS 28 58  
SOWS 25 26 1  
SHEEP 38 11  
LAMBS FA 25 00-106 00  
LAMBS PER 1 B 43 1 49  
GOATS FA 65 00 147 50  
KIDS FA 7 00 75 00  
HIDES 3 00-32 00  
TOTAL 765

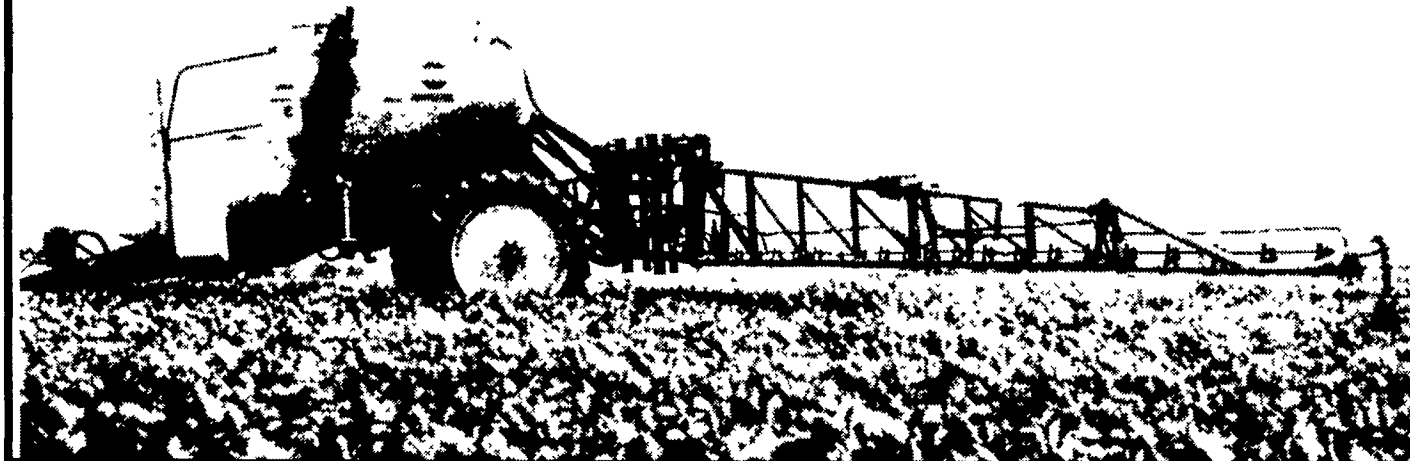
**NEW NAVIGATOR**  
- setting a new industry standard!



Performance Without Compromise -  
Economically Priced For Any Size  
Farming Operation



Visit us at: [www.hardi-us.com](http://www.hardi-us.com)



- 575 & 1100 gallon tanks
- 45' - 100' Eagle™ (HY & HZ) hydraulic fold booms
- HARDI® patented self-stabilizing coil spring & trapeze boom suspension with shock absorber
- HARDI® Paralift™ (20"-70" boom height adjustment)
- HARDI® self-priming diaphragm pumps or centrifugal pumps
- 80 or 130 gallon combined flush tank & working platform
- HARDI® "Smart-Valve" fully integrated fluid control system (only 3 valves operate all possible fluid functions)
- 20 or 40 gallon integrated foam marker tanks
- 60"-120" infinite adjustable axle inserts
- 60"-120" optional coil spring suspended axle inserts
- 24" or 28" unobstructed axle & under frame clearance
- 11.2 x 38", 12.4 x 42" or 320/90R46" high clearance tire assemblies

.....AND MUCH MORE!

<b>CARLISLE, PA</b> CARLISLE FARM SERVICE 260 York Road 717-243-4419	<b>CHAMBERSBURG, PA</b> CHAMBERSBURG FARM SERVICE 975 S. Main St. 717-264-3533	<b>EASTON, PA</b> FORKS EQUIPMENT, INC. 4404 Glover Rd. 610-252-8828	<b>KLINGERSTOWN, PA</b> STANLEY'S FARM SERVICE RD #1 Box 46, Off Rt 125 570-648-2088
<b>MIFFLINBURG, PA</b> ALLEN HOOVER REPAIR RR 1, Box 227 570-966-3821	<b>NEW HOLLAND, PA</b> ABC GROFF, INC. 110 S Railroad Ave 717-354-4191	<b>NEWPORT, PA</b> SMITH'S FARM EQUIPMENT 30 Acker Rd. 717-567-3562	<b>NEW RINGGOLD, PA</b> ECKROTH BROS. FARM EQUIPMENT Rt. 443 & 895 570-943-2131
<b>OREFIELD, PA</b> ECKROTH EQUIPMENT 4910 Kernsville Road 610-366-2095	<b>RICHLAND, PA</b> LEBANON VALLEY IMPLEMENT 700 East Linden St 717-866-7518	<b>ALTOONA/CRESSON, PA</b> HINES EQUIPMENT 814-742-8171 814-886-4183	

**2004 AG DIRECTORY**  
The year 2004 marks the fourth annual *Lancaster Farming Ag Directory*  
Looking for the experts in field and barnyard management? Looking for the leaders for crop and farm financial planning? Then you've come to the right place  
For 2004, *Lancaster Farming* plans a new portion of the book - Call On The Experts! It's a component of our Ag Directory helpful for those seeking answers - right at your fingertips. The directory is scheduled in the Dec. 27 issue  
In 2003 the Ag Directory totaled 152 pages and was jam packed with contact names, numbers, addresses and even Websites from agriculture in our eight state region - including Pennsylvania and surrounding states. The essential reference book will include more names, addresses, phone numbers, and Web addresses than ever before  
Make the 2004 *Lancaster Farming Ag Directory* your source of expert information from the more than \$50 billion regional ag industry