

# YEAR-END TAX ADVANTAGES!

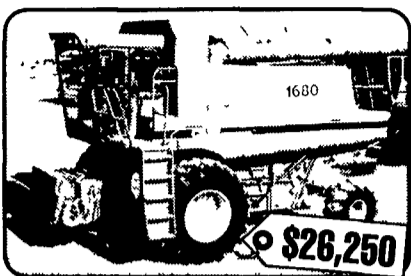
Your  
ent

6

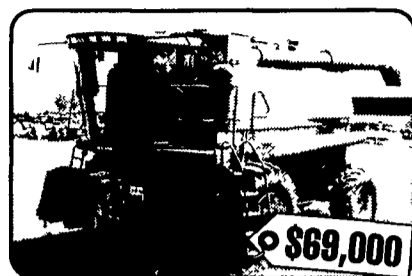
il  
n  
s!\*



**B 45194 1994 CIH 1688 4WD**, 4555 Hrs, Chopper, Tires: Dr-18.4x38 Duals, St-18.4x38, Field Tracker, Extra Concave, 208"



**B 42705 1986 CIH 1680 2WD**, 3671 Hours, Standard Rotor, Chopper, GLM, Field Tracker, 30.5x32 Drive Tires



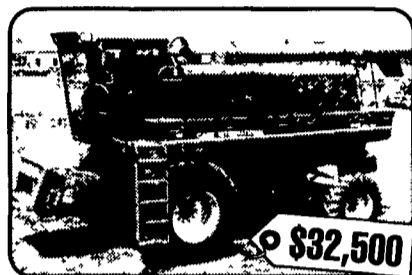
**B 44583 1995 CIH 2188 2WD**, 3158 Hrs, Spec Rotor, Rock Trap, Chopper, Tires: Drive-30.5x32, Steer-16.9x28, Field Tracker, GLM, Ag Leader GPS



**A 25652 1998 CIH 2366 4WD**, 2427 Hrs, Spec Rotor, Rock Trap, chopper, Spreader, Tires: Drive-30.5x32, Field Tracker, 2 Sp Hydro



**D 45535 1991 JD 9600 4WD Combine**, 3178 Hrs Rock Trap, GLM, Tires: Drive-30.5Lx32, Steer-18.4x26, Straw Chopper, Field Ready



**D 43509 1989 CIH 1640 2WD**, 3436 Hrs, Spec Rotor, No Chopper or Rock Trap, 24.5x32 Drive Tires

## Used Hay & Forage

### Mower Conditioners

- C 44888 CIH 8312 12
- C 32396 GH 2240-12
- A 26123 KH Gmd77hd 9 Disc
- A 25988 NH 1431 13
- C 32442 NH 1431 13
- D 50613 NH 1499

### Balers

- B 46503 CIH 8590
- B 44613 HE 4800
- B 46426 JD 327 w/Thrower 14 X 18
- B 45557 NH 570 Square JD
- D 50615 NH 575 JD
- A 26007 NH 595 JD
- C 32401 NH 846 4x4 Round

### Windrowers

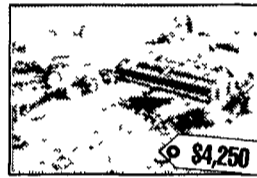
- A 26119 CIH 8830 S P
- A 25855 HE 8200
- A 24794 NH 1495 12

### Miscellaneous

- C 24710 CIH 600 Blower
- A 25525 GH 1580 Blower
- B 46428 NH 256 Rake
- B 46427 NH 256 Rake W/Dolly



**B 45557 1998 NH 570 Square Baler 1998** 1/4 Turn Chute Bale Chamber Extension 540 PTO Hyd Bale Density



**C 32396 GH 2240-12' Mower Conditioner** 540 PTO Rubber Rolls Tires 9.5x14 Good Blade Sections



**C 32401 NH 846 Dry Round Baler** 4x4 Bale Chain Gauge Wheels Pickup 540 PTO Tires 27 950 15



**A 24794 New Holland 1495 Windrower** 12 Cut 13 5x16 1 SL Tires Rubber Rolls



**C 44888 CIH 8312 Mower Conditioner** 1000 RPM PTO Good Knivestrolls 11Lx15 Tires

## Just Traded

### Intercourse Store

- 26375 HE 1345 Mower Cond
- 26374 CIH 510 Loader
- 26370 CIH 7130 MFD Tractor
- 26361 JD 4255 MFD Tractor
- 26362 JD 4010 2WD Tractor
- 26352 CIH 7240 MFD Tractor
- 26353 CIH 8950 MFD Tractor
- 26359 IH 300 Tractor W/ Ldr
- 26358 KR 2244-12 Disc
- 26354 KR 3127 27 Landsman
- 26355 GB 870 Loader
- 26348 KR 7400 21wr Disc
- 26349 KR 4426 Packer
- 25615 CIH 1660 2WD Combine
- 26139 IH 1460 Combine
- 26340 CIH 2166 Combine
- 26337 IH 1460 Combine
- 26335 CIH 1020 20 Platform
- 26310 KR 2443 Disc
- 26311 KR 2445 Disc
- 26313 Sch Rs320 Rock Picker
- 26314 Sch Wr5 Rock Windrower
- 26312 KR 4100 30 Field Cult W/3r Time

- 46501 CIH 2412 Cornhead
- 46502 CIH 2020 30 Platform
- 46449 CIH 1020 25 Platform
- 46448 CIH 1680 2wd Combine
- 46426 JD 327 Baler W/Thrower
- 46428 NH 256 Rake
- 46427 NH 256 Rake W/Dolly
- 46415 JD 6700 2WL Sprayer
- 46413 JD 220 20 Platform

### McAlisterville Store

- 32522 Wd 8320-20 Batwing Mower
- 32514 IH 884 2wd Tractor w/Ldr
- 32510 Farmall M Tractor
- 32511 IH 1466 2WD Tractor
- 32507 JD 4850 2WD Tractor W/Duals
- 32509 JD 7700 2wd Tractor
- 35208 KR 5213h Drill
- 32504 6690 Mfd Trac/Ldr
- 32501 CIH 7250 MFD Tractor

### Seaford Store

- 46494 CIH 2388 4WD Combine
- 50682 CIH 1666 Combine
- 46495 CIH 1083 Cornhead
- 46496 CIH 1020 30 Platform
- 50683 CIH 1020 20 Platform
- 46497 UM H130 Headercart
- 50674 CIH 7220 MFD Tractor
- 50675 JD 8430 4WD Tractor
- 50669 CIH 1680 Combine
- 50668 CIH 7240 MFD Tractor

### Middletown Store

- 46505 IH 815 Combine
- 46506 H 820-15 Platform
- 46503 CIH 8590 Baler
- 46499 IH Super H Tractor
- 46500 CIH 8010 4wd Combine



**A 25665 1982 Versatile 835 4WD Tractor** 6 000 Hrs PTO 20 8 X 38 Duals, 230 PTO HP



**A 25078 1988 CIH 1594 MFD ROPS** 2567 Hrs, Mechanics Special Diesel Canopy 540 PTO 3 Pt Hitch Tires 13 6x28 Front, 18 4x38 Rear Gear 2 Remotes 85 HP



**D 24788 1997 CIH 8920 2WD Cab** 1808 Hrs Diesel Cab W/fe 540/1000 Pto 3 Pt Hitch Top Link Pto Shld 155 HP+



**B 43094 1999 CIH 9370 Quadtrac** 4996 Hours, 1000 PTO 4 Remotes, 12 Speed Powershift, Bareback Hitch, 360 ENG HP



**B 44411 1992 CIH 5140 MFD ROPS** 2062 Hrs Diesel 540/1000 PTO 3 Pt Hitch Tires 12 4x42 Front 12 4x54 Rear Power Shift 2 Remotes, 92 HP



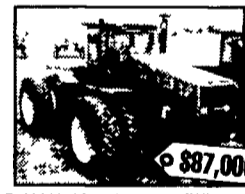
**C 32388 CIH 2594 2wd Cab** 5233 Hrs Diesel 2 Hyd Valves 3 Pt Top Link, 1000 PTO, Tires Fr - 20 8x38 Rear - 20 8x38 Duals



**C 43495 IH 756 9105 Hours** 540/100 PTO 3PT Hitch Rear Weights 2 Remotes 18 4x34 Rear Tires 76 HP

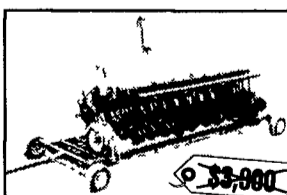


**A 24962 1977 Steiger 325 4WD Cab**, 5 Remotes Cat Engine 6 Cyl 4 Hyd Valves 23 1x34 Front & Rear Duals 325 ENG HP

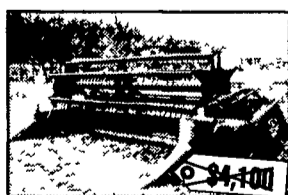


**B 43937 1997 CIH 9390 4WD Cab** 3778 Hours Front & Rear Duals 20 8x42 Manual Transmission 4 Remotes, 425 ENG HP

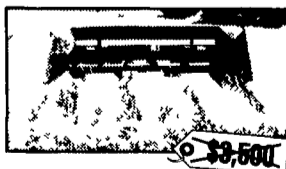
THESE ITEMS WILL BE REDUCED EACH WEEK...  
DON'T MISS OUT ON A CHANCE FOR A GREAT DEAL!



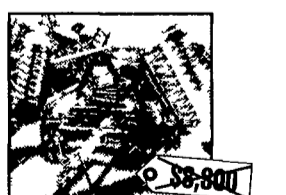
**A 25660 KR 5213-13' Drill** D/D Openers NT Coulters 2x13 Press Wheels



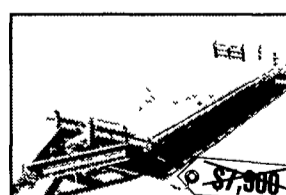
**C 31526 JD 915-15' Platform** New Floor



**C 40055 IH 943-4RN Cornhead** Auger Fair Stalk Roll & Ear Saver Kit



**B 32119 CIH 496-26' Disc** Rockflex Double C Arms Blades Frt 20' Rear 21' Cyl & Hose Scrapers Hydraulic Wings 7.5 Spacing



**B 24733 Donahue 812-28' Flatbed Trailer** Expandable 8 1 2 To 12 1 2 Triple Axle 7000lb Each 12 0x16 5 Tires 21852 lb GVW

~~NOW \$3,700~~  
NOW \$3,500

~~NOW \$3,000~~  
NOW \$2,600

~~NOW \$1,900~~  
NOW \$1,700

NOW \$7,800

~~NOW \$6,300~~  
NOW \$6,000

CASE IH