

Office Closed Christmas Day

On Christmas Day, Thursday, Dec. 25, Lancaster Farming office is closed. The office will reopen Friday, Dec. 26.

For the Dec. 27 issue, there are some deadline changes:

Public Sale and Mailbox ads, 5 p.m., Friday, Dec. 19.

Classified, Section D ads, 5 p.m., Monday, Dec. 22.

Classified, Section C, Farm Equipment ads, 5 p.m., Monday, Dec. 22.

Sect. A ads, 5 p.m., Monday, Dec. 22.

General news — noon, Wednesday, Dec. 24.

(Continued from Page A2)

94 00-98 25 Few Select 1-2 1045-1240 lbs 90 50-91 00

Slaughter Cows Percent Lean, Weight, Bulk, Low Dressing Premium White, 65-70, Over 1600 lbs, 58 50-63 00, 54 00-58 00, High dressing 64 00-66 00 Breakers, 75-80, Over 1400 lbs, 51 00-55 00, 47 50-50 00, High dressing 57 50-60 00 Boners, 80-85, Over 1200 lbs, 44 00-48 75, 39 50-43 00, High dressing 52 00-56 50 Lean (Hi-Yield), 85-88, Over 1200 lbs, 42 50-46 00, 37 50-41 00 Lean, 88-90, Over 1000 lbs, 38 50-42 00, 34 00-37 50 Lean (Light-Wt), 85-90, 750-1000 lbs, 35 50-39 75, 31 50-34 50

Slaughter Bulls Yield Grade 1 1160-1495 lbs 58 00-63 50, high dressing 65 00-66 00, full 51 00-57 00 heavier 1520-2180 lbs 57 00-62 75, high dressing 62 50-67 50, full 54 00 58 50 Few heavy Yield Grade 1 2 2195-2410 lbs 51 50-57 25

Calves Compared to last Thursday, slaughter calves sold mostly steady. Holstein bull calves sold sharply lower on relatively light late week demand. Holstein heifers sold with a higher undertone on a run that was made up of primarily average quality heifers. The PA Department of Agriculture graded 584 head of bulls for the graded sale with an estimated 59 percent of the graded run going into veal barns.

Slaughter Calves Graded Number 3 105-130 lbs 62 00 75 100 lbs 35 00-40 00 Graded Utility 50 110 lbs 30 00-45 00 60 80 lbs 17 00-20 00

Holstein Calves Going Into Special Fed Veal Barns Graded Number 1 Holstein bulls 120 124 lbs 115 00 110 118 lbs 130 00 132 00 94-108 lbs 117 00 127 00 90 92 lbs 85 00 80 88 lbs 106 00-110 00 Graded Number 2 Holstein bulls 102 118 lbs 100 00-111 00 94 100 lbs 90 00, 94 96 lbs 65 00 88 92 lbs 57 00 Holstein heifers 90 105 lbs 400 00 57 00 80 85 lbs 260 00 380 00 Plainer Holstein heifers 90-110 lbs 300 00 400 00 80 85 lbs 200 00 260 00 70 75 lbs 130 00 180 00

Sheep and Lambs Compared to Monday, slaughter lambs sold sharply higher on a light to moderate test supply included several nice packages of lighter weight lambs. Slaughter sheep sold steady to firm with the exception of heavier weight heavier conditioned ewes which sold mostly 10 00 lower. Buyer attendance was moderate with active bidding. All sheep are sold by the pound and reported by actual weight at time of sale.

Slaughter Lambs Choice and Prime 2-3 20 30 lbs few 145 00-230 00 30-40 lbs few fancy 197 00 225 00 40-50 lbs 134 00-145 00, few fancy 170 00 210 00, 50-60 lbs 140 00-164 00, few fancy 170 00 197 00, 60-70 lbs 122 00 145 00 few fancy 152 00-162 00, 70-80 lbs 117 00 120 00 few 138 00-145 00, 80-90 lbs 122 00-135 00, 90 100 lbs 108 00-120 00, 100-125 lbs 99 00-106 00 125-150 lbs few 70 00-87 00 Good 2-3 30-40 lbs few 88 00-100 00, 40-50 lbs 80 00-110 00, 50-60 lbs 110 00 120 00, 60-80 lbs 100 00-110 00

Slaughter Sheep Utility and Good 1-3 Yearlings 70-100 lbs 65 00, 100 150 lbs 71 00 80 00 Sheep 100-150 lbs 40 00 66 00, bulk 60 00-66 00 150 200 lbs 50 00-62 00, long fleeced 38 00-40 00, 200-280 lbs 25 00 35 00 Bucks 100-150 lbs 75 00-82 00 150-200 lbs 58 00 74 00, 200-225 lbs 38 00-44 00

Slaughter Goats Compared to Monday, Kid goats sold mostly steady. Yearlings, mostly steady on a light test. Nannies sold steady. Billies also trended steady, on a very light supply. Wethers were in light supply. The overall quality of the run was above average, with several nice small packages of lighter weight kid and Wether goats. Buyer attendance and bidding activity were light at the start of the sale however, picked up after first half hour. All goats are sold by the head and reported based on estimated weights.

Kids Selection 1 40-60 lbs 60 00-70 00, 60-80 lbs 67 00-86 00 Selection 2 20-40 lbs 38 00-49 00, few pigmies 28 00-30 00, 40-60 lbs 52 00-63 00, 60-80 lbs 60 00-66 00 Selection 3 10-20 lbs 14 00-15 00, 20-40 lbs 26 00-36 00, 40-60 lbs 35 00-50 00

Yearlings Selection 1 60-80 lbs 74 00-82 00, 80-100 lbs 83 00-98 00 Selection 2 60-80 lbs 60 00-71 00

Nannies Selection 1 70-100 lbs 77 00-87 00, 100-150 lbs 90 00-91 00 Selection 2 50-70 lbs 46 00-60 00, pigmies 40 00-48 00, 70-100 lbs 50 00-63 00, 100-150 lbs 70 00-85 00

Billies Selection 1 150 250 lbs 139 00-152 00, individual 175 00 Selection 2 70-80 lb 78 00-80 00, few pigmies 61 00-72 00, 150-250 lbs 124 00-133 00

Wethers 50-70 lbs few 59 00-73 00, individual 78 00, 70-100 lbs 67 00-78 00, few individuals 90 00-98 00, 100-200 lbs 106 00

Lancaster County Weekly Cattle

New Holland, Pa.
Report Supplied By USDA
Friday, Dec. 12, 2003

THIS WEEK	CATTLE	CALVES
1815 WEEK	2471	1722
LAST WEEK	2677	1977
LAST YEAR	3227	1998

This week in Lancaster County slaughter steers sold steady to 1 00 lower early in the week, with late week sales a full 2 00-3 50 lower. The qualities of the steer runs in the county have been lower over the past couple of weeks. A lot of the cattle are carrying some fill as well, which has them trading for around 5 00 lower than the bulk of the cattle. Supplies are tight, as the excellent finished market over the past several months has pretty much brought anything close to being finished away from the bunk and through the sale ring. The western direct feeders moved their live cattle from 3 00-5 00 lower from 96 00-98 00 Dressed sales in Nebraska were from 5 00-7 00 lower at 155 00. The Merc responded to the lower finished trade with near limit-down losses for a few days this week which left the current spot December live cattle contract at 93.57 at Thursday's close. However, what has caught most analysts and feeders eyes is the August contract, which is currently at 73.75. Its hard to tell where the current market is heading, the only factor that is certain right now is that prices remain very good, even though most people have become accustomed to the auctioneer using that magic 100 00 number to sell their cattle, that same auctioneer was selling Choice cattle in the 71 00-75 00 range this time last year. Slaughter Holstein steers sold steady early in the week, with Thursday sales 1 00-2 50 lower. Slaughter heifers sold steady to weak early, with end of the week prices 2 00-2 50 lower. Slaughter cows sold weak to 3 00 lower for the week, with slaughter bulls trending mostly steady. The cattle supply this week in Lancaster County included 610 slaughter steers, 107 slaughter heifers, 1186 slaughter cows, 185 slaughter bulls, and 383 head of feeder cattle.

Note: The Vintage Sales Stables will be holding a special feeder cattle sale on Monday December the 15th set to begin right after the fat cattle sale.

Slaughter Steers High Choice and Prime 2-4 1165-1505 lbs 103 00-109 00 from 106 00 112 00 early in the week, couple YG 4-5 1255 lbs 97 25 Choice 2-3 1145 1480 lbs 99 00-102 50, from 102 00 106 50 early in the week, several full 95 25-97 75 YG 3-4 1130-1445 lbs 94 00 95 50 Higher yielding Choice 1-2 Charolais-crosses 1125-1480 lbs 99 50-104 00 majority 101 00-102 00 High Select and low Choice 2 3 1110 1490 lbs 95 00-98 50 from 99 00 104 00 early in the week full 91 00-95 00 few Charolais crosses 98 00 101 00 low heavy 1535 1585 lbs 89 50-90 50 Select 1 2 1075-1470 lbs 89 50 94 25 mostly 91 00 93 00 up to 98 25 early in the week Standard 1 2 1125 1465 lbs 79 00 88 50 mostly 83 00-86 00 blacks returning to feed 1065 1225 lbs 84 50-90 50

Holstein Steers Few Choice 2 3 1250 1585 lbs 90 00-94 00 High Select and low Choice 2 3 1275-1515 lbs 84 00 89 00 mostly 84 50 86 00 Select 1 2 1295 1600 lbs 76 00 83 75 up to 85 50 early in the week Standard 1 2 1190 1450 lbs 69 00-74 50

Slaughter Heifers High Choice and Prime 2 4 1310-1480 lbs 103 00 104 00 Choice 2 4 1200 1425 lbs 99 50-102 50 up to 104 00 early in the week, full 1060-1445 lbs 94 00 99 50 Few Select 1-2 1045-1240 lbs 90 50-91 00

Slaughter Cows Percent Lean Weight Bulk Low Dressing Premium White 65-70, Over 1600 lbs, 57 00-63 00, 54 00 58 00, High dressing 64 00-66 00 Breakers, 75-80, Over 1400 lbs, 51 00-55 75 47 50-50 00, High dressing 57 50 60 00 Boners, 80-85, Over 1200 lbs, 44 00-48 75, 39 50-44 00, High dressing 48 00-56 50 Lean (Hi-Yield), 85-88, Over 1200 lbs, 42 50-46 00, 37 50-41 00 Lean, 88-90, Over 1000 lbs, 38 50-43 00, 34 00-39 00 Lean (Light-Wt), 85-90, 750-1000 lbs, 35 50-39 75, 31 50-34 50

Slaughter Bulls Yield Grade 1 1130-1495 lbs 58 00-63 50, high dressing 65 00-66 00, full 51 00-57 00 heavier 1520-2180 lbs 57 00-62 75, high dressing 62 50-67 50, full 54 00-58 50 Few heavy Yield Grade 1-2 2195-2410 lbs 51 50-57 25

Calf Summary This Week in Lancaster County, slaughter calves sold steady to weak. There is some noticeable resistance from slaughter buyers, as only a short time ago they were willing to give up to 85 00 or 90 00 for slaughter calves. Now, many of the kill calves are at the 60 00 level or lower. Holstein bull calves sold 10 00-15 00 higher on Monday. However, prices in the Tuesday and Thursday graded runs were sharply lower for the most part. Northeast special-fed hide off veal carcasses were reported from 165 00-205 00 by the USDA on Thursday. The weighted average is at 193.98, which continues to trend lower. Most local producers are receiving below 200 00 dressed calves for the first time in several months. Holstein heifer calves sold with a steady to firmer undertone throughout the week. The PA Department of Agriculture graded 1313 head of bulls and heifers at the two graded sales this week, with around 1115 head going through the graded sales this time last year.

Slaughter Calves Graded Number 3 105-130 lbs 62 00, 75-100 lbs 35 00-40 00 Graded Utility 80-110 lbs 30 00-45 00, 60-80 lbs 17 00-20 00

Holstein Calves Going Into Special-fed Veal Barns

Monday- Holstein Bulls 90-125 lbs 132 00-157 00, 80-90 lbs 115 00-130 00 Plainer-type Holstein Bulls 90-125 lbs 100 00-130 00,

80-90 lbs 60 00-80 00 Weaker Holstein Bulls 90 125 lbs 52 00-75 00 Holstein Heifers 85-110 lbs 330 00 450 00 Plainer-type Holstein Heifers 150 00-210 00

Tuesday- Graded Number 1 Holstein bulls 122 lbs 140 00 102 113 lbs 145 00 152 00 95 lbs 140 00, 80 90 lbs 110 00-117 00 few head 70 lbs 37 00 Graded Number 2 Holstein bulls 118 lbs 115 00 102 112 lbs 150 00 160 00 95 lbs 105 00 115 00 83-90 lbs 87 00 92 00, 65 72 lbs 30 00-42 00 Graded Number 3 Holstein bulls 96-113 lbs 67 00 70 00 80 lbs 52 00 Graded Number 1 Holstein heifers 83 112 lbs 430 00-470 00, 73 lbs 210 00 Graded Number 2 Holstein heifers 92-104 lbs 385 00-430 00, 81 lbs 310 00, 73 lbs 140 00, 63 lbs 120 00 Few Beef-type calves 75-130 lbs 130 00-175 00

Thursday- Graded Number 1 Holstein bulls 120-124 lbs 115 00, 110-118 lbs 130 00-132 00, 94-108 lbs 117 00-127 00, 90-92 lbs 85 00, 80-88 lbs 106 00-110 00 Graded Number 2 Holstein bulls 102-118 lbs 100 00-111 00, 94-100 lbs 90 00, 94-96 lbs 65 00, 88-92 lbs 57 00 Holstein heifers 90-105 lbs 400 00-530 00, 80-85 lbs 260 00-380 00 Plainer Holstein heifers 90-110 lbs 300 00-400 00, 80-85 lbs 200 00-260 00, 70-75 lbs 130 00-180 00

Pennsylvania Livestock Auction

Waynesburg, Pa.
Thursday, Dec. 11, 2003
Report Supplied By Auction

CATTLE STOCK COWS 50.00-56.50 SLAUGHTER COWS Utility & Commercial 50.00-57.00, Boner & Boning Utility 40.00-49.00, Cutter & Boning Utility 35.00-39.50, Canner & Low Cutter 30.00-34.50, Shells 30.00 & down

BULLS YIELD GRADE 1 1500#-2000# 47.00-59.00, YIELD GRADE 2 1000#-1400# 38.00-61.00

FEEDER STEERS M & L 1 300-500# 80.00-111.00 250-280# 80.00-109.00, M 600-900# 70.00-104.00

HIFTERS M & L 1 300-500# 78.00-88.00, 1 1400-650# 60.00-90.00

BULLS M & L 1 300-620# 70.00-105.00

CALVES Veal Prime 70.00-85.00, Choice 60.00-84.00, Good 35.00-70.00, Farm Calves #1 Holstein Bulls 90-120# Few 35.00-95.00, #2 Holstein Bulls 80-100# Few 10.00-50.00, Beef - Bull & Hfrs/Hd 35.00 90.00

HOGS Barrows & Gilts #1-2 210 255# 40.00 48.00, #2-3 255-280# 35.00-48.00, Sows #1 3 300 500# 22.00-42.00 Feeder Pigs 1-3 15-20# 5.00-22.00/Hd 1 3 25-35# 10.00-23.00/Hd

LAMBS High Choice 80 100# 80.00-108.00 Choice 40 75# 85.00-123.00, Feeder Lambs Good 65 00 97 00 Sheep 35 00-52 00 Fat Sheep 35 00 and down

GOATS Large 45 00 100 00/Hd Medium 30 00-71 00/Hd Small 10 00-30 00/Hd HORSES Horses 19 00-47 00, Ponies 20 00-42 00

Greencastle Livestock

Greencastle, Pa.
Report Supplied by PDA
Thursday, Dec. 11, 2003

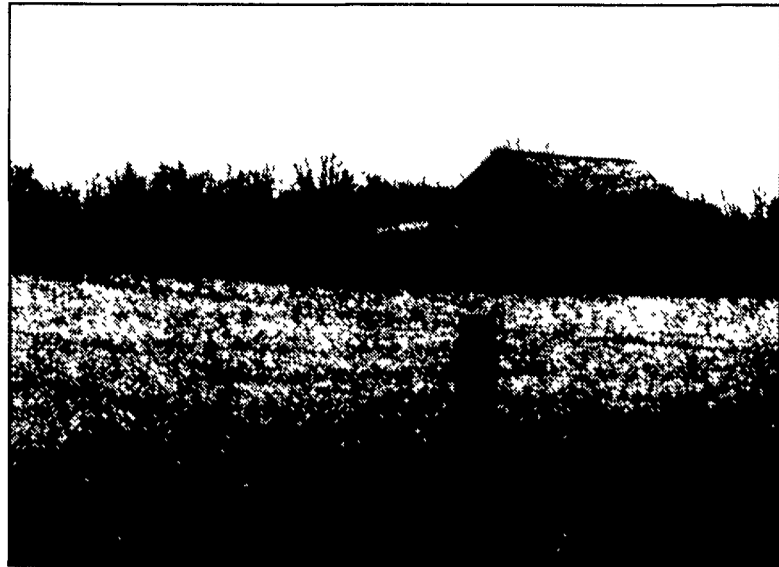
CATTLE 211 COWS 100 2 00 LOWER STEERS F W SELECT 1 2 72 50-77 00 COUPLI STANDARD 1 2 60 75 & 70 00 HOLSTEIN STEERS FEW CHOICE 2-3 1065/1140 LBS 70 50 77 50 11 W SELECT 1 2 63 75 69 50 F W STANDARD 1 2 51 00-62 00 HEIFERS F W STANDARD 1-2 51 00 60 00

COWS BREAKERS 75-80% FEAN 48 75-54 75, ONE AT 56 75 LOW DRESSING DOWN TO 45 75, AVERAGE 51 15 BONERS 80-85% FEAN 41 00-49 50 FEW UP TO 51 00, AVERAGE 45 65 FEAN 85 90% FEAN 36 00-47 50, MOSTLY 38 00-46 00, AVERAGE 40 75 SHEELS 35 50 AND DOWN

BULLS COUPLI YIELD GRADE 2 930 & 1870 LBS 41 50 & 57 25 FEEDER CATTLE HEIFERS FEW M-1 270/305 LBS 80 00-90 00, ONE 530 LBS 82 00, FEW M & L-2 330/400 LBS 60 00-65 00, FEW L-3 535/540 LBS 59 00-67 50, ONE 1040 LBS AT 47 50 BULLS M-1 285/480 LBS 83 00-100 00, M & L-2, 385/590 LBS 72 00-76 00, ONE 525 LBS AT 81 00, L-3 200/380 LBS 52 00-67 00, ONE 520 LBS AT 50 00

CALVES 282 STANDARD & GOOD 70/120 LBS 40 00-70 00 UTILITY 50/115 LBS 10 00-37 50 FARM CALVES HOLSTEIN BULLS STEADY TO 1 00 HIGHER NO 1 BULLS 90/125 LBS 110 00 157 50, MOSTLY 125 00-150 00 NO 2 BULLS 90/125 LBS 70 00-115 00 HOLSTEIN HEIFERS FFW NO 1 HEIFERS 100/125 LBS 310 00-400 00 NO 2 70/130 LBS 200 00-300 00 FEW BEEF CROSS BULLS AND HEIFERS 80/95 LBS 70 00-175 00

HOGS NO MARKET TEST, FEEDER PIGS NO MARKET TEST SHEEP NO MARKET TEST GOATS 1 NANNIES ONE 90 LBS AT 50 00



Winter arrived early late last week, blanketing this farm on Black Swamp Road, Elizabethtown with more than seven inches of snow before Christmas. Snowfall totals ranged from 6-12 inches in Lancaster County. Look for our special Christmas issue with features and farm highlights next week. Photo by Charlene M. Shupp Espenshade

Jersey Shore Livestock Market, Inc.

Jersey Shore, Pa.
Report Supplied By Auction
Thursday, Dec. 11, 2003

RETURN TO FARM CALF 100-497 GOOD VEAL 40 00-67 00 COMMON VEAL 20 00-38 00 CHOICE STEERS 92 00-96 00 SFI ECT STEERS 80 00-91 00 COMMON STEERS 50 00-79 00 COMMERCIAL COWS 45 00-57 00 CANNERS/CUTTERS 37 00-47 00 SHELLS 25 00-36 00 CHOICE HEIFERS 90 00-94 00 SEI FCT HEIFERS 70 00-89 00 COMMON HEIFERS 45 00-69 00 GOOD FEEDERS 70 00-90 00 COMMON FEEDERS 45 00-69 00 BULLS 45 00-58 00

Greencastle Hay

Greencastle, Pa.
Report Supplied By Auction
Thursday, December 11, 2003

HAY 13 loads, STRAW 2 loads TOTAL 15 loads

AI FALFA 120 00 MIN HAY 25 00 140 00 1 20/BALF STRAW 115 00-125 00

Four States Livestock Monday Sale

Hagerstown, Md.
Report Supplied By Auction
December 8, 2003

SLAUGHTER COWS 50 HEAD QUALITY LOWER THAN LAST MONDAY PRICES 2 00 LOWER BREAKERS 48 00-55 00 BONERS 46 00-51 00, FEAN 39 00-45 00, THIN AND LIGHT 39 00 DOWN BULLS YG+N2 1420 LBS AT 49 50 FED STEERS NO HIGH CHOICE OR PRIME CHOICE 2-3 1150-1300 LBS 98 00-100 00, 1300-1550 LBS 99 00 102 50, 1600-1775 LBS 75 00-87 50 FFD HEIFERS HIGH CHOICE 2-4 1200-1300 LBS 104 00-105 00, 1100-1200 LBS 98 00 99 50, OLDFR HOLSTEINS 1400-1600 LBS 57 00-67 50

CALVES 131 HEAD, GOOD SLAUGHTER 90-120 LBS 65 00-72 00, 70-90 LBS 50 00-65 00, HOLSTEIN BULLS RETURNING TO FARM, STEADY PRICES +N1 92-120 LBS 135 00-160 00, +N2 90-120 LBS 100 00-135 00, YOUNG 75 00-95 00, HOLSTEIN HEIFERS +N1 100-115 LBS TO 410 00, BEEF X BULLS AND HEIFERS 80-90 LBS TO 167 00

BUTCHER HOGS NONE STOCK CATTLE STEERS, 1 475 LBS AT 92 00, 1 650 LBS AT 85 00 HEIFERS 1 650 LBS AT 74 00 BULLS 2 HOLSTEINS 1050-1125 LBS 48 00-52 00 SHEEP NONE

GOATS LARGE WETHER AT 75 00, MED BILLY AT 67 50, FLESHY KIDS AT 61 00

Four States Livestock Wednesday Sale

Hagerstown, Md.
Report Supplied By Auction
December 10, 2003

SLAUGHTER COWS: 146 HEAD, 3 00-5 00 LOWER BREAKERS 48 00-53 50, HIGH DRESSING 55 00-57 00, BONERS 44 00-49 00, FEW TO 51 50, LEAN 39 00-44 00, THIN AND LIGHT 38 00 DOWN

BULLS 7 HEAD YG+N1 57 00-60 00, YG+N2 52 00-57 00

FFD STEERS 19 HEAD HIGH CHOICE TO PRIME 1200-1400 LBS 100 00-108 00, 1500-1600 LBS 96 00-99 00, HIGH CHOICE 1100-1400 LBS 95 00-99 50, LOW CHOICE 88 00-94 00

FFD HEIFERS 21 HEAD HIGH CHOICE TO PRIME 1100 1300 LBS 99 00-105 00 CHOICE 2 3 1050 1200 LBS 89 00-95 00 RETURNED TO FEED 68 00 80 00

CALVES 140 HEAD LOW CHOICE 326 LBS AT 78 00 GOOD 80-110 LBS 25 00-50 00, 60-80 LBS 25 00 35 00 HOLSTEIN BULLS RETURNING TO FARM +N1 95-110 LBS 120 00-135 00, FEW TO 142 00, 90 94 LBS 80 00 100 00, +N2 95 110 LBS 90 00 115 00, YOUNGER CALVES 60 00-85 00 HOLSTEIN HEIFERS +N1 TO 420 00, BEEF BULLS TO 147 00

BUTCHER HOGS 27 HEAD +N1 AND 2 240 300 LBS 38 00 44 00, 300 350 LBS 33 00 40 00 400 LBS TO 36 00

SOWS 29 HEAD 300 450 LBS 30 00 35 00 450 600 LBS 27 00-31 00

STOCK CATTLE 155 HEAD HEIFERS 3 00-8 00 HIGHER STEERS MED AND LARGE FRAME 300 500 LBS 89 00 103 00, 500-700 LBS 85 00-95 00, 700-800 LBS TO 86 00, 800-1000 LBS 68 00-77 00