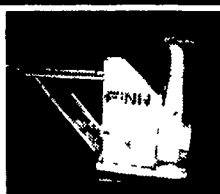




"Providing Affordable Quality Work Solutions"

 Hydraulic Brush Mower	 Grapple Rake	 Broom	 Quick Attached Plate
 Land Leveler	 Hydraulic Snow Blower	 Snow Plow	 Bale Forks
 Grapple Bucket	 Tine Grapple Bucket	 Rod Bucket	 Rod Grapple
 Snow Bucket	 Low Profile Bucket	 Landscape Rake	Valley Rental & Sales Inc. 1624 Rt 212 Quakerstown, PA 18951 610/346-6290 Other Items Available



1998 Finn B40 Straw Blower, 20HP Kohler w/Electric Clutch, Runs and Operates A-OK, Really Nice Machine, \$4,500



1998 SL20 UPRIGHT Scissors Lift 20 Lift equipped with Slide Out Extension and Non Marking Tires, overall Width 33", Good Condition, \$2,500



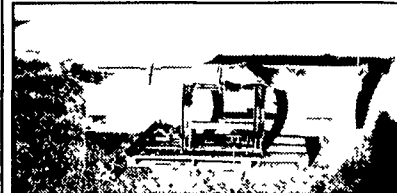
Mustang 960, 65hp Diesel Engine, 66" GP Bucket, 1700# Lifting Capacity, Tires are 50% Runs and Operates \$8,650



IMT Mod# 3619, Nuckle Boom Crane, MFG date 3-1-89, max extension 1st stick 28' 4" 2nd stick 33' 2" can see it work and operate \$3,200



Smith 100 CFM Gas Air Compressor, Runs and Makes Air \$1,995



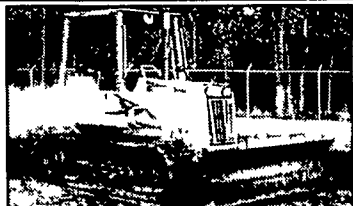
10' Meyer Power Angle Snow Plow w/New Hitch and Hydraulic Pump \$2,250

814-658-3066



MIKE ZYNDORF LLC

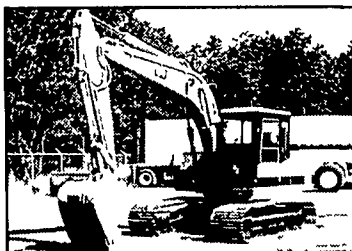
609/625-8660
 609/641-3342 (Evenings)
 FAX 609/625-8664
 6481 Harding Hwy (Rt. 40) Mays Landing, NJ 08330
 Visit us at www.mzequipment.com for our complete inventory



1998 Komatsu D31P-20, LPG 6 Way Blade OROPS Low Hrs \$35,500



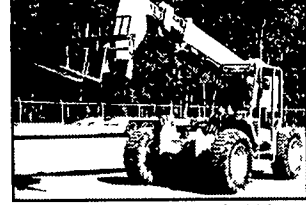
90 Cat E110B, cab 20 in pads 36 bucket, aux hyd \$25,500



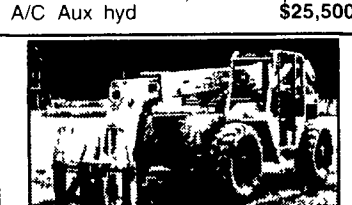
90 Cat E120B Exc., 28" steel pads A/C Aux hyd \$25,500



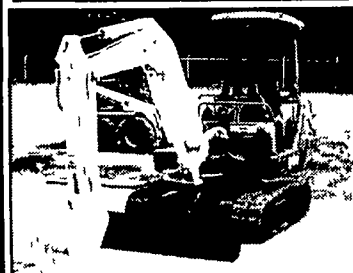
99 Komatsu WB140-2, Cab 4x4 Aux Hyd Ext-A hoe Exc Cond \$33,900



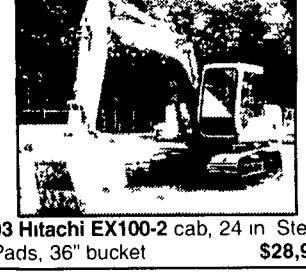
96 JCB 506B, telescopic forklift 6000lb cap, 4x4 36' reach \$28,900



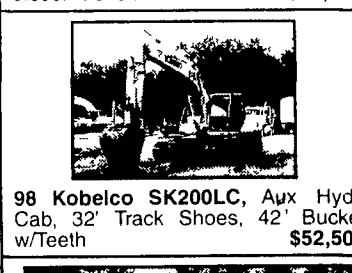
97 Lull 6K-37 - telescopic lift JD diesel VG Cond \$29,500



94 & 96 Cat 307SSR, Choice of 2 Rubber Tracks Blade & Articulated Boom \$24,900



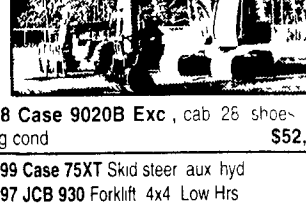
93 Hitachi EX100-2 cab, 24 in Steel Pads, 36" bucket \$28,900



98 Kobelco SK200LC, Aux Hyd Cab, 32' Track Shoes, 42' Bucket w/Teeth \$52,500



98 Kobelco SK300LC, V/G cond Low hrs \$69,900



98 Case 9020B Exc, cab 26 shoes A/C vg cond \$52,500



98 Volvo L70C 20 5x25 tires cab A/C JRB coupler system \$45,500

(2) B50-2 93 & 94 equipped w/rubber tracks blade canopy \$15,500
 B27-2 R tracks blade & cab offset boom \$16,900
 B37-2 R tracks blade & canopy \$12,900

'99 Case 75XT Skid steer aux hyd \$15,900
 '97 JCB 930 Forklift 4x4 Low Hrs Call For Price
 '88 GMC Brigadier water truck, 2300 gal Smith tank 5 spray heads \$21,900
 94 Simon Manlift MP60, 60 reach 4x4 diesel \$13,900
 99 IHC 4700, dump truck p/s a/c cruise \$22,900
 (2)1997 Speciality Light Plants model BT K6 4MH Kubota diesel 4 1000 watt bulbs \$2,950 - \$3,250
 (1)1994 Amida Light Plant model SL4060D 4MH Kubota diesel 4 1000 watt bulbs \$2,500
 '96 Manitou Rough Terrain Straight Mast 4x4 5000 lb capacity 21 3 stage mast Ford diesel power \$16,900
 98 Ford F700 dump truck diesel no CDL needed \$21,500
 Ditch Witch 255SX Trencher cable plow gas powered 300 hours \$7,900

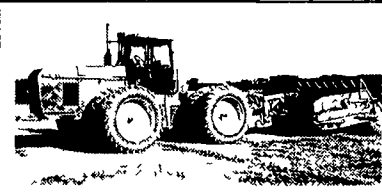


New rubber tracks available for most excavators Delivery

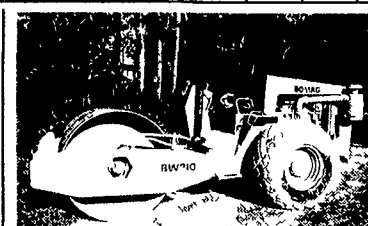


South Jersey New Full Line Eager Beaver Dealer

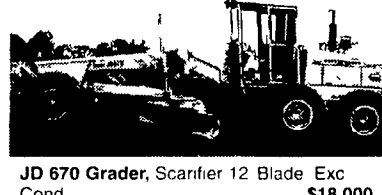
Financing



JD 8870, PS Duals 350 HP with 99 Reynolds 17 Yd Pan \$70,000



Bomag BW210 84 Vibratory Roller \$16,000



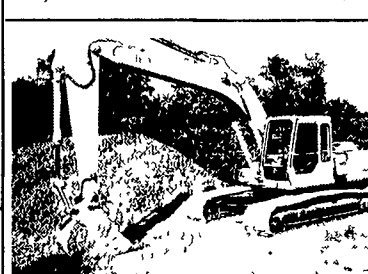
JD 670 Grader, Scarifier 12 Blade Exc Cond \$18,000



99 Vermeer Mdl V-3550A, Trencher, 4x4 Diesel Backfill Blade Only 575 Hrs \$11,500



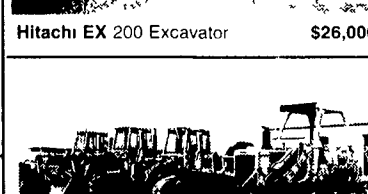
94 Gradall 544 Forklift, 10 000 lb Capacity 48 Reach w/Forks Bucket Truss Boom \$33,000



Hitachi EX 200 Excavator \$26,000



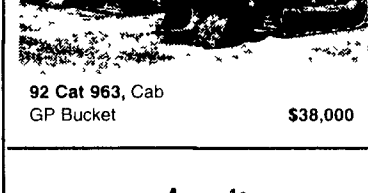
88 Kenworth T600 \$10,000



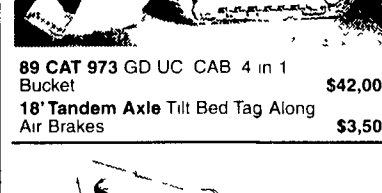
92 Cat 963, Cab GP Bucket \$38,000



89 CAT 973 GD UC CAB 4 in 1 Bucket 18' Tandem Axle Tilt Bed Tag Along Air Brakes \$42,000 \$3,500



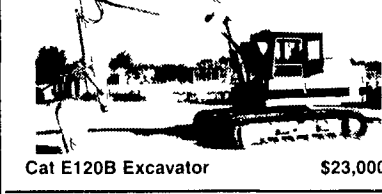
86 Cat D5H, Good Undercarriage Tight Blade \$39,000



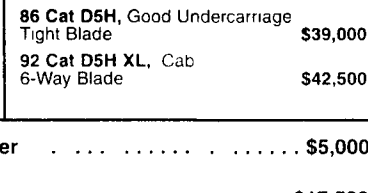
Cat E120B Excavator \$23,000



92 Cat D5H XL, Cab 6-Way Blade \$42,500



73 Mack U600, Dump Bed Good Rubber \$5,000



JD 450E Dozer, 6-Way \$17,500

PAVING EQUIPMENT

Hyster 350C Roller. \$5,000

Stone Wolfpack 2500 double drum asphalt roller \$2,500



Weaver's Equipment Sales

RD#1, Box 418, Milton, Pa. 17847
 Phone: 570/523-9598