

15 CONSTRUCTION EQUIPMENT



WENGER'S OF MYERSTOWN

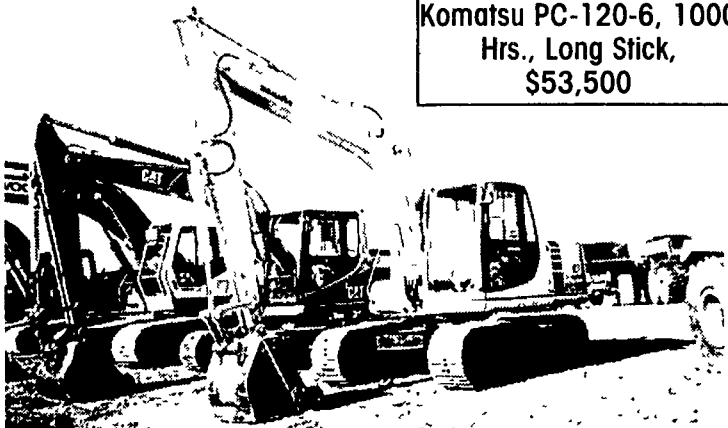
CONSTRUCTION EQUIPMENT & PARTS

800-552-5080 • Nights 717-272-9583
Rt. 501 South Myerstown, PA 17067

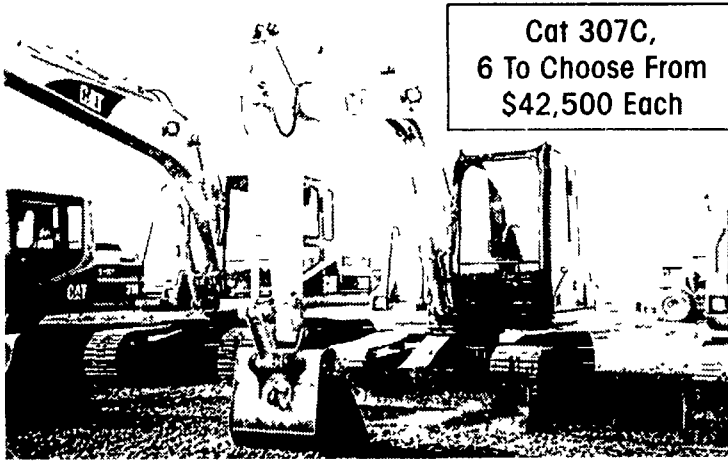
HOOURS: Mon-Fri • 7:30-5:00 Saturday • 7:30-Noon

www.wengers.com

kbaum@wengers.com



Komatsu PC-120-6, 1000 Hrs., Long Stick, \$53,500



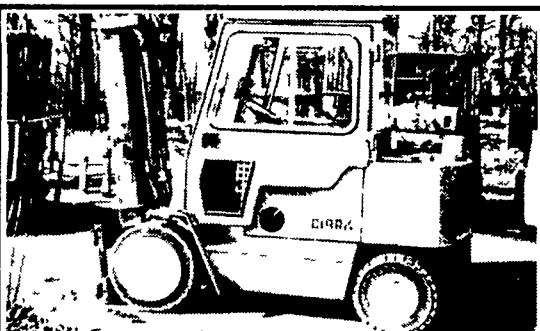
Cat 307C, 6 To Choose From \$42,500 Each



1993 IR air compressor, 250CFM JD diesel, good condition, kept inside, \$5,150 717/367-4830



621 B Liebherr Loader Serial #2781356, Good Condition Looking for \$30,000 or Reasonable Offer PA. 717-733-7072 Evening



Clark 6000 lb. Pneumatic, L P, power steering, side shift, fresh paint, exc condition \$6,400 C. Betz Fork Lift Sales 717-485-0410

LIFT-LINK

1-877-570-4751



Caterpillar Forklift, 8,000# Capacity, LP Gas, Auto Transmission, Pneumatic Tires, Three Stage Mast, Sideshifter, Runs Great, \$5,900 SALES SERVICE RENTALS LEASING

- #9160 Case 590SL Loader Backhoe, 2000, 4WD, Cab, Ex, 2170 Hrs \$44,500
- #9191 Case 40XT Unloader, 2002, Aux Hyd, Dirt Bkt, 425 Hrs \$14,900
- #9130 Case 580 SK Loader Backhoe, 2WD, 1992, Canopy Std, 3090 Hrs \$18,900
- #9110 Case 1840 Uni Loader, 1995, Aux Hyd, Dirt Bkt 2975 Hrs \$9,500
- #9076 Gehl 5625, 1995 Aux Hyd Dirt Bkt, 4207 Hrs \$6,100
- #9045 Case 1845C Unloader, 1999, Aux Hyd, Util Bkt, 6449 Hrs \$12,900
- #9044 Case 1845C Unloader, 1999, Aux Hyd, Util Bkt, 6366 Hrs \$12,900
- #9043 Case 1845C Unloader, 1999, Aux Hyd, Util Bkt, 6361 Hrs \$12,900
- #9041 Case 1845C Unloader 1999, Aux Hyd, Util Bkt 7565 Hrs \$12,900
- #8825 John Deere 310A Loader Backhoe 1977 2WD, Std Hoe Partial Cab \$8,900

Vernon E. Stup Co.

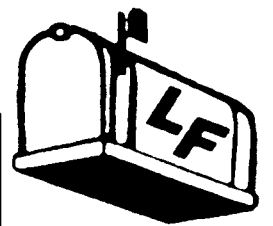
5859 Urbana Pike, Frederick, MD 21701

301/663-3185

We Now Accept Visa **Master Card** **& Discover**

CLASSIFIED AD ORDER BLANK

PLEASE WRITE CLEARLY



MAIL TO:
LANCASTER FARMING
P.O. BOX 609, Ephrata, PA 17522

FAX
717-733-6058

CALL 717-626-1164 TO ADVERTISE YOUR LINE AD OR DISPLAY BOX AD IN OUR PAPER

NOTE Please do not use this form for Mail Box Market Ads, see instructions with Mailbox Markets.

Name _____
Address _____
City _____ State _____
Zip _____ Phone (____) _____
Please publish my ad _____ times
starting with the _____ issue Classify under
_____ I enclose _____

Check Enclosed
 Visa (13 or 16 numbers)
 Mastercard (16 numbers)(Be sure to include all numbers)
 Discover
Card # _____ - _____ - _____ - _____
Exp. Date: _____ Signature _____
Box Replies: Ads with answers coming to a box number, c/o Lancaster Farming: \$1 50 per ad per week additional.
This newspaper will not be responsible for more than one incorrect insertion of any advertisement.

- Lancaster Farming
1 E Main St
Ephrata Pa 17522
717-626-1164 • 717-394-3047
717 733 6397
FAX 717-733-6058
- PHONE HOURS**
Mon Tues Wed & Fri
8 a m to 5 p m
Thurs 7 a m to 5 p m
- OFFICE HOURS**
Mon thru Fri 8 a m to 5 p m
- The following categories are available for your classified advertising in Section C Deadline Thursday morning at 9 00 of each week's publication
- 2015 Construction Equipment
 - 2010 Farm Equipment
 - 2020 Farm Equip Wanted
- The following categories are available for your classified advertising in Section D Deadline Wednesday afternoon at 4 00 p m of each week's publication
- 2030 Silos & Unloaders
 - 2040 Buildings and Supplies
 - 2050 Grain Equipment
 - 2060 Dairy Equipment
 - 2070 Livestock Equipment
 - 2080 Cattle
 - 2095 Exotic Animals
 - 2090 Horses & Mules
 - 2100 Sheep & Goats
 - 2110 Swine
 - 2120 Artificial Breeding
 - 2140 H & Equip. & Supplies
 - 2140 Poultry & Supplies
 - 2145 Rattles
 - 2150 Feed & Seed
 - 2160 Fertilizer
 - 2170 Plants
 - 2180 Food Products
 - 2190 Nursery
 - 2200 Lawn & Garden
 - 2210 Miscellaneous Services
 - 2220 Custom Work
 - 2230 General Help
 - 2240 Situations Wanted
 - 2250 Business Opportunities
 - 2260 Household Goods
 - 2270 Pets
 - 2280 Lost & Found
 - 2300 Computers
 - 2310 Legal Notices
 - 2320 Miscellaneous For Sale
 - 2325 Antiques & Collectibles
 - 2330 Recreational Vehicles
 - 2340 Cars For Sale
 - 2350 Trucks Trailers & Buses
 - 2360 Real Estate

MINIMUM 3 LINES 1 TIME COST \$6.54		DEADLINES: SECTION D - WEDNESDAY AT 4:00 P.M. SECTION C - THURSDAY AT 9:00 A.M. OF EACH WEEK'S PUBLICATION		LOWEST RATE
4 Lines	8 78	2 TIMES 3 LINES COST \$13.08	3 TIMES 3 LINES COST \$18.36	
5 Lines	11 02	17.56	24.66	Add't Line @ 4.48 Add't Line @ 6.30
6 Lines	13.26	22.04	30.96	
7 Lines	15 50	26.52	37.26	
8 Lines	17 74	31.00	43 56	
9 Lines	19 98	35 48	49 86	
10 Lines	22 20	39.96	56.16	
Add't Per Line 2 24 Each		44 40	62.46	