

**DON'T LOOK ANY FURTHER!**

**YOU'LL FIND IT IN LANCASTER FARMING'S CLASSIFIEDS**

**Manuals**  
Parts/Service/Operators  
Caterpillar, Case, International, Fiat, Komatsu—too many to list Call Heavy Equipment Loader Parts, 717-469-0039, fax request 717-469-7679, email helpinc@comcast.net

1983 D6D LGP, 90% U/C, 125 hrs, rebuilt trans & torque, new steering clutches, tight-straight blade-tilt, \$38,500 obo 603 655 2281

27 Church pews, 16' red cushion seats, oak verneer backs white ends, make offer, 7 hvy wd floor/roof trusses, 2'Hx28'3"Lx 3-1/2"W, \$150/ea 6 same 24'7-1/2"L \$100/ea (717)933-8703

AC 5000# gas eng forklift, 15" air tires, 144" lift Call anytime (856)358-8762

JD 450B dozer, good U/C, 6-way blade, ROPS, \$12,500 obo Cat 955L ldr, good U/C, ROPS, runs good, \$17,500 obo '77 Mack single axle dump tk w/10' dump, pintle hitch, air brakes, \$5,900 obo 570-924-3116

WESTERN ALFALFA for sale, 3x4 sq dairy quality Delivery avail Bernard Wrede, (800)786-9794 mobile (402)649-0661, email wrede@ptcnet.net

4-Rent 25' scissor lift (717)786-0256

Onan Tex Star 70 Gen Dsl, single & 3 phase, 70kw, exc cond \$7,200 (856)769-0787

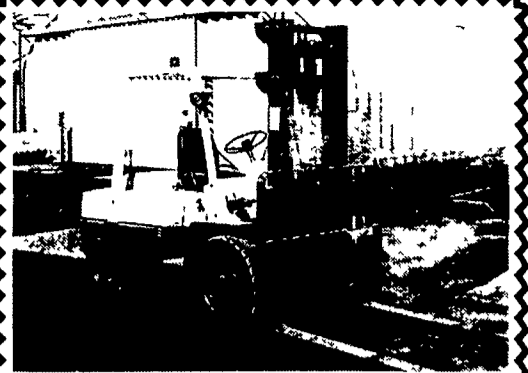
Chain Hoist, Coffing EC Series, 1/2 ton w/ Coffing 1 ton power trolley & Saturn Engineering 2 ton power bridge trolley, Chain container, electric cables, control box, used very little, 3 phase, Buy buzz box for use w/ single phase Complete set-up \$1500 OBO(610)838 0638

Concrete Sealer, new generation 40HP Clear 2 part Epoxy Concrete Sealer 4 pails @ 4 gal ea 350-500 sq ft coverage per gal \$150 OBO (610)838-0638

20,000 lb Winch, Tulsa PTO Powered, very heavy also 2nd Winch not quite as big also PTQ \$150/ea OBO (610) 838-0638

1990 Cat 953 crawler loader, 6851 hrs, fair cond, \$45,000 1990 JD 410C backhoe, 4355 hrs, fair cond, \$14,000 Mark-lift scissor lift, 20', \$1000 Condor chick lift, 20' \$1000 Call Larry @ Johnston Construction Co Dover, PA (717)292-3606

AC 640 Articulated Wh Ldr, VG cond, \$6,500 (610)932-5576



1980 Datsun 8,000 Lb., Great Shape, \$7,650  
**717/367-4830**

**BUYING & SELLING USED CONSTRUCTION EQUIPMENT, NEW & USED PARTS & ATTACHMENTS CALL**

**H.E.L.P., INC.**  
**(717) 469-0039**  
**FAX (717) 469-7679**

Specializing In Caterpillar Parts also available for Case, Fiat, IHC, Komatsu, Deere, Etc.

**ALL PARTS AT DISCOUNT PRICES! \*\*PARTS LOCATING SERVICES\*\***

Call Us For Your Parts & Service Manual Needs

**HEAVY EQUIPMENT LOADER PARTS, INC.**

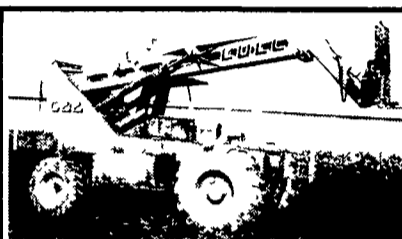
10070 Allentown Blvd., Grantville, PA 17028

**15 CONSTRUCTION EQUIPMENT**

'99 Mauldin Paver 690, 38HP diesel 8'-13' poly pads \$17,500 obo (215)491 1379

(2) Dresser 175C crawler loaders, 1983-85 approx, SS# 3231, \$17,500 1972 SS# 1215, \$13,900 Both have rebilt trans & partial eng rebilt in last 5 years Buy 1 or pkg deal! Call (610)395 6857 ext 26

Case 580G diesel wheel loader backhoe cab, runs and drives, needs some work, \$6000 OBO Heavy Equipment Loader Parts, RT 22, Grantville, PA (717) 469-0039 help10070.com



622 Lull Lift, 6000 lb, 32' Lift, 4 Cyl. diesel, Good Condition

**Groffdale Concrete Walls**  
430 Concrete Ave.  
Leola, PA 17540  
717-656-2016

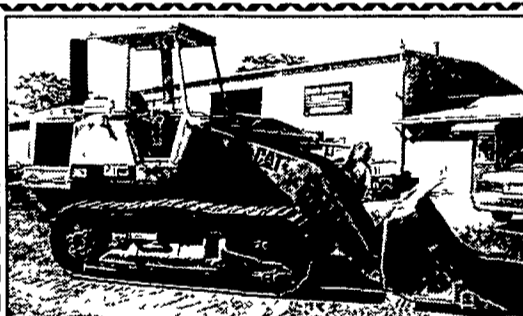
**SAVE\$\$\$**

Dismantling & selling bakery feed building & equip in DELMARVA

60,000 sq. ft. Steel buildings 80'x100'x16' & 140'x400x20' (6) 48' & 53' van trailers, (2) knight mixers, (2) overhead cranes, (3) fork lifts, man lift, (3) hammer mills, pulverizer, 5x12' trommel screen, Belt-O-Matic dryer & cooler with air system, Holt Vertical mash dryer system, 6" & 14" U trough augers, plastic dry totes w/lids



717/926-1687 Lebanon, PA terryweaver@sunagri.com



CATERPILLAR 953 LOADER . \$30,000

**Heavy Equipment Loader Parts**  
Rt 22 Grantville, PA  
(717) 469-0039 help10070.com



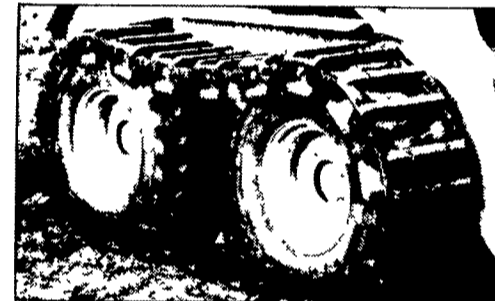
2002 Mitsubishi FGC15K, 3000Lb., LPG, 3 Stage, 83"-189" inch lift, S/S, 1870hrs. Great Condition, \$9,900

**superior lift** 717/336-1698

used forklift sales, service & rentals  
Ephrata, Pennsylvania



**GROUSER PRODUCTS TRACKS for Skid-Steers**



- Improve traction
- Reduce ground pressure
- Run-loose design
- Built-in length adjustment
- Install in 30 min remove in 10 min

Tracks In Stock  
**Call for Sizes and Prices**

**ABC GROFF**  
110 South Railroad Ave.  
New Holland, PA 17557  
**800-346-8319**

Visit our website: [abcgroff.com](http://abcgroff.com)  
Monday thru Friday: 7:30-5:00; Saturday 7:30-Noon  
Other Times By Appointment

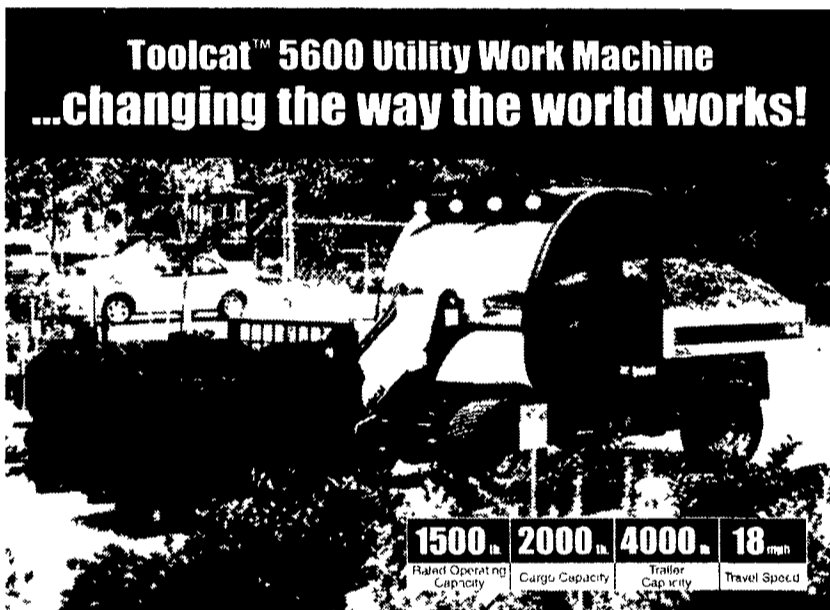
**LOTS OF ATTACHMENTS IN STOCK! When you need it NOW! Call us!**

- Clamp-On Bucket Forks**
- 1000 lb. Cap \$397
  - 2000 lb. Cap \$425
  - 3000 lb. Cap \$625
  - 4000 lb. Cap \$735
  - 6000 lb. Cap \$997

- 3-Point Mount Forks**
- 1200 lb. Cap \$225
  - 1500 lb. Cap \$298

- Skid Steer Loader Forks**
- 42" \$690
  - 48" \$695
- For All Current Major Mfg. Brands Of Loaders

**ABC GROFF**  
110 South Railroad Ave New Holland, PA 17557  
**(717) 354-4191**  
Mon Thru Fri 7:30-5:00 Sat 7:30-Noon Other Times By Appt



**You told us what you wanted. This is it.**

The revolutionary Toolcat 5600 was developed after hundreds of hours of research with equipment owners. It took years of innovative planning, designing and testing to create the 5600 — an entirely new concept that needed an entirely new category: the utility work machine.

- Combines the best features of a loader, pickup truck and attachment carrier.
- Excels at large property maintenance and commercial groundskeeping.
- Wide choice of Bob-Tach™ mounted attachments.
- All-wheel steer.
- Four-wheel drive
- Low ground disturbance.
- Carries a co-worker.
- Hydraulic box dump.



**The first of its kind!**

Discover the performance at  
**BOBCAT OF LANCASTER**  
4122 Oregon Pike  
Ephrata, PA 17522  
717-859-4646

[www.bobcat.com/toolcat](http://www.bobcat.com/toolcat)



**Bobcat**

*One Tough Animal*