

PRODUCE MARKETS

Philadelphia Vegetables

Terminal Market
December 10, 2003

Report Supplied By USDA

VEGETABLES -ARTICHOKE'S OFFER-
INGS FIGHT ctns CA Globe Thorned 12s
24 00 -ASPARAGUS MARKET ABOUT
STEADY 11 lb ctns/crts bchd PE Green jbo
14 00 exlge 14 00 lge 14 00-17 00 std 14 00-17 00
few 18 00 -BEANS MARKET SLIGHTLY
LOWER buctns/crts FL Round Green Type
Machine Picked 14 00-16 00 mostly 14 00 fair
appear 12 00 fair cond 8 00 Kentucky Wonder
Type 14 00 5 lb ctns GU Hericot Vert (French
Type) few 10 00 -BEETS MARKET STEADY
ctns bchd TX 12s 9 00-10 00 25 lb filmbags lse
CD med 6 00 NJ med 5 00 -BROCCOLI MAR-
KET HIGHER ctns AZ bchd 14s 16 00-19 00
Crown Cut 24 00 CA bchd 14s 16 00-18 00 few
19 00 Crown Cut 20 00-21 00 mostly 20 00
-BRUSSELS SPROUTS MARKET ABOUT
STEADY 25 lb ctns CA 18 00-21 00 sml 17 00
CABBAGE MARKET ABOUT STEADY 1
+ buctns & 50 lb ctns CD Red Type sml-med
7 00 GA Round Green Type med 6 00-8 00
mostly 7 00 NC Round Green Type med
6 00 7 00 mostly 6 50 7 00 sml-med 5 50 6 00
TX Round Green Type med 7 50-8 00 Red Type
med 10 00 50 lb sks NY Round Green Type lge
3 50 5 00 1 + buctns & 40 lb ctns TX Savoy
Type med 10 00 -CARROTS MARKET
ABOUT STEADY sks 48 1-lb filmbags CA
Topped med-lge 14 00-18 00 mostly 16 00 sks
24 2 lb filmbags CA Topped med-lge 16 00 sks
10 5-lb filmbags CA Topped med lge 16 00 50 lb
sks lse CD Topped jbo 6 50-7 50 mostly 7 00
ctns 24 1-lb filmbags CA Baby Peeled few 18 50
ctns 20 1-lb filmbags CA Baby Peeled
13 00-15 00 ctns 4 5-lb filmbags CA Baby Peeled
slms few 17 00 -CAULIFLOWER Wide range
in price ctns flmwrpd CA 12s 18 00-24 00 16s
18 00 -CELERY MARKET LOWER ctns CA

2 dz 15 00-18 00 mostly 15 00-16 00 2 + dz
14 00-16 00 mostly 15 00-16 00 few 16 50 3 dz
fair cond 10 00-12 00 filmbags 30s 18 00-19 00
-CHINESE CABBAGE MARKET ABOUT
STEADY celerts FL 10 00 30 lb ctns CA
Nappa one label 18 00 50 lb ctns AZ Nappa
18 00 CA Nappa 18 00 FL Nappa 14 00 GA
Nappa 11 00 -CORN-SWEET MARKET
ABOUT STEADY wbcrt FL Yellow 4-4 1/2 dz
few 16 00 sml 14 00 White 4-4 1/2 dz few 18 00
sml 15 00-16 00 -CUCUMBERS MARKET
ABOUT STEADY flts/ctns flmwrpd SP AIR
Long Seedless med 12s 13 00-14 00 WAXED 1
1/9 buctns/crts FL med fr qual 7 00-9 00 MX
med 12 00-15 00 fr qual 10 00 sml 10 00
UNWAXED 1 1/9 buctns/crts FL Pickles med
few 18 00 -FIG PLANT MARKET ABOUT
STEADY 1 1/9 buctns FL med 9 00 few high as
12 00 fair qual 7 00 MX 18s 9 00-11 00 fair ap-
pear low as 7 00 24s fair appear 7 00 8 00 35 lb
ctns HD Chinese 31 00-34 00 Japanese
25 00-26 00 30 lb ctns HD Thai 24 00 Indian
32 00-34 00 -ENDIVE MARKET ABOUT
STEADY 1 1/9 buctns/crts FL 10 00-11 00
mostly 10 50-11 00 ctns AZ 24s 11 00 10 lb ctns
BI Witloof 14 00 CA Witloof 15 00-16 00 -ES-
CAROLF MARKET ABOUT STEADY 1 1/9
buctns/crts FL 10 00-11 00 mostly 10 50-11 00
ctns AZ 24s 11 00 GARLIC MARKET
STEADY 30 lb ctns CA White super col 30 00
col 27 00 fair cond 18 00 super jbo 25 50 CQ
White #9 15 00 netted 3s 17 00-18 00 Purple #9
18 00 -GREENS MARKET ABOUT
STEADY ctns bchd AZ Collard 24s 9 00 Kale
24s 10 00 Mustard 24s 9 00 Turnip Tops 24s
9 00 Dandelion 12s 9 00 Swiss Chard 12s 11 00
Red 12s 11 00 CA Swiss Chard 12s 13 00 Mixed
Colors 12s 16 00 FL Mustard 24s Baby type
12 00 MX Swiss Chard Red 12s 13 00 TX Dan-
delion 12s 10 00 Kohlrabi 12s 10 00 Red 12s
10 00 Swiss Chard 12s 10 00 Red 12s 10 00
ctns/crts bchd FL Kale 7 00 GA Collard 24s

7 00 7 50 Kale 24s 7 00-7 50 NC Collard
6 00-7 00 Kale 7 00 Mustard 7 00 Turnip Tops
7 00 NI Kale 6 00-6 50 ctns lse CA Kale Flow-
ring 24s 14 00 -LETTUCE-ICEBERG MAR-
KET ABOUT STEADY ctns AZ 24s
24 00-26 00 30s fair appear 20 00 Wrapped 24s
24 00-27 00 mostly 26 00 30s fair appear
20 00-22 00 CA 24s 24 00 Wrapped 24s 26 00
MX 24s ord cond 10 00 -LETTUCE-OTHER
MARKET LEAF HIGHER, OTHERS ABOUT
STEADY ctns AZ Green Leaf 24s 20 00-23 00
Red Leaf 24s 14 00-15 00 CA Boston 12s
18 00-20 00 Green Leaf 24s 18 00-22 00 mostly
20 00 Red Leaf 24s 15 00-18 00 mostly 16 00 3
lb ctns CA Mesclun Mix 6 50-7 00 -LETTUCE
ROMAINE MARKET ABOUT STEADY ctns
AZ 24s 14 00-18 00 mostly 15 00-16 00 few
19 00 30s fair cond 10 00-12 00 CA 24s
15 00-16 00 few 13 00-14 00 few high as 18 00
ctns 12 3-count pkgs AZ Hearts 20 00 3/4 crts foil
lined AZ 24s 19 00 CA 24s 19 00 -MUSH-
ROOMS MARKET STEADY 10 lb ctns PA
lge 13 75 med 11 25 4 qt bkts PA med-lge 6 00
sml-med 5 00 5 lb ctns PA Oyster 16 00 Porto-
bellas 9 00 sml 8 00 3 lb ctns PA Shitake 13 00
fair qual 10 00 Oyster few 12 00 ctns 12 8-oz
trays flmwrpd PA 10 50 ctns 8 1-lb trays
flmwrpd PA 14 50 ctns 10 10-oz trays flmwrpd
PA 10 50 ctns 10 8-oz trays flmwrpd PA 9 50
-OKRA MARKET ABOUT STEADY 1/4
buctns 11 sml-med 15 00-16 00 few 14 00 -ON-
IONS GREEN MARKET GREEN ONIONS
LOWER, LEEKS ABOUT STEADY ctns bchd
MX 48s 8 00-10 00 mostly 9 00 few high as
9 00 48s sml 7 00-8 00 CA Leeks 12s
25 00-30 00 cartons 2 film bags iceless MX 24s
14 00 -PARSLEY MARKET ABOUT
STEADY ctns bchd AZ Plain 60s 20 00 CA
Curly 60s 15 00 Plain 60s 15 00-16 00 mostly
15 00 MX Curly 60s 20 00 TX Curly 60s 22 00
Plain 60s 23 00 Root 12s few 18 00-22 00 1 1/9
buctns/crts bchd FL Curly 60s 15 00-18 00 few
20 00 -PARSNIPS MARKET STEADY 20 lb
filmbags lse CD 12 00 MI few 12 00 -PEAS
GREEN MARKET SLIGHTLY LOWER 10
lb ctns GU Snow Peas 8 00-9 00 mostly 9 00 few
11 00 Sugar Snap Peas 18 00 -PEPPERS MAR-
KET ABOUT STEADY 1 1/9 buctns FL Bell
Type Green jbo 14 00 poor cond 1 00-2 00 exlge
14 00 poor cond 1 00-2 00 lge poor cond
1 00-2 00 med fair qual 5 00-7 00 sml 5 00-7 00
fair qual 5 00-7 00 Mxd Red And Green lge 6 00
poor cond 1 00-2 00 Red lge fair appear 12 00

med fair appear 10 00 15 lb ctns CA Bell Type
Red exlge 18 00-20 00 mostly 18 00 5 kg ctns IS
AIR Bell Type Orange 80-100mm 20 00 22 00
Red 80-100mm 20 00-22 00 Yellow 80-100mm
18 00-20 00 NI AIR Bell Type Red 80-100mm
20 00 -PEPPERS OTHER MARKET
STEADY 1/4 buctns FL Finger Hot 12 00-13 00
Hungarian Wax 8 00 mxd orange and green
6 00 Jalapeno fair qual 6 00 Anaheim few 13 00
Serrano 10 00-13 00 Habanero orange 20 00 GA
Jalapeno 10 00 fair cond low as 6 00 NC Haba-
nero orange 20 00-24 00 red 20 00-24 00 1 1/9
buctns MX Jalapeno 24 00 ord cond 10 00 few
lower 1 1/9 buctns FL Long Hot 10 00-12 00 few
13 00 few 9 00 Cubanellas med 8 00 TX Poblano
18 00-21 00 30 lb ctns DR Thai Chili Hot
Green 36 00 Red few 55 00 -RADISHES MAR-
KET ABOUT STEADY ctns tpd 30 6-oz film-
bags FL Red 6 50-7 50 Local Repack Red 7 00
ctns tpd 14 1-lb filmbags FL Red 7 00-8 00
Local Repack Red 8 00 40 lb filmbags tpd FL
Red 18 00 ctns bchd FL Red 24s 12 00 MX Red
24s 8 50-9 00 mostly 9 00 -RHUBARB OFFER-
INGS NONE
-RUTABAGAS MARKET ABOUT
STEADY 50 lb ctns CD CDOne med few 8 00
50 lb sks CD CDOne med 10 00 few low as 7 50
-SPINACH MARKET BCHD FLAT TYPE
SLIGHTLY LOWER, OTHERS ABOUT
STEADY ctns bchd AZ Flat 24s 14 00 MX Flat
24s 15 00 1 2/5 buctns bchd CA Flat 24s 20 00
ctns 4 2 1/4-lb filmbags CA Flat 13 00-15 00 4 lb
ctns CA Flat Baby Type 9 00-12 00 -SQUASH
MARKET ABOUT STEADY 1 buctns FL
Zucchini sml-med 7 00-9 00 med 7 00-8 00 poor
cond 1 00 2 00 Yellow Straightneck sml-med
9 00 10 00 fair cond 7 00-8 00 med 7 00-8 00
buctns MX Kabocha med 13 00-14 00 1 1/9
buctns/crts FL Acorn med 13 00-14 00 Spaghetti
med 13 00 4/7 buctns MX Zucchini sml-med
8 00-10 00 med 7 00-8 00 Yellow Straightneck
med 7 00 -SWEET POTATOS MARKET
STEADY CURED 40 lb ctns IA Beauregard
jbo 14 00 U S One Beauregard med 20 00-22 00
fair qual 14 00 NC U S One Beauregard med
18 00-19 00 -TOMATOS MARKET ABOUT
STEADY 25 lb ctns FL Vine Ripes light red-
red jbo 15 00-16 00 85% U S One or Better Ma-
ture Greens light red-red 5x6s 14 00 few lower
6x6s 10 00-11 00 mostly 10 00 fair cond 8 00
Local Repack 85% U S One or Better Mature
Greens light red-red 5x6s 18 25 6x6s 16 25 6x7s
16 25 ctns 2 lyr MX Vine Ripes light red-red

5x5s 13 00 fair qual 11 00 5 kg flts on the vine
CD CDOne Vine Ripes Greenhouse Hydroponic
light red-red med few 13 00-14 00 MX Vine
Ripes Greenhouse Hydroponic light red-red
med 12 00 NI AIR Vine Ripes Greenhouse Hy-
droponic light red-red med 17 00-18 00 -TO-
MATOES, CHERRY MARKET GRAPF
TYPF HIGHER, CHERRY TYPF ABOUT
STEADY
flts 12 1-pt bkts FL light red-red 7 00-8 00 flts
12 1-pt ctns with lids FL Grape Type light red-
red 8 00-10 00 few 11 00 -TOMATOES, PLUM
TYPE MARKET SLIGHTLY HIGHER 25 lb
ctns FL light red-red 14 00 few lower -TUR-
NIPS MARKET STEADY 25 lb filmbags CD
CDOne Purple Top med 8 00 NJ Purple Top
med 6 00-7 00 -VEGETABLES OTHER MAR-
KET ABOUT STEADY ctns 12 4-oz pkgs PA
Alfalfa Sprouts 6 50 45 lb ctns CA Cardoon
30 00 8 lb ctns CA Radicchio 9s 8 00-9 00 most-
ly 8 00
MISC SEASONAL -APPLE CIDER ctns 4
1-gal bottles PA Preserved 11 00 ctns 9 1/2-gal
bottles PA Preserved 13 00

Philadelphia Fruit

Terminal Market
December 10, 2003

Report Supplied By USDA

CITRUS FRUITS -CLEMENTINES MAR-
KET LOWER 2 3 kg crts SP 24s 3 00-4 50
mostly 3 00-4 00 fair cond 2 00-2 25 28s
3 00-4 00 mostly 3 00-3 50 fair cond 2 00 32s
fair cond 2 00 36s poor cond 50-1 00 -GRAPF
FRUIT MARKET ABOUT STEADY 4/5
buctns FL U S One Red 23s 11 00-12 00 27s
11 00-12 00 some 13 00 32s 10 50 11 00 36s
10 50-11 00 mostly 11 00 40s 8 00-10 00 mostly
9 00-10 00 one label 11 00 48s 8 00-9 00 Plamc
32s 13 00 -LEMONS MARKET STEADY ctns
AZ Shprs Choice 95s 19 00 14 00 115s 17 00
14 00 140s 16 5s 13 00-15 00 200s 14 00
-LIMES MARKET ABOUT STEADY 10 lb
ctns MX Seedless Type 36s one label 6 00 42s
5 00 one label 6 00 48s 4 50-5 00 mostly 5 00 one
label 6 00 54s 4 50-5 00 mostly 5 00 one label
6 00 63s 4 50-5 00 40 lb ctns MX Seedless Type
150s 12 00-13 00 175s 10 00-12 00 some 13 00
200s 13 00 -MISC CITRUS 10 lb ctns FL Kum-
quats 17 00-18 00 w/ stems/leaves FL Kumquats
15 00-16 00 -ORANGES MARKET ABOUT
STEADY ctns CA Shprs 1st Grade Navel 48s
16 50 56s 19 00 72s 15 00-18 00 88s 15 00 Shprs

(Turn to Page A13)



477 East Farmersville Rd., New Holland, PA 17557

(717) 355-2361



"We would use slats again if doing it all over"



Harold Keeney, David, Nancy & Mark Wolfskill

Our original plan was to install scrapers. But after 10 minutes in a slatted barn in Somerset County, we changed our minds. Some people stay away from slats because of the initial cost, but that extra cost is made up for in the first couple years.

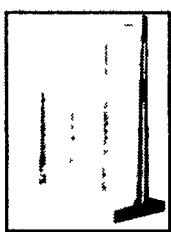
The one thing I like the most about slats is that there is no expense. I don't have any scrapers or drive units to maintain. I don't

have to run scrapers every day or haul manure like we did in our previous tie stall barn. The cows' foot health has been a lot better, and the cows stay much cleaner. Our milk production is up and the somatic cell count has gone down. I give at least some of the credit to the slats because with less moisture on the floor, there is less bacteria.

- David Wolfskill

"The answer to the most common question is 'No, there is no build-up.'"

Agricultural Pre-cast Products Available:



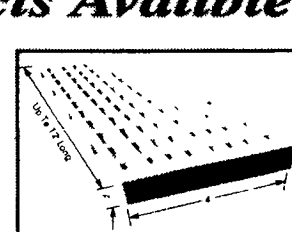
T-wall Bunker Silo
8 & 12 ft. high available



Slant-back J-style Feed Bunker



High Capacity H-style Feed Bunker



Cattle "Waffle Slat"
8000 psi



Keystone Knuckle Beam System helps support pit wall (NCRS approved)