

**(Continued from Page A2)**

Feeder Bulls Medium 1-2 pkg 370 lbs 93 00, few head 490-515 lbs 82 00-84 00 Small and Medium 2 pkg 360 lbs 69 00

Calves Compared to last Friday's very light run, slaughter calves sold with a firmer undertone, although mostly steady with the Tuesday run. Holstein bull calves sold sharply higher as buyer attendance resumed to normal. Holstein heifer buyers had to resort to purchasing lighter weight heifer calves, as the heavier supply was very light. A firmer undertone was noted. The USDA reported Northeast hide-off veal carcasses from 165 00-205 00 on Thursday with a weighted average of 194 11. The PA Department of Agriculture graded 591 head of bulls for the graded sale, with an estimated 79 percent of the graded run going into veal barns.

Slaughter Calves Standard, Utility, and Number 3 60 130 lbs 30 00-60 00, few as high as 70 00 in the regular auction, weaker 11 00-30 00

Holstein Calves Going Into Special-fed Veal Barns Graded Number 1 Holstein Bulls 120-124 lbs 115 00, 114-118 lbs 147 00, 98-112 lbs 155 00-157 00, 94-96 lbs 146 00, 90-92 lbs 110 00, 80-88 lbs 75 00-85 00. Graded Number 2 Holstein bulls 102-118 lbs 122 00-145 00, 94-100 lbs 100 00-115 00, 80-92 lbs 85 00. Graded Number 3 Holstein bulls 90-130 lbs 57 00-62 00, 75-85 lbs 47 00. Holstein heifers 100-115 lbs 33 00-40 00, 90-100 lbs 30 00-41 00, 80-90 lbs 25 00-40 00, 70-80 lbs 18 00-21 00. Planer Holstein heifers 100-115 lbs 12 00-28 00, 90 lbs 16 00-23 00, 80-90 lbs 11 00-23 00, 70-80 lbs 10 00-16 00

Sheep and Lambs Compared to Monday slaughter lambs sold with a weaker undertone on a very light run. Slaughter sheep sold mostly steady. The overall quality of the supply was below average with very few stand out individuals. Buyer attendance was light with moderate to light bidding activity. All sheep are sold by the pound and reported by actual weight at time of sale.

Slaughter Lambs Choice and Prime 2 3 40 50 lbs 130 00 138 00 few fancy 160 00 175 00 50 60 lbs 122 00-152 00 few fancy 162 00 165 00 60 70 lbs 125 00 144 00 70 80 lbs 121 00 135 00, 80 90 lbs 119 00-123 00 90 100 lbs 116 00-125 00 100 125 lbs 100 00-108 00 125 150 lbs few 86 00 94 00 Good 2 3 30 40 lbs few 90 00 122 00 60 70 lbs 110 00 113 00

Slaughter Sheep Utility and Good 1 3 Year

lings 70-100 lbs 88 00-110 00, 100-150 lbs 60 00-74 00 Sheep 100-150 lbs 54 00-67 00, long fleeced 40 00- 52 00, 150-200 lbs 40 00-55 00, long fleeced 35 00 Bucks 100-150 lbs 54 00-65 00, 150-200 lbs 54 00-64 00, 200-225 lbs 30 00 47 00

Slaughter Goats Compared to Monday, Kid goats sold mostly steady to weak. Yearlings sold mostly steady on a light test. Nannies sold steady to firm on a large supply, with high demand for heavier weight offerings. Billies also trended steady to firm on a light supply, with the greatest demand seen for heavier weight Billies trading as high as 182 00. Wethers were in light supply. The overall quality of the run was average to poor, with a large supply of very light weight Kid goats and Nannies. Buyer attendance was light with light to moderate bidding activity. All goats are sold by the head and reported based on estimated weights.

Kids Selection 1 40-60 lbs 71 00-85 00 Selection 2 10-20 lbs 10 00-19 00, 20-40 lbs few pigmies 30 00-39 00, 40-60 lbs 52 00-66 00, 60-80 lbs 62 00-74 00 Selection 3 10-20 lbs 6 00-15 00, 20-40 lbs 20 00-30 00, 40-60 lbs 32 00-43 00

Yearlings Selection 1 60-80 lbs individual 86 00 Selection 2 60 80 lbs 68 00-83 90

Nannies Selection 1 50-70 lbs 64 00-65 00, 70-100 lbs 72 00-79 00 Selection 2 50-70 lbs 52 00 58 00, pigmies 32 00-48 00, 70-100 lbs 60 00-71 00 100-150 lbs 74 00-81 00 Selection 3 50 70 lbs 39 00 47 00 70-100 lbs 52 00-63 00

Billies Selection 1 70-100 lbs 90 00 108 00, 100-150 lbs 117 00- 127 00 150-250 lbs two head 180 00 182 00 Selection 2 70-80 lb 70 00-80 00 few pigmies 56 00-68 00, 100 150 lbs 88 00 110 00 150-250 lbs 142 00 151 00

Wethers 50 70 lbs few 68 00 72 00 individual 83 00, 70 100 lbs individual 90 00 100-200 lbs 92 00-110 00

**Lancaster County Weekly Cattle**

New Holland, Pa. Report Supplied by USDA Friday, Dec. 5, 2003

THIS WEEK	2677	1977
LAST WEEK	2339	2086
LAST YEAR	1899	1504

This week in Lancaster County slaughter steers sold steady to firm early in the week with higher quality steers as much as 1 50 higher. Late week prices were 1 00-2 00 lower on Thursday. The first winter storm has moved

into the area on Thursday night, it was the same date last year when we received our first snow. So far, there has not been much accumulation, but there is expected to be anywhere from 6-12 inches by Saturday. Receipts are back to normal after last week's holiday shortened schedules, the only exception was a fairly light Monday run as area hunters partook in opening day of deer season. The western direct feedyards have held onto steady this week despite a lower futures market. Live sales are reported from 100 00-102 00, with dressed prices in Nebraska from 160 00-162 00. The spot December live cattle contract closed at 97 05 on Thursday, with January at 93 75. The boxed beef market has also trended lower the past few days.

Choice cutout values were from around 156 00-159 00. The slaughter Holstein steer, and slaughter heifer runs were light this week, with the only real test of Holsteins coming on Monday when high Choice and Prime cattle sold for as much as 106 00. Slaughter cows sold steady to 3 50 lower for the week, with a very good run on Thursday that included nearly 760 head. Slaughter bulls sold steady to 2 00 lower. The cattle supply this week in Lancaster County included 727 slaughter steers, 127 slaughter heifers, 1362 slaughter cows, 127 slaughter bulls, and 334 head of feeder cattle.

Slaughter Steers High Choice and Prime 2 4 1240 1465 lbs 105 50-112 50, mostly 107 00-109 00, 1510 lb single 108 00, few fancier up to 115 00 early in the week. Choice 2-3 1145-1490 lbs 102 50-108 00 mostly 103 00-105 00 full 99 00 103 75 heavy 1500 1540 lbs 99 50-102 50, Charolais crosses 1325-1435 lbs 105 50-107 50 High yielding Choice 1 2 1385-1460 lbs 108 00-114 00 High Select and low Choice 2-3 1095 1460 lbs 98 75-102 50 mostly 100 00 101 00, several full 96 00 98 50 Charolais-crosses 1215-1455 lbs 102 00-107 00 heavy 1520-1645 lbs 93 00 97 00 Sclct 1-2 1050-1440 lbs 91 50 98 50 mostly 93 00- 95 00 Standard 1 2 1090 1350 lbs 86 75-90 00

Holstein Steers High Choice and Prime 2 3 1420 1585 lbs 99 25 101 50 few fancy 105 50-106 00 Choice 2 3 1305 1660 lbs 92 25-97 00 few best cross 99 75-100 00 High Select and low Choice 2 3 1245 1565 lbs 86 00-89 50 few best crosses 94 75 95 25 Sclct 1 2 1275 1605 lbs 82 00 86 25 Standard 1 2 1070-1455 lbs 70 00 77 00 with a few returning to feed

Slaughter Heifers High Choice and Prime 2 3 1145 1345 lbs 105 00 108 50 Choice 2-3 1005 1420 lbs 100 00 105 00 Yield Grade 4 5 1195 1300 lbs 94 50 99 00 High Select and low Choice 2 3 1120 1415 lbs 95 00-96 00

Slaughter Cows Percent Lean Weight Bulk Low Dressing Premium White 65 70 Over 1600 lbs 58 75-64 00 50 00-58 50 High dressing 65 00-69 00 Breakers 75 80 Over 1400 lbs 51 00-58 00, 47 00-51 00, High dressing 57 50-59 50 Boners, 80 85, Over 1200 lbs 45 00-50 50 41 00 46 00 Lean (Hi-Yield) 85-88, Over 1200 lbs, 45 00 48 50 39 50 45 00 Lean, 88-90, Over 1000 lbs, 41 00 46 00, 35 00-40 75 Lean (Light Wt) 85-90 750-1000 lbs 37 00-43 00, 33 00-38 50

Slaughter Bulls Yield Grade 1 1365-2115 lbs 56 00-63 75 high dressing 65 50-70 00, full 1025-1935 on Thursday 49 50 56 75 Yield Grade 1-2 1175 2435 lbs 53 50-58 00

Call Summary This week in Lancaster County, slaughter calves sold steady to 10 00 lower. Holstein bull calves sold steady to as much as 30 00 higher throughout the week as buyer demand and attendance returned to normal. Holstein heifer calves sold steady to 30 00 lower. The USDA reported Northeast hide-off veal carcasses from 165 00-205 00 on Thursday, with a weighted average of 194 11. The PA Department of Agricul-

ture graded 1397 head of bulls and heifers at the two graded sales this week in the county.

Slaughter Calves Standard, Utility and Number 3 60-130 lbs 30 00-60 00, few as high as 70 00 in the regular auctions, weaker 10 00-30 00

Holstein Calves Going Into Special-fed Veal Barns

Monday- Holstein Bulls 90-125 lbs 127 00-140 00, 80-90 lbs 115 00-130 00 Planer-type Holstein Bulls 90-125 lbs 97 00 115 00, 80-90 lbs 77 00-90 00 Weaker Holstein Bulls 90-125 lbs 60 00-75 00 Holstein Heifers 85-110 lbs 400 00-460 00 Planer-type Holstein Heifers 160 00-300 00

Tuesday- Graded Number 1 Holstein bulls 121 lbs 112 00, 103 113 lbs 162 00 172 00, 95 lbs 160 00, 90 lbs 125 00, 80-85 lbs 80 00-95 00 few head 75 lbs 50 00 Graded Number 2 Holstein bulls 102-114 lbs 147 00-155 00, 95 lbs 120 00-122 00, 90 lbs 100 00 120 00, 82-84 lbs 75 00-80 00, 74 lbs 42 00 Graded Number 3 Holstein bulls 110 lbs 110 00 80-95 lbs 48 00-62 00 Graded Number 1 Holstein heifers 91-116 lbs 425 00 450 00, 83 lbs 250 00 75 lbs 150 00 Graded Number 2 Holstein heifers 93-109 lbs 410 00 420 00 83 lbs 210 00 72 lbs 130 00, 61 lbs 70 00

Thursday- Graded Number 1 Holstein Bulls 120 124 lbs 115 00, 114-118 lbs 147 00 98 112 lbs 155 00-157 60 94-96 lbs 146 00 90 92 lbs 110 00 80 88 lbs 75 00 85 00 Graded Number 2 Holstein bulls 102 118 lbs 122 00 145 00 94-100 lbs 100 00 115 00 80 92 lbs 85 00 Graded Number 3 Holstein bulls 90 130 lbs 57 00 62 00 75 85 lbs 47 00 Holstein heifers 100 115 lbs 330 00 405 00 90- 100 lbs 300 00 415 00 80 90 lbs 255 00-400 00 70-80 lbs 180 00-210 00 Planer Holstein heifers 100 115 lbs 120 00-280 00 90 100 lbs 160 00 230 00 80 90 lbs 110 00 235 00 70 80 lbs 100 00 160 00

**Pennsylvania Livestock Auction**

Waynesburg, Pa. Thursday, Dec. 4, 2003

Report Supplied By Auction

CATTLE STOCK COWS 50 00 57 00 SLAUGHTER COWS Utility & Commercial 50 00-61 50 Boner & Boning Utility 40 00 49 00 Cutter & Boning Utility 35 00 39 50 Canner & Low Cutter 30 00 34 50 Shells 30 00 & down

BULLS YIELD GRADE 1 1500# 2000# 47 00-65 00 YIELD GRADE 2 1000# 1400# 38 00 63 00

FEEDER STEERS M & I 1 300 500# 80 00 111 00 250-280# 80 00 109 00 M 600 900# 70 00-104 00

HEIFERS M & I 1 300 500# 78 00 88 00 1 1400 650# 60 00 90 00

BULLS M & I 1 300-620# 70 00-105 00

CALVES Veal Prime 70 00 85 00 Choice 60 00-84 00 Good 35 00-70 00 Farm Calves #1 Holstein Bulls 90 120# Few 35 00-95 00 #2 Holstein Bulls 80-100# Few 10 00-50 00, Beef - Bull & Hrs/Hd 35 00-90 00

HOGS Barrows & Gilts #1 2 210-255# 48 00-50 00, #2-3 255-280# 45 00-50 00 Sows #1-3 300-500# 22 00-42 00 Feeder Pigs 1-3 15-20# 5 00-22 00/Hd 1 3 25 35# 10 00 23 00/Hd

LAMBS High Choice 80-100# 80 00 108 00 Choice 40-75# 85 00-133 00, Feeder Lambs Good 65 00-96 00, Sheep 35 00-55 00, Fat Sheep 35 00 and down

GOATS Large 45 00-120 00/Hd, Medium 30 00-71 00/Hd, Small 10 00-30 00/Hd

HORSES Horses 19 00-51 50, Ponies 20 00-48 00

**Greencastle Hay**

Greencastle, Pa. Report Supplied By Auction

Thursday, December 4, 2003

HAY 13 loads TOTAL! 13 loads ALFALFA 122 50-140 00 MIX HAY 55 00-127 50

**Jersey Shore Livestock Market, Inc.**

Jersey Shore, Pa. Report Supplied By Auction

Thursday, Dec. 4, 2003

RI TURN TO FARM AIF 80-450 GOOD VFAI 50 00-79 00 COMMON VFAI 20 00-49 00 CHOICE STEERS 99 00-104 00 SELECT STEERS 80 00-100 00 COMMON STEERS 50 00 79 00 COMMERCIAL COWS 52 00-62 00 CANNERS/CUTTERS 40 00 51 00 SHELLS 24 00-39 00 CHOICE HEIFERS 97 00 101 00 SELECT HEIFERS 80 00 96 00 COMMON HEIFERS 45 00-79 00 GOOD FEEDERS 70 00-90 00 COMMON FEEDERS 35 00-69 00 BULLS 45 00-65 00

**Greencastle Livestock**

Greencastle, Pa. Report Supplied by PDA

Thursday, Dec. 4, 2003

CATTLE 208 STEERS ONE SELECT 1 2 AT 75 00 STANDARD 1 2 60 50 70 00

HOLSTEIN STEERS STANDARD 1 2 52 00 60 00 HEIFERS ONE STANDARD 1 2 AT 65 00 COWS PREAKERS 75 50 FEAN 48 00 54 75, HIGH YIELDING UP TO 61 25

LOW DRESSING DOWN TO 45 60 AVER AGE 52 70 BONERS 80 85% LEAN 42 00-52 50 ONE AT 56 75 AVERAGE 46 75 FEAN 85 90% LEAN 35 00 49 75 MOSTLY 40 00 45 75 AVERAGE 42 35 SHELLS 47 75 AND DOWN

BULLS FEW YIELD GRADE 1 225-1775 LBS 61 50 63 25 FEW YIELD GRADE 2 1150-1615 LBS 52 50 59 75

FEEDER CATTLE STEERS LEAN HOLSTEINS 305/310 LBS 59 00 COUPEE 835 & 1035 LBS 50 00 & 59 00

HEIFERS COUPEE 3 HOLSTEIN 565 & 955 LBS 66 00 & 69 00

BULLS FEW M & I 2 70 00 83 00 CALVES 326 STANDARD & GOOD 70/120 LBS 40 00 72 50 UTILITY 50/120 LBS 10 00 30 00 LAMB CALVES NO 1 BULLS 90-25 LBS 120 00 150 00 AVERAGE 135 30

80/90 LBS 95 00 25 00 NO 2 BULLS 80/125 LBS 70 00 127 50 HOLSTEIN HEIFERS FEW NO 1 HEIFERS 95/110 LBS 37 00 41 00 NO 2 70/125 LBS 100 00 360 00 BEEF CROSS BULLS AND HEIFERS 80/95 LBS 70 00 170 00

HOGS 11 BARROWS AND GILTS 45 50% LEAN 210/215 LBS 32 00 33 00 SOWS ONE 1-3645 LBS AT 31 00

FEEDER PIGS NO MARKET TEST SHEEP 4 FEW CHOICE 75/90 LBS 80 00-97 50 FEW SLAUGHTER SHEEP AT 37 00

GOATS NO MARKET TEST

**Virginia Hay Auction**

Richmond, Va. Report Supplied by USDA

Thursday, Dec. 4, 2003

Rushville Semimonthly Hay Auction Harris onburg Va on Dec. 3 Prices per ton FOB or less otherwise noted. Most loads delivered free within 10 miles of auction site. Delivery beyond 10 miles mostly 2 00 per milc. Volume 188 tons.

Alfalfa/orchardgrass mix Large square Premium 150 00 Small round Fair 75 00 Mixed Grass Large square, Good 80 00-95 00, Fair 63 00 Small square, Fair 75 00 Large round, Good 61 00-93 00 Fair 40 00 Small round, Good 57 00 79 00 Wet wrapped, Fair 24 00

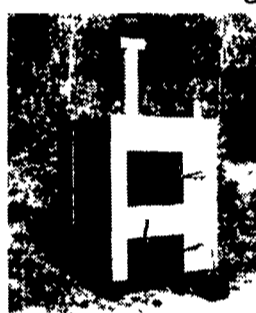
Orchard Grass Large square Good 111 00-121 00 Small square, Premium 3 05-3 30 per bale, Good 110 00 Large round Good 76 00-81 00 Small round Good Wet wrapped 10 00 per bale

Timothy Large square Premium 125 00 Good 28 00 per pair Large round, Good 60 00-76 00, Fair 44 00-56 00 Small round Fair 31 00

Corn Fodder Large square 20 00 per bale

**Mahoning Outdoor Furnaces**

Cut Heating Cost With An Outdoor Furnace



An Efficient Solution To All Your Heating Needs!

Standard Models Burn Wood, Coal Multi-Fuel Models Burn Wood, Coal, Oil, Propane, Gas or Waste Oil "Adapts To All Existing Systems"

www.mahoningoutdoorfurnaces.com

**800-692-5200**

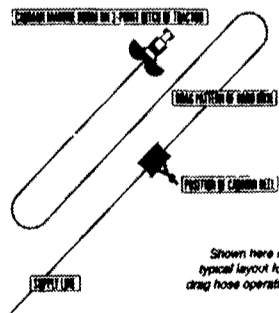
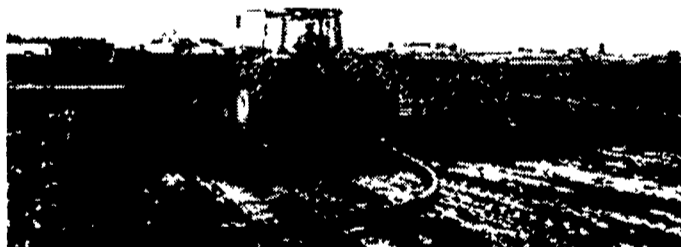
Manufacturing Furnaces Since 1990

The Natural Way To Heat! Dealerships Available in Some Areas

**Setting the Standard in Manure Management**

A low compaction, high volume method of applying liquid manure on less than ideal ground conditions while also reducing odor.

Photo taken at Burk-Lea Farms Stanley Burkholder Chambersburg PA



Park your Hard Hose Drag Reel in the center of the field the manure is to be applied in. Uncoil the hard hose pulling towards the farthest corner. Simply drag the hose back and forth across the field until the whole field has been covered. When finished, unhook the applicator from the hard hose and wind in the hose.



High volume: Flow rates possible that are equal to (3) 6,300 gal. spreaders @ 3 loads per hour each!

Low compaction: Nothing heavier than a 150 hp tractor is ever in the field!

Reduced odor: When used in conjunction with an Aerway soil aerator, odor is virtually eliminated.

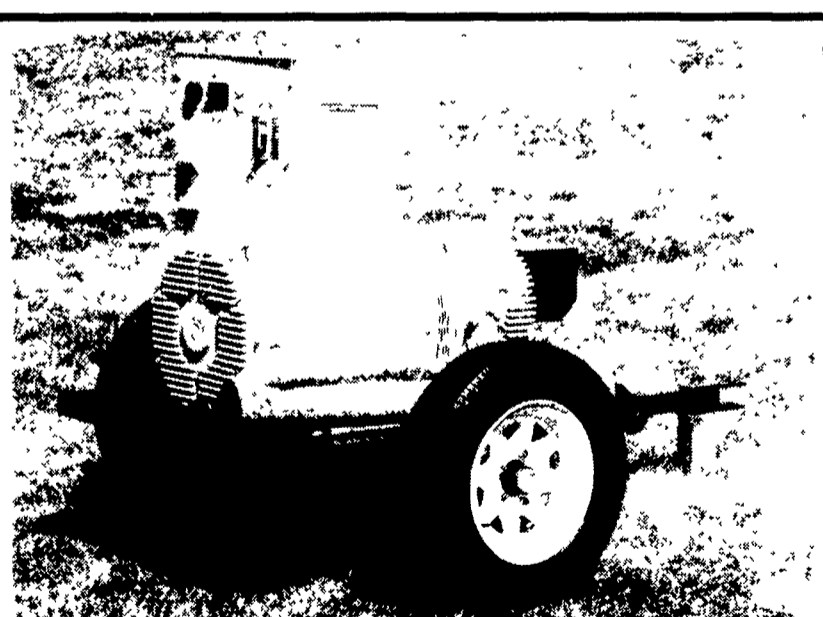
Complete system w/4.5" x 1320' drag hose, 3-pt. spray boom, 3,000' of 6" supply line, manure irrigation pump and 12' Aerway incorporator is currently available for demo/rental/sale

Call Ross Johnson

800-222-2948 • 610-563-6196 4019 Ashville Rd. • Quarryville, PA 17566

www.midatlanticagri.com

MID-ATLANTIC agri systems



**GENERATORS** Sales ★ Service ★ Rentals Complete Generator Systems PTO • Portables • 2-1600 KW

We Service It If You Have It, And Sell It If You Need It.

MARTIN MACHINERY

34 W. Mohler Church Rd. Ephrata, PA 17522 Tel: 717-738-0300 Fax: 717-738-4329