

www.kbford.com

Your Internet Connection

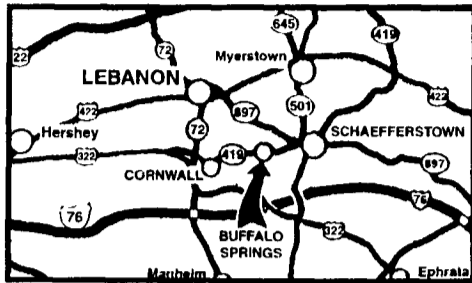
SPECIALIZING IN NEW & USED SUPER DUTY PICKUPS

KELLER BROS.

(Buffalo Springs) Lebanon, PA

717-949-2000 or 1-800-363-2767

LEBANON COUNTY'S HEAVY DUTY TRUCK HQTRS.



FAMILY OWNED AND OPERATED FOR OVER 80 YEARS

Over 100 Clean Pre-Owned Vehicles In Stock At All Times!!

1994 FORD F150 4X4
Reg-Cab Flareside
5.0 Supercharged V8, 5-Spd., A/C, PW/PL, Custom Wheels, Very Sharp
\$8,995



2000 FORD F-150
Super Cab, 4x4, Flare Sides, Local, One Owner, Very Clean, 67,000 Orig. Miles
\$19,875



2001 FORD SPORT TRAC 4x4
4.0L AT, A/C, PW, PL, Alloy Wheels, Sharp
Only **\$20,773**



2001 FORD F-350 XLT SUPER CAB DUALY
7.3 Turbo Diesel, 6-Spd, A/C, PW, PL, 1-Owner, Local Trade
\$30,975



1979 DODGE ADVENTURA 150
V8, AT, 1-Owner, Nice Conditioning, w/cap, only 79,000 Miles
\$2,950



2002 CHEV SILVERADO
V8, AT, A/C, PW, PL, CD Player, 1 Owner
\$22,554



2001 FORD F150 SUPERCREW 4x4
5.4 V8, AT, A/C, PW, PL, C, CD Player, 39,000 Miles
\$24,995



2002 FORD F350 XLT CREW CAB DUALY
7.3 Powerstroke Diesel, 6-Spd., A/C, PW, PL, only 9,800 miles
\$34,975



2001 FORD F250 SUPER CAB 4x4
7.3 Turbo Diesel, AT, A/C, PW, PL, 1-Owner
\$25,375



2000 FORD F250 CREW CAB XLT
Long Box, 1-Owner, AT, A/C, PW, PL, 35,200 Miles
\$21,995



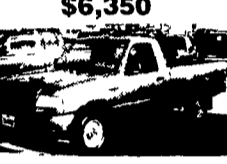
1998 FORD E350 CLUB WAGON
15-Pass., 5.5 V-8, AT, Dual A/C, PW, PL,
\$13,995



1999 FORD RANGER SUPER CAB 4x4
4.0 V6, AT, A/C, XLT, PW, PL
\$11,995



1999 FORD RANGER REG CAB 2WD
5-Spd., A/C, C, T, Cassette, 1-Owner, 35,000 Miles
\$6,350



1999 FORD F250 SUPER CAB XLT 4x4
7.3 Turbo Diesel, AT, A/C, PW, PL, Hi-Miles, Runs Great
\$15,995



2001 FORD F350 XL Dump Truck
5.4 V8, 5-Spd., AM/FM/Stereo Only 7,000 Miles. Ready to Work
\$25,900



2000 FORD F250 SUPERCAB XLT 4x4
V8, AT, A/C, PW, PL, 28,000 Miles
Only **\$23,995**



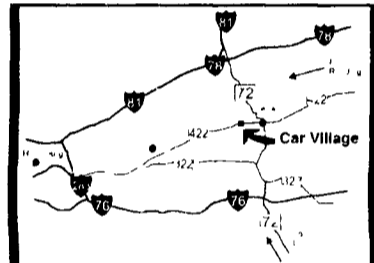
Nicest Trucks In the East • Nicest Trucks In the East • Nicest Trucks In the East • Nicest Trucks In the East • Nicest Trucks In the East • Nicest Trucks In the East

www.useddieseltruck.com

2300 W. CUMBERLAND ST. (Rt. 422)
LEBANON, PA 17042
(Across From Lebanon Valley Mall)

CAR VILLAGE

1-800-650-1420
717-274-2000



5 SP CUMMINS SHORTBED 4X4
2001 DODGE 2500 QUAD CAB
Very Nice, Only 43,000 Miles, 24 Valve Cummins Turbo Diesel, 5 Sp., A/C, Tow Pkg, Alloy Wheels



ONLY 45,000 MILES
1997 DODGE 2500 QUAD CAB 4X4
Very Nice Tk, Cummins Turbo Diesel, Auto, A/C Loaded, Laramie SLT Pkg., Tow Pkg., Chrome Wheels



550 HAULER
2000 FORD SUPER DUTY CREW CAB
The Ultimate Tow Machine Heavy 17,500 GVW Powerstroke Turbo Diesel, 6 Sp., A/C Loaded XLT, Captain Chairs Only 7,000 Miles



\$19,900
97 GMC CREW CAB DUALY
4 Wheel Drive, Like New! A Must See Only 35,000 Miles, Loaded, All Options Tow Pkg Positively The Nicest Anywhere



POWERSTROKE AUTO
2003 FORD F350 CREW CAB DUALY 4X4
They don't come any nicer, only 15,000 miles, 7.3 Powerstroke Diesel, Auto A/C, Loaded XLT, Alloy Wheels Gorgeous Two Tone



CHEVY 4 DOOR SHORTBED
2002 CHEVY 2500 4X4
The Awesome Duramax Diesel & Allison Trans, Loaded LT Package, Capt Chairs Console, Alloy Wheels



GSP POWERSTROKE
2002 FORD F350
6 Sp., 4 Door, Single Rear Wheel, This One's Like New, Only 13,000 Miles, Loaded XLT Lariat Tow Pkg., Alloy Wheels & Plenty More



IT'S A HEMI!
2003 DODGE 3500 4X4 DUALY
Only 3,000 Miles, Like Brand New Hemi! Powered and Sharp Enough to Do Some Serious Towing



CREW CAB DURAMAX
2001 GMC 2500 4x4
Very Strong Running Truck, Pulls Great Room for the Family Remaining New Tk Warranty



NICEST '92 ANYWHERE
92 FORD F250 SUPER CAB 4x4
Local Trade, 7.3 Diesel, Auto, A/C, Capt Chairs, Tow Pkg., Excellent Body & Paint



6.0 POWERSTROKE
2003 FORD F250 4 DOOR 4X4
Like New Only 3,000 Miles, Auto, Loaded XLT, Capt Chairs, Console, Alloy Wheels, This One Has It All



6 SPD POWERSTROKE
2001 FORD F250
Hard To Find Regular Cab, Powerstroke Turbo Diesel, A/C, Off Road Pkg., Alloy Wheels



5 SP CUMMINS
92 DODGE 350 DUALY
2 WHEEL DRIVE
Runs Well, Tow Pkg., 5 Sp., A/C



NEW STICKER \$43,100
OUR PRICE \$34,900
03 CHEVY 2500 4 DOOR 4X4
Like New & Only 12,000 Miles, Allison Auto, Duramax Diesel, H D Tow Equipment, A Gorgeous Truck



4x4 CREW CAB DUALY
6 SPD POWERSTROKE
99 FORD F350
Loaded, XLT Lariat, A/C, All Power Equipment, Aluminum Wheels

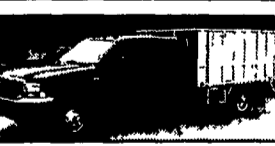


99 DODGE QUAD CAB DUALY
4 Wheel Drive, Cummins Turbo Diesel Auto, A/C, Tow Pkg Very Nice Clean Truck
Only **\$23,900**

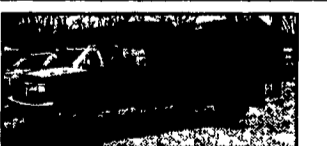
FLATBEDS, WORK & DUMP TRUCKS



4 DOOR MECHANICS TRUCK
2000 FORD F350 4x4
Only 48,000 Miles, Powerstroke Turbo Diesel, Auto Loaded XLT, Royal Truck Body, Open Top Lids



EBY BODY
2001 FORD F350 CREW CAB 4X4
V10 Gas, Auto, A/C, 8x Aluminum Body Swing Open Rear Gates, Tool Boxes



95 FORD 450 RACK BODY DUMP
99 FORD
Heavy 15,000 GVW, Powerstroke Turbo Diesel, 5Sp, A/C, 12 Foot Body



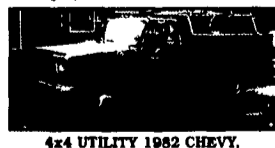
GREAT FARM TRUCK
2000 FORD F350
With Aluminum Flat Dump, Single Rear Wheel, V8, AT, A/C **\$16,900**



SHORTBED 4 DOOR
2003 FORD F250 4 WHEEL DRIVE
Extra Nice Only 23,000 Miles
7.3 Powerstroke, Auto Loaded XLT Duraliner Ford Warranty



550 DUMP
2002 FORD 4X4 SUPER DUTY
A Rare Find, Only 15,800 Miles, 7.3 Powerstroke Turbo Diesel, 6 Sp., A/C, Heavy 17,500 GVW 3 Yard Dump



4x4 UTILITY 1982 CHEVY.
Runs great, 80,000 original miles
350 V8, Auto, 9 ft Reading Box, Ladder Racks,
\$7,900



550 MECHANICS BODY
99 FORD
A Rare One, Heavy 17,500 GVW, Powerstroke Turbo Diesel, Auto, A/C, Vinyl, Seats & Floor, Tow Pkg, Only 63,000 Miles, Very Clean



NO C D L
2000 FORD 850 SUPER CAB DUMP
No CDL License Required, 28,000 GVW, Only 22,000 Miles, Cat Diesel, Allison Auto, A/C, Hail Dump Body



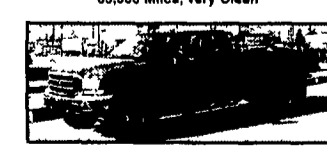
4x4 SUPER CAB FLATBED
99 DODGE 3500
A Rare Find Cummins Turbo Diesel, Auto, A/C, 12 ft Bed, Tow Pkg



TRACTOR - CAR HAULER
2001 CHEVY 3500 SUPER CAB
Only 13,000 Miles, 8100 Vortec 6 Sp Manual Trans, Ramps, Electric Winch



4x4 MECHANIC'S TRUCK
99 FORD F450 SUPER DUTY
9 Foot Body, Tow Package, Powerstroke, Turbo Diesel, Auto, A/C, only 66,000 Miles



4x4 FLATBED
2000 Ford F350
Extended Cab 4x4, Only 32,000 Miles, Powerstroke Turbo Diesel AT, A/C, 9 1/2 Ft. Bed, Removable Sides



L PAK CREW CAB DUMP
2003 FORD 550
A RARE FIND
Only 10,491 Miles, Like New, Remaining Warranty, 6.0 Powerstroke, Auto, A/C



4x4 DURAMAX
2001 CHEVY 3500
Ready To Work, Duramax Diesel, AT, A/C, Snow Plow Prop. Only 27,000 Miles

Nicest Trucks In the East • Nicest Trucks In the East • Nicest Trucks In the East • Nicest Trucks In the East • Nicest Trucks In the East • Nicest Trucks In the East