

350 TRUCKS / TRAILERS

7511 Allentown Blvd.
Harrisburg, PA 17112

AFFORDABLE CARS AND TRUCKS, INC.

717-652-1925
FAX 717-652-4888
Hours. Mon. & Tues 9-9
Wed. thru Sat 9-6

75 TRUCKS IN STOCK

"You Gotta Believe!!"

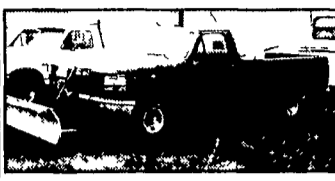
New Exit #72A, Rt. 81 N; Rt. 22 East of Harrisburg; 3 Miles North of Hershey Park

01 FORD EXCURSION LIMITED 4x4

7.3 Powerstroke
Leather 3rd Seat
Dual AC & Heat
Loaded &
Flawless 112K
\$22,995



94 FORD F150 XL



6 Cyl 5-Sp 4x4
Myers Plow
Nice Truck 100 000
Miles
Ready For Snow?
\$5,995



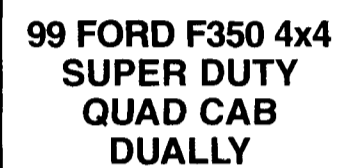
87 CHEVY C-20 SILVERADO 4x4
350 V8 AT, AC 8600 GVW, No Rust Fantastic Truck, 81K!
\$6,995



99 FORD F250 XL 4x4 SUPER DUTY,
Quad Door Longbox, 7.3 Powerstroke Dsl 6 Spd, AC & More, Extra Nice truck, 1-Owner, All Maintained, 180K
\$14,995



97 DODGE RAM 1500 4x4 EXT. SHORT BOX
SLT Sport, V8, AT, AC, PW, PDL, Tilt & More Very Sharp! Only 90K
\$9,995



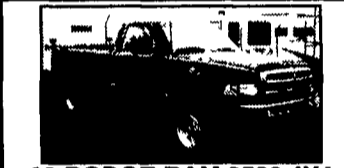
99 FORD F350 4x4 SUPER DUTY QUAD CAB DUALY
Power Stroke Diesel, 6-spd, 140K Miles.
\$19,995



90 CHEV 1500 4X4 SILVERADO PU
350 V8, AT, AC, PW, Longbox New PA Insp., Very Clean Truck, 1-Owner, 150K No Rust!
\$4,500



95 DODGE RAM 2500 4x4 EXT. LONG BOX SLT
Laramie, Cummins Turbo Dsl AT, AC PW, PDL, Only 61,000 Miles, Absolutely Showroom Condition In & Out!
\$17,995



98 DODGE RAM 2500 4X4 SLT LARAMIE
Cummins Turbo Disc 5 SP Only 60 000 Miles With All the Equipment Want a New Truck For 1/2 the Price!
\$19,995



00 FORD F250 XLT 4x4 SUPER DUTY QUAD DOOR,
Long Box, 7.3 Powerstroke, AT, AC, PW, PDL, Tilt, Cruise Extra Clean & Sharp 140K
\$19,995



87 CHEVY 1500 SILVERADO 4X4
V8, AT, AC, PW, PDL, Nice Clean Truck, 130K
Only \$3,495



95 DODGE DAKOTA LE 4X4
318 V8, AT, Loaded & Sharp, 110K, Beautiful
\$4,995



96 FORD F-350 XLT 4X4 CREW CAB
Longbox, 7.3 Powerstroke Dsl, AT, AC, PW & All Option Blk/Silver Only 103K, Perfect Truck!
\$18,995



99 DODGE RAM 2500 4X4 SLT
Laramie, Shortbox, Cummins, Turbo Dsl, 5 sp, AC, Power Everything & Just Like New! 150K Looks Like 50K
\$18,995



98 DODGE DAKOTA SLT 4X4 SPORT
Ext Cab V6 AT, AC, PW, PDL, Tilt, Cruise & More 100,000 Mi Dk Green
\$7,995



00 FORD F350 XLT 4X4 SUPERDUTY CREW CAB,
Longbox, 7.3 Powerstroke, 6 Spd, AC PW PDL, Tilt, Towing & More This 100,000 Mi Trk Looks & Runs Like a New \$49,000 Truck For Only
\$21,995



97 FORD F250 XLT 4x4 EXT.
Longbed, 7.3 Powerstroke, AT, AC, PW, PDL, Tilt, & More, 2 Tone Blue, 100,000 Mi
\$15,995



99 FORD F350 XLT 4X4 CREW CAB SUPERDUTY
7.3 Powerstroke Dsl AT AC PW PDL Tilt & More This is Perfect! 120K Bright Red!
\$20,995



98 FORD F150 XLT 4X4 EXT. THIRD DOOR,
Short Box Sportside 4.6 V8 AT AC PW PDL Tilt & More 90K
\$10,995



96 FORD F350 XL 4x4
1 Ton 9000 GVW HD 7.3 Powerstroke dsl 5 speed AC cloth seat Real Clean Truck No Disappointments All blue 110K
\$12,995



96 CHEV SCOTTSDALE 2500 4x4,
Heavy Duty 8600 GVW 8 Lug AT AC Vortec 350 Very Clean Truck Would Make Great Plow Truck! 108K
\$8,995



79 DODGE POWER WAGON 4x4 SHORTBOX,
V8 AT Up & Down Plow Very Good 100 000 Mi Truck Works Real Well
First \$3,000 Gets It.



97 FORD F250 XLT 4X4
Ext Longbox, 7.3 Powerstroke Dsl 5-Speed AC, PW PDL, Tilt Cruise Beautiful 2 Tone Green Paint Truck Is Sharp 150K
\$13,995

Disclaimer Mileage listed for your convenience only it is approximate not to be relied on as exact Sorry for any inconvenience

1981 Peterbilt 359
Day Cab, 400 Cat, 13 Spd. OD
\$9,500



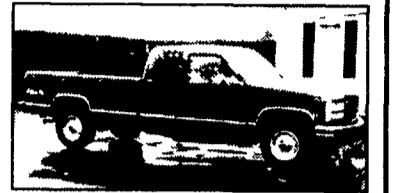
(2) 40' Log Trailers
\$4,500 & \$6,500

717-768-8647 Eves.
717-203-4461 Days

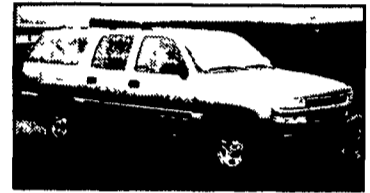
1986-Peterbilt 359-400 Cat-15Sp Alum
Wheels-270 Wheelbase **\$16,000/OBO**
Call 540-350-2461



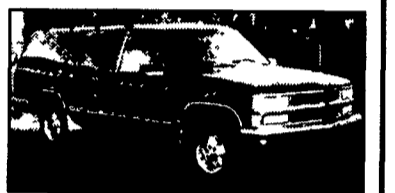
00 GMC SL 2500, 4x4
Extended cab, 350 auto, PS, PB, Cruise, Tilt, Air, 8600 GVW, 3.73 ratio limited slip diff., new AT, radials, 41,000 miles, black
\$18,500



1998 GMC SLE 1500, 4x4
Extended cab, 350 Auto, PS, PB, PW, PDL, Cruise, Tilt, Air, AMFM Cass/CD, New Radials, 87,000 miles, ex cond.
\$13,500



00 Chevy Silverado 1500 4x4
Suburban, 5.3 Auto, PS, PB, Air, Barn doors, 3.73 ratio, limited slip diff, vinyl seating, rubber mat, 61,000 mi., pewter
\$17,900

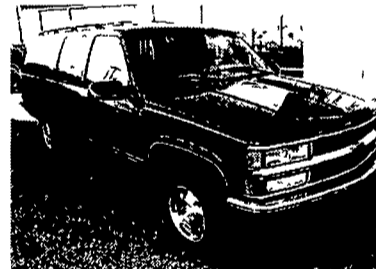


1995 Chevy Silverado LT, 1500 4x4, Suburban, 350 Auto, PS, PB, PW, PDL, Cruise, Tilt, Dual Air, 8 Pass, Barn doors, Blue & sandstone, 82,000 miles
\$11,995

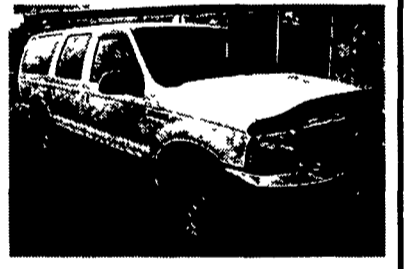
A&J AUTO SALES

798 E. Main St., Rt. 322 East, Ephrata, PA. 17522
717-733-2873

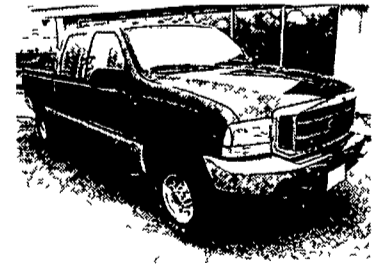
WHITMOYER 717-467-7022
FORD 800-267-2088
Over 80 Quality Pre-owned Vehicles In Stock



1996 CHEV. SUBURBAN LT
8 Cyl., Loaded, Lthr., CD, Tailgate
#P4587B2 **\$12,995**



2000 FORD EXCURSION XLT
10 Cyl., Loaded, 3rd Seat, Dual A/C
#3198A **\$19,987**



2004 FORD F250 4x4
V10, Auto, Loaded
#3269 MSRP \$39,235 **\$35,805**



2004 FORD F150 XL 4x4
Lowest Prices Around!
#W9773 MSRP \$26,580 **\$24,748**

4X4	4X4	4X4	4X4	4X4
2003 FORD EXPEDITION XLT	#P8646	\$29,995		
2003 FORD EXPLORER XLT	#P0948	\$23,995		
2002 FORD EXPLORER XLS	#P1341	\$21,995		
2002 FORD EXPLORER E.B.	#7890A	\$23,995		
2002 FORD EXPEDITION XLT	#P1171A	\$24,995		
2002 MERCURY MOUNTAINEER	#P3826	\$23,995		
2001 FORD RANGER XLT	#P4943	\$15,995		
2000 DODGE DAKOTA	#0364A	\$14,995		
2000 FORD EXPLORER XLT	#P1451	\$14,228		
2000 FORD EXPEDITION E.B.	#P8244A	\$17,995		
2000 FORD EXCURSION XLT	#3198A	\$23,995		
2000 FORD RANGER XLT	#P0146	\$14,995		
2000 MERCURY MOUNTAINEER	#P1338	\$18,995		
1999 FORD EXPLORER E.B.	#2664A	\$13,995		
1998 FORD F150 XLT	#W3555A	\$13,995		
1996 CHEVY SUBURBAN LT	#P4587B2	\$12,995		
1996 FORD F150 XLT	#8730A	\$12,995		
1995 FORD F150 XLT	#5882A	\$9,995		