



WENGER'S OF MYERSTOWN

CONSTRUCTION EQUIPMENT & PARTS

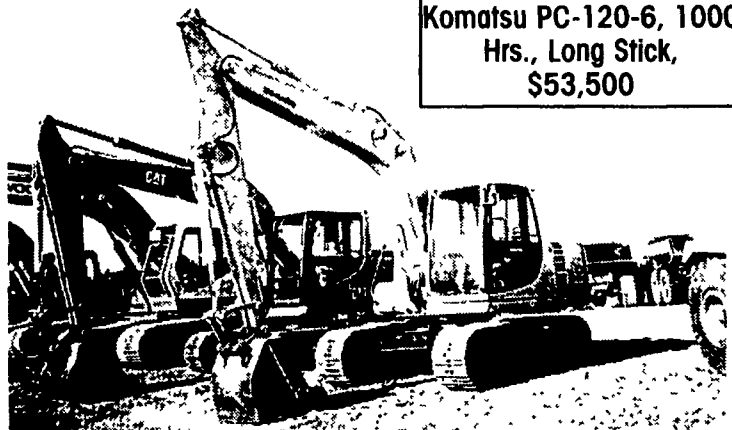
800-552-5080 • Nights 717-272-9583

Rt. 501 South Myerstown, PA 17067

HOURS: Mon-Fri • 7:30-5:00 Saturday • 7:30-Noon

www.wengers.com

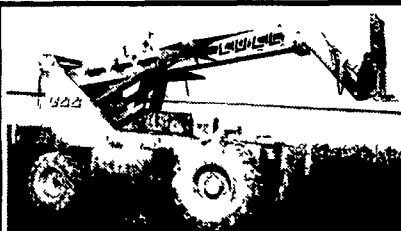
kbaum@wengers.com



Komatsu PC-120-6, 1000 Hrs., Long Stick, \$53,500



Cat 307C, 6 To Choose From \$42,500 Each



622 Lull Lift, 6000 lb., 32' Lift, 4 Cyl diesel, Good Condition.

Groffdale Concrete Walls
430 Concrete Ave.
Leola, PA 17540
717-656-2016



\$3850

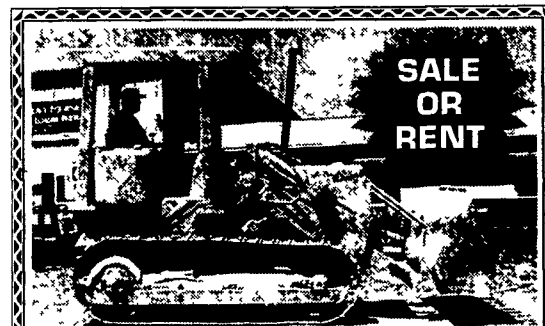
1987 Elgin Peligan Street Sweeper, 24,000 Miles, Very Good Condition, Work Ready
Contact Jeff Kumpel 609-859-0211

D&D MAINTENANCE EQUIPMENT LIQUIDATION SALE

610-965-0995 OFFICE 610-965-0997 FAX

USED EQUIPMENT SALE ALL IN GOOD CONDITION

- | | | |
|--|----------------------|---------|
| Snow Blower for Case Skidder New | \$3,900 | \$2,500 |
| High Press Hot Water Cleaner Gas Powered | | \$1,800 |
| Dump Truck Cover 2 New 1 Used Take All | | \$350 |
| Drive Up Ramps | | \$20 |
| Rammer (Whacker) | | \$950 |
| Sears Cargo Carrier (Roof Carrier) | | \$50 |
| New Cement Mixer Used 3 Times Gas Powered | | \$2,000 |
| 8 Hour Honda | | \$2,000 |
| 2 Western Stainless Steel Salt Spreaders | \$2,700 per Spreader | |
| Tar Kettle, (Pot) Good for Roofing or Paving | | \$1,000 |
| Snow Plow for 4x4 Honda Four Wheeler | | \$100 |
| Small Honda Power Washer for Cars and Decks | | \$150 |
| Sandblaster 100 Lb Air | | \$350 |
| 3 Double Pane Windows New 38x61 | \$65 per Window | |
| 30 Gallon PVC Drums | \$8 per Drum | |
| Used Trench Shoring Box | | \$2,000 |
| 450 Gallon PVC Water Tank | | \$150 |
| 3 New Mountain Bikes 28" \$300 New | \$150 per Bike | |



SALE OR RENT

Cat 941/951 CRL Loader 8 Crawler Loaders To Choose From

Heavy Equipment Loader Parts, Inc.
10070 Allentown Blvd., Grantville, PA 17028
No Sunday Calls (717) 469-0039

EQUIPMENT RENTALS

Contractors, Business Owners, Farmers & Others - You Don't Have To Buy Excavating Equipment For Your Jobs

Rent From Us For Less!



CHIPPERS up to 18"



BACKHOES



TRACK LOADERS



PAVING ROLLER



DOZERS



EXCAVATORS



TRAILERS



VIBRATORY ROLLERS



SKID LOADERS



POST HOLE DIGGER



LASER GRADERS



REMOTE TRENCH ROLLERS



SKID LOADER HAMMER



DUMP TRUCK HAULING



BACKHOE w/HAMMER



EXCAVATOR w/HAMMER



MINI EXCAVATOR



EQUIPMENT TRANSPORTING



CONCRETE SAWS



JUMPING JACKS



AIR COMPRESSOR



SMALL BACKHOES



ROTARY CUTTERS



TELESCOPIC FORKLIFT



SCISSOR LIFTS



LITE TOWERS



MANLIFTS

More Machines Being Added, Call For Prices & Availability

STONEY CREEK

CONTRACTOR SERVICES

212 Park Road P.O. Box 99 Blandon PA 19510

(610) 321-1321 Fax (610) 321-1521



MIKE ZYNDORF LLC

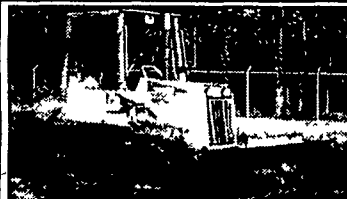
609/625-8660

609/641-3342 (Evenings)

FAX 609/625-8664

6481 Harding Hwy (Rt. 40) Mays Landing, NJ 08330

Visit us at www.mzequipment.com for our complete inventory



1998 Komatsu D31P-20, LPG, 6 Way Blade, OROPS, Low Hrs \$35,500



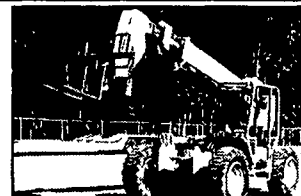
90 Cat E110B, cab, 20 in pads, 36" bucket, aux, hyd \$25,500



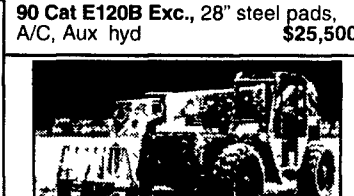
90 Cat E120B Exc., 28" steel pads, A/C, Aux hyd \$25,500



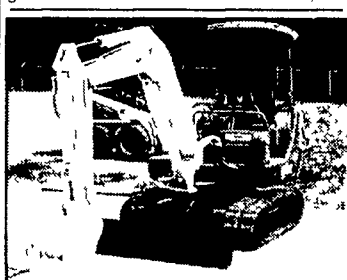
1987 Komatsu Dozer, Model D31P-17 LPG model 3 spd trans good u/c \$18,500



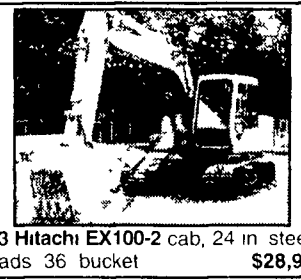
96 JCB 506B, telescopic forklift 6000lb cap 4x4, 36" reach \$28,900



97 Lull 6K-37 - telescopic lift JD diesel, VG Cond \$29,500



94 & 96 Cat 307SSR, Choice of 2, Rubber Tracks Blade & Articulated Boom \$24,900



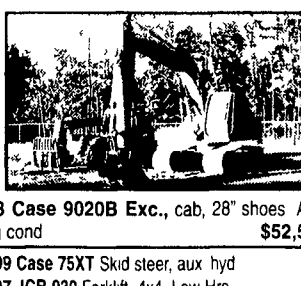
93 Hitachi EX100-2 cab, 24 in steel pads 36 bucket \$28,900



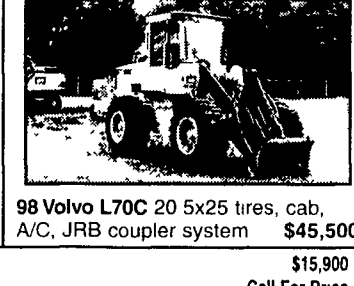
98 Kobelco SK200LC, Aux Hyd Cab 32 Track Shoes 42 Bucket w/Teeth \$52,500



98 Kobelco SK300LC, V/G cond, Low hrs \$69,900



98 Case 9020B Exc., cab, 28" shoes A/C vg cond \$52,500



98 Volvo L70C 20 5x25 tires, cab, A/C, JRB coupler system \$45,500

- (2) B50-2 "93 & 94" equipped w/rubber tracks, blade, canopy \$15,500
- B27-2 R tracks, blade & cab offset boom \$16,900
- B37-2 R tracks, blade & canopy \$12,900

- '99 Case 75XT Skid steer, aux hyd \$15,900
- '97 JCB 930 Forklift, 4x4 Low Hrs Call For Price
- '88 GMC Brigadier water truck, 2300 gal Smith tank 5 spray heads \$21,900
- '94 Simon Manlift MP60, 60 reach, 4x4, diesel \$13,900
- '99 IHC 4700, dump truck, p/s a/c cruise \$22,900
- (2) 1997 Speciality Light Plants model BT K6 4MH, Kubota diesel, 4-1000 watt bulbs \$2,950 - \$3,250
- (1) 1994 Amida Light Plant model SL4060D 4MH, Kubota diesel, 4 1000 watt bulbs \$2,500
- '96 Manitou Rough Terrain Straight Mast 4x4 5000 lb capacity 21' 3 stage mast Ford diesel power \$16,900
- '98 Ford F700 dump truck diesel, no CDL needed \$21,500
- Ditch Witch 255SX Trencher cable plow gas powered 300 hours \$7,900

PHOTO COMING SOON



New rubber tracks available for most excavators

Delivery

South Jersey New Full Line Eager Beaver Dealer

Financing

