

15 CONSTRUCTION EQUIPMENT

1996 615 Cat Elevating Scraper \$48,000 (717) 991-2515

John Deere 410C back hoe with cab 2500 hrs \$15,000 obo (570) 799-5257

JD 410C encl cab, 24' bkt, 2 WD, gd cond \$16,000 JD 655B encl cab, gd tracks, trans & eng 4100 hrs, 2 yd bkt, \$38,000, JD 490E cab, heat, radio, 42" & 24" bkts, thumb, 24" tracks, exc cond \$58,000, (717) 382-4878 ext 101 paulmc@maplelawnfarms.com

(2) 2002 Zim mobile concrete mixers, 10 yd like new mounted on '94 & '96 Mack tri axle 300 Bbl silo Ken 607 276 6864

'78 Ford tri-axle, 3406 CAT engine (less than 200,000 mi) all new tires, steel box, \$14,500 (570) 356-2444 Leave message

Bobcat 963, 1999, 850 hrs, 2 spd, 105hp, 82" bkt, \$19,000 717-786-0256

Bobcat 773, 1995, 68" bkt w/bolt on tooth bar, 1930 hrs, \$10,000 717-786-0256



Route 206 North, P.O. Drawer E
Newton, NJ 07860
(973) 383-3370
Outside NJ 1-800-545-1278
Toll Free NJ (Parts) 1-800-372-9207
JD FINANCING AVAILABLE TO QUALIFIED BUYERS
FAX: 973-383-5756

WHEEL LOADER BACKHOES

- 1999 NH 575E, cab, 4x4 560 hrs \$34,500
- 1992 JD 410D cab, 4x4 \$27,500
- 1997 Case 590 SL, cab 4x4, extendable dipper \$31,000
- 1999 JD 410E cab, 4x4, exte **SOLD** oper, excellent \$52,500

TRAILERS & TRUCKS

- 1975 Executive MFR home 440 Dodge \$2,500

EXCAVATORS

- 1998 JD 490D w/Wain Roy Swinger \$24,500
- 1991 Kubota KH191, fair \$11,500

CRAWLERS

- 1974 JD 350, 6-way, 90% U **SOLD** clutches & brakes \$14,500

**HYUNDAI
SAKAI
TRAIL KING
TRAMAC
MUSTANG**



JOHN DEERE

**Want To
Buy Late
Models JD
Dozers &
Excavators**

COMPACTION EQUIPMENT

- 1993 Sakai SW350, 3-5 ton, 600 hrs \$13,500

HYDRAULIC EXCAVATORS

- 1992 JD 70D w/blade \$20,500
- 1990 JD 790D \$39,500

SKID STEER LOADERS

- 1998 Bobcat 773 low hrs w/backhoe attachment \$21,500
- JD 24A diesel, 1400 lb lift, 900 hrs painted \$5,650

ATTACHMENTS

- 36' Wain Roy ripper bucket fits Wain Roy quick hitch 690 size \$4,500
- 93A Backhoe \$2,000
- Sweepster RHFA broom 6' for 3pt hitch tractor \$900
- 4N1 bucket for JD 755 crawler loader \$2,500
- New 4N1 bucket for JD 455G \$5,000

MISCELLANEOUS

- New Moil Point for Stanley MB120 hammer \$375
- 1996 Neal M450 gas, 8-12 ft paver \$11,500
- Imperial Eastman 208-T, hyd hose cut off saw 12" blade \$1,850
- Portable welding ventilator \$500

**Celebrating
Our 20th Year
1983-2003**

JERRE MARTIN REPAIR

391 N. Farmersville Rd., Ephrata, PA 17522

(Just minutes off RT 222)

717-859-3283 Toll Free 877-317-5348

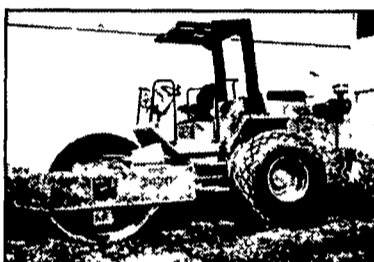
**Celebrating
Our 20th Year
1983-2003**



Cat D4H, 6 Way Blade \$25,000



Fiat Allis FL9 Crawler Loader, 4N1 Bkt., Rebuilt Eng. \$13,500



'97 Hamm 2420, 84" Drum Drive \$29,000



'93 Cat 320N Excavator, 8.5' Transport Width, Quick Coupler \$42,000



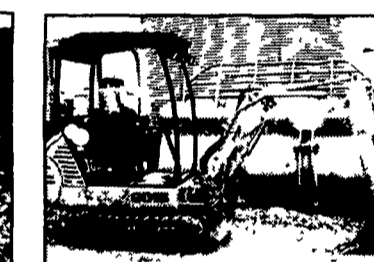
Komatsu D21S Crawler Loader (Late Model) \$13,000



IR SD100D Roller \$32,000



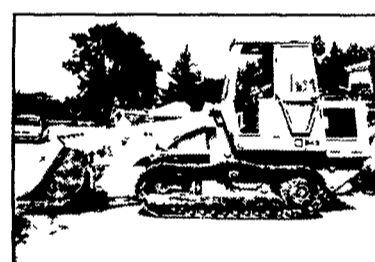
JD 570A, Excellent \$16,200



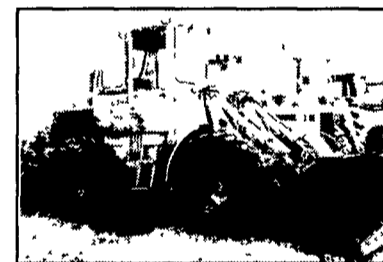
'99 JCB 8015 mini-excavator, ilike new \$11,500



MF 165 Multi-Power w/Loader \$55,000



'82 Cat 943 Crawler/Loader, Rebuilt Eng., New Undercarriage \$25,000



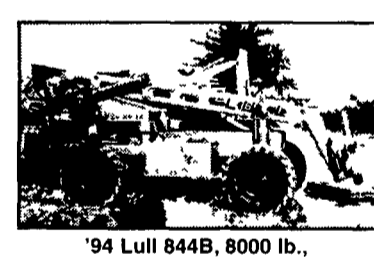
JD 544 Loader \$12,500



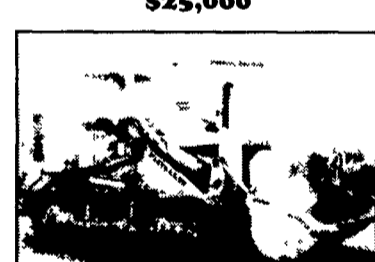
'98 Samsung SE130 \$32,000



Lull 1044, 10,000 Lb., 42Ft. w/Outriggers, JD Dsl. \$23,500



'94 Lull 844B, 8000 lb., 36' Reach \$22,000



Fiat Allis FL14C Loader \$13,500



Bobcat 231 Excavator, Good Cond \$12,500



'98 JD 410E, 4x4, E-hoe, 2600 hrs \$32,000



99 Kobelco SK150 LC Series IV \$51,000



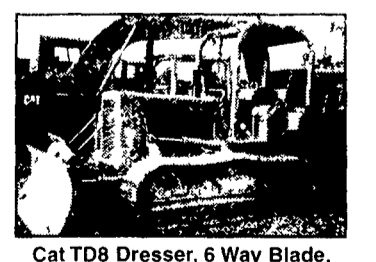
'97 Traverslift 6035 w/JD dsl \$23,000



Takeuchi TB035 excavator good cond \$13,500



85 JD 655B, Rebuilt Trans, New Paint \$19,000



Cat TD8 Dresser, 6 Way Blade, Ex. Cond. \$15,000



Takeuchi TB025 \$12,500



Cat 953, new U/C \$34,000



JD 550G, 6-way, factory cab \$24,000

WE ARE BUYERS FOR LATE MODEL CONSTRUCTION EQUIPMENT NEEDING REPAIRS

Road Service Available Now, Custom Repairs On All Makes Construction Equipment

'99 Cat 226 skid loader \$15,000

'97 Hamm 2420 roller, 84" drum drive \$29,000

**• Sales • Service
• Rental Repairs**