



PRODUCE MARKETS

Philadelphia Fruit
Terminal Market
December 3, 2003

Report Supplied By USDA

CITRUS FRUITS CLEMATINE MAR KEF LOWER 2 3 kg crts SP 20s 3 50-4 75 fair cond 2 50-3 00 ord cond 1 50-2 00 24s 3 50 4 75 mostly 3 50-4 00 fair cond 2 50-3 00 ord cond 1 50-2 00 28s 3 50-4 50 mostly 3 50-4 00 32s 2 50-3 50 ord cond 1 00 2 25 36s 3 00-3 50 -**GRAPEFRUIT** MARKET STEADY 4/5 bucrts FL U S One Red 23s 13 00 27s 11 00-13 00 32s 11 00-12 00 36s 10 00 11 00 40s 9 00-10 00 48s 8 00 56s 9 00 Star Ruby 27s 14 00 32s 13 00 36s 12 00 40s 11 00 48s 10 00 -**LEMONS** MARKET STEADY ctns AZ Shprs Choice 95s 18 00 115s 17 00 140s 16 00 165s 14 00 200s 14 00 CA Shprs Choice 95s 17 50 18 00 115s 16 00 165s 15 00 200s 14 00 -**LIMES** MARKET ABOUT STEADY 10 lb ctns MX Seedless Type 42s 5 00 48s 4 50-6 00 mostly 5 00 fair cond 4 00 4 00 54s 4 50-5 50 fair cond 3 00-4 00 63s 4 50-5 50 40 lb ctns MX Seedless Type 150s 9 00 175s 10 00-12 00 mostly 12 00 fair cond 8 00 200s 10 00 12 00 mostly 11 00 12 00 MISC CITRUS 10 lb ctns FL Kumquats 18 00 w/ stems/leaves FL Kumquats 15 00 16 00 -**ORANGES** MARKET STEADY ctns CA Shprs 1st Grade Navel 48s 20 00 22 00 56s 20 00 22 00 72s 19 00-21 00 some 22 00 88s 18 00 20 00 some 21 00 113s 15 00 17 00 138s 13 00 Shprs Choice Navel 56s 14 00 72s 13 00 88s 13 00 113s 12 00 4/5 bucrts FL Navel 48s 11 00-12 00 56s 12 00 64s 11 00 12 00 80s 11 00 100s 10 00 125s 9 00 Rcd 48s 12 00 56s 12 00 64s 12 00 80s 11 00 Hamlms 80s 10 00 fair cond 9 50 100s 10 00 fair cond 8 50-9 00 -**ANGIOS OFFERINGS** INSUFFICIENT TO QUOTE
TANGERINES MARKET STEADY 4/5 bucrts FL Sunburst 80s 20 00 100s 16 00 19 00

120s 14 00 16 00 150s 14 00 180s 12 00 1 ctns w/ stems/leaves CA Fairchild jbo 10 00 lge 8 00 10 00 med 6 00

BERRIES -**BLUEBERRIES** MARKET LOWER flts 12 4 4-oz cups with lids CL med-lge 22 00 few higher -**RASPBERRIES** MARKET STEADY ctns 24 12-oz filmbags MA Late Howe 35 00-40 00

-**MISC BERRIES** MARKET LOWER flts 12 5 6-oz cups with lids GU Blackberries 15 00 MX Blackberries 18 00 RASPBERRIES MARKET HIGHER flts 12 1/2-pt bkts with lids CA Red 20 00-24 00 CI Red 22 00-24 00 -**STRAWBERRIES OFFERINGS** LIGHT flts 12 1-pt bkts CA med-lge fair appearance 15 00-18 00 preferred labels 34 00-36 00

MELONS -**CANTALOUPS** MARKET LOWER 1/2 ctns DR 9s 10 00 11 00 12s 10 00-11 00 some high as 14 50 15s 10 00 11 00 GU 9s 8 00 11 00 fair cond 7 00 ord cond 4 00-5 00 12s 9 00-12 00 ord cond 4 00 5 00 15s 12 00 1 00 mostly 12 00 18s 12 00 13 00 -**HONEYDEWS** MARKET LOWER ctns GU 4s 11 00 12 00 5s 11 00-12 00 6s 11 00 12 00 MISC MELONS OFFERINGS INSUFFICIENT TO QUOTE

WATERMELONS MARKET ABOUT STEADY ctns per ctn FL Red Flesh Seedless Type 4s 20 00 5s 20 00 Sangria 3s 15 00-16 00 mostly 15 00 MX Red Flesh Seedless Type 4s 20 00 5s 15 00-16 00 one label 23 00 6s 12 00 Sangria 3s 18 00

NON CITRUS FRUITS APPLES MARKET STEADY ctns trypk PA U S ExFcy 72s Nittany 20 00 Jonagold 56s 15 00 16 00 64s 15 00 WA WAFsFcy Red Delicious 56s 22 00 64s 22 00 72s 22 00 80s 21 00 22 00 88s 20 00 21 00 mostly 20 00 100s 18 00-20 00 113s 18 00 125s 17 00 Golden Delicious 64s one label 28 00 72s one label 28 00 80s one label 26 00 88s one label 26 00 100s one label 22 00 Granny Smith 88s 25 00 100s 24 00 Fuji 56s one label

38 00 64s 32 00-35 00 one label 38 00 72s 32 00 80s 28 00 32 00 one label 36 00 88s 28 00-32 00 100s 20 00 one label 30 00 Gala 72s one label 36 00 80s one label 36 00 88s one label 36 00 100s 27 00-28 00 U S ExFcy Granny Smith 64s 22 00 72s 22 00 80s 22 00 88s 22 00 100s 20 00 113s 18 00 125s 18 00 ctns cclpk VT U S ExFcy McIntosh 80s 24 00 U S Fcy McIntosh 80s 14 00 96s 11 00 120s 9 00 lge ctns WA WAFsFcy Red Delicious 60s 28 00 72s 28 00 80s 28 00 Golden Delicious 60s 26 00 ctns 12 3-lb filmbags PA U S Fcy Red Delicious 2 1/2" min 8 00-9 00 -**AVOCADOS** MARKET MX HIGHER, OTHERS ABOUT STEADY ctns 2 lvr MX Hass 48s 25 00-27 00 ctns 1 lvr FL Various Greenskin Varieties 6s 11 00 7s 10 00-11 00 8s 9 00 9s 11 00 12 00 -**BANANAS** MARKET STEADY 40 lb ctns IMPORT 11 00 fair qual 9 00-10 00 7 50-8 00 petite 13 50 40 lb ctns 9 00-10 00 10 50 20 lb ctns IMPORT Baby 10 00 Manzano 12 00 -**CHERRIES OFFERINGS** LIGHT MARKET STEADY 11 lb ctns CI Bing jbo 40 00 xlge sz 38 00 -**FRUITS OTHER** ctns 1 lvr CA Apple Pears Shinko 12s 12 00 14s 13 00 17s 11 00 Yali 16s 12 00 18s 12 00 FI Carambola Star Fruit 20s 15 00 25s 15 00 MX Cactus Pears Red 20s 12 50-13 00 30s 12 50-13 00 36s 12 50-13 00 -**GRAPES** MARKET ABOUT STEADY 19 lb lugs bgd CA U S One Red Globe lge 15 00 16 00 med-lge 13 00 14 00 fair cond 10 00 Crimson Seedless lge 21 00-22 00 fair cond 12 00 med-lge 15 00 17 00 mostly 16 00-17 00 some 14 00 fair appearance 10 00-12 00 ord cond 5 00-8 00 Autumn Royal med lge 16 00 med 14 00 18 lb lugs bgd PF Thompson Seedless med-lge 45 00 16 lb lugs bgd CA U S One Thompson Seedless med ord cond 8 00 10 00 (NOTICE FOR YES! FRIDAY'S REPORT ADD CRIMSON SEEDLESS MED-LGE ORD COND 5 00) -**KIWIFRUIT** MARKET STEADY flts 1 lvr CA Hayward 36s 8 50 ctns 22 lb lge CA Hayward 30 s 16 00 -**MANGOS** MARKET ABOUT STEADY flts 1 lvr BR Tommy Atkins 8s 4 00 fair cond 2 00 3 00 9s few 4 00 fair cond 2 00-3 00 10s fair

cond 2 00-3 00 12s fair cond 2 00-3 00 HT Francis 9s 8 00 9 00 -**NECTARINES OFFERINGS** INSUFFICIENT TO QUOTE

-**PAPAYA** MARKET ABOUT STEADY 40 lb ctns FI Green Cooking Type 14 00 3 5 kg containers JM Strawberry 6s 9 50 10s 9 50 4 kg containers BR Golden 9s few 9 00 35-40 lb ctns BZ Maradol red 17 00 -**PEACHES OFFERINGS** INSUFFICIENT TO QUOTE

PEARS MARKET STEADY 4/5 bucrts WA U S One D'Anjou 80s 22 00 90s 22 00 4/5 bucrts wrpd WA U S One D'Anjou 70s 22 00 80s 22 00 90s 22 00 100s 20 00 110s 19 00 120s 18 00 135s 17 00 40 lb ctns PA U S One D'Anjou 2 1/2" up fr cond 10 00 CONTROLLED ATMOSPHERE STORAGE 4/5 bucrts wrpd WA U S One Bartlett 70s 24 00 80s 24 00-26 00 90s 24 00 100s 20 00-22 00 110s 18 00 120s 18 00 -**PERSIMMONS** MARKET STEADY ctns 1 lvr CA 15s fair cond 7 00-8 00 18s fair cond 7 00 20s 13 50 fair cond 6 00-7 00 24s 12 00 fair cond 5 00-6 00 25 lb ctns lge CA Hachiya lge fair cond 10 00-12 00 med fair cond 8 00 sml fair cond 6 00 -**PINFAPPLES** MARKET ABOUT STEADY ctns 1 lvr CR golden ripe 5s 12 00-14 00 6s 12 00-14 00 some 10 00 7s 12 00-13 00 8s 12 00-13 00 some 10 00 EC golden ripe 6s 13 00 7s 12 00 8s 10 00 ctns 2 lvr CR 14s 15 00-16 00 -**PLANTAINS** MARKET ABOUT STEADY 50 lb ctns CB Yellow 16 00-16 50 mostly 16 00 EC Green 16 00-16 50 mostly 16 00 -**PIUMS OFFERINGS** INSUFFICIENT TO QUOTE

POME GRANATES MARKET STEADY ctns 2-lvr CA Wonder 16s 28 00 fr qual 18 00 20s 28 00 fr qual 18 00 24s 18 00 26s 14 00 16 00 mostly 14 00 28s 14 00-16 00 mostly 14 00 -**PRUNES OFFERINGS** INSUFFICIENT TO QUOTE

Philadelphia Vegetables

Terminal Market
December 3, 2003
Report Supplied By USDA

VEGETABLES -**ARTICHOKE** OFFERINGS NONE

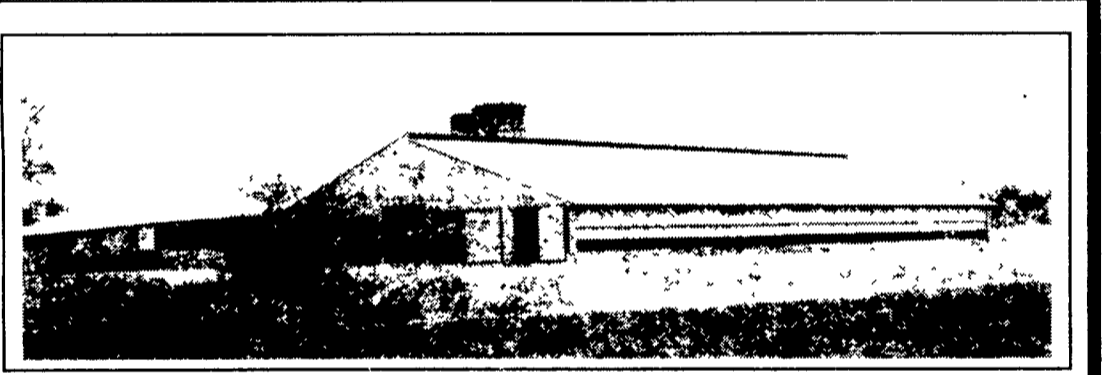
-**ASPARAGUS** MARKET ABOUT STEADY 11 lb ctns/crts bchd CB Green lge 16 00 std 16 00 PE Green lge 14 00-15 00 few 16 00 fair cond 8 00 10 00 std 15 00-16 00 few 17 00 sml 14 00 -**BEANS** MARKET SLIGHTLY HIGHER bucrts/crts FL Round Green Type Machine Picked 14 00-16 00 few 18 00 fair cond 12 00 5 lb ctns GU Hericot Vert (French Type) 11 00-12 00 PE AIR Hericot Vert (French Type) 15 00 30 lb ctns/crts MX Round Green Type Handpicked 18 00-20 00 -**BEETS** MARKET STEADY ctns bchd TX 12s 9 00-10 00 25 lb filmbags lge CD med 6 00 -**BROCCOLI** MARKET HIGHER ctns CA bchd 14s 12 00-14 00 few high as 16 00 Crown Cut 14 00-17 00 NC bchd 14s 9 00-10 00 Crown Cut 11 00-12 00 -**BRUSSELS SPROUTS** MARKET STEADY 25 lb ctns CA 20 00-21 00 -**CABBAGE** MARKET ABOUT STEADY 1 1/2 bucrts & 50 lb ctns FL Round Green Type med 8 00 GA Round Green Type med 6 00-7 00 NC Round Green Type med 6 00-7 00 NY Round Green Type med 7 00 Red Type med 8 00 TX Round Green Type med 9 00-10 00 Red Type med 10 00 50 lb sks CD Round Green Type lge 4 50-5 00 NY Round Green Type lge 3 15-4 00 1 1/2 bucrts & 40 lb ctns NY Savoy Type med 9 00 TX Savoy Type med 10 00 -**CARROTS** MARKET ABOUT STEADY sks 48 1-lb filmbags CA Topped med-lge 16 00 few 14 00 CD Topped med-lge 12 00 sks 24 2-lb filmbags CA Topped med-lge 16 00 few 14 00 CD Topped med-lge 16 00 50 lb sks lge CA Topped 20 00 CD Topped jbo 6 00-7 00 ctns 24 1-lb filmbags CA Baby Peeled 13 50-15 00 ctns 4

(Turn to Page A13)

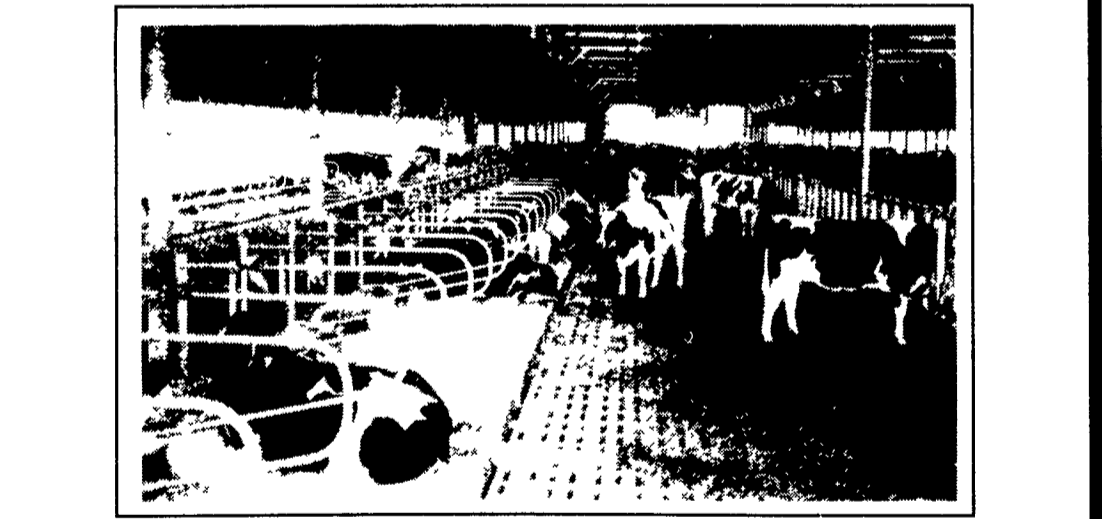
KEYSTONE CONCRETE PRODUCTS INC

477 East Farmersville Rd.
New Holland, PA 17557
(717) 355-2361

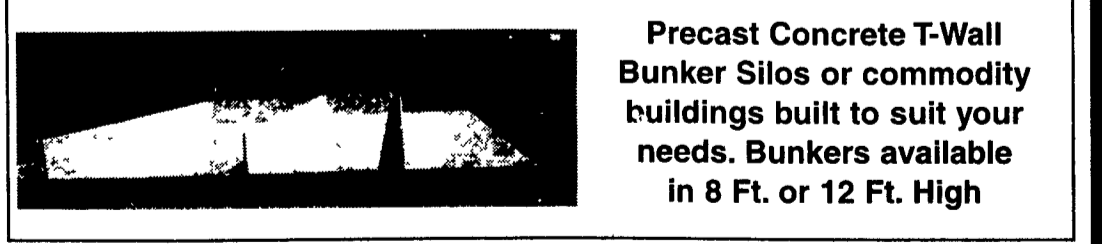
"WAFFLE SLAT"
Sylri Con Corporation



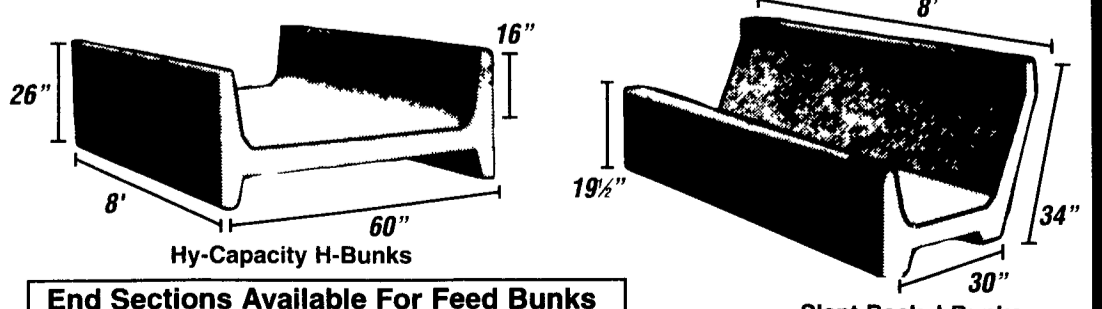
Concrete Slatted Free Stall Barn



Long Core Cattle Waffle Slats



Precast Concrete T-Wall Bunker Silos or commodity buildings built to suit your needs. Bunkers available in 8 Ft. or 12 Ft. High



End Sections Available For Feed Bunks

Give us a call for more information on hog, beef, dairy and heifer barns.

Let Your Crops Dine On Na-Churs/Alpine

The Company That Offers You
High Quality Plant Food
At Competitive Prices

Talk To Us About Seed Banded Plant Food And Foliar Feeding
Place Phosphorus Where It Does Most Good (Seed Banded)

6-24-6 9-18-9 3-18-18 5-15-15
Check Early Order & Quantity Price

We Have In Stock:

- Old Castle Barn Grip
- Soft White-Feed Grade Lime
- Yardright Lawn & Garden Lime

Our Prices

Dealer Inquiries Welcome

Zimmerman Lime & Fertilizer, Inc.

235 W Burkholder Dr
Litz PA 17543
717/733-7674

Dealer of Raven Liquid Storage Tanks

ALUMINUM GRAIN BODIES & ALUMINUM REPAIRS by

These ultra-light bodies are designed for strength through engineering, not strength with bulk. For example, a 16' grain body with tailgate and 48" sides weighs only 1490 lbs. complete. We'll build you any length or any side height up to 60".

Also available:

- Double swinging hay hauling tailgate
- Diamond flooring
- Barn door type tailgate
- Pull out panel tailgates
- Slide out cattle chutes
- Any size grain chute

HEWEY WELDING

1045 Wampler Rd., Lebanon, PA 17042 (717)867-5222