

REH & Liquidations, Inc.

Complete Liquidation for PAUGH CONTRACTORS

1000 State Road, Bensalem, PA 19020

November 6, 2003 @ 9 am

November 2/5 from 8 AM to 4 PM

Event with Guaranteed Funds

TOLL FREE (866) 577-7347

Trucks and Containers; Trailer Jacks; Over 15 Vises; Approx. 10 Welder Generators; Air
Conditioners; Wave Runners; Pedestal Fans; Drill Presses; Grease; Fuel Tanks; Tool Boxes full
of Tools; Lift; Anvils; Hammer Bits; Cable; Reciprocating Saw; Railroad Jacks; Discharge Hose;
New and Used Gas Pumps; New and Used Drill Bits; Valves; Pipe Nipples; Bar Grating;
Scaffolding; Cement Mixers; Shelves Full of Copper Fittings, Pipe Nipples, and Other Misc.
Equipment; Aluminum Loading Docks; Approx. 10 Drop Buckets; Used Bricks

AERIAL LIFT

Pettibone Model OMNI 40- 40' Telescopic Aerial Lift, S/N 2410015

TRUCK MOUNTED CRANE

Alenco Model 8T-1 (13,000#) Truck Mounted Crane

TRUCK TRACTORS

1975 Mack Model R685ST Tandem Axle Truck Tractor, Vin# 56027,

1970 Mack Model R685LST Tandem Axle Truck Tractor, Vin #16308,

Mack Model U79SST Tandem Axle Truck Tractor, Vin #1010

LOWBOY TRAILERS

(2) Rogers Model THPG35DSF263 (35 Ton) T/A Lowboy, S/N 11308,

Rogers Model 40 Ton T/A Drop Side Lowboy Trailer

(4) Aluminum Storage Trailers.

DUMP TRAILER

Fruehauf 30' Tandem Axle Demolition Dump Trailer

FLATBED TRAILER

Trailmobile 40' Tandem Axle Flatbed Trailer

DROPDECK TRAILER

40' Tandem Axle Dropdeck Trailer

ROLL-OFF CONTAINERS

(3) 20 Yard Steel Containers, (2) 30 Yard Steel Containers

MISCELLANEOUS TRUCKS

1987 Autocar Model Tandem Axle Roll-Off Container Truck,

Ford Model F-700 Single Axle Rollback Truck, Vin #F70FVBC6337,

Chevrolet Model C60 Single Axle Dump Truck,

Chevrolet Model Kurbmaster Step Van,

Ford Model 8000 Tandem Axle Lube Truck

PICKUP TRUCKS

1993 Ford Model F-350XL Pickup Truck,

1993 Ford Model F-350 Pickup Truck,

1992 Ford Model F-150 Pickup Truck,

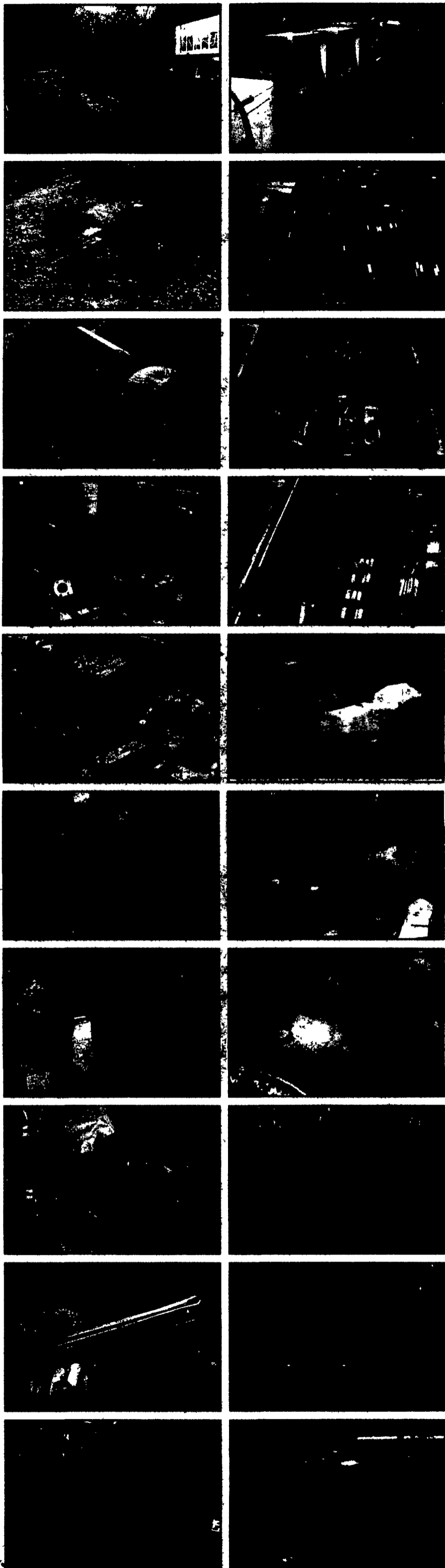
IHC Model 1100 4x4 Crew Cab Pickup Truck,

BOATS

MFG 16' Fiberglass Boat with a 40 HP Evinrude Motor and Homemade Trailer,

16' Fiberglass Boat with a 30 HP Johnson Motor

1000 State Road for 3/4 mile. Dead ends into State Road. Make right onto State



REH AUCTIONS AND LIQUIDATIONS

350 EAST BROADWAY

SALEM NJ, 08079

OFFICE PHONE: 856 935 9225

OFFICE FAX: 856 935 9226

PA# AU-001920-0

