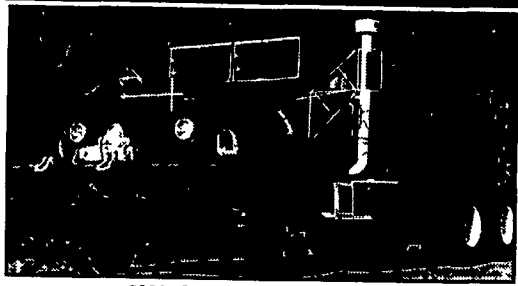


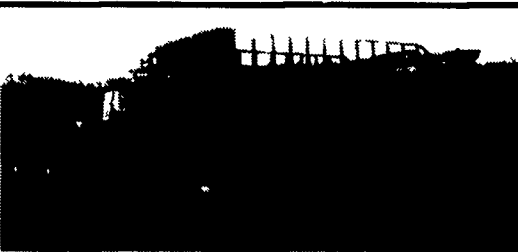
1985 Ford Fertilizer Truck
3208 cat, 10 spd. good condition with Tyler 16 ton tender box. 14' Side discharge auger all hydraulic. Good condition.

Call 1-888-845-1814

Lanc. Co.



6X6 CAB AND CHASSIS
New Cummins Diesel, Allison Automatic, High/Low Range, Double Frame, Hydraulic Front Winch, Long Wheel-Base, 20 Foot Useable Frame, Fully Reconditioned, \$22,500
www.militaryconvoy.com
(814) 834-1018



Mack w/Rotobek Loader
(will separate), Long Wheelbase, Dbl. Frame, 6 Spd.
Both Truck & Loader Run Great!
\$9,500
610/888-8848

USED TRUCKS



2000 DODGE 3500 LARAMIE SLT 4x4 Quad Cab,
Cummins Turbo Diesel, AT, A/C, Most Options, 93K Miles, Blue
\$23,500



1996 DODGE 3500 CLUB CAB SLT DUALLY
Cummins Turbo Diesel, 5-Spd., 2x4, A/C, Most Options, 8ft. Bed, 97K Miles, Driftwood
\$13,900

2000 FORD F250 CREW CAB 4X4, XLT, AT, Power Stroke Diesel, A/C, Most Options, Leather, 108K Miles, Black **\$22,900**

1999 DODGE RAM 2500 QUAD CAB SPORT, Short Bed, 4x4, Cummins Turbo Diesel, AT, A/C, Most Options, 94K Miles, Dk. Green **\$18,900**

1998 DODGE RAM 2500 4x4, Club Cab, 12 Valve Diesel, AT, A/C, C, 93K Miles, Red **\$17,900**

1997 DODGE RAM 2500 CLUB CAB, 4x4, V-10 Laramie SLT, Leather, AT, A/C, Most Options, Black, 108K Miles **\$12,900**

1995 CHEV 3500 8 FT. DUMP, 350 V8, 2WD, 5-Speed, PS, PB, AM/FM, 96K Miles, Red . . . **\$8,900**

1988 FORD F350 w/8 1/2 ft. Mason Dump body, 460 V8, 5-Spd, PS, PB, A/C, Red, 74K Miles . . . **\$10,900**

USED VANS

1997 Ford E350 Maxi Van, 15-pass., 5.4 V8, AT, Dual A/C, PB, PS, PL, AM/FM/Cass/CD, T.C., 42K miles, Black **\$11,500**

1997 CHRYSLER TOWN & COUNTRY MINI-VAN, 3.8 6-Cyl., 4x4, AT, Dual A/C, Most Options, 130K Miles, Green **\$7,550**

1998 CHRYSLER TOWN & COUNTRY MINI VAN, 3.8 6 cyl., AT, Dual A/C, Most Options, 74K Miles, Black **\$8,500**

SCHAEFFERTOWN AUTO & TRUCK SALES

RT. 501, 1-1/2 miles South of Schaefferstown
717-949-2812



5x8 Convertible Trailer, 2000# GVWR, Rear Ramp Door, Removable Tarp Cover & Bows, Convenience of a Cargo & Utility Trailer in One Package

Only \$1,195



All New Worthington Aluminum Dump Trailers Complete with Removable Sides, Ramps, Stake pockets & tie rail, 2990# to 5000# GVWR 7x10 or 7x12 bed size

Price Starts at \$2,995

KEYSTONE TRAILERS Inc.

• SALES • PARTS • SERVICE • HITCHES
1657 Rohrerstown Rd. • Lancaster, PA 17601
Phone 717-581-9020 • Fax 717-581-9055
www.keystonetrailers.com
Leasing & Financing Available
Mon.-Wed.-Fri. 8:00 a.m. to 6:00 p.m.
Tues.-Thurs. 8:00 a.m. to 5:00 p.m.
Sat. 8:00 a.m.-12:00 noon

90 DAYS SAME AS CASH AVAILABLE

Motorcycle - ATV - Snowmobile
Utility - Landscape - Cargo
Car Haulers - Race Trailers
Hydraulic Dumps - Concession
Construction - Equipment Haulers
1500# to 12 Ton Capacity
8' to 48' Length
Replacement Parts - Accessories
Lighting - Wiring Hitches & Towing
Accessories Brake Control - Ramps -
Tie Downs - Tool Boxes - Motorcycle
Carriers - Cargo Carriers - Wheels &
Tires - Bicycle Racks - Load Control
Straps & Equipment
On Site Tag, Title & Registration



USED STOCK TRAILERS FOR SALE



2-Horse \$575

USED 5'x8' Flatbed Trailer Only \$675



2-Horse w/Dressing Room \$1,950

New Corn Pro Trailers In Stock
Also Nice Selection of Pequea Trailers In Stock



Rt. 22 West, Fredericksburg, PA
717-865-7575



YARNALLS Equipment Co.

4171 Horseshoe Pike (Rt. 322), Honey Brook, PA 19344

Call Today Toll Free: 866-228-0408
www.yarnalls.com

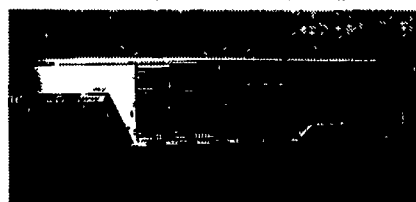
Over 100 Trailers In Stock



EXISS In Stock • EXISS All Aluminum • EXISS 7 Year Warranty • EXISS In Stock •



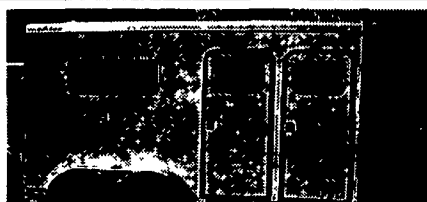
Continental Cargo Aluminum Landscape Trailers 12-14 Ft SA and 16 Ft TA
In Stock from \$1,650



7' Wide, 7' High Inside, 2 Center Gates, Insulated Front 24 Ft. Was \$11,575
Now \$10,270



5 Big Tex High Side Trailers in Stock - Reduced
10 Ft \$1,273, 12 Ft \$1,363, 14Ft TA \$2,205



7'6" High, Straight Load, 2 Escape Doors, Was \$12,175
Now \$11,516



3 Horse Slant w/Dressing Room, Step Up, Was \$12,575
Sport \$11,950



Straight Load, 7'6" Inside Height, Dressing Room, 2 Horse, Was \$14,997
Now \$14,323



Fully Insulated, 4 Ft. Dressing Room 4H Head To Head, Was \$26,000
Now \$24,625



Used 6 Horse Head To Head Rampload, Garage Kept.
\$6,500



Continental Cargo 2 Ft Dbl Rear Doors-Side Door - Reduced
WAS \$4,905 **Now \$4,625**



REESE



Financing - Trade Ins - Repairs
Hours: Mon., Tues., Wed., Fri. 8:30-5:00;
Thurs. 8:30-7:00; Sat. 9:00-1:00 P.M.
8 Miles Off Exit 298 PA Turnpike

