

350

TRUCKS / TRAILERS

Marlin's Farm Trucks, LLC

5 Miles South of Chambersburg on U.S. 11
just North of Marion, PA
(717) 597-5623
7 a.m. - 9 p.m.
Ask for Joel or Duane
No Sunday Calls

**1991 Mack RD600
Glider**

Cab and Chassis, Mack 283 Engine,
5 Spd Trans., PTO, Hyd Pump,
Mack 4.17 Rears with
Camelback Susp., Double Frame,
252" WB., 174" CT,
Ready for your Bed or Tank!
\$12,900



**1994 Peterbilt 375
Day Cab**

365hp Cat, 10Spd, 4.33 ratio,
Jake, PTO, only 14,500 lb.



**2000 USTS Dump
Trailer**

38'x102' Aluminum dump trailer,
frame type triaxle, 84" sides, high
capacity, 75 cu. yd
\$20,500



East Dump Trailer
Aluminum, Frame Type,
28' Box, 32' Frame
Good Tires and Brakes
\$7,500



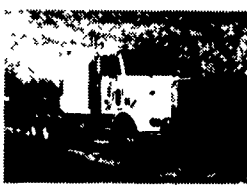
1994 International 9400

425hp Cat, 10spd 3.73 ratio, Jake
air suspension, new USA silage
dump body, good tires
\$29,900



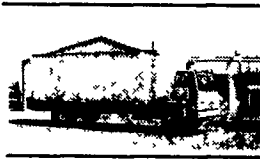
**1993 Peterbilt 378
Set Back Axle**

N14-430 Cummins, Jake, 9 spd,
3.58 ratio 232" WB, 160" CT,
Removable Sleeper
\$12,500



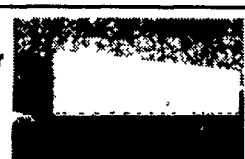
**1999 Freightliner
FC 70**

215 HP, Cummins, 6 Speed,
33,000 GVW



1990 Utility Reefer Trailer

48'x102", Thermo King II unit
\$4,500 OBO



**1996 International
4700**

DT466 Engine, 25,500 GVW
\$11,800 OBO



**1990 Clark Feed
Trailer**

10 Compartment, Blower Trailer
\$2,500



Cumberland Valley Dodge



1 DAY SALE
at Your Central Pennsylvania Dodge

NOVEMBER 29 ONLY

**2003
DODGE
DURANGO SLT**

STK #D4495
MSRP \$34,520



your price
\$25,519*

SAVE OVER
\$9,000

**2004
DODGE
RAM 1500
4X4**

STK #D4774
MSRP \$27,785



your price
\$21,627*

SAVE OVER
\$6,100

**2004
DODGE
RAM 2500
QUAD CAB 4X4**

STK #D4721
MSRP \$34,930



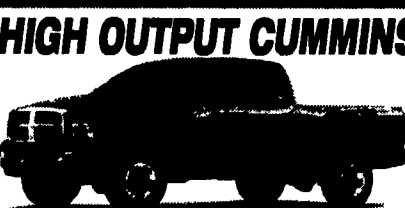
your price
\$27,770*

SAVE OVER
\$7,100

2004 HIGH OUTPUT CUMMINS DIESEL

**DODGE
RAM 2500
QUAD CAB 4x4**

STK #D4759
MSRP \$38,560



your price
\$30,990*

SAVE OVER
\$7,500

OVER 50 DODGE RAMS AVAILABLE!!

*ALL PRICES INCLUDE MANUFACTURERS REBATES AND FARM BUREAU REBATE TO QUALIFIED MEMBERS. TAX AND TAGS EXTRA. NOT RESPONSIBLE FOR TYPOGRAPHICAL ERRORS. PICTURES FOR ILLUSTRATION PURPOSES ONLY. OFFER EXPIRES 11/30/03



6720 CARLISLE PIKE,
MECHANICSBURG, PA
www.CVMDODGE.com

888 494-8708



1986 GMC Brigadier

Tandem axle 25' van with rail lift gate,
reman. 3208 Cat engine (210 hp), 6 sp.
trans., P/S, full air brakes, 10,860 lb. frt.
axle, 34,000 lb. rear axle, 44,860 lb
GVW, Hendrickson suspension, excel-
lent 11R22.5 tires on Budd wheels,
183,611 original miles. This is a super
sharp truck.

\$6,500

Chassis and cab only - **\$5,900**



**1996 Ford LN8000 22' Chassis
& Cab**, 8.3 Cummins engine (210 hp),
6 sp. trans., P/S, A/C, full air brakes,
32,700 lb. GVW, hi tread 11R22.5 tires
on Budd wheels. Excellent running truck
Only \$6,900
(The Reefer Body is Sold)

CAMDEN TRUCK

215★925★0322
856★456★4030

LESHER



SALES & SERVICE

2700 Cumberland St.
Lebanon, Pa.
(Route 422 West)

717-273-4535

website:www.leshermacksales.com



(1) 2004 CX613 Day Cab,
E7-427, 10-Spd., Air
Susp., 169 W.B.



**(2) 2001 Mack CH613
Day Cabs**, E-7-350,
10-Spd., 169" W.B., Air-
ride, 160K & 180K Miles

(1) 2004 CV713 Granite,
AI-427-Aset, RTP
14908LL, 265" W.B.

**Technician
Needed**
Call for Details

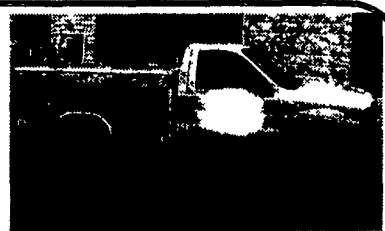
**All Farmers
Should Have One
w/Hook Lift**
(accepts multiple bodies)
**Call
For More Details**



Many other Trucks in Stock - Call for Details



1990 UD 3000, Turbo Diesel Nissan 190 HP, 6 Spd, Spring
Suspension, 22.5 Tires, Budd Wheels, Single Axle, White,
2800 Gallons, 33,000 GVWR, Air Brakes, Progress 2
Compartment Tank, Double Pumper, Blackmer PTO Driven,
Manifold System, 2 Electric Rewind Hose Reels, Stk
#120131, \$12,900



2000 FORD F250 XL, 5.4 V-8 Triton Auto, White, 4x4 w/8'
Reading Service Body; Tow Package, Air Condition, New
Tires, Excellent Condition, Mileage: 88,000, Stk #170205,
\$13,900



1990 FORD L8000, Ford 240 HP, 9 Spd, Hendrickson
Suspension, Tandem Axle, White, Rear Dump, 14,000 lb
Front Axle, 40,000 lb Rear Axles, Stk #130160, \$19,900



1999 INTERNATIONAL 4700, 444E International 175 HP,
Allison Automatic, Spring Suspension, 176" WB, 22.5LP
Tires, All Steel Wheels, White, FEC 13' Tire Body, Ingersoll-
Rand 2345 Hydraulic Driven Air Compressor, Air Hose Reel,
FEC 4016 4000lb Knuckleboom Crane, Hydraulic Tail Gate,
Stk #180501, \$35,900

Dump Bodies For Sale

2001 Beau-Roc 20' steel dump body, 42" sides with coal slide, heated	\$5,000
Gallon 16' aluminum dump body 48" sides	\$3,500
R&S 16' aluminum dump body 46" sides	\$3,500
R&S 15'6" steel dump, 52" sides, tarp	\$2,000
14' steel dump 54" sides coal slides	\$3,000

Van Bodies For Sale

Morgan 18' Van body 88" wide, 85" high	\$1,500
Morgan 20' van body with Liftgate 93" wide, 85" high	\$2,000
Morgan 22' van body 88" wide, 98" high	\$1,500
Morgan 22' van body, 2 side doors, 88" wide, 85" high	\$500

Flatbeds For Sale

18' Flatbed with headboard, stake pockets, steel floor, 100" wide, 2 tool boxes	\$2,000
19' flat with headboard, plywood floor	\$500



Curry Supply Co. 1-800-345-2829
Curryville, PA 814-793-2829